

Mint Museum Uptown in Charlotte, NC, Features Works From World Fairs

The Mint Museum Uptown in Charlotte, NC, is presenting *Inventing the Modern World: Decorative Arts at the World's Fairs, 1851-1939*, presenting outstanding examples of glass, furniture, jewelry, ceramics, precious metalwork, and textiles displayed at the world's fairs between London's Great Exhibition of the Works of Industry of All Nations in London in 1851 and New York's World's Fair in 1939, on view through January 19, 2014.

"The Mint is pleased to offer Charlotte audiences and the region a blockbuster exhibition celebrating art that is beautiful, inspiring, and historically significant," said Dr. Kathleen V. Jameson, President & CEO of the Mint. "This nationally touring exhibition will be accompanied by one of the most exciting slates of in-depth and innovative programming we've ever hosted."

Inventing the Modern World comprises approximately 200 objects shown during the major world's fairs from 1851 to 1939 – a journey through the major cultural capitals of the world. Large and small in scale, these seminal objects are culled from private and public collections, primarily in America and Europe. Many of these objects have never before left their respective institutions or countries. Among the many lenders are The Metropolitan Museum of Art, the Victoria and Albert Museum, London, Designmuseum Danmark, and the Musée des Arts Décoratifs in Paris. The exhibition was co-organized by the Carnegie Museum of Art and The Nelson-Atkins Museum of Art, and traveled to the New Orleans Museum of Art before making its final stop at the Mint.



Zaire Centerpiece Bowl, 1930. Delheid Frères, Belgium.

"They were a place for people to see the latest works of art and design created in other countries as well as their own."

Some fairs were broad in scope, displaying decorative arts alongside paintings, sculpture, industrial design and agricultural products; others concentrated on exhibiting decorative arts alone. Both types of expositions functioned as showcases and marketplaces for design. Above all, they democratized design, exposing countless visitors and others to the latest artistic and technological achievements of their time.

Exhibition highlights include an extraordinary Fabergé tiara fashioned from thousands of tiny rose-cut diamonds set on knife-edge mounts, which gives the tiara the appearance of woven lace. Acclaimed firms such as Tiffany & Co., Lalique, Cartier, and Boucheron are also represented at the exhibition through superlative examples of their works.

The exhibition is the grandest ever hosted by the Mint; it is the largest exhibition since the opening of Mint Museum Uptown, and the first to take up both the third and fourth special exhibition levels. It is also the Mint's first ticketed exhibition in over a decade. Exhibition admission is \$10 for adult visitors on top of regular museum admission. Exhibition admission is free for Mint members and children under 18 when they accompany a paying adult.

Special programming during the exhibition's run include a lecture on "Tiffany at the World's Fairs" by the archivist at Tiffany & Co., New York, Annamarie V. Sandeck, scheduled for Nov. 10, and a panel discussion by contemporary experts on concepts that may change our lives in the future, "What's Next? Inventions that will change Contemporary Living," scheduled for Dec. 4 and sponsored by UTC Aerospace Systems. A full listing is available at (www.mintmuseum.org/happenings).

Major support for this exhibition was provided by Wells Fargo, the Windgate Charitable Foundation, and the National Endowment for the Arts. The exhibition is brought to Charlotte through generous support from Duke Energy, Novant Health, Rodgers Builders, and the Southern Christmas Show. In-kind support was generously provided by Adams Outdoor Advertising.

A fully-illustrated catalogue is available in the Mint Museum Shops.

For further information check our NC Institutional Gallery listings, call the Museum at 704/337-2000 or visit (www.mintmuseum.org).



Coupe de Rivoli, circa 1867. Sevres Porcelain Manufactory, France.

"We wanted to bring this exhibition to Charlotte because it truly does present the best examples of decorative arts from the second half of the 19th century through the first half of the 20th," says Brian Gallagher, Curator of Decorative Arts at the Mint. "The exhibition also complements two of our museum's greatest strengths: historical decorative arts and contemporary craft and design, and so we knew that our members and supporters would especially enjoy it."

World's fairs were important places for debuting advancements in modern living. "In the decades before television commercials, much less the Internet, these fairs were one of the primary vehicles through which people could learn about other cultures and other countries," says Gallagher.

Central Piedmont Community College in Charlotte, NC, Features Works by Sharon Dowell and Ahmad Sabha

Central Piedmont Community College in Charlotte, NC, will present an exhibit of paintings by Sharon Dowell and ceramic works by Ahmad Sabha, on view in the CPCC Ross Gallery, from Oct. 3 through Nov. 14, 2013. A reception will be held on Oct. 10, from 5-7pm.

Sabha uses industrial forms like factories, pipes and water towers as inspiration for his ceramic creations, which are replete with contrasts in shape, texture and color. In contrast, Dowell's paintings

capture the bright energy of place through mapping, layering and architectural forms that combine to create representations forged with emotional experience. Each artist's appreciation for the overlooked reliquaries of industry and their medium will be evident to exhibition attendees. Dowell's paintings will serve as a dramatic backdrop to Sabha's ceramic pieces, which will be displayed on pedestals or on their own forged steel stands throughout

continued above on next column to the right

SHAIN
GALLERY

William Jameson, Solo Show at Shain

October 18 - November 3, 2013

Opening Reception
Friday
October 18, 2013
6 - 8:30pm



October Light Series oil on canvas 30 x 40 inches



December Morning oil on canvas 36 x 36 inches

Shain Gallery is pleased to present

William Jameson, Solo Show,

an exhibit featuring this prolific artist and teacher who says of his work:

"The more I paint, the more I must paint. The need to...is never diminished by having completed a painting, but rather there's an immediate need to begin another."

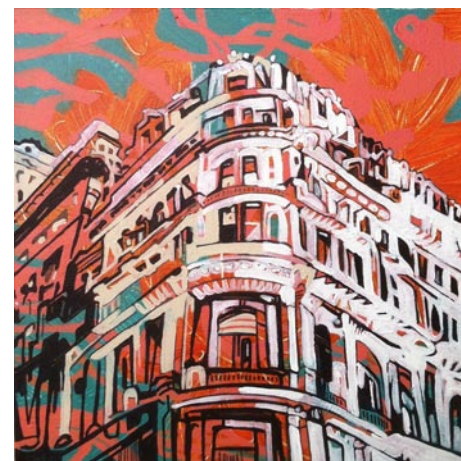
SHAINGALLERY.COM

2823 Selwyn Avenue
Charlotte, NC 28209
704.334.7744

Ross Gallery.

Sharon Dowell will give an Artist Lecture on Oct. 24 at noon in Ross Gallery.

Central Piedmont Community College is one of the largest colleges in the Carolinas, offering nearly 300 degree, diploma and certification programs, customized corporate training, market-focused continuing education, and special interest classes. CPCC is academically, financially and geographically accessible to all citizens of Mecklenburg County. In 2002, the National Alliance of Business named CPCC the Community College of the Year for its response to the workforce and technology needs of local employers and job seekers through innovative educational and training strategies. Established in 1963, CPCC is celebrating 50 years of service to Mecklenburg County residents, business and industry.



Work by Sharon Dowell

For further information check our NC Institutional Gallery listings, contact Grace Cote at 704/330-6211 or e-mail to (grace.cote@cpcc.edu).

Bechtler Museum of Modern Art in Charlotte Offers Look at Its Collection

Bechtler Museum of Modern Art in Charlotte, NC, is presenting *Modernism in Changing Times: Works from 1968 today*, on view through Jan. 24, 2014.

The exhibition presents 101 works from the Bechtler's permanent collection that were created in 1968 and surrounding years. On view for the first time in the museum are works by Hockney, Picasso, Calder, Chagall, Chadwick and other artists.

"We are once again dipping into the collection from a purely chronological perspective and have selected a point in time – 1968 – that represents a period of exceptionally successful collecting on the part of the Bechtler family," said Bechtler President and CEO John Boyer.

With this exhibition, the Bechtler is able to illustrate the breadth of the contemporary art world in 1968 from Pop art with Warhol and Lichtenstein to Realism, figural art and landscape with Hockney, Chagall and Gladwell. The 101 works in sculpture, painting, prints, artist books and

textiles represent some of the leading art movements of the 1960s including Post-Painterly Abstraction, Op art, kinetic art and Concrete art.

Figurative works are a predominant theme. More than 50 pieces in the show illustrate references to the real world and particularly to the human figure. Of special interest in the exhibition are artworks related to literature. Woodcut prints by Max Gubler are based on the Ernest Hemingway novel *The Old Man and the Sea* and linocuts by Hansjürg Brunner are based on the 19th century novella *The Black Spider*.

In conjunction with the exhibition, the Bechtler will present a series of related programs, call the Museum for further info.

The Bechtler Museum of Modern Art is dedicated to the exhibition of mid-20th-century modern art. It is named after the family of Andreas Bechtler who assembled and inherited a collection created

continued on Page 36