

NC Commercial Galleries

continued from Page 43

world, home accessories and changing fine art exhibitions. Hours: Mon.-Sat., 11am-6pm & Sun. noon-5pm. Contact: 828/250-0500 or at (www.homeredefined.com).

Kress Emporium, 19 Patton Ave., Patton & Lexington Aves., downtown Asheville. **Ongoing** - Featuring works by over 100 artists and craftsmen. Hours: Mon.-Sat., 11am-6pm & Sun., noon-6pm. Contact: 828/281-2252 or at (www.thekressemporium.com).

Montford Arts Center, 235 Montford Avenue, Asheville. **Ongoing** - Featuring works in a variety of media by over twenty-five area artists. Watch artists at work. Hours: Tue.-Fri., 11:30am-6pm & Sat., 11:30am-5pm. Contact: 828/777-1014.

Mountain Made, Grove Arcade Public Market, 1 Page Ave., Suite 123, Asheville. **Ongoing** - Featuring the work of over 80 artisans including beautiful pottery, hand painted silks, jewelry, furniture, original oils-pastels-watercolors, stained glass, textile art, blown and fused glass, iron work, gourds, hand made books, and more. Hours: Mon.-Sat., 10am-6pm & Sun., noon-5pm. Contact: 828/350-0307 or at (www.mtnmade.com).

Mudhunter Pottery, 66 Broadway St., Asheville. **Ongoing** - Featuring a rustic gallery shop showcasing functional and sculptural work from over 20 local potters. Our artists' diverse styles and affordable prices set them apart. Hours: Tue.-Thur., 11am-5:30pm & Fri. & Sat., 11am-6pm. Contact: 828/225-5869.

New Morning Gallery, 7 Boston Way, Historic Biltmore Village, Asheville. **Ongoing** - Featuring fine art and crafts by some of America's finest artists. Hours: Mon.-Sat., 10am-7pm. Contact: 828/274-2831 or at (www.newmorninggallerync.com).

Overström Studio, 35 Wall St., Asheville. **Ongoing** - This architecturally significant gallery exclusively represents work by internationally-recognized designer Michael Overström, who with his wife Susan, present their original, handformed jewelry designs that embrace the designer's Scandinavian heritage and define Asheville's elegant style. Hours: Tue.-Sat., 10am-8pm. Contact: 828/258-1761 or at (www.overstrom.com).

Pura Vida, 39-B Biltmore Ave., Asheville. **Ongoing** - Featuring a space for the senses, offering the finest in artwork appealing to all five senses. Hours: daily noon-10pm. Contact: 828/271-6997 or at (www.pura-vida-asheville.com).

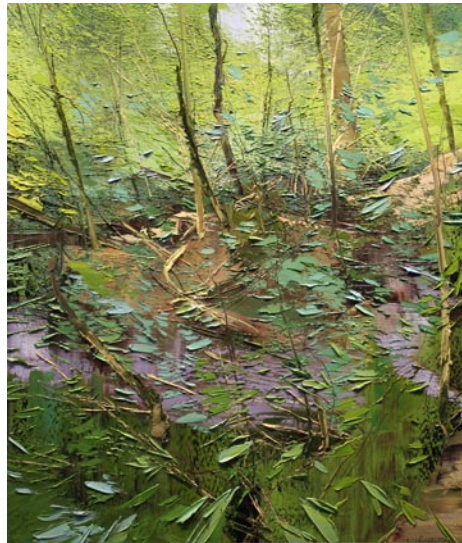
16 Patton Fine Art Gallery, 16 Patton Avenue, Asheville. **Ongoing** - Featuring works by William McCullough, Deborah Squier, John MacKah, Greg Osterhaus, Jerry La Point, Richard Over-smith, Scott Lowery, Dawn Rentz, Laura Young, Margaret Dyer, Suzy Schultz and Stuart Roper. Studio glass by Herman Leonhardt. Hours: Mon.-Sat., 10am-6pm. Contact: 828/236-2889 or at (www.16patton.com).

Studio B Custom Framing & Fine Art, 171 Weaverville Hwy., 2.1 miles north of our old location, Asheville. **Ongoing** - Browse our new gallery featuring works by national and international artists, including paintings, prints & posters, jewelry, ceramics, wood and textiles. Also offering custom framing. Hours: Tue.-Fri., 10am-5:30pm & Sat., 10am-3pm. Contact: 828/225-5200 or at (www.galleryatstudiob.com).

Sutherland Handweaving Studio, 122 Riverside Dr., inside Cotton Mill Studios in River Arts District, Asheville. **Ongoing** - This handweaving studio, gallery and learning center features fine, one-of-a-kind and limited edition handwoven fashion accessories and household textiles, including scarves, shawls, garments, handbags, towels, table linens, blankets and wall art. Sutherland also offers a series of classes and workshops for beginning weavers, weavers needing a refresher course or experienced weavers. A monthly Sutherland Weavers' Study Group brings area weavers together to discuss design challenges, share successes and work through problems in a casual, small group format. Hours: Tue.-Sat., from 10am-4pm. Contact: Barb Butler, 828/513-1814, or Karen Donde, 854/261-4324, or at (www.sutherlandhandweaving.com).

310 ARTGallery, 191 Lyman St, #310, Asheville. **Ongoing** - Featuring original, contemporary fine art by 21 regional artists. Hours: Fri.-Sun., 9:30am-3:30pm and most weekdays or by appt. Contact: 828-776-2716 or at (<http://www.310art.com/main/>).

The Bender Gallery, 57 Haywood St., Asheville. **Ongoing** - The region's largest and most diverse studio glass gallery on two sun-filled levels features artists from around the country as well as around the world. Hours: Mon.-Sat., 10:30am-6pm & Sun., noon-5pm. Contact: 828/505-8341 or at (www.thebender-gallery.com).



Work by Lynn Boggess

The Haen Gallery, 52 Biltmore Ave., a few steps south of the movie theatre, Asheville. **Ongoing** - Committed to providing access to stunning and unique artwork for discerning collectors and our community in general. Our offerings will reflect the character and sensibilities of this wonderful region. Including works by Lynn Boggess, GC Myers, Jerry Bowman, Alvena McCormick, Volkmar Wentzel, and MM Pipkin. Hours: Mon.-Fri., 10am-6pm; Sat., 11am-6pm; and Sun., noon-5pm. Contact: 828/254-8577 or at (www.thehaengallery.com).

The Satellite Gallery, 55 Broadway, Asheville. **Ongoing** - Featuring works by the next wave of innovative and creative artists that are rising from the underground of contemporary street and pop culture. Hours: Tue.-Sat., 11am-6pm & Sun., noon-6pm. Contact: 828/505-2225 or at (<http://www.thesatellitegallery.com/>).

Vadim Bora Gallery, 30 1/2 Battery Park Ave., Asheville. **Ongoing** - Showcasing the works of international master sculptor and painter Vadim Bora. The gallery features classical and contemporary sculpture, oil paintings, and works on paper, highlighting Bora's figurative, portrait, landscape, and conceptual art. In addition to showcasing Bora's work, the gallery will introduce original talent to the region, including the works of artists from Bora's native Caucasus Mountains of southern Russia. Hours: Tue.-Fri., 1-5pm; Sat., noon-5pm & by appt. Contact: 828/254-7959 or at (www.vadimbora-studio.com).

Woolworth Walk, 25 Haywood Street, Asheville. **Ongoing** - Featuring artwork and crafts by over 170 artists. Hours: Mon.-Sat., 11am-6pm, closed Tue. (until Mar.), & Sun. 11am-5pm. Contact: 828/254-9234 or at (www.woolworthwalk.com).

ALTERNATE ART SPACES - Asheville
Mountain Area Health Education Center, 121 Hendersonville Road, turn off Hendersonville Road at the entrance to Doubletree Hotel and take an immediate left, the driveway (follow the signs) wraps up behind the hotel, Asheville. **Through Jan. 13** - Featuring works by Brit J. Oie (mixed media paintings) and Karen Reese Tunnell (mixed media fiber). The program is managed by art consultant Wendy H. Outland of WHO KNOWS ART. Hours: Mon.-Fri., 8am-5pm, ask at front desk for exhibit handouts. Contacts: 828.686.5219 or at (www.whoknowsart.biz).

The Captain's Bookshelf, 31 Page Ave., Asheville. **Ongoing** - Featuring original art, prints and poetry broadsides are displayed along with a quality selection of secondhand and rare books. Hours: Tue.-Sat., 10am-6pm. Contact: 828/253-6631 or at (<http://www.captainsbookshelf.com/>).

Atlantic Beach

Vision Gallery, 407 Atlantic Beach Causeway, Atlantic Beach. **Ongoing** - Featuring original paintings and three-dimensional work from regional and national artists, and one and two-person shows in summer months. Hours: 10:30am-5pm, closed Wed, Sun. Contact: 252/247-5550 or at (www.twogalleries.net).

Bakersville

Crimson Laurel Gallery, Blevins Building, 23 Crimson Laurel Way, Bakersville. **Ongoing** -

ing - Featuring the largest selection of studio ceramics in Western North Carolina, including some of the finest art and craft to be found anywhere in Appalachia. We also represent select artists from around the country and their unique artwork. Representing more than 90 artists. Hours: Tue.-Sat., 10am-6pm and open daily Oct. - Dec. Contact: 828/688-3599 or at (www.crimsonlaurelgallery.com).



Work by Cindy Taplin

Michal Kline Pottery, 4062 Snow Creek Road, Bakersville. **Ongoing** - Featuring pottery by Michael Kline and jewelry by Stacey Lane. Contact: call 828/675-4097 or visit (<http://michaelklinepottery.blogspot.com/>).

Banner Elk Area

Alta Vista Gallery, 2839 Broadstone Road, (between Banner Elk and Boone) Valle Crucis. **Ongoing** - Featuring fine art gallery in historic farmhouse, located near the Original Mast General Store. In its 20th year and representing over 100 artists, the gallery specializes in oils and watercolors depicting mountain landscapes. Artists include: B. Jean Baird, Alan McCarter, Louise Pinto, Jean Pollock, Ray Byram, Joan Sporn, Elizabeth Ellison, Dotti Shelton. Also shown are original lithographs and original serigraphs from internationally-acclaimed artists such as ALVAR, Boulanger, and folk artist Will Moses, great-grandson of "Grandma Moses." Also: kaleidoscopes, stained-glass, pottery, jewelry, sculpture, and custom framing. Designer Bed-and-Breakfast rooms on-site. Open all year; hours vary according to season. Summer/Fall Hours: 11 am-5pm daily, except for Sun., which are by appt. Contact: 828/963-5247 or at (www.altavistagallery.com).

Antonaccio Fine Art, 10360 NC Hwy. 105 South, Banner Elk. **Ongoing** - Featuring romantic oils of mountain landscapes & florals by Egidio Antonaccio, still lifes by Betty Mitchell and Victorian sculpture by Maggie Moody. Hours: Mon.-Sat., 11am-6pm and Sun., noon-6pm. Contact: 828/963-5611.

Art Cellar Gallery, 920 Shawneehaw Ave., Hwy 184, Banner Elk. Through Sept. 10 - "Photographic Views," featuring works by Dot Griffith and Kim Penney. **Ongoing** - Three floors of exhibition space featuring painting and sculpture from regionally and nationally known artists. Featured artists include: William Dunlap, Herb Jackson, Gregory Smith, Norma Murphy, Tim Turner, Deborah Jacobs Purves, Bill Brown, Scott Boyle, Margaret Salisbury, and others. Hours: Mon.-Sat., 10am-5pm. Contact: 828/898-5175 or at (www.artcellaronline.com).

Carlton Gallery, 10360 Hwy 105 South, Grandfather Community, Banner Elk. **Ongoing** - Featuring the work of over 200 local, regional & national artists presenting fine art, woven works, sculpture, jewelry, pottery and contemporary crafts. Hours: Mon.-Sat., 10am-5pm & Sun., 11am-5pm. Contact: 828/963-4288 or at (www.carltonartgallery.com).

Sally Nooney, Artists Studio Gallery, located midway between Banner Elk & Valle Crucis on Hwy 194 So. **Ongoing** - Featuring the rich, vibrant works of Sally Nooney in oil, acrylic, and watercolor. Hours: Tue.-Sat., 10am-5pm. Contact: 828/963-7347 or at (www.sallynooney.com).

Beaufort

Landscapes Gallery Fine Arts and Crafts, 410 Front Street, Beaufort. **Ongoing** - The Gallery promotes American traditions in pottery, jewelry and glasswork with an emphasis on North Carolina artists. Over 200 artists are represented in a full range of work from the traditional to the contemporary in pottery, glass, jewelry, metal, wood and other media. Hours: Mon.-Sat., 10am-6pm & Sun., 10am-5pm. Contact: 252-728-6805 or at (<http://www.landscapesgallery.com/>).

Belmont

JS Pottery Antiques and Collectibles, 27 North Main Street, Belmont. **Ongoing** - Offering pieces ranging from face jugs, vases, pitchers and planters with hand-painted iris, dogwood, and magnolia designs to beautiful hand-carved North Carolina lighthouses. Hours: Mon.-Sat., 9am-6pm & Sun., noon-5pm. Contact: 704/829-0360 or at (www.jspottery.com).

Black Mountain/Montreat/Swannanoa

Acoustic Corner, 105 F Montreat Rd, Black Mountain. **Ongoing** - Acoustic instruments hand-made or manufactured by hand in small factories. Guitars, mandolins, bouzoukis, banjos, violins, lap dulcimers, and other instruments popular in Celtic, Old-Time, Bluegrass, and other folk genres. Plus all accessories. Hours: Mon.-Fri., 10am-7pm & Sat., 10-5pm. Contact: 828/669-5162.

Black Mountain Iron Works, 120 Broadway, Black Mountain. **Ongoing** - Featuring works handcrafted in iron & other metals by Tekla and Dan Howachyn. Hours: Mon.-Sat., 10am-5pm. Contact: 1/888/689-9021 or at (www.BlackMountainiron.com).

Black Mountain Quilts, 121 Cherry St., Black Mountain. **Ongoing** - Heirloom quality quilts, accessories, handbags, tabletop, and baby quilts. Hours: Mon.-Sat. 10-6pm & Sun. 12-5pm. Contact: 828/669-0730.

Black Mountain Studios Inc., 626 Lytle Cove Rd., just 3 miles from downtown Black Mountain, Swannanoa. **Ongoing** - A fine pottery craft and art gallery featuring many local as well as some nationally known artists. Owner and operated by award winning potters Austin and Maud Boleman. Hours: 11am-6pm seven days a week. Contact: 828/686-1011.

Cherry Street Gallery, 132 Cherry Street, Black Mountain. **Ongoing** - Featuring arts and crafts by regional artisans. Hours: Mon.-Sat., 10am-5pm & Sun., 1-5pm. Contact: 828/669-0450.

Garrou Pottery, 100 State St., Black Mountain. **Ongoing** - Featuring a wide variety of handmade pottery by father and son, John and Derrick Garrou, and the works of other area craftsmen. Hours: Mon.-Sat., 11am-5pm. Contact: 828/669-0222.

Seven Sisters Gallery, 117 Cherry Street, Black Mountain. **Ongoing** - Featuring a large selection of arts and crafts by local, regional and national artists. Hours: Mon.-Sat., 10am-6pm & Sun., noon-5. Contact: 828/669-5107 or at (www.sevensistersgallery.com).

Song of the Wood, 203 West State St., Black Mountain. **Ongoing** - Home of rare, one of a kind, handcrafted musical instruments and enchanting recordings. Come enjoy our intimate approach to the senses. Hours: Mon.-Sat., 10am-5pm. Contact: 828/669-7675.

Sourwood Gallery, 110 Broadway, Black Mountain. **Ongoing** - Featuring a co-op gallery of local artists offering original art for sale, including: paintings, pottery, jewelry, photography, stained glass and other fine art. Artists are: Kent A. Barnes, Katrina Bass, Judith Bush, Sarah Campbell, Charley, Ruth Connor, Denise Geiger, Jean Hope, Elizabeth Kirk, Ida O'Connell, Billy Ogle, Eileen Ross, Marilyn Sobanski, Jenean Stone, Susan Taylor, Summer G. Ventis, Ann Whisenant, and Katherine Youtz. Hours: Mon.-Sat., 10am-5pm. Contact: 828/669-4975.

Studio 103 Fine Art Gallery, 103 West St, Black Mountain. **Ongoing** - Owned and curated by photographer Rebecca D'Angelo, the gallery will feature monthly shows by local and national artists. It will also offer local art and crafts for sale in its retail section. Hours: Wed.-Sat., noon-6pm or by appt. Contact: call Rebecca D'Angelo at 828/357-8327 or at (www.studio103fineartgallery.com).

Ten Thousand Villages, 303 Lookout Rd., Montreat. **Ongoing** - Fair trade source for handmade items from more than 30 countries in Africa, Asia and Latin America. Hours: Mon.-Sat. 10am-5pm. Contact: 828/669-1406.

The Ginkgo Tree Photo Gallery & Frame Shop, 128 Broadway, Black Mountain. **Ongoing** - Gifts, cards, prints, photography and framing. Hours: Mon.-Fri., 10am-5pm & Sat., 10am-4pm. Contact: 828/669-7721.

The Old Depot Arts & Crafts Gallery, intersection of Sutton and Cherry Streets, Black Mountain. **Ongoing** - A non-profit arts/crafts gallery representing local artists. Proceeds support arts in the schools program. Pottery, folk art and more. Hours: Tue.-Sat., 10am-5pm & Sun., 1-5pm. Contact: 828/669-6583.

Visions of Creation Gallery, 114 Cherry State Street, Black Mountain. **Ongoing** - Featuring unique, contemporary fine gold jewelry of incomparable beauty and quality handcrafted by Robert Vengoechea. Hours: Tue.-Sat., noon-6pm & Sun., 1-5pm. Contact: 828/669-0065.

continued on Page 45