

# NC Commercial Galleries

continued from Page 61

ings, photography, sculpture, jewelry, ceramics, fabric, and objects found during the renovation of the building: horse shoes, bottles, papers, wagon parts, utensils, glass, and ceramics (c. 1910-1920). Hours: Tue.-Sat., 10am-6pm or by appt. Contact: 484/885-3037.

**Bottega Art & Wine Gallery**, 208 N. Front St., Wilmington. **Ongoing** - Featuring works by regional and international artists in a variety of media. Hours: Tue.-Wed., 1-10pm and Thur.-Sat., 1pm-midnight. Contact: 910/763-3737 or at ([www.bottegageallery.com](http://www.bottegageallery.com)).

**Checker Cab Gallery**, 130 N. Front Street, Suite 102, Wilmington. **Ongoing** - The gallery is a full-service gallery featuring abstract and representational artwork serving collectors of all levels. It is downtown Wilmington's most dynamic gallery featuring original artwork by regional emerging and established artists. Hours: Tue.-Thur., noon-7pm; Fri.-Sat., noon-9pm; & Sun., noon-7pm. Contact: 919/270-1711 or at ([www.checkercabproductions.com](http://www.checkercabproductions.com)).

**ERA 20th Century Furniture and Art Gallery**, 523 South 3rd St., Wilmington. **Ongoing** - Inviting emerging artists of all sorts, to fill the quiet space with cutting edge art that not only is pleasant to view, but also thought-provoking. Unique modern furnishings from the mid-20th century complement the contemporary art. Hours: Wed.-Sat., 11am-5pm or by appt. Contact: 910/612-0542.

**New Elements Gallery**, 216 North Front Street, Wilmington. **Ongoing** - Featuring works by regional and nationally recognized artists. We offer a wide variety of contemporary fine art and craft, including paintings, sculpture, ceramics, glass, fiber, jewelry and wood. Hours: Tue.-Sat., 11am-6pm or by appt. Contact: 910/343-8997 or at ([www.newelementsgallery.com](http://www.newelementsgallery.com)).

**SALT Studio & The Gallery at SALT Studio**, 805 N. 4th Street, inside the historic Modern Baking Building in the heart of the Brooklyn Arts District - enter through glass door under the building overhang, the gallery is at the end of the hallway Wilmington. **Ongoing** - The Gallery at SALT Studio is Wilmington NC's only fine art photography gallery. The gallery exhibits fine art photography by national, international, and local artists. The gallery strives to bring thought provoking, aesthetic, photo-based works of art to Wilmington. All of our exhibition openings are on the Fourth Friday Gallery Nights each month as administered by The Arts Council of Wilmington. SALT Studio is a photography studio that offers high caliber, personalized photographic services with a unique edge to Wilmington. Hours: Mon.-Fri., 10am-6pm and Sat., noon-5pm. Call prior to coming to make sure we are open and not on location shooting a job. Contact: 910/367-5720 or at (<http://Salt-StudioNC.com>).

**621N4th Gallery**, 621 North 4th Street, Wilmington. **Ongoing** - The gallery is an artist-run gallery, studio and office space located in the heart of downtown Wilmington's Brooklyn neighborhood. The gallery location provides established and emerging artists the opportunity to exhibit and sell their work in a professional manner. Hours: Mon.-Thur., 1-5pm & 4th Friday, 6-9pm or by appt. Contact: 910/763-2012 or at (<http://621n4th.com/index.php>).

**Spectrum Art & Jewelry**, @ The Fourm, 1125-H Military Cutoff Rd., Wilmington. **Ongoing** - Featuring works by over 100 regionally and nationally renowned artists in a variety of media. Hours: M.-Sat., 10am-6pm. Contact: 910/256-2323 or at ([www.spectrumartgallery.com](http://www.spectrumartgallery.com)).

**The ArtWorks**, 200 Willard Street, Wilmington. **Ongoing** - The ArtWorks is an art village providing art studios, gallery space, and an event venue; fostering a creative environment for artists, educational opportunities, and enhancement of the Wilmington community, through art. Our Mission is to enhance the community, assist the artist, contribute to the revitalization of downtown Wilmington, to preserve Wilmington's commercial landmarks, and to increase the livelihood of local artists and provide a place to create and display all types of art. Holiday hours: Fri., 10am-6pm; Sat, 10am-3pm and 4th Fri. 6-9pm. Contact: 910/352-7077 or at ([jim.knowles@theartworks.com](mailto:jim.knowles@theartworks.com)).

**The Golden Gallery**, @ The Cotton Exchange, 307 N. Front St., Wilmington. **Ongoing** - Featuring works by John W. Golden and Mary Ellen Golden. Hours: Mon.-Sat., 10am-5:30pm & Sun., 1-4pm. Contact: 910/762-4651 or at ([www.thegoldengallery.com](http://www.thegoldengallery.com)).

**Three Hounds Gallery**, 29 S. Front St., Wilmington. **Ongoing** - Featuring works by Wayne McDowell, Jeff Chase, Dick Roberts, Shawn Best, Kristin Gibson, Fritz Huber, Joanne Geisel, Christa Sylvester, Brian Evans, Mark Gordon, Rex Miller, and jewelry by Emily Parker. Hours: Tue.-Thur., 11:30am-5:30pm; Fri. and Sat., 11:30am-7:30pm & Sun., noon-3pm. Contact: 910/815-3330 or at ([www.threehoundsgallery.com](http://www.threehoundsgallery.com)).

## Winston-Salem Area

**Downtown Arts District**, Sixth and Trade streets, Winston-Salem. **Dec. 2, 7-10pm** - "DADA First Friday Gallery Hop," with special artist demonstrations, art exhibits, and shops and studios open evening hours. Events are free and open to the public. Gallery Hops are funded and sponsored by the Downtown Art District Association, a non profit organization, and their supporting membership. Contact: 336/722-2345.

**Blessings**, 823 Reynolda Road, Winston-Salem. **Ongoing** - Featuring works by Marsha Thrift, Christine McCormick and Sharon Grubbs. Their work encompasses original landscapes, figurative works and still life in a contemporary style of realism. Also offering an exhibit of 19th Century Chinese Ancestor Portraits. Hours: Fri.&Sat., 11am-5pm and Sun., 1-4pm. Contact: 336/922-6909.

**Delurk Gallery**, 207 W 6th Street, Winston-Salem. **Ongoing** - An artist run gallery, dedicated to the exposure and sale of current artists' work. Hours: Wed.-Sat., noon-8pm; Sun., noon-6pm; & till 10pm on 1st Fri. Contact: 336/486-3444 or at ([www.delurkgallery.com](http://www.delurkgallery.com)).

**Earthbound Arts**, 610 N. Trade St., Winston-Salem. **Ongoing** - Featuring an unique gallery showcasing the nature-related works of Gordon Jones and Lucy Duncan. Original designs in clay, copper, and stained glass as well as handcrafted herbal soaps, sterling and copper jewelry, block print cards, masks, wind chimes, garden art, clay beads, herbal teas, natural incense, beeswax candles and much more. Hours: Tue.-Sat., 11am-6pm. Contact: 336/773-1043 or e-mail at ([lucy@earthboundarts.com](mailto:lucy@earthboundarts.com)).

**Fiber Company**, 600 N. Trade Street, Winston Salem. **Ongoing** - Fiber Company is a working studio and partnership of five women creating wearable art, home accessories and textile art located in the heart of the Downtown Art District. With over 60 consignment artists, most local artists, Fiber Company offers a wide range of gift items. Hours: Tue., 11am-3pm; Wed.-Fri., 11am-5pm; Sat., 11am-3pm & by appt. Contact: 336/725-5277 or e-mail at ([fibercompany@gmail.com](mailto:fibercompany@gmail.com)).

**Island Arts On Trade**, 521 N. Liberty St., Ste. 100, in the Artists On Liberty Building, across from the DADA Community Center, Winston-Salem. **Ongoing** - Featuring visual and functional artwork by gallery artist, Gary Campbell. Also, featuring other multicultural artists and mixed media artwork throughout the year. Hours: Fri.-Sat., 1-5pm or by appt. Contact: 336/722-0510.

**Patina**, 217 W. 6th St., Winston-Salem. **Ongoing** - Featuring a unique shop with art by local potters, craftspeople, and painters. Patina also carries unique clothing, gifts, home accessories and gift baskets. Hours: Tue.-Sat., 10am-6pm. Contact: 336/725-6395.

**The Other Half**, 560 North Trade St., Winston Salem. **Ongoing** - Featuring works by Mary Ann Zotto, Chris Teague, Nic Bernard, Dodie Campbell, Jack Dent, Celeste Chapman-Dent, Ron Propst, Jason Probststein, Kathy Townsend and Mike Cowan. Hours: Tue.-Sat., 11am-5pm or by appt. Contact: 336/407-5494 or e-mail at ([peeps321@earthlink.net](mailto:peeps321@earthlink.net)).

**Village Smith Galleries/VSG Fine Arts**, 119 Reynolda Village, near Reynolda House Museum of Art, Winston-Salem. **Ongoing** - American and European watercolors, oils, antique engravings and contemporary works by Gorg, McKnight, Boulanger, Alvar, Nicole Monteran, Stephen White and other gallery artists. National and regional crafts are represented in the fields of ceramic and glass. Hours: Mon.-Sat., 10am-5pm. Contact: 336/723-3653.

**Winterfire Craft Gallery**, 145 Stratford Road, Winston-Salem. **Ongoing** - Featuring pottery by Hank Goodman as well as hand-crafted jewelry, metal sculpture, hand-thrown pottery, art glass, and calligraphy prints. Hours: Mon.-Fri., 10am-6pm; Sat., 10am-5pm & Sun., 11am-5pm. Contact: 336/748-0145.



Visit  
*Carolina Arts*  
on Facebook

Go to this [link](#) and  
"like" us!



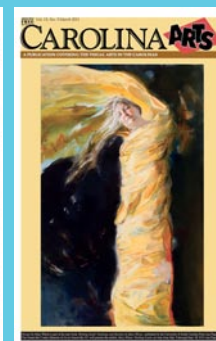
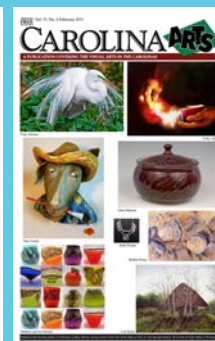
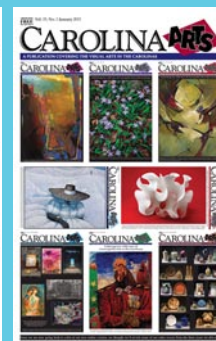
*Carolina Arts* is now on  
**Twitter!**

Sign up to follow  
Tom's Tweets, click below!



[twitter.com/carolinaarts](https://twitter.com/carolinaarts)

Don't forget about our website:  
[www.carolinaarts.com](http://www.carolinaarts.com)



You can find [past issues](#) all the way back to  
August 2004!

You can find [past articles](#) all the way back to  
June 1999

Also don't forget about our two blogs:  
[Carolina Arts Unleashed](#)  
[Carolina Arts News](#)

Send us your email address to be added  
to our list to receive notice of each  
monthly issue.

[info@carolinaarts.com](mailto:info@carolinaarts.com)