

# SC Institutional Galleries

continued from Page 31

## Orangeburg

**I.P. Stanback Museum and Planetarium**, SC State University, 287 Geathers Street, Orangeburg. **Ongoing** - "The Influence of James Brown: His Imprint on Music, Dance, Style and Politics". In 2008, the Stanback was selected to preserve the legacy of James Brown, when museum curators were invited to Brown's Estate in Beech Island, SC, to retrieve items for preservation. The collection boasts an impressive list of items that capture the life and legacy of the 'Hardest Working Man in Show Business.' The collection features costumes, clothing, instruments, unpublished photographs, early cuts of vinyl recordings, handwritten music, awards, trophies and more. Hours: Mon.-Fri., 9am-5pm or by appt. Contact: 803/536-7174 or at (<http://www.scsu.edu/researchoutreach/ipstanback-museumandplanetarium.aspx>).

**Lusty Gallery**, Orangeburg County Fine Arts Center, Edisto Memorial Gardens, 649 Riverside Drive, Orangeburg. **Ongoing** - Featuring a permanent display of works by Coan Culler, Pernille Dake, Betty Edmonds, Elsie Fogle, Michiko Johnston, Zita Mellon, Barbara Townsend, Isaiiah Zagar, and local schoolchildren. Hours: Mon.-Thur., 8:30am-4:30pm & Fri., 8:30am-noon. Contact: Elizabeth Thomas at 803/536-4074 or at (<http://ocfac.net/>).

## Pawleys Island, Litchfield & Murrells Inlet

**Brookgreen Gardens**, 1931 Brookgreen Garden Drive, US 17, south of Murrells Inlet. **Noble Gallery, Through Jan. 1, 2018** - "Annual Holiday Exhibit," featuring a beautiful display of free-form glass designed and hand-blown by glass artists Ed & Barbara Streeter of Conway Glass. **Ongoing** - "Lowcountry: Change and Continuity," a major new exhibit, tells the story of human interaction with this land over the centuries. It features wall size photomurals by SC naturalist photographer Tom Blagden, along with a range of artifacts tracing the history of man's occupation of this extraordinary landscape. **General Gardens, Ongoing** - One of the largest collections of outdoor sculpture in America. This preeminent collection of American representational sculpture includes - 560 works by 240 artists - representing such well-known artists as Charles Parks, Daniel Chester French, Carl Milles, August Saint-Gaudens and Anna Hyatt Huntington. Hours: daily, 9:30am-5pm. Admission: Yes. Admission to Brookgreen is good for seven days. Contact: 843/235-6000, 800-849-1931, or at ([www.brookgreen.org](http://www.brookgreen.org)).

ALTERNATE ART SPACES - Litchfield **Gallery at Applewood House of Pancakes**, 14361 Ocean Highway, Litchfield Beach. **Ongoing** - features works of accomplished local artists and photographers who are members of the Seacoast Artists Guild of South Carolina dedicated to advancing excellence in the visual arts through teaching, exhibits, workshops, art shows & sales. Hours: daily 6am - 2pm. Contact: at ([www.seacoastartistsguild.com](http://www.seacoastartistsguild.com)).

## Richburg

**Olde English District Visitors Center & Market**, 3200 Commerce Drive, Suite A, Richburg. **Ongoing** - This is your one stop shop for finding specialty food products, art (pottery, jewelry, etc.) and many other local, unique items from our region. We also carry a variety of South Carolina souvenirs. Hours: daily, 9am-5pm. Contact: 803/385-6800 or at ([www.oldeenglishmarket.com](http://www.oldeenglishmarket.com)).

## Ridge Spring

**Art Association of Ridge Spring Gallery**, Art Center in Ridge Spring, located behind the Ridge Spring Civic Center, 108 Maintenance Shop Circle, Ridge Spring. **Ongoing** - Featuring works in a variety of media by: Ron Buttler, Sammy Clark, Christie Dunbar, Donna Minor, Joanne Crouch, Gloria Grizzle, Donna Hatcher, Linda Lake, Samantha McClure, Danny O'Driscoll, Gwen Power, Deborah Reeves, Mary Rogers, Emily Short, Marion Webb, and Barbara Yon. Hours: Fri. & Sat., 10am-4pm or by appt. Contact: 803/685-5003, 803/685-5620 or at (<http://sites.google.com/site/artassnridgespring/Home>).

## Rock Hill

**Center for the Arts**, 121 East Main St., Rock Hill. **Dalton and Perimeter Galleries, Through Dec. 29** - "Vernon Grant's Winter Wonderland". Grant's favorite subject, Santa Claus, along with his whimsical gnomes, and published scenes of winter. **Edmund Lewandowski Classroom Gallery, Through Dec. 29** - "York County High School Art Show". Coordinated by the Arts Council of York County and the Catawba River

Art Guild, awards are sponsored by the Yorkville Artists' Guild. Hours: Mon.-Thur., 9am-6pm; Fri., 9am-5pm; and on 2nd and 4th weekends, Sat., 10am-2pm; & Sun., 2-4pm. Contact: 803/328-2787 or at (<http://www.yorkcountyarts.org/>).

**The Rock Hill Pottery Center**, Getty's Art Center, 201 East Main Street, in Old Town Rock Hill. **Ongoing** - Featuring works by Bob Hasselle, Christine White, Katherine Petke, Hope Fregerio, and Brian Schauer. Hours: Mon.-Fri., 10am-4pm and Sat., 10am-2pm. Contact: call 803/370-8109 or find then on Facebook.

## Spartanburg

**Throughout Spartanburg, Through Apr. 4, 2018** - "Lighten Up Spartanburg," organized by the Spartanburg Art Museum, is a large scale public art project that bolsters the cultural vitality of downtown Spartanburg, expands the local economy through tourism, provides opportunities to local and regional artists, and fosters connections between local businesses and the arts. Special thanks to the City of Spartanburg, Tim Carter + crew, Tindall Concrete, and Wakefield Automotive. Contact: Spartanburg Art Museum at 864/582-7616 or at ([www.spartanburgartmuseum.org](http://www.spartanburgartmuseum.org)).

**Chapman Cultural Center**, 200 East St. John Street, Spartanburg. **Sundays from 1-5pm** - "Sundays Unplugged". All of the exhibits are open and most are free, including Spartanburg Art Museum, Artists' Guild of Spartanburg Gallery, Student Galleries, Spartanburg County History Museum, and Spartanburg Science Center. In addition, local artists sell their artwork in the Zimmerli Plaza at the Sunday Art Market. And, as a final added attraction, a local musician provides a free mini-concert 2-4 p.m. Contact: call 864/542-2787.

**Curtis R. Harley Art Gallery**, Performing Arts Center, USC-Upstate, 800 University Way, Spartanburg. **Through Dec. 1** - "Upstate Art Faculty Show". Hours: Mon.-Fri., 9am-5pm. Contact: Gallery Director, Jane Nodine at 864/503-5838 or e-mail at ([jnodine@uscupstate.edu](mailto:jnodine@uscupstate.edu)).

**Justine V.R. "Nita" Milliken Wing**, Milliken Fine Arts Building, Converse College, Spartanburg. **Ongoing** - Featuring a collection of 52 prints, given by Spartanburg resident Frank Toms which includes works by Joan Miro, Salvador Dali, Alexander Calder, Helmut Newton and others. Hours: Mon.-Fri., 9am-5pm. Contact: 864/596-9181 or e-mail at ([artdesign@converse.edu](mailto:artdesign@converse.edu)).

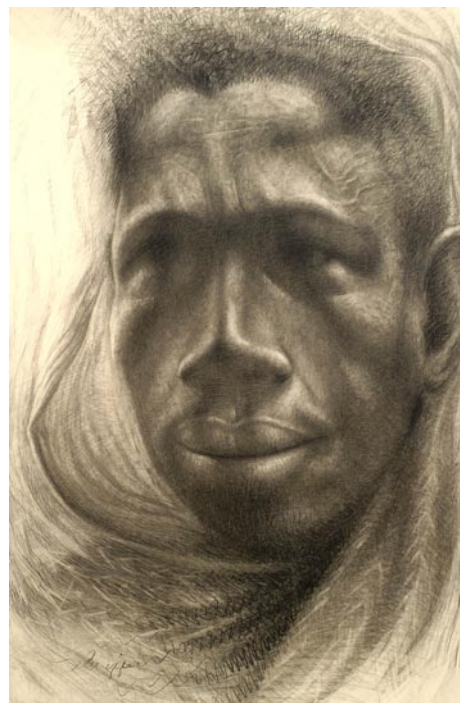
**Martha Cloud Chapman Gallery**, Campus Life Building, 429 North Church St., Spartanburg. **Through Dec. 18** - "Buddhism in Sites and Images". This exhibition includes selected photographs by Dr. David Efurud, associate professor of art history at Wofford, taken at ancient Buddhist sites in India; ink rubbings depicting Buddhist deities from stone reliefs carved during the Tang Dynasty in China; and current sculptures reflecting ancient practices of image-making. Originating in India, Buddhism and Buddhist artistic traditions were transmitted to Southeast and East Asia and eventually throughout the world. The exhibited works provide insight into understanding Buddhist art, rituals, practices and religious life. Hours: Mon.-Fri., 9am-9pm; Sat., noon-6pm & Sun., noon-9pm. Contact: 864/597-4300.

**Rosalind Sallenger Richardson Center for the Arts**, Wofford College, Spartanburg. **Richardson Family Art Museum, Through Dec. 18** - "In the Service of Teaching and Learning: An Inaugural Exhibition of the Wofford Fine Arts Collection". Selected works from Wofford's Fine Arts Collection span the Bronze Age in the ancient Near East to the late 20th century in America and are a vital educational resource that strengthens, supports and contributes to academic research on campus. By showcasing various cultural and historical objects, the exhibition presents a unique opportunity for cross-disciplinary teaching and learning that contributes to the superior liberal arts education at Wofford. **Richardson Family Art Gallery, Through Dec. 21** - "Whetsell Exhibition: "Dying on the Vine" by Sheridan Kate Murray". The 2017 Whetsell Fellowship Exhibition, on display in the Richardson Family Art Gallery, features the work of student-artist Sheridan Kate Murray, recipient of the 2017 Whetsell Fellowship. Designed to support and promote the visual arts at Wofford, the Whetsell Fellowship is a summer fellowship established in 2006 by Dr. William O. Whetsell in memory of his brother, Dan Whetsell. **Ongoing** - Featuring the Cerise and Amber Persian Ceiling sculptors created by renowned American sculptor Dale Chihuly. Admission: Free. Hours: Tue, Wed, Fri. & Sat., 1-5pm; Thur., 1-9pm; and closed Sun. & Mon. Contact: call Laura Corbin at 864/597-4180,

e-mail to ([laura.corbin@wofford.edu](mailto:laura.corbin@wofford.edu)) or at ([www.wofford.edu](http://www.wofford.edu)).

**Sandor Teszler Library Gallery**, Wofford College, 429 North Church St., Spartanburg. **Through Dec. 18** - "WWI: At Home and Abroad," presents an exhibition of artifacts which remembers Wofford men who served during "the war to end all wars" (1914-1918). Four-hundred-fourteen men from the Wofford College family served in the Great War, World War I. Seventeen did not come home. Hours: Mon.-Thur. 8am-12am; Fri., 8am-7pm; Sat., 10am-5pm; Sun., 1pm -12am. Contact: 864/597-4300.

**Spartanburg Art Museum**, Chapman Cultural Arts Center, 200 East St. John Street, Spartanburg. **Through Dec. 10** - "Paper Worlds" is a group exhibition featuring the work of nine artists who push the boundaries and capabilities of paper. Though digital technology has become a staple in modern life, there is no denying that paper—from business cards to cardboard boxes to printer stock to picnic napkins—refuses to be replaced by it. From hand-pulled prints meticulously cut and assembled into three-dimensional shapes, to delicate papier-mâché stop-motion animation, to using recycling as part of the creative process, these artists remind us that although modern technology is ubiquitous, we still live in a "Paper World". Participating artists include: Roger Chen, Charles Clary, Hanne Frey Husø, Christina Laurel, Wan-Yi Lin, Shona Macdonald, Sky Pape, Adrian Rhodes, and Mark Rospenda. Admission: Yes. Hours: Tue.-Sat., 10am-5pm; Sun., 1-5pm; and till 9pm on 3rd Thur. of each month. Closed on national holidays. Contact: 864/582-7616 or at ([www.spartanburgartmuseum.org](http://www.spartanburgartmuseum.org)).



Work by John Biggers

**The Johnson Collection Gallery**, 154 W. Main Street, Spartanburg. **Through Dec. 22** - "To Teach Is To Learn: Lessons in African American Art of the South," is both an exhibition and an educational tool. This curated presentation of 30 objects illuminates how African Americans have continuously participated in, pioneered, taught, and transformed American art, in the South and beyond— from the traditional nineteenth-century portraiture of Joshua Johnson to the groundbreaking Abstract Expressionism of Alma Thomas. The exhibition includes both formally trained and self-taught artists such as Benny Andrews, John Biggers, Selma Burke, Edwin Harleston, Clementine Hunter, William H. Johnson, Lo's Mailou Jones, James Porter, Leo Twiggs, and Hale Woodruff. Hours: Tue. & Thur., 1-5pm and on 3rd Thur., 5-9pm for Art Walk. Contact: 864/594-5834 or at (<http://the-johnsoncollection.org/tjc-gallery>).

**UPSTATE Gallery on Main**, 172 E. Main Street, Spartanburg. **Through Dec. 30** - Finding Language, featuring works by Palmetto State resident Mary Robinson. A reception will be held on Nov. 16, from 5-8pm. Drawing upon our complex and tumultuous relationship with nature, Robinson's artworks invoke both the fluidity of the natural world and the intermittent -- and at times dramatic -- reconfigurations due to natural disruption and renewal. **Ongoing** - The gallery is dedicated to contemporary and original exhibitions that include selections from the permanent collection by artists Andy Warhol, Jerry Uelsmann and Beatrice Riese. Hours: Tue.-Sat., noon-5pm or by appt. Contact: Jane Allen Nodine, director by e-mail at ([jnodine@uscupstate.edu](mailto:jnodine@uscupstate.edu)), call 864/503-5838, or Mark Flowers, exhibits coordinator by e-mail at ([Mflowers@uscupstate.edu](mailto:Mflowers@uscupstate.edu)), or call 864/503-5848.

**West Main Artists Cooperative**, 578 West Main St., Spartanburg. **Through Dec. 30** - "Open Doors," featuring works by 44 members of West Main Artists Co-op. **Ongoing** - Featuring a twenty thousand square foot facility offering affordable studio space and featuring

works by 50 local artists. Come to see works from local artists, attend workshops, shop in the retail store, or meet any of the artists in their studios. Hours: Thur., 3-6pm; Sat., 10am-4pm; with extended hours on the 3rd Thur. of each month until 9pm for Spartanburg's Art Walk. Contact: 864 804-6501 or at ([www.westmain-artists.org](http://www.westmain-artists.org)).

ALTERNATE ART SPACES - Spartanburg **Campus of University of South Carolina Upstate**, 800 University Way, Spartanburg. **Ongoing** - "USC Upstate Outdoor Sculpture Collection". Available to viewers year-round, these 13 works can be seen in front of the Campus Life Center, the Humanities and Performing Arts Center, the Horace C. Smith Science Building, Tukey Theatre and the Kathryn Hicks Visual Arts Center. While the majority of the outdoor sculptures belong to internationally acclaimed artist Bob Doster, other artists included are Jim Gallucci, Daingerfiled Ashton, Winston Wingo, Dan Millspaugh, Adam Walls, and Hanna Jubran. Cell phone tour info at (864-607-9224). For more info contact Jane Nodine at 864/503-5838 or e-mail to ([jnodine@uscupstate.edu](mailto:jnodine@uscupstate.edu)).

**Headquarters Library**, Spartanburg County Public Libraries, 151 South Church Street, Spartanburg. **AT&T Exhibition Lobby, Ongoing** - Displaying exhibitions year round ranging from art exhibits to local history to nationwide exhibits of varying topics. Hours: Mon.-Fri., 9am-9pm; Sat., 9am-6pm; and Sun., 1:30-6pm. Contact: Miranda Mims Sawyer by e-mail at ([mirandas@infodepot.org](mailto:mirandas@infodepot.org)) or call 864/285-9091. **The Upper Level Gallery (administrative office on the 3rd floor), Ongoing** - Display local artisans artwork. Hours: Mon.-Fri., 9am-5pm. Contact: Miranda Mims Sawyer by e-mail at ([mirandas@infodepot.org](mailto:mirandas@infodepot.org)) or call 864./285-9091.

## Summerville

ALTERNATE ART SPACES - Summerville **Azalea Park**, Main Street and West Fifth Street South, Summerville. **Ongoing** - Featuring 21 pieces of sculpture in Summerville's permanent outdoor collection donated by Sculpture in the South and a few others in other locations in Summerville. One of the sculptures is located in Hutchinson Park, Summerville's Town Square. Hours: daylight hours. Contact: 843/851-7800 or at ([www.sculptureinthesouth.com](http://www.sculptureinthesouth.com)).

## Sumter

**Sumter County Gallery of Art**, Sumter County Cultural Center, 135 Haynesworth St., Sumter. **Through Jan. 12, 2018** - "The Art of Deane Ackerman" and "Terrell Clark: EYES of Havana". Ackerman, a native of Illinois, attended Northwestern University for one year, and then continued her college work as a sculpture major at the School of the Art Institute in Chicago. Married, with 3 children and 3 grandchildren, she has been a Sumter resident since 1965 and is a charter member of the Sumter Artist's Guild, which was founded in 1972. She worked almost exclusively as a sculptor until 1980, producing many pieces now found in private collections across the country. Though she has worked in a variety of mediums, her focus for the past 30 years has been colored pencil drawing, for which she has won numerous awards. A native of Meridian, MS, Terrell Clark is a photographer with an exceptional eye who possesses that rare ability to capture those precious moments in life that would otherwise be missed and forever lost in the vortex of forgotten memories. Clark's beginning in photography is quite interesting. When he was in ninth grade, he built a pinhole camera from a Maxwell House coffee can. To this day he still has his first picture, which was taken with the pinhole camera. **Artisan Center Gift Shop** - Featuring art objects from local and regional artists. Hours: Tues-Sat 11-5pm & Sun., 1:30-5pm. Contact: 803/775-0543 or at ([www.sumtergallery.org](http://www.sumtergallery.org)).

## Walterboro

**SC Artisans Center**, 334 Wichman Street, 2 miles off I95, exits 53 or 57, Walterboro. **Ongoing** - Featuring work of nearly 450 of the SC's leading artists. The Center offers educational and interpretive displays of Southern folklife. Its mission is to enhance the appreciation and understanding of the rich cultural heritage of South Carolina. **Also** - "Handmade: A Celebration of the Elements of Craft". Artists and craftsmen from all over the state will sit on the porch of the center creating their artwork. This event takes place every 3rd Sat. of each month 11am-3pm. Hours: Mon.-Sat., 10am-6pm & Sun., 1-6pm. Contact: 843/549-0011 or at (<http://www.scartisanscenter.com/>).