

NC Commercial Galleries

continued from Page 49

(www.2ndfridayartwalk.com).

Animation and Fine Art Galleries, University Mall, 201 S Estes Dr., Chapel Hill. **Ongoing** - Featuring contemporary works of art and animation art. Hours: Mon.-Sat., 10am-6pm. Contact: 919/968-8008 or at (www.animationandfineart.com).

Black Mountain Gallery, 1800 #9 E. Franklin Street, Eastgate Shopping Center, Chapel Hill. **Ongoing** - Featuring handwrought designer jewelry by artisans from throughout the United States. Hours: Mon.-Sat., 10am-6pm. Contact: 919/967-8101.

Blackwood Station Gallery, 6113 Hwy. 86N., Chapel Hill. **Ongoing** - Featuring functional & fine art, sculpture and fine art prints. Hours: Tue.-Fri., 11am-7pm; Sat., 10am-6pm, & Sun., noon-6pm. Contact: 919/968-1360.

Cameron's, University Mall, Chapel Hill. **Ongoing** - Featuring contemporary American crafts and pottery, folk art and functional art objects. Hours: Mon.-Sat., 10am-9pm & Sun., 1-6pm. Contact: 919/942-5554.

Chapellier Fine Art, 105 Arlen Park Drive, Chapel Hill. **Ongoing** - Fine, investment quality 19th & 20th century American art. Hours: Mon. - Fri. by appointment. Contact: 919/967-9960 or at (www.citysearch.com/rdu/chapellier/).

Dirt Road Gallery, 8218 Bright's Way, Chapel Hill. **Ongoing** - Featuring handcrafted items - including paintings, carvings, molas, textiles & fabrics, ceramics, beads and jewelry from West Africa, the Middle East, Central America, and the US collected over years of traveling. Hours: Sat. & Sun., 11am-6pm & by appt. Contact: 919/933-6999 or at (www.dirtroadgallery.net).

Fat Black Cat-Art Lounge, 103 W. Weaver Street, kitty corner from Carr Mill Mall, Carrboro. **Ongoing** - Mostly Representational works by local, regional and national artists. Hours: Tue.-Fri., 9am-4:30pm & sat., 10am-5pm. Contact: 919/260-7420 or at (www.FatBlackCat-ArtLounge.com).

N.C. Crafts Gallery, 212 W. Main St., corner of Weaver and West Main Sts., Carrboro. **Ongoing** - Offering a wide assortment of items handcrafted by North Carolina artisans. You'll find contemporary and traditional pottery, blown glass, wood, jewelry, metalwork, toys, folk art, garden sculpture, kaleidoscopes, baskets, fiber art and more. The Gallery currently carries the work of more than 500 North Carolinians, from the mountains to the shore. The gallery also hosts two shows a month. Shows begin the first of each month and give the featured artist the opportunity to showcase an entire body of work. Hours: Mon.-Sat., 10am-6pm & Sun., 1-4pm. Contact: 919/942-4048 or at (<http://nc-craftsgallery.com/>).

Studio 91 Fine Art Gallery, Meadowmont Village, Chapel Hill. **Ongoing** - Featuring works by Jean Abadie, Thomas Arvid, Dimitri Danish, Michael Flohr, Edward Lewis, and Fabian Perez. Hours: Mon.-Thur., 10am-6pm; Fri., 10am-8pm & Sat., 10am-5pm. Contact: 919/933-3700.

Tyndall Galleries, University Mall, 201 S. Estes Drive, at the corner of Fordham Blvd. (US 15-501 Bypass) and S. Estes Drive, Chapel Hill. **Ongoing** - In 2002 the Tyndall Galleries relocated from Durham to a beautiful award-winning contemporary space designed by architect Philip Szostak at University Mall in Chapel Hill. We have always been pleased and honored to represent a renowned group of the finest painters, sculptors, photographers, ceramicists and textile artists in the Southeast. Hours: Thur.-Fri., 1-6pm. Contact: call 919-942-2290 or at (www.tyndallgalleries.com).

Charlotte Area

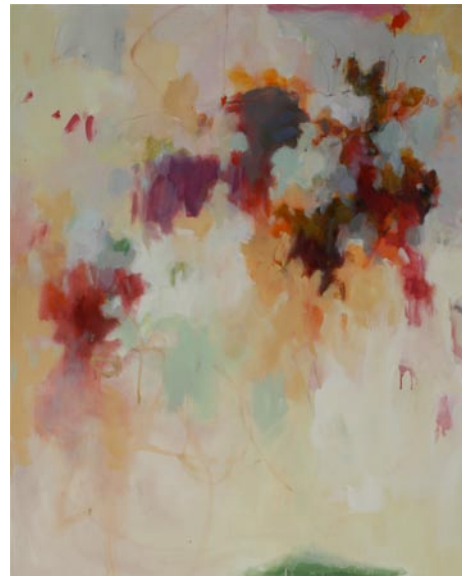
North Davidson Street Arts District Gallery Crawl - From 6-9pm on the 1st & 3rd Fridays of each month.

Uptown Gallery Crawl - From 6-8pm on the 1st Friday of each month.

SouthEnd Gallery Crawl - From 6-9pm on the 1st Friday of each month.

Allison Sprock Fine Art, 600 Queens Rd., the gallery shares space with The Nichols Company in one of Myers Park's oldest houses, Charlotte. **Ongoing** - The gallery represents many well-known artists from all over the world. Some of the featured artists are very famous; others are emerging including:

Andre Bludov, Constantin Chatov, Marc Chatov, Roman Chatov, Gee Gee Collins, Larry Davis, Noah Desmond, Margaret Dyer, Sabre Esler, Stephen Fry, Benjamin Hollingsworth, Linda James, Dimitri Kourouniotis, Stan Mullins, Anne Neilson, Becky Ollinger, Spencer Reid, Felice Sharp, Tracy Sharp, Louis St. Lewis, Elizabeth Stehling, Harry Stewart, Cate Wagoner, Karen Weihs, Alice Williams, Sean Williams, and Kathy Wochele. Hours: Mon.-Sat., 10am-6pm. Contact: 404/274-5829 or visit (www.allison-sprockfineart.com).



Work by Joyce Howell

Anne Neilson Fine Art, Suite 16, Dilworth Artisan Station, 118 East Kingston Avenue, Charlotte. **Through Mar. 2** - "Abstract Show," featuring works by Amy Dixon, Bonnie Goldberg, Charles Emery Ross, Constance Bachmann, Ellen Levine Dodd, Karen Cappotto, Kerry Steele, Lauren Adams, Jacquie Gouveia, and Joyce Howell. **Ongoing** - The gallery represents over 30 esteemed national and international artists, as well as works by noted painter and author Anne H. Neilson. The gallery is an outgrowth of Neilson's ever-growing popularity sparked by her Angels Series paintings and book. Hours: Mon.-Fri., 10am-5pm & Sat. by appt. Contact: 980/253-9566 or at (<http://www.anneneilsonfineart.com/ourgallery>).

Art House Studios, 3103 Cullman Ave., off 36th Street in the NoDa District, Charlotte. **Ongoing** - Featuring a complex of working studios by area artists. Hours: during Gallery Crawls and by appt. Contact: 704/577-4587 or e-mail at (arthouse_noda@earthlink.net).

Artists' Atelier Carolina, located in the Pentes Artworks Gallery & Studios bldg., 1346 Hill Rd., Charlotte. **Ongoing** - Featuring works by Jim Fales, Fay M. Miller, Jack Pentes, Betty G. Robinson, Gregory Weston, and Peggy Hutson Weston. Hours: by appt. Contact: 704/552-6200.

Ben Owen Pottery Gallery, inside The Ritz-Carlton, Charlotte, 201 East Trade Street, Charlotte. **Ongoing** - The gallery offers 75-100 one-of-a-kind pieces of Ben Owen III pottery, with prices beginning at \$45. Works will range from pots, vases, jars, bowls and platters to major showpieces and spectacular larger works of art. All items are hand-created by Ben Owen, who also will make special appearances at The Ritz-Carlton, Charlotte for 2011 art weekends and art demonstrations. Hours: open daily from 9am-6pm. Contact: 704/547-2244 or at (<http://www.ritzcarlton.com/en/Properties/Charlotte/Default.htm>).



Work by Russell Jewell

Charlotte Fine Art Gallery, 7510 Pineville-Matthews Road, located in South Charlotte's Carmel Village at the corner of Pineville-Matthews and Carmel Road, Charlotte. **Feb. 4 - 28** - "Color Elements". A reception will be held on Feb. 6, from 6-9pm. Featuring two South Carolina artists: watercolor paintings by Russell Jewell and fused/slumped glass by Linda Campbell Pryor. Also on view: Works by award-winning CFA artists from across the country. **Ongoing** - Original works of art from award-winning artists across the United States, as well as the Carolinas. Nationally and internationally-recognized artists in 2-and 3-dimensional fine art. Specializing in a wide array of media and styles represented: Representational, Impressionism, Expressionism, Abstraction / Paintings, Sculpture, Prints.

Consulting Services for individual and corporate clients, as well as, private event opportunities. Hours: Tues 10am-4pm; Wed.-Thur., 10am-9pm; Fri., 10am-6pm; Sat., 10am-2pm or by appt. The gallery will be closed from Dec. 21 - Jan. 5. Contact: call 704/541-0741 or at (www.CharlotteFineArt.com).

Ciel Gallery: A Fine Arts Collective, 128-C E. Park Ave., Historic Southend, Charlotte. **Feb. 6 - 28** - "Reflective Hearts," featuring works by Randy Leibowitz Dean and Miriam Durkin. A reception will be held on Feb. 6, from 6-9pm. The artists chose this title because, although their works are very different - Dean's are abstract; Durkin's are figurative - they both feel they are working from the heart. They share a joy in a creative process that is slow, nurtured by reflection, and that allows their work to evolve in serendipitous ways. **Ongoing** - Featuring works by: Tina Alberni (painter), Tim Shaeffer (painter), Teresa Hollmeyer (glass mosaic), Amy Hart (metal sculpture), Caroline Coolidge Brown (collage and mixed media), Diane Pike (painter), Donna Sandoe (jewelry), Miriam Durkin (painter), Chris Craft (encaustic), Cindi Spillman (photography), Elyse Frederick (mixed media), Randy Leibowitz Dean (wood carving and painting), Rebecca Haworth (collage and mixed media), Laura McRae Hitchcock (painting), Emily Andress (paintings), Claudia Soria (painting) and Pam Goode (mosaic). Hours: Tue.-Fri., 11am-6pm & Sat., 10am-5pm and 1st Fri. 6-9pm. Contact: 980/202-2435 or at (www.cielcharlotte.com).

Coffey and Thompson Gallery, 109 W. Morehead @ S. Tryon St., Charlotte. **Ongoing** - Oils by Richard Plasschaert, etchings by Gordon Allen, prints by Ralph McDonald, Bev Doolittle, G. Harvey, Mort Kunstler, Don Troiani and Charles Frace. Hours: Mon.-Fri., 8:30am-5:30pm & Sat., 10am-2pm. Contact: 704/375-7232 or at (www.coffeyandthompson.com).

Elder Gallery, 1520 South Tryon Street, Charlotte. **Ongoing** - Featuring a selection of landscape paintings by Leon A. Makielski (1885 - 1974) which were executed in France and in the United States over his long career of painting, as well as works from the Ernest Walker Collection, and the Carl Plansky Collection. Hours: Wed.-Fri., 10am-5:30pm; Sat., 10am-2pm; or by appt. Contact: 704/370-6337 or at (www.elderart.com).

Foster's Frame & Art Gallery, 403-A Old Statesville Rd. N, Huntersville. **Ongoing** - Featuring original paintings by local artists: Nellie Ashford - folk art, Edna Barker - landscape, Andrea Cook - Abstract/Fabric, Evelyn Kadir, Abstract/Musical, Carolyn Saine, landscape. Hours: Mon.-Fri., 10am-4pm, Sat. 10am-4pm. Contact: 704-948-1750.

Harris Holt Gallery, 1717 Kenilworth Avenue, Charlotte. **Ongoing** - Featuring watercolors, oil paintings and limited edition prints by Harris Holt. Hours: Mon.-Fri., 9:30am-5:30pm. Contact: 704/373-9090 or at (www.fostersframeandartgallery.com).

Hodges Taylor Art Consultancy 118 East Kingston Avenue, Suite 25, Charlotte. **Ongoing** - The gallery represents contemporary artists of the southeast, including paintings, prints, photographs and sculpture. The gallery offers a public venue in uptown Charlotte for viewing artwork and serves as art consultants for collectors and businesses. Hours: Tue.-Sat., by appt. only. Contact: 704/334-3799 or at (www.hodgestaylor.com).

House of Africa Gallery, 1215 Thomas Avenue, Charlotte. **Ongoing** - Featuring the area's largest selection of African art, including: masks, statues, carved artwork, handmade jewelry, paintings, plus traditional African musical instruments. Hours: Mon.-Sat., 11am-8pm. Contact: 704/376-6160.

Hughes Gallery, 2015 Ayrley Town Blvd. @ N Kings Parade, Ste. 107-c, Charlotte. **Ongoing** - The gallery is a modern art gallery with a focus on sculpture, installation, works on paper, photography and painting. Hours: Mon.-Sat., 10am-6pm. Contact: 704/492-9934 or at (www.hughesgallery.artlogsites.com).

Jerald Melberg Gallery, 625 South Sharon Amity Road, near corner of Providence Road, next to restaurant Hotel Charlotte, Charlotte. **Through Feb. 28** - Featuring a solo exhibition of new paintings, works on paper and sculpture by one Argentina's most respected artists, Raul Diaz. Internationally known and exhibited, Diaz has been represented by the Gallery for over 15 years. Although he studied architecture, Diaz could not avoid the overwhelming call within himself to be a painter. **Ongoing** - The gallery represents artists from all regions of the United States, Argentina and Spain, exhibiting paintings, prints, and sculpture. The gallery features solo and group exhibitions as well as consulting services for individual collectors, corporations and museums. Hours:

Mon. - Sat., 10am-6pm. Contact: 704/365-3000 or at (www.jeraldmelberg.com).



Work by Vicki Sawyer

Lark & Key Gallery and Boutique, 128 E. Park Ave, Ste. B, (Southend) Charlotte. **Feb. 6 - Mar. 28** - "Lucky 7," a seven-year anniversary exhibit. Participants include: Duy Huynh, along with Janet Eskridge, Elizabeth Foster, Judy Klich, Angie Renfro, Vicki Sawyer and Mary Alayne Thomas. **Ongoing** - The gallery showcases artwork, pottery and jewelry by local, regional and national artists including Vicki Essig, Anna Johnson, Jennifer Mecca, Rebecca Maillette, Seed & Sky, Andrew Stephenson, and Julie Wiggins. Hours: Tue.-Sat., 11am-5pm. Gallery Crawl Fridays until 9pm. Contact: 704/334-4616 or at (www.larkandkey.com).

Maddi's Gallery, 1530 East Boulevard, Charlotte. Named "Top Retailer of American Craft in the United States for 2009" by The "Niche Magazine". **Ongoing** - Featuring fine contemporary craft by more than 160 national artists; specializing in Southern folk art with paintings, pottery and carvings by many of the South's most notable folk artists. Hours: Mon.-Fri., 10am-7pm; Sat., 10am-6pm & Sun. noon-5pm. Contact: 704/332-0007.

McCull Fine Art, 208 East Boulevard, at South and East Boulevard, Charlotte. **Ongoing** - One of the premiere galleries in the Southeast, dealing in fine American and European paintings. Hours: Tue.-Fri., 10am-6pm & Sat., 10am-3pm. Contact: 704/333-5983 or at (www.mccullfineart.com).

Merrill-Jennings Galleries, 463 S. Main St., in the historic yellow bungalow in Davidson's Art District, Davidson. **Ongoing** - The gallery offers investment-quality original art by internationally recognized painters, top local artists, and talented newcomers. Specialties range from Surrealism to African American Folk Art, with special emphasis on women, and minority painters. Artists include Susan Jennings, Addie James, Loren DiBenedetto, Jodi John, Paul R. Keysar, Tyler Strouth, Virginia Quillen, Betsey Hampton, Michael Parkes, and many others. Hours: Mon.-Sat., 10am- 5pm. Contact: 704/895-1213 or at (www.merrilljennings.com).

MoNA Gallery, 1900 N. Brevard Street, Charlotte. **Ongoing** - MoNA gallery currently represents nineteen local, regional, and national artists whose works embody a quiet simplicity. Through line, texture, layering, and structural references, our artists create symbolic parallels to man's effect on nature, our journey, our home, and the passage of time. At MoNA our goal is to make collecting art easy and accessible to everyone. Our mix of established and emerging artists ensures that whatever your budget you'll be able to find a beautiful original work. Hours: Thur. - Sat., 11am-6pm. Contact: 704/390-0495 or at (www.monacharlotte.com).

Nancy Couick Studios and Gallery, 10100 Park Cedar Dr., Suite 188, Charlotte. **Ongoing** - Gallery features works by New Orleans artist: Michael Smiraldo, regional artists: Nancy Smith Couick, Sharron Burns, Susan Hinrichs, Charlotte Fairman, Mary Ellen Wilkerson, Vivian Carroll and others. Hours: Mon.-Fri., 10am-5pm (except Tues. 1-9pm) and Sat. & Sun. by appt. Contact: 704/541-6944 or at (www.nancycouick.com).

One Eared Cow Glass - Charlotte, in the Nordstrom, Neiman Marcus, and Belk wing of South-Park Mall, 4400 Sharon Road, Charlotte. **Ongoing** - Handblown glass by Tom Lockart & Mark Woodham, including perfume bottles, ornaments, vases, sculpture, bowls, and paperweights, in all price ranges. Hours: Mon.-Thur., 11am-5pm; Fri.-Sat., noon-7pm; and Sun., 12:30-6pm. Contact: 803/254-2444 or at (www.oneearedcow.com).

Picture House Gallery, 1520 E. 4th Street, Charlotte. **Ongoing** - Featuring Frederick Hart

continued on Page 51