

# Corrigan Gallery in Charleston, SC

continued from Page 9

presenting Art with a Presence and a Future, representing artists who are local and accomplished. Mounting 6-10 shows a year, the gallery offers the opportunity to collectors and the viewing public to see contem-

porary fine art in an intimate setting.

For further information check our SC Commercial Gallery listings, call the gallery at 843/722-9868 or visit ([www.corrigangallery.com](http://www.corrigangallery.com)).

## Lowcountry Artists Gallery in Charleston, SC, Features Works by Joyce Harvey

Lowcountry Artists Gallery in Charleston, SC, will present *Vibrant Interpretations*, featuring Lowcountry water-inspired oil paintings in vibrant color and texture by Joyce Harvey, on view from Mar. 7 - 31, 2014. A reception will be held with an art demo on Mar. 7, from 5-8pm.

Harvey lives, works, plays and paints in Charleston. Her favorite times are spent boating Lowcountry marshes and summer sailing in the Carolinas - the inspiration for this series of paintings.

An avid sailor - Harvey's art reflects a lifelong love of the water and boats. She is known for her energetic, vibrant colored, palette knife oil paintings as well as her serene marshes, and seaside scenes. Harvey explains, "Painting is a way for me to capture or interpret a beautiful memory, thought or feeling in an unexpected way".

Harvey has worked in television for more than 25 years, having always enjoyed the challenge of visually telling stories. This included eight years as an anchor, reporter and producer for the CNN networks. Today, oils and canvas are her tools for telling stories. She is a University of Colorado graduate



Work by Joyce Harvey

and still looks for every opportunity to play in the Colorado snow.

For further information check our SC Commercial Gallery listings, call the gallery at 843/577-9295 or visit ([www.lowcountryartists.com](http://www.lowcountryartists.com)).

## The McClellanville Arts Council in McClellanville, SC, Offers Exhibit & Performance Focused on Loss

The McClellanville Arts Council in McClellanville, SC, will present *Ode to...*, on view at the McClellanville Arts Center, from Mar. 15 through Apr. 26, 2014. A reception will be held on Mar. 15, from 6-8pm. A film by Kristi Ryba will begin at 6:30pm with a dance performance by Annex Dance Company to follow. The exhibition includes artworks by Mary Walker, Kristi Ryba, Linda Fantuzzo, and John McWilliams.

The theme of the exhibition is loss: All the pieces will be dedicated to lost mentors, loved ones, and friends. Each person in the group has recently lost an important person in their lives and is enthusiastic about honoring that special person in the *Ode to...* exhibition/performance.

his printing press," says Mark Walker. "I thought that the McClellanville Arts Center would be a wonderful place to have the exhibition. I realized that my series would not fill the space. I thought of other artists whom I have worked with closely, whose work I admire, and who have recently lost someone significant to them. The idea jelled into including four artists, a dance performance and a short animated film."

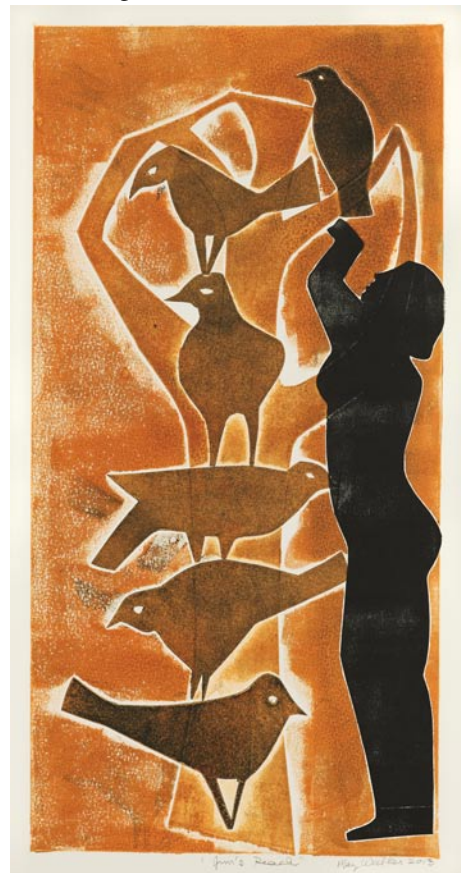


*Ode* - Annex Dance Company, photo by William Long

"The movement vocabulary for Annex Dance Company's *Ode* is my interpretation of Mary Walker's images," says Kristin Alexander, artistic director/choreographer, Annex Dance Company. "Mary often sketches rehearsals, so this was a unique opportunity to reverse the role and have her see her work through my eyes. The shapes in both solo form and how they intersect within the print influenced the choreography and composition of the piece. As the dancers enter and exit the space I imagine people slipping in and out of each other's lives, and we are left with just one who has been imprinted by the others."

"Loss, the theme of the exhibit, *Ode to...* is a common thread throughout my work as I use memory as my resource to explore and reveal my ideas about grief, longing, humor and nostalgia, about home, family, motherhood and gender roles," says Kristi Ryba. "The questions I ask myself are, How do we make sense of a life, our parents and now ourselves, as we age and physically decline? How did our childhood and family of origin shape our choices? Inspired by vintage photographs from my birth family

continued on Page 10



*Jim's Reach* by Mary Walker, photo by David Edwards

"A year ago, I decided to do a print series *Ode to Jim* dedicated to my friend (Jim Innes) who on his deathbed left me Page 10 - Carolina Arts, March 2014

# SCALA Surrealist Painter



"Scent"

Juries Choice: Grand Prize  
Art Buzz, The 2014 Collection

[www.peterscala.com](http://www.peterscala.com)  
Studio: 843-225-3313

## Alfred Eaker Paintings Your Choice \$99.



*Mother and Daughter Shopping*  
Oil on Canvas, 24 x 36 inches



*When the Roll is Called*  
Oil on Canvas, 30 x 36 inches

**Alfred Eaker and His Women.** He painted them doing ordinary things. He paid tribute to his evangelical mother who wore a brown dress as she handled snakes in a rural Indiana church. He showed his devotion to the Madonna, depicted in a very voluptuous manner. His wife, Whitney, is identifiable because of her orange hair. And then there are the women we posted on our website under *Alfred Eaker, Adult Content*. Are those women really women? A wonderful opportunity to have a house full of art for the price of one painting.



Artistic Spirit Gallery is located at 10 Storehouse Row in the Naval Base. Open by Appointment. We sell original art created by those who are driven to produce as a form of self-expression.

843-579-0149

[info@artisticspiritgallery.com](mailto:info@artisticspiritgallery.com) • [www.artisticspiritgallery.com](http://www.artisticspiritgallery.com)