

Mooresville Artist Guild

continued from Page 18

collecting items for the enhancement of future art and collages.

The Paint Out is Saturday, Apr. 2, 2011 and is open to all artists, all mediums and all skill levels. Artists will be required to check in between the hours of 9am - 10am at the Depot Fine Arts Center, 103 W Center Ave, at the Old Train Depot, corner

of Main & Center in Downtown Mooresville, NC. All supports (canvas, papers, etc.) will be validated. Registration is \$15 per Artist.

For further information check our NC Institutional Gallery listings, call the Guild at 704/663-6661 or visit (www.MAGart.org).

Rail Walk Studios & Gallery in Salisbury, NC, Offer a Look at the Square Shape



Work by Annette Ragone Hall

Rail Walk Studios & Gallery in Salisbury, NC, will present the exhibit, *It's Hip*

to be Square, on view from Apr. 2 through May 28, 2011. A reception will be held on Apr. 2, from 5-7pm. Refreshments will be served and the public is invited to have some fun and join the artists in dressing "square."

Participating artists for this show are Sharon Forthofer, Karen Frazer, Annette Ragone Hall, Patt Legg, and Marietta Foster Smith. The show's focus is paintings on square canvases and other works created in a square format or with a "square" theme.

Rail Walk Studios & Gallery is located at 409 N. Lee Street, in the Railwalk Arts district of Salisbury.

For further information check our NC Commercial Gallery listings, call the gallery at 704/431-8964 or visit (www.railwalkgallery.com).

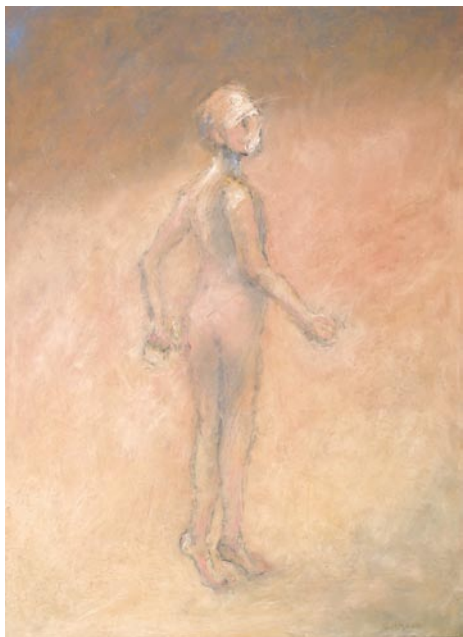
Vista Studios in Columbia, SC, Offer Member Exhibition for Artista Vista

The 13 resident artists of Vista Studios in Columbia, SC, invite the public to view *Prima Vista: Fresh Art at Vista Studios*, which will be on display from Apr. 26 through May 10, 2011. There will be a reception held on Apr. 28, from 5-9pm, during the *Artista Vista* celebration. The artists will have their studios open for you to get a look at their newest work and processes.



Work by Susan Lenz

Fiber artist, Susan Lenz, will present a new art quilt called *Endless Life*, in the ongoing *Grave Rubbing Art Quilt Series*. Constructed from crayon-on-silk grave rubbings made in Lydford, England, the state of Maine and the District of Columbia, the series focuses on a profound sense of time, personal and universal mortality, and the ache of remembrance through passing generations. The work *Genius*, was inspired by just one of dozens upon dozens of donated, mateless socks given for a public art project called "Looking For a Mate", sponsored by the Congaree Vista Guild at River Runner during last autumn's annual *Vista Lights* event. Lenz will also display an installation of tagged keys called *Wall of Keys*, including *The Key to Happiness*, *The Key to Knowledge*, and *The Key to the Future*.



Work by Laurie McIntosh

Non-objective painter, Ethel Brody, continues experimenting with structure and color in her "stripe" series. Taking visual clues from her daily life, she creates colorful, highly organized compositions with strong graphic qualities.

Stephen Chesley continues to offer the results of his dedication to painting. In *Orsman*, he alludes to Walter Inglis Anderson, after his following of Ralph Albert Blakelock and Albert Pinkham Ryder - a notation of the incredible art spirit of all three. In the work, *Trees, Slight Wind*, Chesley experiments with George Inness' application of the Swedenborgian esthetic.

Pat Gilmartin's ceramic sculpture is presented as figurative works in contexts provided by found objects, making for interesting and ambiguous narratives. In *Magic Potion*, for example, two people interact with each other as well as with their own images as seen in a mirror. The meaning of this narrative is left to the viewer to interpret.



Work by David Yaghjian

Sharon Collings Licata, sculptor, will exhibit works using Orange Utah Alabaster. In the work *Hand Aflame*, she creates an abstract where one can see both finger and flame shapes speaking to the color

continued on Page 21

Exquisite handblown glass gallery and studio in the historic downtown vista arts district. Open to the public Mon. thru Sat. Offering unique and affordable blown glass vases, bowls, flowers, indoor and outdoor lighting, zipper bottles, ringholders, sculpture, ornaments and much, much more. Providing quality, uniqueness, and affordability for 20 years!

Ask about our classes!!



One Eared Cow Glass, Inc.
1001 Huger St. Columbia, SC
803-254-2444 www.oneearedcow.com



MOUSE HOUSE, Inc.

2123 Park Street
Columbia, SC 29201
(803) 254-0842

mouse_house@prodigy.net

<http://mousehouseinc.blogspot.com>

Specializing in antiquarian prints, custom mirrors, and the fiber arts of Susan Lenz



MOUSE HOUSE, INC.
FRAMES & ANTIQUARIAN PRINTS