

# City of Charleston SC

continued from Page 5

quaint relic of yore. Davenport's work is rich with narrative threads and trenchant observations of the human condition.

Heyward's dreamscapes contain bits of the familiar, but they are juxtaposed in unfamiliar ways. There is a rightness to the completed images, as if they could be no other way, yet there is also something off-kilter and unsettling. Heyward's works evince a kind of shock to the system, and an invitation to unravel the narrative threads presented. There is a puzzle-like aspect to the series, with each new piece adding clues as to the interpretation of others in the grouping. Figures both float and anchor many of the compositions, emphasizing the fact that humans are surrounded by a landscape of images and impressions brought together by imagination.



Work by Cabell Heyward  
Museum of Women in the Arts.

Cabell Heyward was born in Queens, New York, raised in Richmond, VA, and educated at Georgia Tech and at the University of Georgia where he received his MFA. His teaching experience includes adjunct positions at the University of Georgia, and the University of South Carolina at Beaufort. He is currently teaching at the Lowcountry Montessori School in Beaufort. He divides his time between the loathsome necessities of a politically compromised life and teaching, being a dad, and painting.

City Gallery, located at Joseph P. Riley, Jr. Waterfront Park, is owned by the City of Charleston and operated by the City of Charleston Office of Cultural Affairs, presenting an annual program of exhibitions and events featuring the finest contemporary art from local, regional, national and international artists, with a focus on the Lowcountry. City Gallery provides access to the visual arts for everyone in Charleston, visitors and residents alike, by offering exhibits that are all admission-free.

For further information check our SC Institutional Gallery listings and holiday closures, visit ([www.charleston-sc.gov/citygallery](http://www.charleston-sc.gov/citygallery)) or call 843/958-6484.



Work by Rebecca Davenport

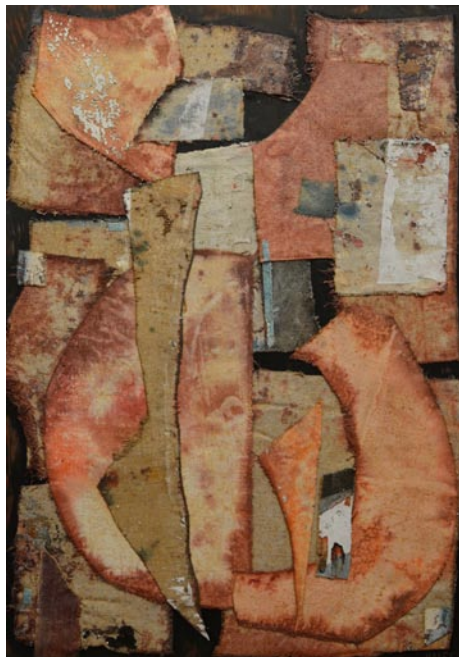
This show is curated and organized by Mark Sloan, Director and Chief Curator of the Halsey Institute of Contemporary Art.

Rebecca Davenport graduated with a BFA from Pratt Institute and an MFA from the University of North Carolina. She has been painting professionally for the past thirty years. Her paintings are in many private and public collections, including the National Museum of American Art, the Corcoran Gallery, and the National

## Ann Long Fine Art in Charleston, SC, Features Works by William Halsey

Ann Long Fine Art in Charleston, SC, will present an exhibit of newly released artworks from the estate of modernist William Halsey (1915 - 1999), a pioneer of modern art in the South, on view from Apr. 7 - 27, 2017.

The show will feature large scale textile collages and abstract paintings in addition to works on paper, showcasing the artist's versatility.



"Maya I" by William Halsey, 1973, 24" x 17" (collage) Textile collage on panel

Born in Charleston, SC, Halsey attended the University of South Carolina for two years, where he met his wife, fellow artist Corrie McCallum, before moving to



"Floating Blues" by William Halsey, 1969, 48" x 56" (collage) Textile collage on panel

Boston to continue his formal art studies at the school of the Museum of Fine Arts. After graduation and over a year in Mexico, Corrie and William returned to Charleston to live and work.

Driven by a passion for color and texture, Halsey's work grew increasingly abstract in time. He was represented during his lifetime by the Bertha Schaefer Gallery in New York City and was included in exhibitions at the Art Institute of Chicago, Pennsylvania Academy of the Fine Arts, Metropolitan Museum of Art, Whitney Museum of American Art, and Museum of Modern Art.

Halsey was a legendary educator and mentor; he founded the Studio Art Department at the College of Charleston. He advanced the visual arts in Charleston from the picturesque tradition.

For more info check our SC Commercial Gallery listings, call 843/577-0447 or visit ([www.annlongfineart.com](http://www.annlongfineart.com)).

# Karen Burnette Garner

~Artist~



Lowcountry Artists Gallery

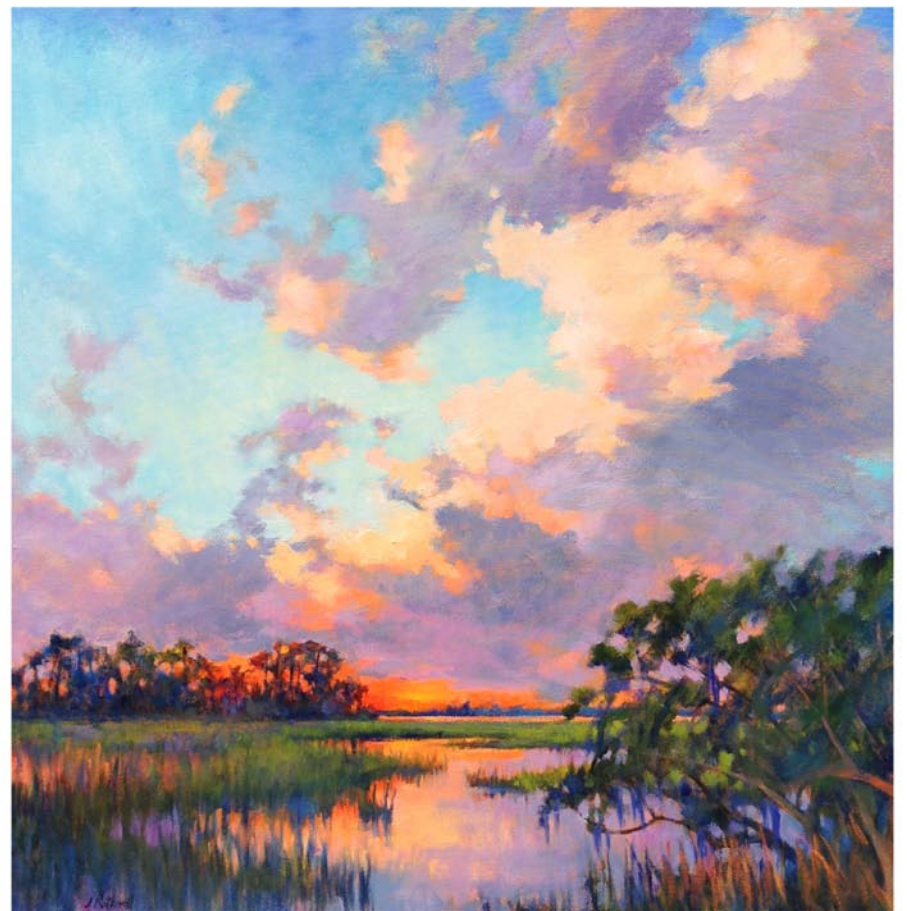
The oldest artist owned gallery in Charleston

148 East Bay St., Charleston, SC 29401  
843.577.9295

Our online gallery is now open!

For the latest news and art, visit [www.karenburnettegarner.com](http://www.karenburnettegarner.com)

# WELLS GALLERY



## JUNKO ONO ROTHWELL

PAINTING LIVE IN THE GALLERY

FRIDAY, APRIL 14

& SATURDAY, APRIL 15

1-5PM



THE SANCTUARY AT KIAWAH ISLAND

1 SANCTUARY BEACH DR, KIAWAH, SC 29455

843.576.1290

[WWW.WELLSGALLERY.COM](http://WWW.WELLSGALLERY.COM)