

# Luna Lee Ray Studio

continued from Page 47

signs and balloons.

For further information contact Mirinda

Kossoff by calling 919/361-5127 or e-mail to (mkossoff@frontier.com).

## The Carrack Modern Art in Durham, NC, Features Smartphone Art Exhibit

The Carrack Modern Art in Durham, NC, is presenting *interface // interference - experience filtered by smartphones*, juried by Smartphone Art Show, on view through May 10, 2014. Receptions will be held on May 2 and May 9, from 7-10pm and an Artist Talk will be offered on May 8, from 7-9pm.

The smartphone is ubiquitous in our culture. And anything that changes us the way our smartphones have, and continue to do, demands artistic attention and exposition. Historically, artists have used tools like the Claude Glass (also referred to as a Black Mirror), Camera Lucida and Camera Obscura to help perceive the world differently through filters, reflections, superimpositions and projections of their surroundings, as a way to inform their artistic process.

The Claude Glass of today is the smartphone, which goes far beyond just filtering and reflecting an artist's perceptions but informing and transforming our experience in reality.

The artwork selected for this show explores our relationships with our smartphones...and our relationships with other humans, when the smartphone acts as our interface or interference with them. We are exposing the smartphone's role in our experience of intimacy, perception, emptiness, comfort, vanity, connection and disconnection, whether positive or negative.

And from this point forward we wonder, how will life with smartphones be different

in a year? or two?

Before, during and after the show, we strongly encourage everyone - artists, participants, observers - to help document their experience with our show using the hashtag #INTERFF. Post a photo of someone hugging Jing Niu's plush iPhone, retweet the truths or lies you tell to Fernanda Duarte, physically tag yourself by wearing an #INTERFF button, post a Vine of Eric Raddatz in the process of creating a new piece for his #selfies series. All of the media generated by this show, using #INTERFF, will be incorporated into a future piece for the next Smartphone Art Show.

Featuring work by: Aaron Kutnick, Ali Halperin, Carlos Alberto Torres, Chance Murray, Eric Juth, Eric Raddatz, Fernanda Duarte, Ginnie Hench, Heather Gordon, James Fatata, Jim Adams, Jing Niu, Libby Lynn, Matt Zigler, Parasol B, Saba Barnard, Sandra Elliott, Sarah Goetz, and Tiny Zombie.

Be sure to visit during one of these events so that you can participate in interactive artworks with the artists themselves. And please click the event links below so that you can easily invite friends.

For further information check our NC Institutional Gallery listings, call the gallery at 704/213-6666 or visit (<http://thecarrack.org>). For up-to-date information please follow the show on Facebook at (<http://facebook.com/SmartphoneArtShow>).

## The Carrack Modern Art in Durham, NC, Features Works by Elsa Hoffman

The Carrack Modern Art in Durham, NC, will present *Buried in Light and Shadow*, an installation style display of metal and wood by Elsa Hoffman, on view from May 16 -24, 2014. A reception will be held on May 16, from 7-10pm and a gallery talk will be given on May 22, beginning at 7pm.

Hoffman is a wood and metal worker based in Chapel Hill, NC. With a handheld plasma cutter, she transforms thin sheets of salvaged metal into 2 and 3-dimensional designs including lights, sculpture and furniture. Using her skills as a trained woodworker, she artfully combines wood and metal, embracing and highlighting the imperfect beauty of the rusted metal and the gestural lines created with the plasma cutter.

Entering *Buried in Light and Shadow* is like entering a tomb. In the center of the darkly lit gallery, a coffin made out of intricately cut metal, glows with light. A flying hawk and running leopard propel the viewer into the space. The illumination of the work casts shadows and light, expanding the pieces beyond their physical dimensions. Hoffman's work, created from scrap sheets of metal and wood, evokes a sense of strength and fragility. The focus of the



Work by Elsa Hoffman

darkened space is not about mourning death but rather the vibrancy of life.

Hoffman grew up in the woods in Efland, NC. She attended Oberlin College 2006-2010 where she earned a double major in studio art and environmental studies. She moved back to the piedmont area four years ago where she has a small farm and works at the White Cross Woodworkers cooperative. She makes a living building custom furniture and metal designs and selling vegetables.

The Carrack Modern Art is a zero commission, community run art space in downtown Durham.

For further information check our NC Institutional Gallery listings, call the gallery at 704/213-6666, or visit (<http://thecarrack.org>).

## City of Cary, NC, Offers PAQA-South's Juried Quilt Exhibition

The City of Cary, NC, with the PAQA-South (Professional Art Quilters Alliance-South) is presenting the *11th International Juried Art Quilt Exhibit - ART-QUILTSwhimsy!*, on view at the Page-Walker Arts & History Center, through June 22, 2014. The exhibit captures the whimsical theme through innovative fine art quilts.

*ART-QUILTSwhimsy!* features 44 quilts created by 37 artists from across the United States and Canada. The art was selected by jurors Bryan Ellis, a design faculty member at UNC-Greensboro and Wake Forest University, and Nancy Cook, a professional art quilter from Charlotte, Page 48 - Carolina Arts, May 2014



Work by Gerrie Congdon

NC. Interpretations of whimsy range from playful humor to fanciful ideas. Viewers will be delighted as they contemplate the fine art quilts and the artistic concept of whimsy.

continued above on next column to the right

**the fifth element**  
may 26 - june 22

pat lloyd  
arianna bara  
pat merriman

opening reception:  
fri may 30 6-9

Pat Lloyd

Arianna Bara

Pat Merriman

HILLSBOROUGH GALLERY of ARTS  
121 N. Churton St.  
Hillsborough, NC  
919-732-5001  
[HillsboroughGallery.com](http://HillsboroughGallery.com)

PAQA-South is a group of professional artists from across the United States who come together to promote innovative fiber and quilting arts. To learn more about PAQA-South, visit ([www.paqa-south.org](http://www.paqa-south.org)). Sample photographs of previous shows and member artists' works are available

on the website.

For further information check our NC Institutional Gallery listings, call 919/460-4963, or visit ([www.townofcary.org](http://www.townofcary.org)) under Parks and Recreation. It is advised to call ahead to find out about viewing hours.

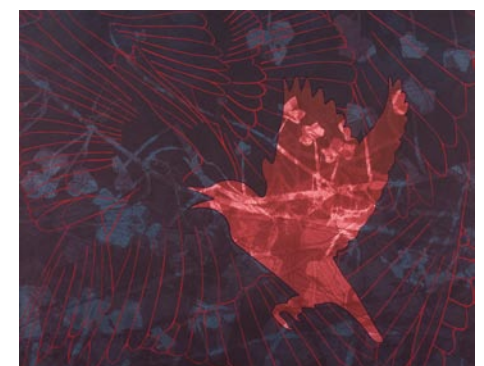
## NC Museum of Natural Sciences in Raleigh Offers Works by April Flanders

The beauty-battle rages on between natives and invasive species in April Flanders' new show *Beyond their Borders* at the NC Museum of Natural Sciences' Nature Art Gallery, from May 2 - 26, 2014. A reception will be held on May 2, from 6-8pm.

Flanders holds a Master's of Fine Arts in printmaking from Arizona State University. She has held numerous solo exhibitions at galleries across the United States and her work has been featured in group shows at museums and galleries nationally and internationally, including the Center for the Book Arts in New York, NY, and the Anna Leonowens Gallery in Nova Scotia, Canada. Her work can be seen in several public collections, including the Scottsdale Museum of Contemporary Art and the Tucson Museum of Art in Tucson, AZ, and the Turchin Center for the Visual Arts in Boone, NC.

Flanders teaches full time at Appalachian State University in Boone, having taught printmaking for 13 years at various universities both nationally and internationally. Her current work addresses the issue of native versus invasive animal and botanical species and highlights a variety of media including printmaking, painting, drawing and installation.

"Relying on the visual language of



Work by April Flanders

seduction, I create work where viewers are confronted by their own attraction to the beauty of an ultimately destructive organism," says Flanders. "Using pattern, repetition, and layered color I seduce the viewer, luring them into a garden of exotics. Chosen for their exotic beauty, non-native species regularly escape their confines. Unfortunately, they often thrive and ultimately take over, becoming invasive, choking out native forest plants and animals and undermining natural ecosystems. The result is a globalized landscape that means an inexorable death for native species."

For further information check our NC Institutional Gallery listings or call the gallery at 919/707-9854.

Don't see anything here about your exhibit or art space?

Did you send us your information?

The deadline each month to submit articles, photos and ads is the 24th of the month prior to the next issue. This will be May 24th for the June 2014 issue and June 24 for the

July 2014 issue. After that, it's too late unless your exhibit runs into the next month. But don't wait for the last minute - send your info now.

E-mail to ([info@carolinarts.com](mailto:info@carolinarts.com)).