

Francis Marion University in Florence, SC, Offers Works by Stephanie Imbeau

Francis Marion University in Florence, SC, will present *Connections - Recent Work* by Stephanie Imbeau, on view in the Hyman Fine Arts Center Gallery, from May 17 through Aug. 11, 2016.

Florence native Stephanie Imbeau's exhibition includes fiber art, ceramics, and a unique onsite installation of a structure made of umbrellas. Her practice investigates the way individuals seek community, personal security and a place to belong. She uses representations of protective structures as anthropomorphisms to explore this universal human impulse.

These basic forms of shelter also provide the framework for a conceptual mapping of the barriers drawn to create safety and claim meaning using physical spaces. The simple outline of a house, for example, is both a boundary and a claim, "I am here" – with walls and a roof.

Imbeau uses a variety of mediums with a specific interest in materials that possess the opposing qualities of utility and fragility, such as clay, cardboard and umbrellas.

Imbeau received a BFA from The Ohio State University in 2004 and MFA from Newcastle University in 2007. Her



Work by Stephanie Imbeau

competition-winning work *Shelter* made her the first female artist to adapt *Channel 4's Big 4* in London in 2009. She was the youngest artist in the show *Homeland [In]Security: Vanishing Dreams* at Dorsky Gallery, Long Island City, NY, in November 2014. She has exhibited in Germany, France, England, Greece, and various locations in the US and has been featured in print in the UK and Korea. She currently lives and works in Williamsburg, Brooklyn.

For further information check our SC Institutional Gallery listings, call the gallery at 843/661-1385 or visit (<http://departments.fmarion.edu/finearts/gallery.htm>).

Artspace 506 in North Myrtle Beach, SC, Offers Works by Gaston Locklear

Artspace 506 in North Myrtle Beach, SC, will present *Passages*, a solo show of works by Gaston Locklear, on view from May 5 through July 2, 2016. A reception will be held on May 5, from 5-8pm.

Locklear is a long-time resident of Murrell's Inlet, SC, where he began his artistic pursuits as a teenager. As a young person and surfer he worked for years at Village Surf Shop in Garden City Beach where he would create designs for Kelly Richards' iconic Perfection Surfboards. It was during a trip to New York City, and an encounter with a painting of a tree by Egon Schiele, that he had an epiphany of sorts and began to devote his energies to art in a more serious way.

The works included in this show have been created over the course of the last decade. They highlight Locklear's interest in the way in which painting, combined with objects and raw materials, can be used to explore the impact of time on our understanding of ourselves and the world around us. Using a variety of techniques including thick and thin painting, and multi-media assemblage, Locklear has developed an artistic style that explores new conceptual processes through which to view the world as he sees it.



Work by Gaston Locklear

Locklear has said his goal, "is to create art that has a strong physical and emotional presence by incorporating found materials into the work. Weathered plywood, rusted sheets of tin, roofing tar, or any material that has already 'served its purpose' can be found in the works. The organic textures, shapes and colors formed over time on the varying materials gives the artwork a human quality that connects with the viewer."

Artspace 506 is located on 37th Avenue, South, in North Myrtle Beach.

For further information check our SC Commercial Gallery listings, call the gallery at 843/273-0399 or visit (www.artspace506.com).

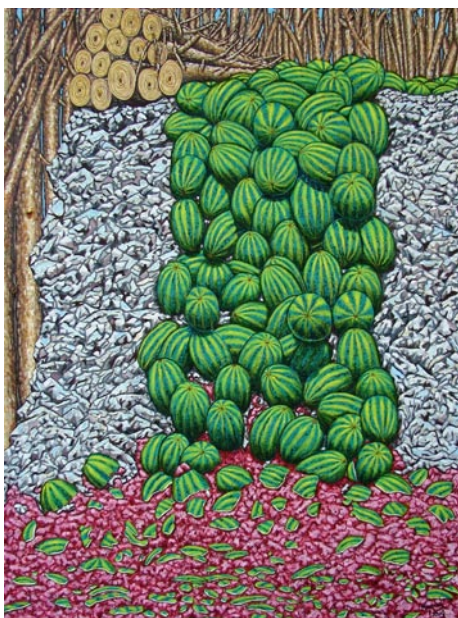
Burroughs-Chapin Art Museum in Myrtle Beach, SC, Offers Guild Show

The Franklin G. Burroughs - Simeon B. Chapin Art Museum in Myrtle Beach, SC, is presenting the *19th Annual Waccamaw Arts & Crafts Guild Juried Exhibition*, on view through May 26, 2016

Over forty artists from around the region will vie for top honors and over \$2000 in cash prizes

Seventy-five two-dimensional and three-dimensional works were selected for jurying. Works selected for display include oil, watercolor and mixed media paintings; photographs; and an array of craft items, such as batiks and other fiber arts. With creations from artists throughout the Carolinas, the show is a perennially popular event with locals and visitors. A large percentage of the works on display will also be available for purchase.

Judge and juror for this year's competition is Jim Arendt, professional artist and Assistant Professor and Gallery Director at Coastal Carolina University. Arendt's work has been exhibited internationally and was recently featured in the Museum's 2015 exhibition *Indigo: Works in Denim* by Jim Arendt. He is regionally renowned for winning the \$50,000 top prize at the first Art Fields© (Lake City, Page 24 - Carolina Arts, May 2016

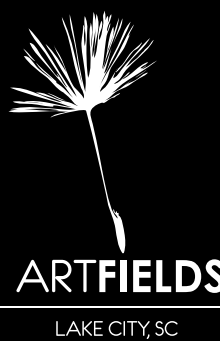


Michael Craig Smith, "Watermelon Waterfall", 2014, oil, 40" x 30," Rebecca R. Bryan Best in Show Award 2015, "WACG 18th Annual Juried Art Exhibition".

SC) juried art competition in 2013.

Cash awards to be given include the \$800 Rebecca R. Bryan Best in Show

continued on Page 25



ArtFields would like to thank everyone from our volunteers and vendors to artists and attendees for another incredible ArtFields competition and festival. Congratulations to all of our 2016 prize winners who collectively took home over \$100,000 in cash prizes and solo exhibition awards. Stay tuned for our ArtFields 2017 call for submissions this fall!

Check out all of our year-round programming at ArtFieldsSC.org.

Don't forget about our website:

www.carolinaarts.com



You can find [past issues](#) all the way back to August 2004!

You can find [past articles](#) all the way back to June 1999

Also don't forget about our two blogs:

[Carolina Arts Unleashed](#)

[Carolina Arts News](#)

Send us your email address to be added to our list to receive notice of each monthly issue.

info@carolinaarts.com