

NC Commercial Galleries

continued from Page 65

10am-6pm; Fri.&Sat., 10am-8pm; and Sun., 1-5pm. Contact: 336/274-2212 or at (www.onlyjustbe.com).

Greenville

City Art Gallery, 511 Red Banks Road, Greenville. **Ongoing** - The gallery features the works of established regional and national artists and craftspeople. The gallery offers an extensive collection of paintings, sculpture, ceramics, glass, drawings and photography. Hours: Mon.-Fri., 10am-6pm & Sat., 10am-4pm or by appt. Contact: 252/353-7000 or at (www.CityArtGreenville.com).

Strickland Art Gallery, 817 Dickinson Ave., Greenville. **Ongoing** - The gallery specializes in art by North Carolina artists including Francis Speight, Sarah Blakeslee, Hobson Pittman and Claude Howell. Contemporary NC artists are also shown. Hours: Mon.-Tue., 10am-6pm and by appt. Contact: Barbour Strickland 252/561-7980 or at (www.StricklandArtGallery.com).

Uptown Art Supply & Gallery, a division of UBE, 529 S Evans Street, Greenville. **Ongoing** - Featuring works in a variety of media by local and regional artists. Hours: Mon.-Fri., 9am-6pm and Sat., 10am-5pm. Contact: 252/752-0688 or at (www.uptownart.net).

Hendersonville - Flat Rock

Throughout Hendersonville/Flat Rock, Every 3rd Fri. of the month, 5-8pm - "Art Gallery Trail WNC Hendersonville/Flat Rock Gallery Hop," featuring a tour of local galleries and art spaces, held May - Dec. For further info e-mail to (artgallerytrailwnc1@gmail.com).

Art MoB Studios & Marketplace, 124 4th Avenue East, Downtown Hendersonville just off of Main Street, Hendersonville. **Ongoing** - Art MoB now represents over 90 local artists and has been proudly open for three years, and counting. Art MoB also features 5,000 square feet of space including four studios with wonderful resident artists. These artists can be found fast at work in their studios most days of the week. We invite you to come and join us... see our work, meet our artists, and take classes with us. Hours: Mon.-Sat., 10am-5pm & Sun., 1-4:30pm. Contact: 828/693-4545 or at (www.artmobstudios.com).

Carolina Mountain Artists, 444 N. Main Street, Hendersonville. **Ongoing** - Featuring works by regional and local artists in every media. Hours: Mon.-Sat., 10am-6pm & Sun., 1-5pm. Contact: 828/696-0707.

Custom Built Quilts, 411 N. Wall Street, Hendersonville. **Ongoing** - Custom built quilts from aprons to wall hangings. Hours: open on weekends - call ahead to be sure. Contact: 828/808-1567 or at (www.custombuiltquilts.com).

East End Gallery on 7th Avenue, 518 7th Avenue East, Hendersonville. **Ongoing** - Featuring a unique collection of fine art and craft. Hours: Thur.-Sat., 11am-5pm. Contact: 828/551-3278 or at (www.eastendgallery7.com).

Firefly Craft Gallery, 2689-D Greenville Highway, Flat Rock. **Ongoing** - Featuring fine craft and art - all the little things that make living beautiful. Hours: Tue.-Sat., 10am-5pm. Contact: 828/231-0764 or at (www.fireflycraft-gallery.com).

Framing Arts, 119 3rd Avenue West, Hendersonville. **Ongoing** - Framing Arts will elegantly frame all your artwork to fit your decor and budget. Using preservation techniques and archival materials, your art will be protected for a lifetime of enjoyment. Hours: Mon.-Fri., 9:30am-5:30pm & Sat., 10am-5pm. Contact: 828/696-3818 or at (www.framingarts.net).

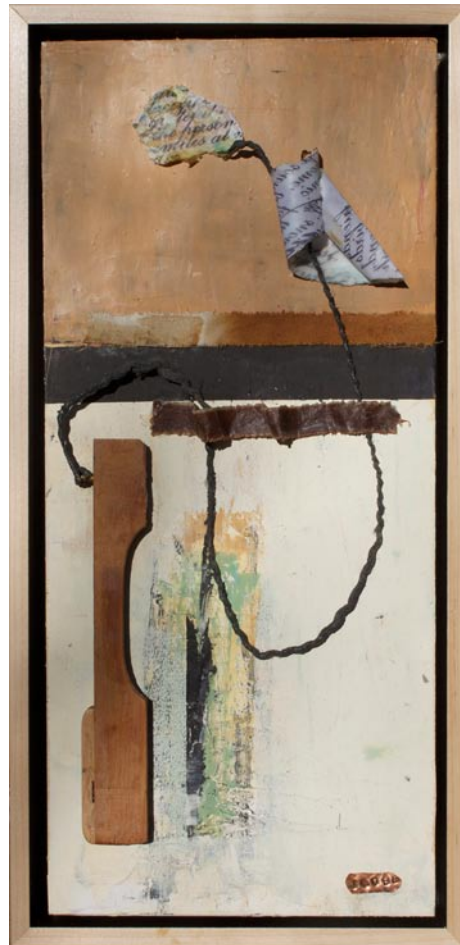
McCarter Gallery, 451 N. Main St., Hendersonville. **Ongoing** - Featuring the working studio-gallery of landscape artist Alan McCarter, specializing in his acrylic paintings of the beauty of Nature in the Blue Ridge and Great Smoky Mountains. Also, featuring a display of new works monthly. And, watercolors and acrylics of Robbin McCarter and art glass by Czech glass master Igor Muller and Canadian Robert Held. Hours Mon.-Sat., 10:30am-5:30pm & by appt. Contact: 828/698-7117 or at (www.mccarter-gallery.com).

Narnia Studios, 315 N. Main St., Hendersonville. **Ongoing** - Featuring works by local and regional artists in a variety of media. Hours: Mon.-Sat., 9:30am-6pm. Contact: 828/697-6393 or at (www.narniastudios.com).

Page 66 - Carolina Arts, May 2017

www.enogallery.net/.

Hillsborough Artists Cooperative and The Skylight Gallery, 102 West King Street, upstairs over Antonia's Restaurant, Hillsborough. **Ongoing** - Founded in 1992, featuring works by Jayne Bomberg and Tom Guthrie (The Studio of Collective Effervescence); Jennifer E. Miller, Andrea DeGette, Jacquelin Liggins, and Tiffney Marley. Hours: last Fri. of the month from 6-9pm or by appt. Contact: 919/929-2691 or 919/644-8637.



Work by Jude Lobe

Hillsborough Gallery of Arts, 121 N. Churton St., Suite 1-D, Hillsborough. **Through May 21** - "Parallel Play," featuring paintings by Ellie Reinhold, sculpture by Jason Smith, and pottery by Evelyn Ward. **May 22 - June 25** - "Earthworks," featuring paintings by Chris Graebner and Jude Lobe, and pottery by Garry Childs. A reception will be held on May 26, from 6-9pm. **Ongoing** - Founded in 2006, the Hillsborough Gallery of Arts is owned & operated by 21 artists and features painting, sculpture, photography, glass art, jewelry, wood, pottery & fiber art. Hours: 10am-6pm, Mon.-Thur.; 10am-8pm, Fri. & Sat.; and noon-4pm, Sun. Contact: 919/732-5001 or at (www.HillsboroughGallery.com).

Sovero Art Gallery & Studio, 121 North Churton Street, Suite 2-B, Hillsborough. **Ongoing** - Featuring jewelry and oil paintings by Peruvian artist David Sovero, who was born in 1971 in Lima, Peru. He graduated from the Peruvian National Arts College where he attended from 1990 -1996. He has a strong academic foundation. His Incan ancestral roots are saturated with thousands of years of Andean stylized figures. Hours: Mon.-Sat., 10am-7pm. Contact: 919/619-5616 or at (<http://soveroart.com/>).

Lenoir

Morning Song Gallery, at old Victorian house, 512 West Avenue, NW, across from the Lenoir Post Office and to the right of Baker Realty, Lenoir. **Ongoing** - Featuring works by local and regional artists. Hours: Call ahead. Contact: Margaret Carter Martine at 828/754-5693.

Lexington

The Bob Timberlake Gallery, 1714 E. Center Street Extension, Lexington. **Ongoing** - Featuring original artwork and reproductions by Bob Timberlake. Also furniture, gifts, apparel and collectibles. Hours: Mon.-Sat., 10am-5pm. Contact: 800-244-0095 or at (www.bobtimberlake.com).

Lincolnton

Gallery 27, 808 W. Hwy. 27, Lincolnton, NC. **May 20 - June 7** - "Gallery 27's Fifth Anniversary Show," featuring works by Liz McKay and Stacey Pilkington-Smith. A reception will be held on May 20, from 7-9pm. The multi-faceted realm of mixed media is showcased in an explosion of color and texture by artists Liz McKay and Stacey Pilkington-Smith in celebration of Gallery 27's fifth anniversary. Pilkington-Smith, owner of Gallery 27, and McKay, the gallery manager, have combined their current works in a show that visually represents the inception, nurturing and ultimate fruition of following an artistic dream. **Ongoing** - The gallery is the area's only working art gallery specializing in representing new and emerging artists. We also represents established artists. The space houses a formal fine art gallery, gift

shop, and large classroom area. Hours: Wed.-Fri., 11am-6pm, and Sat., 9am-2pm. Contact: 704/240-9060 or at (www.ncgallery27.com).

Linville/Linville Falls Area

Anvil Arts Studio & Sculpture Gardens, Hwy. 221, Linville Falls. **Ongoing** - While in Linville Falls, be sure to come by and stroll through the gallery, studio, and sculpture gardens of artist Bill Brown. His works include contemporary sculpture, sculptural lighting, and paintings. You'll be drawn into each piece of art as it appeals to your understanding from a myriad of materials including steel, copper, bronze, and various patinas. Hours: Mon.-Fri., 9am-5pm should call ahead at 828-765-6226 or at (www.studiosculpture.com).

87 Ruffin Street Gallery, located next to the Old Hampton General Store and Barbeque, Hwy. 221 in Linville. **Ongoing** - The gallery features the work of local and regional folk artists, potters, figural wood carvers, glass artists and painters. This unique gallery also carries beautiful furniture handcrafted by local artists from local woods. The gallery has its own framing shop for all your picture framing needs. Whether you are looking for original artwork for your home or for a gift Ruffin Street gallery is the perfect destination. Hours: Mon.-Sat., 10am-5pm & Sun., 11am-5pm. Contact: 828/737-0420 or at (www.ruffinstreetart-gallery.com).

Mars Hill

Tom Turner Porcelain, 381 Turner Lane, Mars Hill. **Ongoing** - Featuring wheel thrown and high fired porcelain art pottery by Tom Turner with classical glazes like copper red oxblood, oilspot, celadons, and ash glazes. Hours: by appt. Contact: 828/689-9430 or at (www.tomturnerporcelain.com).

Marshall

East Fork Pottery, 268 Ras Grooms Road, Marshall. **Ongoing** - East Fork Pottery was founded in 2010 by Alexander Matisse. We make a full range of functional and sculptural ceramics, fired in a large wood bruning kiln. Striving to understand our place in the tapestry of American ceramics, we hold the past, present, and future on equal ground, for the three in concert make the most beautiful chord. Hours: by appointment. Contact: 828/689-4109 or at (www.eastforkpottery.com).

Firewalker Gallery, Main St., across from the Madison County courthouse, Marshall. **Ongoing** - The gallery features artists from Madison County and east Tenn. who work in a variety of mediums. Hours: Thur., Fri. & Sat., 10am-6pm and by appt. Contact: 828/649-0134 or at (www.firewalkergallery.com).

Mebane

Fine Art Carolina Gallery, 116 West Clay St., Mebane. **Ongoing** - The gallery offers traditional and contemporary art in various mediums. The gallery will also feature guest artists and offer art workshops. Hours: Mon.-Sat., 11am-5pm. Contact: 919/455-5965 or at (<http://FineArtCarolina.com>).

Micaville

Crabtree Creek Art and Floral Gallery, 4161 E. Hwy 19-E, between Burnsville & Spruce Pine, in Micaville. **Ongoing** - A 2,400 sq. ft. gallery offering pottery, blown glass, paintings, stained glass, wood carvings and bowls, jewelry, handmade handbags, sweaters & hats, Christmas trees, ornaments and holiday decorations, metal sculptures and ironwork, handmade soaps and lotions, fragrances and candles, wildlife & floral photography, home accessories, lamps, handmade tables, chairs and home accents, silk floral creations and fresh floral arrangements, textile pieces, handmade baskets and local crafts from the western North Carolina region. Also a complete garden center with blooming plants, hanging baskets, dish and herb gardens is located on property including landscape art, hardscape and fountains. Hours: Tue.-Sat., 10am-5pm. Contact: 828/675-0612 or at (www.crabtreecreekgallery.com).

Crimson Laurel Gallery, inside Appalachian Terroir, 621 Micaville Loop, Micaville. **Ongoing** - Appalachian Terroir is comprised of three divisions: Crimson Laurel Gallery, a studio ceramics retailer; Smoky Mountain Pottery Studio, a ceramics manufacturer; and Appalachian Terroir, designer and producer of original dinnerware and housewares. Hours: Mon.-Fri., 8am-5pm & Sat., 10am-6pm. Contact: call Ben Philips at 904/716-3116 or e-mail to (contact@crimsonlaurelgallery.com).

continued on Page 67