

SC Commercial Galleries

continued from Page 37

Karen Newgard, Mark Peters, Ron Philbeck, Virginia Scotchie, Gay Smith, David Stempfle, Ben Truesdale and Mike Vatalaro. Hours: Tue.-Fri., 11am-6pm & Sat., 10am-6pm. Contact 803/251-3001 or at (<http://southern-pottery.com/>).

The Gallery at DuPRE, 807 Gervais St., DuPRE Building, in the Vista, Columbia. **Ongoing** - Featuring works by artists who are impacting the state and beyond artists who are impacting the state and beyond, in a variety of media. Hours: Mon.-Fri., 9am-6pm or by appt. Contact: Gallery Curator, Byers Greer at 803/546-1143 or at (www.dupregallery.com).

The Gallery at Nonnah's, 928 Gervais Street, Columbia. **Ongoing** - Featuring works by Edie Biddle, Ingrid Carson, Gail Cunningham, Jan Fleetwood, Bonnie Goldberg, Alicia Leek, Betsy Mandell, Donna Rozier, and Betsy Stevenson, in various media. Hours: Lunch: M.-F., 11:30am-2pm; Evenings: M.-Th., 5-11pm; F., 5pm-12:30am; Sat., 6pm-12:30am. Contact: 803/779-9599 or at (www.nonnahs.com).

The Great Frame Up, 252-M Harbison Blvd., Columbia. **Ongoing** - Original works by Edie Biddle and Suzanne Amodio. Variety of work by local and regional artists. Giclee and serigraph reproductions on paper and canvas from some of the world's most collectible artists. Dealer for Somerset House Publishing, Gregory Editions / Washington Green Fine Art, Historical Art Prints and others. Specialists in custom framing. Hours: Mon.-Sat., 10am-7pm. Contact: 803/407-2156 or at (www.columbiasc.thegreatframeup.com).

The Hive Studio and Gallery, 3310 Harrison Rd., across from Zesto just off Forest Dr., near Richland Fashion Mall, Columbia. **Ongoing** - Featuring exuberant watercolors by Betty Rivers; soft and emotional mixed media by Martha M. T. Herman; spirited equestrian photography by Tina W. Brown; sculpture by Jessica Barnes Smith, Elizabeth M. Barnes and Darlene Doerr; ceramics by Sonya Wilkins and Janice Sczeszy. Also, offering classes ages 5-adult in a variety of mediums. Hours: Tue.-Fri., 1pm-6pm and by appt. Contact: 803/467-4112 or at (<http://home.sc.rr.com/hivestudio/>).

Village Artists, Village at Sandhill, 631-8 Promenade Place, next door to Panera, off Two Notch and Clemson Rds., near I-20, Columbia. **Ongoing** - The gallery features the works of 28 local artists offering: workshops, monthly shows and exhibits. Hours: Mon.-Sat., 10am-9pm & Sun., noon-6pm. Contact: 803/699-8886.

Vista Art & Frame, 1752 Airport Blvd., Cayce. **Ongoing** - Featuring paintings of the South by Stephen O. Gunter. Hours: M.-Thur., 10am-6pm; Fri., 10am-4pm; & Sat., 10am-2pm. Contact: 803/794-7252 or at (www.vistaart.com).

Vista Studios - Gallery 80808, 808 Lady Street, Columbia. **Ongoing** - Featuring exhibits by artists of the Vista Studios and occasional guest exhibitions. Vista Studio artists: Ethel Brody, Stephen Chesley, Jeff Donovan, Heidi Darr-Hope, Pat Gilmartin, Robert Kennedy, Susan Lenz, Sharon C. Licata, Laurie McIntosh, Michel McNinch, Kirkland Smith, Laura Spong, and David Yaghjian. Hours: Mon.-Fri., 11am-3pm, Sat.&Sun., 1-4pm or by appt. Contact: 803/252-6134 or at (www.vistastudios80808.com).

Webb Rawls Galleries, 5210 N. Trenholm Rd., (Forest Acres, behind First Citizens Bank) Columbia. **Ongoing** - Featuring fine art and picture framing since 1904. South Carolina's oldest family owned art and frame gallery. Local art, museum framing of fine art at lowest prices. Hours: Mon.-Fri., 10am-5:30pm & Sat., 10am-3:30pm. Contact: 803/787-2787 or at (www.webbrawls galleries.com).

Wink Gallery, 911-A Lady St., Columbia. **Ongoing** - Featuring a wide range of contemporary art by Midlands artists, including Terri Hutto, Laurie McIntosh, Page Morris, Heather LaHaise, Debbie Martin and Melony Stuckey. Hours: Mon.-Fri., 10am-5pm; Sat., 10am-3pm and by appt. Contact: 803/238-3855.

ALTERNATE ART SPACES - Columbia **Frame of Mind**, 1520 Main St., across from the Columbia Museum of Art, Columbia. **Ongoing** - The FOM Series is a monthly art exhibition dedicated to supporting and featuring both up-and-coming and established local South Carolina artists. Hours: Mon., 10am-2pm & Tue.-Fri., 10am-6pm. Contact: 803/988-1065 or e-mail at (frameofmind@sc.rr.com).

Conway

Throughout Historic Downtown Conway, 1st Sat. of each month - Featuring an Art Walk where the many galleries have special exhibits, live music, wine and light refreshments. Hours: 10am-5pm. Contact: call any of the galleries listed below.

Pop's Glass Station and Conway Glass Gallery, 2416 Main St., (just 500 yards from Conway Feed and Grain and .2 miles from the Post Office) Conway. **Ongoing** - Pop's is an open-air gallery and glass educational studio dedicated to raising the awareness of the visual arts in Conway and Horry County, SC. Hours: Tue.-Sat., 10am-4pm. Contact: 843/248-4527, 843/248-3558, or at (www.popsglass.com).

Darlington

The Chameleon Art Gallery, 26 Public Square, Darlington. **Ongoing** - Featuring some of the finest artwork in the southeast. Hours: Tue.-Fri., 10am-5:30pm & Sat., 1-4pm. Contact: 843/393-6611 or at (www.chameleon-gallery.com).

Denmark

Jim Harrison Gallery, One South Main Street, intersection of Main Street and Highway 78, Denmark. **Ongoing** - Featuring works by Jim Harrison including original paintings, limited edition prints and a variety of unlimited edition reproductions, bronzes, etchings and other collectible items from Harrison in his more than thirty-year career as an artist. Hours: Tue., Thur., & Fri., 11am-5pm and Wed. & Sat., 11am-3pm. Contact: 803/793-5796 or at (www.jimharrison.com).

Edgefield

Jane Bess Pottery LLC, 206 Lynch St., just off of Main St., around the corner from Glass Images, Edgefield. **Ongoing** - Functional stoneware pottery by artist/owner, Jane Bess. Working pottery studio and retail shop featuring many one-of-a-kind items....wonderful entertaining pieces. Hours: Mon.-Fri., 10am-5pm; Sat., 10am-2pm; or by appt. Contact: 803/637-2434 or at (www.janebesspottery.com).

Edisto Island

With These Hands Gallery, 1444 Hwy. 174, next to the Old Post Office Restaurant, Edisto Island. **Ongoing** - The gallery offers a collection of unique handmade, one-of-a-kind, American craft. Representing over 150 artists, you will find: kaleidoscopes, wind chimes, jewelry, hand blown glass, stained glass, pottery, oil lamps, wooden toys, wooden sculptures & decoys, metal sculpture, fiber to wear, photography, original paintings, giclee's, prints, and more! Hours: Tue.-Sat., 10am-5pm. Contact: 843/869-3509 or at (www.WithTheseHandsGallery.com).

Florence

Lynda English Gallery-Studio, 403 Second Loop Rd., Florence. **Ongoing** - Featuring works by local and regional artists in a variety of media. Hours: Mon.-Fri., noon-5pm and by appt. Contact: 843/673-9144 or at (<http://www.lyndaenglishstudio.net>).

Running Horse Gallery (Feather Pottery & Interiors, LLC) 928 Old Wallace Gregg Road, Florence. **Ongoing** - Featuring ceramic works by Sasha and Tari Federer. Their artwork is one-of-a-kind, hand crafted, using an array of firing techniques and surface decoration. Hours: 10am-6pm daily, but call first. Contact: 843/992-2178 or e-mail at (featherpottery@earthlink.net).

Georgetown

Prince George Framing Co., 805 Front St., Georgetown. **Ongoing** - Featuring superior custom framing, a broad selection of quality prints and posters and great customer service. Hours: Mon.-Fri., 10am-5pm & Sat., 10am-2pm. Contact: 843/527-8413 or at (<http://www.princegeorgeframing.com/>).

The Georgetown Art Gallery, 705 Front Street, Georgetown. **Ongoing** - Original works and prints by 20 artists, including: Mimi Beaver, Ann Boone, Mike Bowers, Agnes Boyle, Nancy Bracken, Barbara Bush, Dottie Dixon, Susan Duke, Phyllis Graham, Dian Hammett, Mark Hilliard, Gail Joley, Audrey McLeod, Myrna McMahon, Hal Moore, Drummond Murdoch, Sue Rutherford,

Roy & Carol Smith, Susan Tiller and Nancy van Buren. Hours: Mon.-Sat., 10am-5pm. Contact: 843/527-7711 or at (<http://www.georgetownartgallery-sc.com/index.html>).

Greenville Area

Downtown Greenville - "First Fridays," featuring a gallery crawl presented on the first Fri, of the month from 6-9pm. Visit galleries throughout the downtown area. For info: (www.fristfridaysonline.com).

Art Crossing at River Place, 300 River Street, @ S. Main, along the Reedy River, Greenville. **Ongoing** - This site includes 18 artists studios including: Studio 101, Guy and Cate Stevens Art Studio, 864/915-8918 or (www.GuyStevensArt.com). Studio 103, Larry Seymour Wildlife Art, 864/430-8863 or (www.larryseymourwildlifeart.com). Studio 104, ak DESIGN, LLC., 864/313-1587 or (www.alkeiser.com). Studio 105, Skylark Studio, Cheryl Combs, 864/240-9272 or (www.cherylcombs.com). Studio 106, Patrick Collard Studios, 864/430-8924, or (www.collardphoto.com). Studio 107, The Jared Collection, 864/304-5124 or (www.thejaredcollection.com). Studio 109, Marie Gruber Photography & Mixed Media, 864/918-2619 or (www.MarieGruber.com). Studio 110, Christina Nicole Studios, 864/609-7057, (www.christina-nicole.com). Studio 111, Emily Clarke Studio, 864/704-9988 or (www.EmilyClarkeStudio.com). Studio 112, Susanne Vernon Mosaic Artist, 412/953-5652 or (www.susannevernon.com) and August Vernon Artist, 412/953-3036 or (www.augustvernon.com). Studio 201-1, Ron Gillen, 864/918-3341 or (www.rongillennearts.com). Studio 201-2, Patti Rishforth, 864/350-5123 or (www.pattirishforth.com). Studio 201-3, Erin Cramer, 304/906-8813 or (<http://erinramer.com>). Studio 201-7, Suzanne Day, 864/569-7810 or (www.suzannedaymfa.com). Hours: Tue.-Sat., 11am-5pm or at (www.artcrossing.org).

Art & Light, a fusion gallery, located in the Flatiron Studios of the Pendleton Street Art District, 1211 Pendleton St., Greenville. **Ongoing** - The gallery brings together visual arts and home accessories to provide a boutique that is at once unique and incredibly usable. This is the first fusion gallery in the area to offer varied and affordable original art along with wonderfully original home furnishings and accessories. First-time visitors to the gallery are wowed by the open, welcoming, and glassy - yet warm - studios, which afford a view of the burgeoning arts district that is West Greenville. Hours: Thur.-Sat., 10am-5pm and 1st Fri., 6-9pm of each month. Contact: 864/363-8172 or at (www.artandlightgallery.com).

Artistry Workshops and Studios, 12 Andrews Street, Greenville. **July 1 - 30** - "The Best of the Upstate's Clay Artists", featuring a juried show judged by Bob Chance, Art Professor Furman University. A reception will be held on July 1, from 6-9pm. The exhibit is being presented by Upstate Visual Arts. Works will be judged in five categories: hand-built, wheel-thrown, sculptural, functional, and surface treatment. Hours: . Contact: 864/236-1371 or at (www.theartistry-gallery.com).



Work by Brian Kelley

Artists Guild Gallery of Greenville, 200 N. Main Street, Greenville. **July 1 - 31** - "Polaroid Transfers," featuring works by our guest artist, Brian Kelley. Come see Kelley's unique point of view on these Polaroid images. All the photos are transferred onto silk, giving the piece a delicate texture. Even the color palette is unique with them having an old time feel to them. **Ongoing** - Featuring works by the AGGG members and their eclectic mix of works; Dottie Blair, Nancy Barry, Laura Buxo, Gerda Bowman, Pat Cato, Robert Decket, Kathy DuBose, Alice Flannigan, Chris Madison, Edith McBee Hardaway, Chris Hartwick, Kevin Henderson, Randi Johns, Pegi Newton, John Pendarvis, David Waldrop, and Edward Valenti. Consignors include: John Auger, Don & Sharon Boyett, Kathryn W. Copley, Jennifer Henderson, Lou Koppel, and Sturat Lyle. Hours: Mon.-Thurs., 10am-6pm; Fri., 10am-9pm; Sat., 10am-6pm; and Sun., 1-5pm. Contact: 864/239-3882 or at (www.artistsguildgalleryofgreenville.com).

Catherine Hayes Art + Sculpture - Gallery, 117 + 121 Cleveland St., Greenville. **Ongoing** - Specializing in American and European Fine Art, representing an array of accomplished artists with varying styles. Catherine Hayes also offers art consultant and art leasing services by appointment. The discussion series, "ART Talk," is typically free and held at the gallery every third Monday of the month from 7-9pm. Hours: Tue.-Fri., 11am-3pm or by appt. Contact: 864/353-6151 or at (www.catherinehayesart.com).

Charlie Pate Gallery, 11 Lois Ave., Greenville. **Ongoing** - Featuring original oil and pastel paintings by Charlie Pate, as well as drawings, prints and bronze sculpture. Pate's art is all representational. Hours: Mon.-Fri., 10am-5pm. Contact: 864/430-5967.

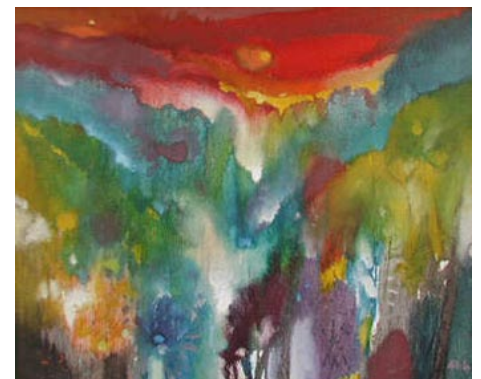
Christopher Park Gallery, 608-A South Main Street, Greenville. **Ongoing** - Offering hand-made and humorous art by North and South Carolina artists. Hours: Tue.-Fri., 10am-6pm & Sat., noon-6pm. Contact: 864/232-6744 or at (www.christopherparkgallery.com).

Daly Designs Gallery, 421 S. Main St., Greenville. **Ongoing** - The gallery continues to show many local artists who work in various mediums, and has expanded to include art from other areas. Liz Daly-Korybski creates jewelry from glass in her on site studio, and other artists can be seen creating in the gallery as well. Hours: Tue.-Thur., 11am-6pm; Fri., 11am-9pm; Sat., 11am-9pm; & Sun., 1-5pm. Contact: 864/325-4445 or at (www.dalydesigns.com).

Doug Young Studio and Gallery, 12-A Lois Ave., Greenville. **Ongoing** - Featuring representational sculptures by Doug Young. Hours: Mon.-Fri., 10am-5pm. Contact: 864/430-3130 or at (www.dougyoungstudios.com).

Gallery at Grove, 1312 Augusta St., Greenville. **Ongoing** - Featuring works by local and regional artists, including originals by local artist Joseph Bradley, Katie Walker, Kate Wofford Ambrose, and Ron Greenlee. Specializing in fine art and unique custom framing designs. Hours: Tue.-Fri., 10am-5:30pm & Sat., 10am-3pm. Contact: 864/235-4935 or at (www.galleryatgrove.com).

Guy Stevens, Gallery/Studio, 1263 Pendleton St., Greenville. **Ongoing** - Featuring original works in oil and watercolor by Guy Stevens. We also offer a collection of limited edition giclee and offset lithograph on paper and stretched canvas as well as hand textured and painted frames. Hours: Mon.-Fri. hours vary call ahead. Contact: 864/235-6748, 864/915-8918 or at (www.TheArtistsBalcony.com).



Work by Carl Blair

Hampton III Gallery, 3100 Wade Hampton Blvd., 10 Gallery Center, Taylors. **Ongoing** - works by Sigmund Abeles, John Acorn, Dave Appleman, Jane Armstrong, J. Bardin, Carl Blair, Emery Bopp, Bette Lee Coburn, Jim Craft, Jamie Davis, Jeanet Dreskin, Tom Flowers, William Halsey, Wolf Kahn, James Kirby, Darell Koons, Paul Matheny, Corrie McCallum, Glen Miller, Mark Mulfinger, Charles Quest, Ed Rice, Merton Simpson, Laura Spong, Carl Sublett, Leo Twiggs, Art Werger, Phillip Whitley, Harrell Whittington, Mickey Williams, Paul Yanko, and Jas Zadurowicz. Hours: Tue.-Fri., 1-5pm; Sat., 10am-5pm. Contact: 864/268-2771 or at (www.HamptonIIIGallery.com).

Little House Art Studios, 602 Strange Rd., Taylors. **Ongoing** - Featuring exhibits of fiber art, mixed media collages and painting by Susan R. Sorrell and Anne K. Taylor's photography, paintings and collages. Hours: by appt. only. Contact: 864/517-4023 or at (www.littlehouseartstudios.com).

Ilyn strong, 119 North Main Street, Greenville. **Ongoing** - featuring the works of over 60 national custom jewelry designers and glass blowers. Hours: Mon.-Sat., 10am - 5:30pm. Contact: 864/233-5900 or at (www.ilynstrong.com).

continued on Page 39