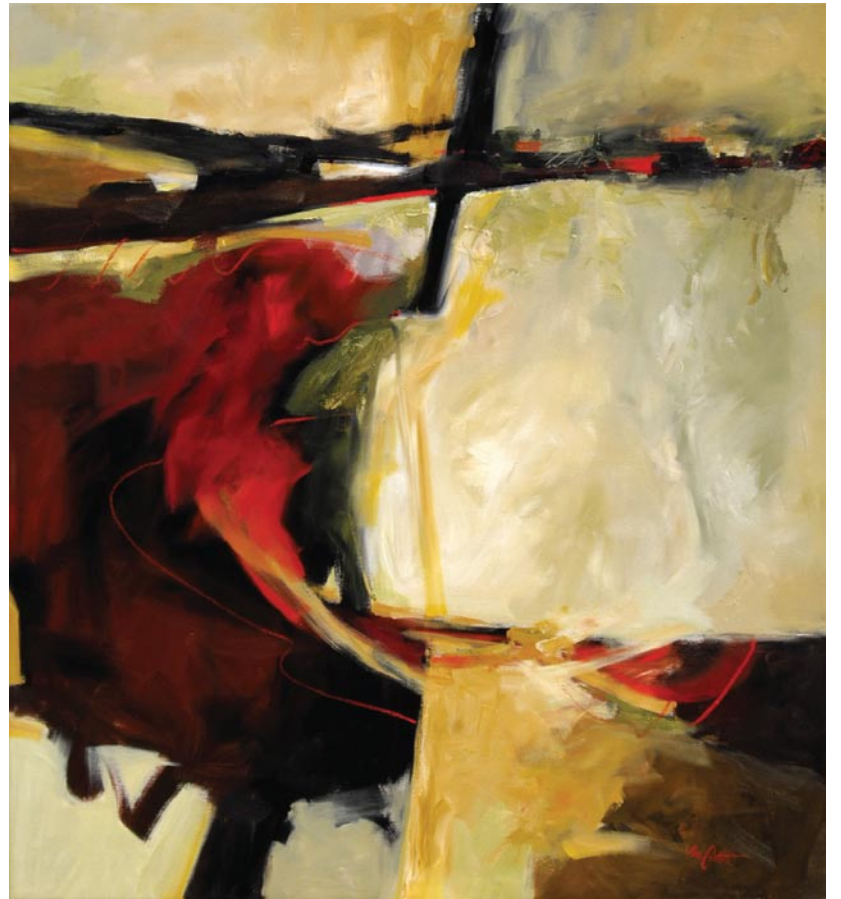




BETTY ANGLIN SMITH
WARM FRONT
36X30 O/C

**SMITH
KILLIAN**
FINE ART

9 QUEEN STREET
CHARLESTON, SC
843-853-0708
WWW.SMITHKILLIAN.COM



Intention
Oil on Canvas, 72 x 66 inches

Eva Carter

Plan a visit to the new Downtown Studio for a private showing of latest works.

New Downtown Studio
6 Gillon Street, Suite 8 (second floor)
Charleston, SC 29401
Just north of the Old Exchange Building

By Appointment Only
Please call (843) 478-2522
www.EvaCarterGallery.com

M Gallery of Fine Art, SE

continued from Page 6

portrait drawing classes, California Art Institute). She has taken several prizes throughout her career and exhibits through organizations including the Oil Painters of America, Portrait Society of America, and California Art Club.



Work by Olga Krimon

Krimon offered the following statement, "I find an idea – an abstract idea – and I follow it. It may be a compositional solution based on diagonals or horizontals, or on repeated shapes. Or it may be the movement of the light – starting slow on the left, getting progressively stronger, culminating at a focal point and then gradually receding. It may be the way the

silhouette blurs into the background and then has areas of stronger sharper contrast that dominate and make the shape come alive. And it's always about the rhythm, about the movement. You rearrange, you find the best solutions by varying the relationships, the degrees of warm/cold, sharp/soft, dark/light – to create that movement."

"The best representational art is about that, and that's what I'm trying to follow," adds Krimon. "It really doesn't matter if it's a painting of a sitter, a still life, or a landscape – it's not about the object itself. The idea is very abstract, which is ironic for a truly realistic painting. I'm also attracted to a painting where something is happening around the focal area, while the other areas are much quieter and subdued - not a screaming piece where things happen all over the place, but a painting that guides me into it and makes my eyes follow it in a very calculated way. Everything else is secondary."

For further information check our SC Commercial Gallery listings, call the gallery at 843/727-4500 or visit (www.mgalleryoffineart.com).

The Wells Gallery on Kiawah Island, SC, Features Works by Rick McClure

The Wells Gallery at The Sanctuary in Kiawah Island, SC, is presenting the exhibit, *Tranquility*, featuring peaceful oil paintings that evoke a feeling of calm and beauty by Rick McClure, on view through July 10, 2011.

McClure has been painting for more than 25 years. His free, painterly approach to recording locations in America and abroad has become popular with collectors nationwide, and McClure has captured numerous awards including those

at the *American Impressionists Society National Exhibition*, the *71st Grand National Exhibition at the Salmagundi Club* and the Best of Show at the *Cincinnati Art Club's Viewpoint 2003*.

McClure is also a member of the Oil Painters of America, a signature member of the The National Academy of Professional Plein Air Painters and the American Impressionist Society. Collectors and critics alike praise McClure for his style, and

continued above on next column to the right

his devotion to his art.



Work by Rick McClure

McClure's admiration for the landscape is evident when gazing upon his works, and it is easy to see that his true passion is found in capturing the landscape *En Plein Aire*. *Plein Aire* is a French term that means painting out of doors in natural light. Impressionist painters such as Camille Pissarro and Edouard Manet were some of the first painters to employ the *Plein Aire* techniques in which the artist would paint outside, working to capture the changing and fleeting light.

McClure's paintings are infused with the techniques of European Impressionists and elements of the natural environment. Many of his on location gems stand on

their own while others form the basis for larger studio works, all of which sparkle with spontaneity.

"My sincerest hope is that upon introspection, the viewer will gain a greater appreciation for the beauty that is our world," states McClure. This gift for capturing the true feeling of the outdoors saturates his canvasses to the delight of the viewer, and it is brought to us in his depictions of Kiawah and the surrounding area.

McClure offers the following about this exhibit, "As a painter I am drawn to depicting the marshes of the Lowcountry. The ever changing light from the South Carolina sky provides me with a variety of moods when it comes to rendering the marsh waters and grasses. It was my goal as an artist to convey this message on canvas in this exhibition."

For further information check our SC Commercial Gallery listings, call the gallery at 843/576-1290 or visit (www.wellsgallery.com).

The Pink House Gallery



Nancy Rushing

Presenting works in a Charleston Garden Theme in July

Always lots of new work by Grimsley, Rushing, Price & Blandenburg in the oldest building in Charleston, SC
17 Chalmers St (843) 723-3608
Mon-Sat 10-5
<http://pinkhousegallery.tripod.com/>

The Finishing Touch
Original Art, Fine Prints,
Custom Framing, and
Interior Design by appointment
140-A West Richardson Ave.
Summerville, South Carolina 29483
843/873-8212
Mon. - Fri., 10am-6pm; Sat. 10am - 5pm