

# Some Exhibits That Are Still On View

Our policy at *Carolina Arts* is to present a press release about an exhibit only once and then go on, but many major exhibits are on view for months. This is our effort to remind you of some of them.



Work by Fred Johnston

The NC Pottery Center in Seagrove, NC, is presenting *BIG RED: Chrome Red and Other Red Glazes of the North Carolina Piedmont*, an exhibit co-curated by Fred Johnston and Tommy and Cindy Edwards, on view through July 27, 2013. From the earliest days of North Carolina's traditional art pottery production, potters sought to achieve a vibrant red glaze. The most successful red glazes fashioned in the 1930s are today referred to by the name, "chrome red." Their reddish-orange color was created by the addition of chromium oxide to the potters' usual lead glaze, a coating that was used by area potters for centuries before on utilitarian wares. The red glaze was a hit with customers, and essentially every art pottery shop, including J. B. Cole's Pottery, Auman Pottery, Royal Crown Pottery and Porcelain Co., Smithfield Art Pottery, and others, added it to their repertoire. For further information check our NC Institutional Gallery listings, call the Center at 336/873-8430 or visit ([www.ncpotterycenter.org](http://www.ncpotterycenter.org)).



Cyrene XV: Venetian Blue by Steven Naifeh

The Columbia Museum of Art in Columbia, SC, is presenting *Found in Translation: The Art of Steven Naifeh*, featuring the first retrospective exhibition of contemporary works by this SC based artist, on view through Sept. 1, 2013. The 26 large-scale works of modern art reflect Naifeh's personal taste, preferences and attitudes about geometric abstraction that developed over the span of 40 years. It is hardly surprising that Naifeh's childhood in the Middle East educated his eye to the rigorous forms of Arab and Islamic art. The artist was born in Iran, the son of American diplomats. He spent his childhood in a succession of Foreign Service postings spread across three continents in the Islamic world. For further information check our SC Institutional Gallery listings, call the Museum at 803/799-2810 or visit ([www.columbiamuseum.org](http://www.columbiamuseum.org)).

The North Carolina Museum of History in Raleigh, NC, is presenting *Art in Clay: Masterworks of North Carolina Earthenware*, on view through Sept. 1, 2013. The exhibition will celebrate the achievements of earthenware potters during the 18th and 19th centuries. This landmark exhibition showcases nearly 200 objects made by Piedmont potters. The exhibit was organized by Old Salem Museums & Gardens. Among the most masterful items are slip-



Dish, probably made during Gottfried Aust's tenure as master of the pottery at Salem, North Carolina, 1775-1785. Lead-glazed earthenware. Image by Gavin Ashworth, courtesy of Old Salem Museums & Gardens.

ware dishes created by Moravian potters at Salem and Bethabara (in present-day Forsyth County) and by contemporary Germanic and British craftspeople in other areas of the Piedmont region. *Art in Clay* features pottery from distinguished public and private collections. For further information check our NC Institutional Gallery listings, call the Museum at 919/807-7900 or visit ([www.ncmuseumofhistory.org](http://www.ncmuseumofhistory.org)).



Delta, 2006, by Tomory Dodge

The Southeastern Center for Contemporary Art (SECCA) in Winston-Salem, NC, is presenting *Tomory Dodge & Denyse Thomasos: Directions to a Dirty Place*, on view through Sept. 1, organized by SECCA and curated by Steven Matijcio. Paint can be both the image and the "stuff" of structure, moving between representation of place, and place itself, in the exhibit *Tomory Dodge & Denyse Thomasos: Directions to a Dirty Place*. The work of Denver-born, Los Angeles-based artist Tomory Dodge and Trinidad-born, New York-based artist Denyse Thomasos slide between these poles in highly evocative ways. For further information check our NC Institutional Gallery listings, call the Center at 336/725-1904 or visit ([www.secca.org](http://www.secca.org)).

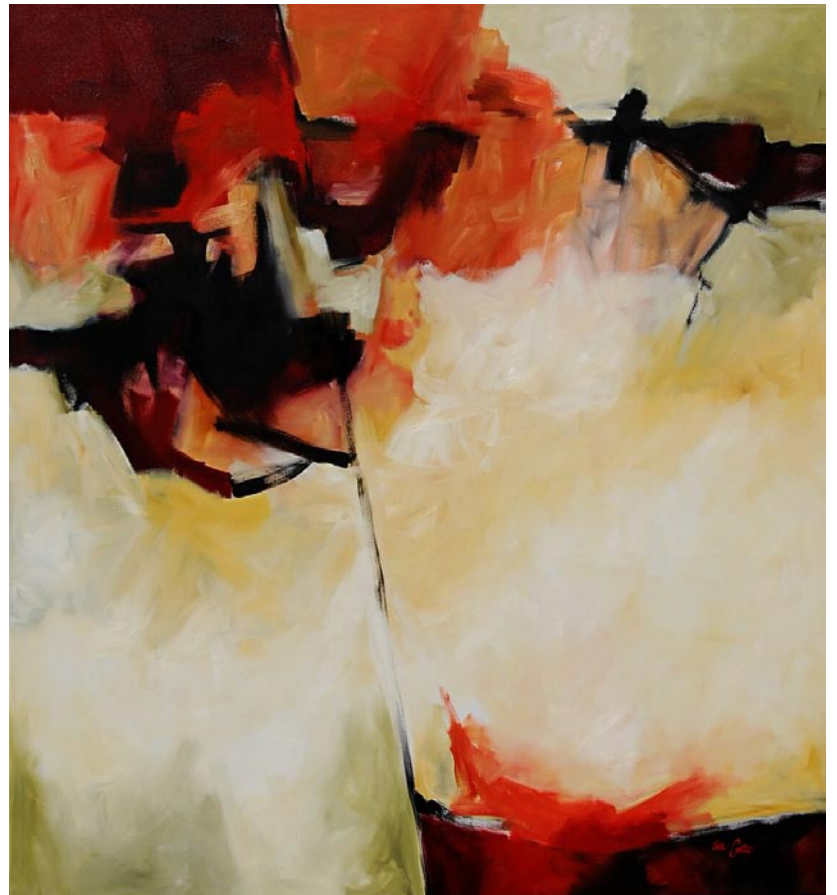


Blood Bank, 2012, inkjet print. Image courtesy of Kavi Gupta, Chicago, Berlin.

CAM Raleigh in Raleigh, NC, is presenting *Melanie Schiff - The stars are not wanted now*, on view in the Main Gallery through Sept. 1, 2013. The exhibit is the largest and most comprehensive presentation of Melanie Schiff's photographs to date. Spanning the years 2005 through 2012, and bracketing the period of Schiff's move from Chicago to Los Angeles in 2008, the exhibition illuminates ongoing concerns in the artist's investigations of light, atmosphere, place and landscape. For further information check our NC Institutional Gallery listings, call the gallery at 919/513-0946 or visit (<http://camraleigh.org/>).

The Gibbes Museum of Art in Charleston, SC, is present *Spoletto Watercolors of Stephen Mueller and Carl Palazzolo From the Collection of David and Carol Rawle*, on view in the Rotunda Galleries through Sept. 15, 2013. The Gibbes Museum of Art in conjunction with the Spoletto Festival

*continued on Page 9*



Fracture  
Oil on Canvas, 72 x 66 inches

## Eva Carter

Studio  
6696 Bears Bluff Road  
Wadmalaw Island, SC 29487

By Appointment Only  
Please call (843) 478-2522  
[www.EvaCarterGallery.com](http://www.EvaCarterGallery.com)



# Karen Burnette Garner

## Artist

*Summer Artworks have arrived!*

The Treasure Nest Art Gallery  
1055 Johnnie Dodds Blvd., (Crickentree Village)  
Mount Pleasant, SC 29464  
843-216-1235

Curious? Read my blog at [www.karenburnettegarner.com](http://www.karenburnettegarner.com)