

# Halsey Institute of Contemporary Art in Charleston, SC, Features Works by Bob Ray & Steve Johnson

The Halsey Institute of Contemporary Art at the College of Charleston School of the Arts in Charleston, SC, is pleased to present two concurring solo exhibitions, *White Days Unswallowed*, by Bob Ray and *From the Ground Up*, by Steve Johnson. The exhibitions open with a reception on Friday, Aug. 26 from 5-7pm and run through Oct. 7, 2011. Prior to the public reception, the community is invited to a gallery walk-through with Bob Ray and Director/Senior Curator Mark Sloan at 4:30pm.



Work by Steve Johnson

Steve Johnson was born and raised in Mesa, AZ, and moved to San Francisco in 1996. He graduated from San Francisco State University with a BA in printmaking and painting in 2003 and received an MFA in painting and drawing from Arizona State University in 2008. Johnson was invited as a Master Printmaker artist in residence at the Robert Blackburn Printmaking Workshop in NYC in 2010 where he completed a suite of lithographs. The published prints have since been shown in art fairs and exhibitions both nationally and internationally: Editions/Artists' Book Fair and New NY Print Publishers, NYC; Impressions Orlando Print Fair, FL; and Frans Masereel Centrum, Belgium.

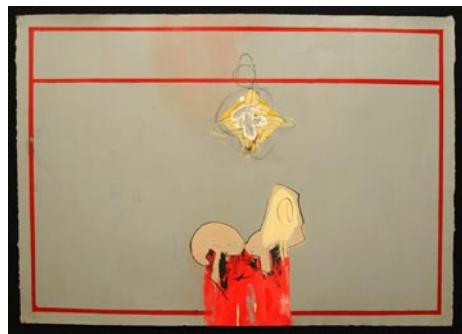
This year, Johnson has had a solo exhibition at 111 Minna Gallery in San Francisco, CA and at Blackburn 20/20 in New York City. Johnson is an Assistant Professor of Drawing at the College of Charleston.

Johnson states, "One of my objectives as an artist is to bridge conflicting views by revealing shared concerns and common ground. The basic desire to find and maintain security, whether in a home, job, or relationship, in a forever shifting landscape, can create more losers than winners. Using a cast of chickadees, rats, and hummingbirds, my current work navigates the gray areas and middle grounds inhabited by animals with competing interests."

For the exhibition at the Halsey Institute, Johnson merges drawing with painting as he layers a variety of dry and wet mediums on wood panels. The warm tones and textures of the wood panels serve as a background for the small animals rendered with a cool palette of colored pencils and watercolors. In addition to showing a sampling of recent prints and drawings, Johnson will be creating a large, site-specific drawing installation as part of the exhibition.

Bob Ray, born just east of Kansas City, MO, works in a variety of media, from drawings, paintings, collage, and sculpture,

to correspondence and performance works. His aesthetic borrows heavily from the Dada and Fluxus movements, with a strong combination of word, gesture, and image. Since 1990, he has been very active in international correspondence art activities and projects in Great Britain, Germany, Italy, Egypt, Japan, United States, Bolivia, Spain, Hungary, Switzerland and Latvia. He has had extended exchanges with some of the most significant correspondence artists in the world, including Ray Johnson, Richard C. Giorgio Cavalinni and Torma Cauli.



Work by Bob Ray

Ray's works are as illusive as his artist statement: "it was not made of words so I ate what I could grasp"

What is made poorly, what is made well -- an Ozark hog pen, a thoroughbred stable in Kentucky-- what runs between these constructions? How does one arrive at these points? The poetic image, mysteries of a nocturnal fable, random juxtapositions of the man made and the natural which eventually leak into each other; this is the composition of my visual interest at the moment.

"it wasn't what I thought it was, and isn't what I think it is"



Work by Bob Ray

In addition to his complex and varied visual works, Ray is also an accomplished "honky tonk" singer and guitar player. Currently living twenty-three miles out in the Atlantic Ocean on the island of Ocracoke, NC, Ray's work has been published and exhibited internationally.

The Halsey Institute of Contemporary Art is administered by the School of the Arts at the College of Charleston and exists to advocate, exhibit and interpret visual art, with an emphasis on contemporary art.

For further information check our SC Institutional Gallery listings, call the Institute at 843/953-4422 or visiting ([www.halsey.cofc.edu](http://www.halsey.cofc.edu)).

photographs from the series *View From A Mountain*. The photographs are made from the top of a mountain in Tucson, AZ. Labate's photographs are inspired upon the practice of traditional photography and the development of digital technology that has transformed the medium. Labate's photographs document rural, suburban populations and their intriguing lifestyle. Through digital techniques, Labate blurs the landscapes of his original photo and solely focuses on a singular object of his initial attention; for example, a red semi truck pops out of a vague suburban neighborhood. Labate explores the distinction between the real-world and fabricated world by altering traditional photographs with the newly evolving digital technology.

Mandell's inspiration stems from his belief that, "The psychological state of a society is illuminated by the structures it creates and how those structures are used". His sculptures observe civilizations by creating streamlined versions of existing structures that have been scaled down and represented in a way that architecture's social influence becomes more evident. Mandell's work betrays the ideals of modularity, order, efficiency, and convenience that are desired in today's structures.

Labate is a photographer and educator. His work focuses on maintaining a connection between traditional photography and digital technology. He has exhibited his work nationally and internationally. His work can be seen in the collections of the Art Institute of Colorado, Denver, the Center for Creative Photography, Tucson, the Tucson Museum of Art, the SnellWimmer Collection, the Streich Lang Collection, the Weeks Gallery and the Roussenski Lom National Park in Bulgaria. He is a recipient of the Visual Arts Fellowship from the Arizona Commission on the Arts, an Artist's Grant from the Contemporary Forum of the Phoenix Art Museum, and an Artist's Grant from Polaroid of Tokyo, Japan. Labate received a BS in engineering from Clarkson University, a BFA in photography from Massachusetts College

of Art and an MFA in photography from the University of Arizona. He is currently the Chair of Photography in the School of Art at the University of Arizona, Tucson.

Mandell has been the Assistant Professor of Sculpture at Boise State University since 2010. He has previously taught at the University of North Texas in Denton and at Penn State in State College, PA. His work has been featured in numerous group and solo exhibitions including: Fuller Projects, Indiana University, Bloomington, HH4433 Gallery, Ohio State University, Columbus, Eastern Expansion Gallery, Chicago, Takt Kunstprojektraum, Berlin, Germany and Ferencvarosi Gallery, Budapest, Hungary. Mandell has been recognized by such publications as *Time Out Chicago Magazine*, *The Chicago Tribune*, and *Sculpture Magazine*. He received a BFA in Drawing from the Milwaukee Institute of Art and Design in 2003 and his MFA in sculpture from Indiana University, Bloomington in 2007.

Redux Contemporary Art Center is a Charleston, SC nonprofit organization committed to the fostering of creativity and the cultivation of contemporary art through diverse exhibitions, subsidized studio space for artists, expansive educational programming, and a multidisciplinary approach to the dialogue between artists and audience. Housed within a 6,000 square foot warehouse are two galleries, fifteen private artist studios, print shop, darkroom, woodshop, classroom, and film-screening area. Redux is committed to showing artwork by national and international artists, supporting local artists, and enriching the Charleston community by offering adult and youth education programs. As the only arts organization in Charleston providing these much needed opportunities, Redux maintains an ambitious schedule of exhibition, outreach, and studio programs to accomplish our goals.

For further information check our SC Institutional Gallery listings, call the Center at 843/722-0697 or visit ([www.reduxstudios.org](http://www.reduxstudios.org)).

## Charleston Artist Guild in Charleston, SC, Features Works by Teresa Jones



Work by Teresa Jones

award winning artist Teresa Jones, on view in the Guild Gallery from Aug. 1 - 31, 2011. A reception will be held on Aug. 5, from 5-8pm.

Jones has lived in South Carolina most of her life and where she developed an intense familiarity with the subtle beauty of the Lowcountry. She began her art career in 2004 after moving to Charleston. Primarily a landscape painter, Jones is exploring the new genre of still life. In this exhibit she is presenting a collection of paintings expressing her love for wine bottles, flowers and other still life.

Jones began her studies with local artist and teacher Joyce Hall and has since studied with many local and nationally known artists. She presently is a student of the highly accomplished artist Elizabeth Bronson of McClellanville, SC.

For further information check our SC Institutional Gallery listings, call the Guild at 843/722-2454 or visit ([www.charlestonartistguild.com](http://www.charlestonartistguild.com)).

The Charleston Artist Guild in Charleston, SC, will present the exhibit, *VINO... And Other Still Life*, featuring works by

## Redux Contemporary Art Center in Charleston, SC, Features Works by Joseph Labate and Ryan Mandell

Redux Contemporary Art Center in Charleston, SC, is proud to present *Social Velocity*, featuring works by Joseph Labate and Ryan Mandell, on view from Aug. 5 through Sept. 17, 2011. A lecture given by each artist will be held at Redux on Friday, Aug. 5 at 5pm followed by an opening reception from 6-9pm.

Joseph Labate and Ryan Mandell's subjects explore the newly developing

suburban society and its commercial influences. The artists similarly focus on and bring attention to the structures and environment that inhabits a majority of the United States. Labate's photographs examine who we are and how and where we live, while Mandell's sculptures explore architecture's influence on civilization.

For this exhibition, Labate will exhibit

*continued above on next column to the right*

## M Gallery of Fine Art SE in Charleston, SC, Features Works by Kevin Menck and Ken Pledger

M Gallery of Fine Art SE in Charleston, SC, will present the exhibit, *Pastorals and Portraits*, featuring works by Kevin Menck and Ken Pledger, on view from Aug. 4 - 31, 2011. A reception will be held on Aug. 5, from 5-8pm.

Born and raised in Wadsworth, OH, Ken Pledger began studying with Jack Richard in Cuyahoga Falls, OH. He then studied with Robert Brackman for two summers before moving to Colorado. With age and experience has come a much looser approach to the application of

paint, the "painterly approach" in essence. His latest body of work, which will appear in this exhibit will consist of over a dozen portraits and landscapes, and represents a move towards that painterly approach. The painting he is most proud of in the collection is *Janelle* for its "handling of paint and feeling of light."

Kevin Menck was born and raised in middle Tennessee. In 2002, he met local painter Jason Saunders, who was instrumental to his artistic development.

*continued on Page 6*