

museums throughout the United States.. Hours: Tue.-Fri., 10am-5pm & Sat., 10am-2pm. Contact: 336/667-2841 or at (www.wilkesartgallery.org).

Penland



Work by Luke Haynes

Penland Gallery, first building on right as you enter the campus, Penland School of Crafts, Penland Road, Penland. **Through Sept. 16** - "Forecast," featuring an exhibit of works by 17 artists who form a new wave of creative talent. **Focus Gallery, Through Sept. 16** - Featuring a show of Sarah Loertscher's silver jewelry inspired by the crystalline structures of minerals. **Ongoing** - Featuring works by Penland Instructors and affiliated artists. Hours: Tue.-Sat., 10am-5pm & Sun., noon-5pm. Contact: call Kathryn Gremley, at 828/765-6211 or at (www.penland.org).

Pittsboro

ChathamArts Gallery, 115 Hillsboro St., Pittsboro. **Ongoing** - Featuring a wide range of original work produced by local artists. Hours: Wed.-Sat., 11am-5pm & Sun. noon-4pm. Contact: 919/542-0394 or at (www.chathamarts.org).

Raleigh

Raleigh City Plaza, Raleigh. **Through Sept. 2012** - Featuring the work of three sculptors: Adam Walls of Laurinburg, NC, designed "Balancing Act," a brightly painted steel sculpture more than 12 feet tall; Robert Coon of Vero Beach, FL, will show "My Big Red," a 15-foot sculpture of fabricated and painted aluminum; and Deborah Marucci of Venice, FL, will present "Spiral Orb," a 10-foot-tall sculpture of powder-coated steel and aluminum. Contact: Kim Curry-Evans at Raleigh Arts Commission by e-mail at (kim.curry-evans@raleighnc.gov).

Artspace, 201 E. Davie Street, Moore Square Art District, behind City Market, Raleigh. **Gallery One, Aug. 3 - Sept. 15** - "To Weave. To Stack. To Stain," featuring an installation by Jonathan Brilliant as the 2012 Summer Artist-in-Residence. A reception will be held on Aug. 3, from 6-10pm. During the month of July, Brilliant welcomed visitors to his temporary studio, Artspace's Gallery One, while he focuses on creating a large-scale installation comprised of simple objects such as coffee stirrers and plastic coffee lids. Building on his recent exhibition at Flanders Gallery (also in Raleigh), "To Weave. To Stack. To Stain." will physically incorporate parts of the previous installation. **Gallery Two, Aug. 14 - 18** - "Artspace Summer Arts Program Youth Exhibition". A reception will be held on Aug. 18, from 12:30-3pm. Join us on Saturday, Aug. 18 for Family Fun Day from 12:30 - 3pm in conjunction with the Summer Arts Program Youth Exhibition Reception. This one-of-a-kind festival for the whole family includes artists' demonstrations, face-painting, carnival treats, and art activities for young and old! Fun and games will include exciting artist demonstrations, face painting, and make & take activities. Lunch items and carnival treats will be available. **Upfront Gallery, Aug. 3 - Sept. 1** - "Silent Home: Adjustments," featuring works by Mary Shannon Johnstone. A reception will be held on Aug. 3, from 6-10pm. Johnstone has been taking photographs of her family since she was thirteen, when she got her first camera from a Happy Meal. Johnstone used that camera everyday to photograph her family and friends in an effort to remember what her life was like, "afraid I would forget who I was. I felt a need to record my family, my history and my voice." **Lobby Gallery, Aug. 3 - Sept. 1** - "Public Record," featuring works by Sarah West, a former Regional Emerging Artist-in-Residence. A reception will be held on Aug. 3, from 6-10pm. West's work resides at the intersection of jewelry and sculpture. She notes that she is "inspired by the open lattice work of bridges and electric towers, the internal architecture of buildings as well as maps and trajectory patterns." Hours: Mon.-Sat., 9am-5pm. Contact: 919/821-2787 or at (www.artspacenc.org).

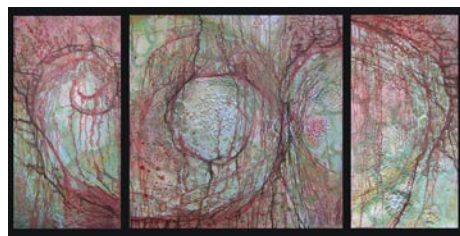
CAM Raleigh, 409 W. Martin Street, between Harrington and West streets, Raleigh. **Main Gallery, Through Sept. 2** - "The Credentialist," by José Lerma is a Museum premiere of newly commissioned works. Lerma currently lives and works in New York and Chicago, where he is a faculty member at the School of the Art Institute

of Chicago. Lerma creates intricate installations that combine painting and non-traditional materials such as reflective fabrics and commercial carpet, relying on a compendium of mediums, references, and elements that combine his personal history and extensive academic accolades with his awareness of social history. The Credentialist is a new body of 18 artworks commissioned for the main gallery at CAM Raleigh highlighting his ability to combine and collapse facets of history from his personal viewpoint. Central to the exhibition is the notion of rising and falling, particularly the precipitous demise of great historical figures. **Independent Weekly Gallery, Through Oct. 8** - "Form Special: Solar Projects and Site Collages by Andy Hall". Hours: Mon., 11am-6:30pm; Wed.-Fri., 11am-6:30pm; Sat. & Sun., noon-5pm; and 1st & 3rd Fri., open till 9pm. Contact: 919/513-0946 or at (<http://camraleigh.org/>).

Collective Arts Gallery & Ceramic Supply, 8801 Leadmine Road, Suite 103, Raleigh. **Ongoing** - Featuring works by local and nationally renowned artists on permanent exhibit. Hours: Tue.-Fri. 11am-7pm & Sat., 10am-6pm. Contact: 919/844-0765.

Gregg Museum of Art & Design, located in the Talley Student Center in the middle of the NCSU campus, Raleigh. **Extended Through Aug. 31** - "Barkcloth, Bras and Bulletproof Cotton: The Powers of Costume". According to the Biblical story of Genesis, the moment that Adam and Eve ate the forbidden fruit and became self-aware, the very first thing they did was make themselves something to wear. Using amazing objects from the Gregg Museum's permanent collection, this exhibition explores not only how clothing serves to protect, shelter, shield, and modify the human body, but also how what we wear helps us lure, seduce, dominate, segregate or manipulate others, discover spirituality and personal self awareness, proclaim our individuality or group membership, or express ourselves. **Through Aug. 31** - "In Response: Contemporary Weavings by Vita Plume and Ann Roth". The exhibition is dedicated to the museum's late Associate Director, Dr. Lynn Ennis, and features weavings by Ann Roth, Gallery Director and studio art instructor at Meredith College, and by Vita Plume, associate professor at NC State's College of Design. Both weavers were close friends of Ennis, and show new pieces that respond both to her love of textiles as well as to specific works in the Gregg Museum's permanent collection. Plume uses portrait photographs taken in the Appalachians in the early 1900s by Doris Ulmann, Bayard Wooten, Paul Buchanan and others as a source of inspiration for making ghostly images and patterns created on a digital Jacquard loom, which explore the instability of visual and cultural identity. **Ongoing** - The Gregg's collecting focus reflects the mission of North Carolina State University and supports its academic programs by providing research opportunities for NCSU students and the citizens of North Carolina and beyond. The collection includes, but is not limited to, textiles, ceramics, outsider/folk art, photography, architectural drawings & modern furniture. The Gregg Museum of Art & Design also puts on six to eight exhibitions per year in its two galleries, in addition to exhibiting work at various places in the Talley Student Center and around campus. Hours: Mon.-Fri., noon-8pm and Sat.-Sun., 2-8pm. Contact: 919/515-3503 or at (www.ncsu.edu/arts).

Miriam Preston Block Gallery, Raleigh Municipal Building, lobby of the Avery C. Upchurch Government Complex, presented by the City of Raleigh Arts Commission, 222 West Hargett Street, Raleigh. **Aug. 2 - Sept. 17** - "4 x 24," featuring an exhibit of photography by Nathan Wellman, Adam Hajnos, Julian Thomas and Gerri Fernandez, guest curated by Georges Le Chevallier. A reception will be held Aug. 2, from 5-7pm. Hours: Mon.-Fri., 8:30am-5:15pm. Contact: 919/996-3610 or at (www.raleigh-nc.org/arts).



Work by Shelly Hehenberger

Nature Art Gallery, inside the Museum Store, North Carolina Museum of Natural Sciences, 11 W. Jones Street, downtown Raleigh. **Aug. 3 - Sept. 3** - "Chaos and Cosmos," featuring an exhibit of paintings by Shelly Hehenberger. A reception will be held on Aug. 3, from 6:30-8:30pm. This exhibit is a meditation on the patterns of living things explored through the process of drawing and painting. Admission: Free. Gallery Hours: Mon.-Sat., 9am-4:45pm & Sun., noon-4:45pm. Store Contact: 919/733-7450, ext. 360 or at (www.naturalsciences.org/store/nature_gallery.html).

North Carolina Museum of Art, 2110 Blue Ridge Road, Raleigh. **East Building, Mey- mandi Exhibition Gallery, Through Aug. 19** - "Rhythms of the Heart: The Illustration of Ashley Bryan". The exhibition highlights the bright and colorful illustrations of the beloved children's book author whose work was first featured at the NCMA in "Fins and Feathers: Original Children's Book Illustrations from The Eric Carle Museum of Picture Book Art". In this exhibition viewers will be able to experience Bryan's unique illustration style, which combines references to music, dance, and storytelling traditions. The exhibition includes Bryan's original preliminary pencil drawings, watercolor sketches, and completed wood-block prints, ultimately presented in award-winning books that retell African folktales for young audiences. **West Building, Ongoing** - Featuring 10 additional sculptures by the celebrated French artist Rodin on loan from Iris Cantor's private collection. **Ongoing** - "John James Audubon's The Birds of America". The state has owned this treasured volume since 1848, but it has never been exhibited. **Ongoing** - The North Carolina Museum of Art has an outstanding permanent collection of more than 5,000 objects spanning antiquity to the present day. On the occasion of the expansion, the Museum has acquired more than 100 new works of art. Representing commissions, gifts, and purchases, the new works encompass important and diverse examples of historic and contemporary art from around the world, and will be installed in the Museum's new building and the surrounding landscape. Highlights include a gift of 28 sculptures by Auguste Rodin, and work by such internationally acclaimed artists as Roxy Paine, Ursula von Rydingsvard, El Anatsui, Jaume Plensa, Jackie Ferrara, Ellsworth Kelly, and David Park, among others. Hours: Tue.-Sat., 9am-5pm; Sun., 10am-5pm; & open until 9pm on Fri. Contact: 919/839-6262 or at (www.ncartmuseum.org).

North Carolina Museum of History, 5 East Edenton Street, (between Salisbury and Wilmington Streets), Raleigh. **Ongoing** - Featuring exhibits dealing with North Carolina's history as a theme. Admission: Free. Hours: Mon.-Sat., 9am-5pm & Sun., noon-5pm. Contact: 919/807-7900 or at (<http://www.ncmuseumofhistory.org/>).

Rotunda Gallery, Johnson Hall, Merideth College, 3800 Hillsborough Street, Raleigh. **Through Aug. 26** - "Annual Juried Student Art Exhibition". This annual survey exhibition highlights the range and depth of Meredith College's art students' work in sculpture, painting, drawing, photography, textiles, graphic design, ceramics, and mixed media. Hours: Mon.-Fri., 9am-5pm & Sat.-Sun., 2-5pm. Contact: 919/829-8465 or at (<http://www.meredith.edu/art/gallery.htm>).

ALTERNATE ART SPACES - Raleigh **City Plaza**, 400 Block of Fayetteville St., downtown Raleigh. **Through Aug. 31** - "Art on City Plaza," featuring 10-15-ft sculptures by Robert Coon, Deborah Marucci and Adam Walls. Sponsored by City of Raleigh Arts Commission, Visual Art Exchange & Artspace. Contact: (www.raleighnc.gov/arts).

Rocky Mount

Four Sisters Gallery, Dunn Center for the Performing Arts, NC Wesleyan College, 3400 N. Wesleyan Blvd., Rocky Mount. **Through Oct. 13** - "Humanity: Selections from the Permanent Collection 1952 to 2012". From the origin of the Four Sisters Collection of Self-Taught Visionary Art when the Robert Lynch Collection of Outsider Art gave foundation and the collecting impetus to the NC Wesleyan College's Four Sisters Gallery in 1987, the collection continues to grow and focus on our kind. Hours: Mon.-Fri., 9am-5pm & Sat., 9am-noon. Contact: 252/985-5268.

Maria V. Howard Arts Center, Imperial Centre for the Arts and Sciences, 270 Gay Street, Rocky Mount. **Through Aug. 15** - "Salmagundi XV," a national juried outdoor sculpture competition. And three exhibits from the Embroiderers' Guild of America. Hours: Tue.-Sat., 10am-5pm & Sun., 1-5pm. Contact: 252/972-1163 or at (<http://arts.imperialcentre.org/>).

Mims Gallery, Dunn Center for the Performing Arts, NC Wesleyan College Campus, 3400 N. Wesleyan Blvd., Rocky Mount. **Through Aug. 12** - "The Dog Show," featuring a group show of painting focused on dogs. This exhibition features four artists who treat the subject matter of dogs differently from realistic portraiture, surrealistic levity, expressionist concern, to pop personification. Hours: Mon.-Fri., 9am-5pm & one hour before performances. Contact: call 252/985-5268 or at (www.ncwc.edu/Arts/Mims/).

North Civic Gallery, Dunn Center for the Performing Arts, NC Wesleyan College Campus, 3400 N. Wesleyan Blvd., Rocky Mount. **Through Sept. 28** - Featuring an exhibit of 44 drawings by quadriplegic graduating senior from Southern Nash High School, Daylon Jones. Jones is a

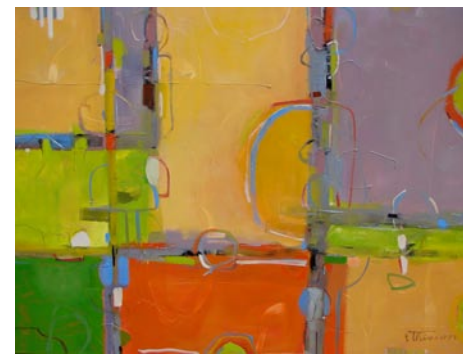
gifted artist; he is a fantastic draughtsman, pencil is his preferred medium. Hours: Mon.-Fri., 9am-5pm & one hour before performances. Contact: call 252/985-5268 or at (www.ncwc.edu/Arts/Mims/).

Rutherfordton

Rutherford County Visual Artists Gallery, Rutherford County Visual Arts Center, 160 N. Main St., Rutherfordton. **Ongoing** - Featuring works by members of the Rutherford County Visual Artists Guild in a wide variety of media. Hours: Tue.-Sat., 10am-3pm and Fri. till 6:30pm. Contact: 828/288-5009, e-mail at (rcvartg@gmail.com) or at (www.rcvag.com).

Salisbury/Spencer

Throughout Salisbury & Spencer, Aug. 11, from 1-5pm - "Second Saturday Art Crawl," where more than 20 professional artists, studios and galleries offer visitors new art, special events, and activities. Spend the day and see great art, talk to artists, hear live music, and dine at local restaurants. Free admission to all events and activities. Maps are available at the Visitor Center in Salisbury and at all participating venues. Free parking available in all locations. For more info call 704/638-9887 or visit (www.rowanartcrawl.com).



Work by Terry Thirion

Waterworks Visual Arts Center, 123 E. Liberty St., Salisbury. **Through Aug. 11** - "Discerning Eye: From Realism to Abstraction". Figurative artist Scott Burdick (King, NC) travels extensively throughout the world to observe diverse cultures, costumes and customs, and captures the humanity of those subjects in his body of work "Beauty Across Cultures". Self-taught artist, Cassandra Gillens' (Beaufort, SC) paintings feature silhouette figures saturated with vivid colors and simplified forms. Born in Massachusetts, her earliest memories are drawing with colored chalks on the sidewalks of Roxbury. Artist Susan Lyon (King, NC) was inspired to take drawing classes after seeing a television show featuring Georgia O'Keefe. Her body of work "Seeing the Figure through Color and Form," depicts her true love of painting the figure. Painter and mixed media artist Terry Thirion's (Charlotte, NC) abstract body of work intrigues the viewer and invites them to discover the little surprises embedded in each piece. Encaustic artist Felicia van Bork (Davidson, NC) creates artwork that explores origin and evolution of consciousness. Her encaustic portraits featured in her body of work "Portraits Just In Time" use exquisite color and texture, drawn from observation, that result in spirit and energy. Admission: Free, donations appreciated. Hours: Mon.-Fri., 10am-5pm; Thur. till 7pm & Sat., 11am-3pm. Contact: 704/636-1882 or at (www.waterworks.org).

Seagrove Area

Museum of North Carolina Traditional Pottery, 122 E. Main St., Seagrove. **Ongoing** - The Museum organization was founded twenty-five years ago in Seagrove, and is dedicated to preserving and perpetuating the pottery tradition. We strive to impart to new generations the history of traditional pottery and an appreciation for its simple and elegant beauty. A display of area pottery is now offered in the old Seagrove grocery building. Hours: Mon.-Sat., 9:30am-3:30pm. Contact: 336/873-7887 or at (www.seagrovepotteryheritage.com).

The North Carolina Pottery Center, 233 East Avenue, Seagrove. **Aug. 17 - Oct. 27** - "The Collector's Eye, Series II: Seven Perspectives." A reception will be held on Aug. 17, from 5:30-7:30pm. The exhibit explores the state's pottery heritage through examples of pottery selected by seven women from their personal collections. Close to 140 objects will be displayed in the exhibit, including examples of historic and contemporary pottery made by some of North Carolina's finest potters. A full-color catalog including all of the exhibited pottery will be available for purchase. **Ongoing** - Featuring permanent and changing exhibits on the history of North Carolina pottery, "The North Carolina Pottery Tradition" and "Seagrove Area Pottery". The Center also offers information on activities, maps and information about the potteries located in the Seagrove area and across the state. A display of representative works from more than 90 area potteries is also

continued on Page 48