

NC Commercial Galleries

continued from Page 53

gallery currently represents national and regional contemporary artists including painters Karen Banker, Scott Boyle, and Sharon Dowell, ceramic artists Kimbrell Frazier, Erin Janow, and Raine Middleton, wood turner Paul Stafford, glass artist Jennifer Nauck, and fine art photographer Mary Whisonant. Works include oil, mixed media, and acrylic paintings, ceramics, exotic wood, photography, glass, and bronze. In addition watch local artists at work in the Art Mill, a colony of nine artist studios, located behind Gallery 317. Hours: Mon.-Fri., 10am-6pm & Sat., 10am-2pm or by appt. Contact: 1-888-558-2891 or at (www.gallery317.com).

Linville/Linville Falls Area



Work by Bill Brown

Anvil Arts Studio & Sculpture Gardens, Hwy. 221, Linville Falls. **Ongoing** - While in Linville Falls, be sure to come by and stroll through the gallery, studio, and sculpture gardens of artist Bill Brown. His works include contemporary sculpture, sculptural lighting, and paintings. You'll be drawn into each piece of art as it appeals to your understanding from a myriad of materials including steel, copper, bronze, and various patinas. Hours: Mon.-Fri., 9am-5pm should call ahead at 828-765-6226 or at (www.studiosculpture.com).

87 Ruffin Street Gallery, located next to the Old Hampton General Store and Barbeque, Hwy. 221 in Linville. **Ongoing** - The gallery features the work of local and regional folk artists, potters, figural wood carvers, glass artists and painters. This unique gallery also carries beautiful furniture handcrafted by local artists from local woods. The gallery has its own framing shop for all your picture framing needs. Whether you are looking for original artwork for you home or for a gift Ruffin Street gallery is the perfect destination. Hours: Mon.-Sat., 10am-5pm & Sun., 11am-5pm. Contact: 828/737-0420 or at (www.ruffinstreetartgallery.com)

Mars Hill

Tom Turner Porcelain, 381 Turner Lane, Mars Hill. **Ongoing** - Featuring wheel thrown and high fired porcelain art pottery by Tom Turner with classical glazes like copper red oxblood, oilspot, celadons, and ash glazes. Hours: by appt. Contact: 828/689-9430 or at (www.tomturnerporcelain.com).

Marshall

Firewalker Gallery, Main St., across from the Madison County courthouse, Marshall. **Ongoing** - The gallery features artists from Madison County and east Tenn. who work in a variety of mediums. Hours: Thur., Fri. & Sat., 10am-6pm and by appt. Contact: 828/649-0134 or at (www.firewalkergallery.com).

Mebane

Fine Art Carolina Gallery, 116 West Clay St., Mebane. **Ongoing** - The gallery offers traditional and contemporary art in various mediums. The gallery will also feature guest artists and offer art workshops in 2012. Owned and operated by artists featuring works by: Ali Givens, Jude Lobe, Celine Meador, Pat Scheible, and Pam Watts. Hours: Mon.-Sat., 11am-5pm. Contact: 919/455-5965 or at (<http://FineArtCarolina.com>).

Micaville

Crabtree Creek Art and Floral Gallery, 4161 E. Hwy 19-E, between Burnsville & Spruce Pine, in Micaville. **Ongoing** - A 2,400 sq. ft. gallery offering pottery, blown glass, paintings, stained glass, wood carvings and bowls, jewelry, handmade handbags, sweaters & hats, Christmas trees, ornaments and holiday decorations, metal sculptures and ironwork, handmade soaps and lotions, fragrances and candles, wildlife & floral photography, home accessories, lamps, handmade tables, chairs and home accents, silk floral creations and fresh floral arrangements, textile pieces, handmade baskets and local crafts from the western North

Carolina region. Also a complete garden center with blooming plants, hanging baskets, dish and herb gardens is located on property including landscape art, hardscape and fountains. Hours: Tue.-Sat., 10am-5pm. Contact: 828/675-0612 or at (www.crabtreecreekgallery.com).

Mooreville

Andre Christine Gallery & Sculpture Garden, 148 Ervin Road, (on the right above Lone Star Steak House), Mooreville. **Ongoing** - Featuring works by jewelry designers Dawn Vertrees, Margie & Frank Gravina, and Janet Burgess; bronze sculptures by Armand Gilanyi and wood sculptures by Robert Winkler. Plus works by on going sculptor in residence Dana Gingras and sculptor Michael Alfano. Hours: Tue.-Sat., 10am-5pm & Sun. by appt. Contact: 704/664-1164 or visit (www.AndreChristineGallery.com).

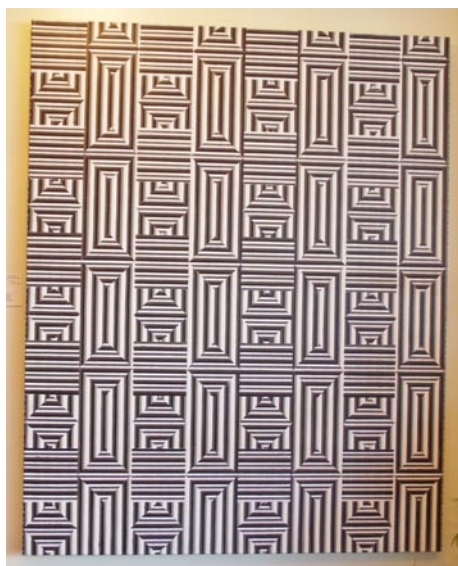
Morehead City

BluSail Gallery, Artists' School & Pottery Studio, 903 Arendell Street, downtown art district, Morehead City. **Ongoing** - The gallery represents and exhibits work by over 30 local artists. The Artists' School and Pottery Studio are working studios designed to educate and enhance local talent for children and adults of all ages and all levels of experience. Hours: Mon.-Sat., 10am-5:30 or by chance. Contact: 252/723-9516 or at (www.blu-sail.com).

Budding Artists, Ltd., 3000 Arendell Street, Unit 9, Morehead City. **Ongoing** - The gallery provides custom framing and artist liaisons for commissioned pieces. Hours: Mon.-Sat., 10am-6pm. Contact: 252/247-5111.

Carteret Contemporary Art, 1106 Arendell St., Morehead City. **Ongoing** - Featuring original paintings and sculpture from regional and national artists, and shows with gallery artists during spring and summer. Hours: Mon.-Fri., 10am- 5pm and Sat., 10am-4pm. Contact 252/726-4071 or at (www.twogalleries.net).

Morganton



Work by Lance Turner

Kalā - A Contemporary Craft Gallery, 100 W. Union Street, at the intersection of W. Union and S. Sterling Streets, across from the Historic Burke County Courthouse, Morganton. **Through Aug. 31** - Featuring the works of North Carolina painter, Lance Turner. Turner specializes in systematically rearranged grid paintings and in life size or larger process-based photorealistic portraits. The artist says of his paintings, "The portraits that I paint allow for me to relate ideas and are only the product of my experience. Therefore, they more accurately depict what I believe to be the essence of painting, which is self-reference. My paintings are about my thought process as I create fictional characters through the relationship of stylistic devices." **Ongoing** - Kalā is a retail contemporary craft gallery featuring hand-crafted art made in America that is affordable to everyday people. Representing over 100 local and regional artists as well as national artists, Kalā offers a wide range of works including pottery, jewelry, art glass, wood, metal and much more. Some of the local artists represented by Kalā include Valdese, NC, potter Hamilton Williams and five (5) painters from Signature Studio Artists of Morganton, NC. Hours: Mon.-Fri., 10am-6pm & Sat., 10am-5pm. Contact: 828/437-1806 at (www.kalagallery.com).

MESH Gallery, 114-B W. Union St., Morganton. **Through Aug. 23** - "Expression & Impression," featuring mixed media works by Lucy Folger & Suzie Rowland. Lucy Folger has exhibited in juried, single and 2-person shows throughout the region. A former member of the Asheville Gallery of Art she has shown in Sawtooth

Gallery in Winston Salem, the Asheville Art Museum, the Caldwell Arts Council, The Old Rock School in Valdese, NC & the Burke Arts Council to name a few. Suzie Rowland has studied at Penland and with the late Morganton painter Raymond Goodfellow. Aside from painting, Suzie has designed for textile firms and maintained a family operated pottery business producing an original line of lamp bases & accessories. **Ongoing** - We feature local and regional artists, host poetry readings, wine tastings and other events. We strive to offer something for everyone, from the progressive & urban to the traditional, folk and rural. Hours: Mon.-Fri., 9am-5pm & Sat., 10am-4pm. Contact: 828/437-1957, at (www.meshgallery.com) or at (www.downtownmorganton.com).

Nags Head

Seaside Art Gallery, 2716 Virginia Dare Trail South, Nags Head. **Ongoing** - Featuring works of local and contemporary artists, as well as a wonderful selection of art by such masters as Picasso, Chagall, Whistler, Icart, Renoir and many others. Sculpture, porcelain and art glass by Hummel, Staffordshire, Tiffany and others are represented. As well as a fine selection of estate jewelry. Since the early 1980's, a major feature of Seaside Art Gallery has been our large collection of original animation art by such studios as Disney, Warner Bros., Hanna-Barbera, United Features Ltd., and other animation studios. Hours: Mon.-Sat., 10am-5pm. Contact: 252/441-5418, 1-800/828-2444 or at (<http://www.seasideart.com/>).

New Bern

Carolina Creations Fine Art and Contemporary Craft Gallery, 317-A Pollock Street, New Bern. **Through Aug. 31** - "Red White and Blue," featuring paintings by New Bern artist, Janet Dixon. In 1990 Janet began experimenting with watercolors. She took a course at the Center for Creative Arts in Yorklyn, DE and has been painting nearly every day since. She now teaches art herself and has been doing so for a large part of her career. **Ongoing** - Featuring fine art and contemporary crafts including pottery, paintings, glass, sculpture, and wood by over 300 of the countries top artists. Hours: Mon.-Sat., 10am-6pm; Fri., till 8pm: & Sun. 11am-4pm. Contact: 252/633-4369 or at (www.carolinacreations.com).

New Bern ArtWorks & Company, located in Studio 323, "Home of Working Artisans" (formerly the historic Baxter's Jewelry Store), 323 Pollock Street, New Bern. **Through Aug. 9** - Featuring works by landscape painter Joanne Geisel. Most of Geisel's paintings reflect a moment in time where it is important to capture an immediate impression. She assess the composition, the values, the proportions and color, then she paints, all the while trying to maintain the initial feeling that drew her to paint the particular landscape, person or still life. **Ongoing** - A fine art gallery dedicated to promoting regional and national artists; bringing awareness and appreciation of fine art to the community through exhibits, shows, demonstrations and by providing fine art to established and new art lovers. We offer a diverse selection of styles, subject matter and mediums including paintings, pottery, ceramics, sculpture, photography, and jewelry. Hours: Mon.-Fri. 10am-6pm & Sat., 10am -5pm. Contact: 252/634-9002 or at (www.newbernartworks.com).

The Art Gallery @ Le Bistro & Fine Dining, 3402-B Trent Road, New Bern. **Ongoing** - Featuring works by local artists who explore a wide range of media including Gayle George, Nell Maha, John Dreas, Nada Behr, Doris Walker, Barbara Cornish, B. Chris Munyan, Douglas Rowe, Tess Luper, James King, William K. Henson, John Mitchell, Joan Russell, Betty Brown, Blain Kruger and Dan Wilson. Come in for lunch or dinner, have a glass of wine and peruse the work of these fine artists. Hours: Tue.-Wed., 10am-5pm; Thur.-Sat., 10am-8pm; and Sun., 9am-2pm. Contact: 252/637-7331 or at (<http://www.lebistrofinediningandtheartgallery.com>).

Ocracoke Island

Village Craftsmen, 170 Howard Street, Ocracoke Island. **Ongoing** - We feature pottery, glass, jewelry, kitchen items, musical instruments, wrought iron, baskets, bells, boxes, soaps, accessories, clothes, games, kaleidoscopes, lawn sprinklers, lamps & lampshades, prints, tin ware, pewter items, tiles and much more - all made by American artists. Hours: Mon.-Sat., 10am-4pm & Sun., 10am-2pm. Contact: 252-928-5541 or at (www.villagecraftsmen.com).

Old Fort

Turtle Island Pottery, 2782 Bat Cave Road, Old Fort. **Ongoing** - Featuring handmade pottery by Maggie and Freeman Jones, who cre-

ate one of a kind, functional, decorative stone-ware items. From cups to umbrella stands, mirror frames and clocks. Sculptural and inspired by nature, many forms are reminiscent of antique pottery from the arts and crafts movement and art nouveau styles. Hours: Showroom open most Saturdays, call ahead for any day of the week. Contact: 828/669-2713 or at (www.Turtleislandpottery.com).

Pinehurst - Southern Pines Area

Artist Alley, 167 E. New Hampshire Ave., Southern Pines. **Ongoing** - Featuring a wide variety of affordable artwork and fine crafts made exclusively here in North Carolina. Hours: Mon.-Sat., 11am-5pm. Contact: 910/692-6077.

Broadhurst Gallery, 2212 Midland Rd., Pinehurst. **Ongoing** - Featuring works by regional, national and international artists. Hours: Tue.-Fri., 11am-5pm & Sat., 1-4pm. Contact: 910/295-4817 or at (www.broadhurstgallery.com).

Hollyhocks Art Gallery, 905 Linden Rd., one mile from Pinehurst next to Elliott's restaurant, Pinehurst. **Ongoing** - Featuring original work by award winning local artists Jane Casnelie, Diane Kraudelt, Irene McFarland, Paula Montgomery, and Robert Gera. Offering a wide range of work from contemporary to traditional, the gallery includes portraiture, vibrant Tuscan scenes, palpable pet portraits, beautiful florals and more, in a wide variety of mediums including oils, acrylics, pastels and unusual black and white washes. Hours: Mon.-Sat., 10am-9:30pm. Contact: 910/255-0665 or at (www.Hollyhock-sArtGallery.com).

Midland Crafters, 2220 Midland Rd., Pinehurst. **Ongoing** - Featuring the finest in American traditional and contemporary hand crafts. The gallery carries something for everyone. Hours: Mon.-Sat., 9:30am-5:30pm & Sun., 2-5pm. Contact: 910/295-6156.

Pittsboro

Davenport and Winkleperry, 18 E. Salisbury St., Suite A, Pittsboro. **Ongoing** - Imagine a space filled with art, designer toys, books, and an in-house seamstress. Impossible? Take a turn about downtown Pittsboro and you will stumble upon Davenport & Winkleperry, a gallery and retail space that offers all those extraordinary things along with other amusing oddities for your purchase, most with a hint of the Victorian aesthetic. Tucked on shelves you will find action figures of Oscar Wilde, tomes of Jules Verne, vintage gas masks, one-of-a-kind jewelry, fantastical sweets and more. Even the mannequins are a treat to look at, dressed finely in the waistcoats and bustles skirts made by the in-house seamstress. The art on the walls changes every month showcasing the works of creative people from around the globe. Hours: Tue.-Sat., 11am-7pm. Contact: 919/533-6178 or at (www.davenportandwinkleperry.com).

Liquid Ambar Gallery, 80 Hillsborough Street, Pittsboro. **Ongoing** - The retail store that carries one-of-a-kind artwork and we will have featured artists each month in the front gallery. Hours: Tue.-Fri., 10:30am-5:30pm; Sat., 9:30am-5:30pm; and Sun. 11am-4pm. Contact: 919/542-1773.

The Joyful Jewel, 44-A Hillsborough2 Street, Pittsboro. **Ongoing** - Featuring local art fresh from the Heart. Mariah Wheeler is shoppe keeper at this gallery/gift store in downtown Pittsboro. We feature exquisite art and gifts from over ninety local artists, with a price range to suit your budget. You will find baskets, books, jewelry, cards, paintings, photography, sculpture, from glass, wood, clay, fiber, and more. On Fri. evenings the gallery features local musicians, poets, and other performance art with a wide array of talent. Hours: Mon.-Sat., 10:30am-5:30pm & Sun., noon-4pm. Contact: 919/883-2775 or at (www.joyfuljewel.com).

Raleigh Area

Adam Cave Fine Art, 115 1/2 East Hargett St., half a block from Moore Square, Raleigh. **Ongoing** - Representing a select group of regional and nationally known artists, including Joseph Cave, David Hewson, Stephen Aubuchon, Wayne Taylor, and Donald Furst. The gallery will also be introducing some new, young talent to the area, including Massachusetts painter Jennifer O'Connell. Hours: Tue.-Sat., 11am-5pm & by appt. Contact: 919/272-5958 or at (www.adamcavefineart.com).

Artcraft Gallery, 406 W Hillsborough Street, Raleigh. **Ongoing** - Funky, functional and fine art by several co-op artists. Hours: Mon.-Thur., 9am-5pm; Fri., 9am-1pm & 1st Fri., 6pm-midnight. Contact: 919/832-5058 or at (www.artcraftsignco.com).

continued on Page 55