

continued from Page 30

& Visual Studies, Duke University.

*All About America: Photographs by Burk Uzzle* is accompanied by a fully-illustrated, 80-page exhibition catalogue with an essay by the curator, available for purchase at the Ackland Museum Store.

This exhibition has been made possible in part through the generosity of the William R. Kenan Jr. Charitable Trust.

*All About America: Photographs by Burk Uzzle* is presented in coordination

with two other area exhibitions exploring the photographer's work: *Burk Uzzle: Southern Landscapes* (Nasher Museum of Art at Duke University, on view through Sept. 18, 2016) and *Burk Uzzle: American Chronicle* (North Carolina Museum of Art, on view through Sept. 25, 2016).

For further information check our NC Institutional Gallery listings, call the Museum at 919/966-5736 or visit ([www.ackland.org](http://www.ackland.org)).

## FRANK Gallery in Chapel Hill, NC, Offers Two New Exhibits

FRANK Gallery in Chapel Hill, NC, will present *All That Glitters*, featuring works by Gordon Jameson, Sheila Stillman, and the duo Samantha Henneke and Bruce Gholson of Bulldog Pottery, and *African American Quilt Circle, Durham, NC*, featuring works by members from the Triangle, the Eastern US, and even Central America, on view from Aug. 9 - Sept. 4, 2016, with a reception on Aug. 12, from 6-9pm. Artists' Talks will be given on Aug. 18, beginning at 6pm.

August at FRANK offers two exciting and unique exhibitions to help you forget the summer heat! *All That Glitters*, showcases four artists who use iridescence, texture, and a variety of media -from pottery to oil painting to jewelry - to dazzle and entice both art lovers and collectors. Our Michael and Laura Brader-Araje Community Outreach Gallery features work from the African American Quilt Circle, an award-winning group of fiber artists committed to preserving the heritage of African-American quilting.

The shimmering texture and golden hues of the diverse work by artists in *All That Glitters* pairs perfectly with the summer heat! The exhibit spotlights the artists Gordon Jameson, Sheila Stillman, and the duo Samantha Henneke and Bruce Gholson of Bulldog Pottery, and features artwork which employs luminous surfaces and striking intricacies that are much more than meet the eye.



Work by Bruce Gholson

Gordon Jameson's polychrome oil paintings reflect musings on natural and cosmic processes. His paintings for this exhibition offer a glimpse through the gold shimmer on the surface of a pond. He invites the viewer to plunge beneath the water and into a meditation on the nature of small and great things.

Sheila Stillman, from her studio in Durham, crafts jewelry in 22 karat gold, Argentium silver, and fine gemstones. She is highly skilled in the ancient technique of granulation, a delicate and complex process which makes for jewelry that is far more intricate than it might appear at first glance.

The highly collectible pair, Samantha Henneke and Bruce Gholson, share a long-time love of ceramics and opened their studio Bulldog Pottery, named for their two beloved canines, in 2000 in



Work by Gordon Jameson

Seagrove, NC. Inspired by natural aesthetics, particularly the flora and fauna around Seagrove, the pair create ceramics that are textured, sophisticated, and dynamic with the use of different glazes, designs, and ways of manipulating their clay. Together, these artists showcase the dazzle and radiance of natural forms, and wow the viewer with the complexities of their surfaces.

For the month of August, the Michael and Laura Brader-Araje Community Outreach Gallery will feature the work of local artists in the African American Quilt Circle (AAQC) in Durham, NC. The quilts made by the AAQC feature traditional block-quilting, original designs, and fiber art, quilted by hand as well as by machine. The AAQC is committed to preserving the tradition of quilting in the black community and takes seriously its dedication to community education and outreach.

Originally founded in Durham in 1998 by four African American women quilters, the AAQC now encompasses members from the Triangle, the Eastern US, and even Central America. The AAQC is an award-winning group of quilters that meets monthly in Durham to share instruction and resources on quilting as well as support for new members. The AAQC is very involved in community outreach in the Triangle area: they donate quilts to community members (including premature babies at UNC Hospitals) and exhibit their work as artists at cultural festivals around North Carolina. Quilts and fiber art made by members of the AAQC has been published in quilting magazines around the world, featured on local television shows, and has been showed in local, regional, and international quilt exhibitions.

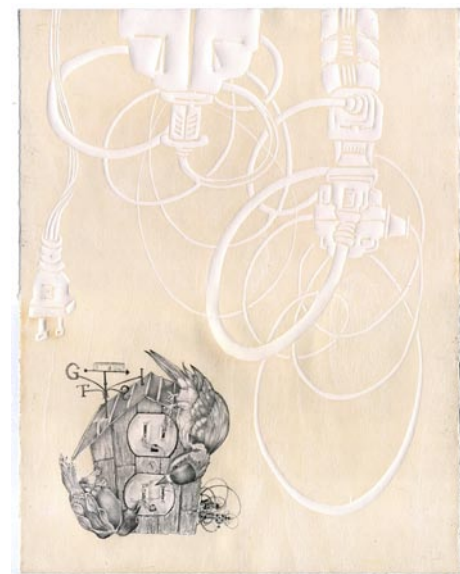
FRANK gallery is a 501(c)(3) non-profit operated by member artists of the Franklin Street Arts Collective, with support from community leaders and art lovers.

The mission of the Franklin Street Arts Collective is to support the arts community of Chapel Hill and the region, strengthen community appreciation of the arts through educational outreach, and promote Chapel Hill and North Carolina as a major arts destination. FRANK offers workshops, salons, and innovative programs that reach out to diverse groups within the community.

For further information check our NC Institutional Gallery listings or visit ([www.frankisart.com](http://www.frankisart.com)).

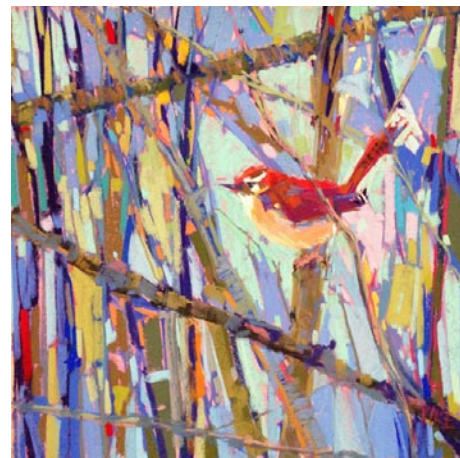
## Some Exhibits That Are Still On View

Our policy at *Carolina Arts* is to present a press release about an exhibit only once and then go on, but many major exhibits are on view for months. This is our effort to remind you of some of them.



Work by Meghan O'Connor

RIVERWORKS Gallery in Greenville, SC, is presenting *Critters*, created by sculptor, Anne Lemanski, printmaker, Meghan O'Connor, and photographer, Alice Sebrell, on view through Aug. 21, 2016. A reception will be held on Aug. 5, from 6-9pm. Trapped in the surreal, forced to adapt to human-made forces yet retaining our idealization of cute, maybe even warm and fuzzy, these are the critters. *Critters* offers fetching, humorous images with a sad and frightening commentary on human power over nature. Each artist questions the relationship of human kind with the natural world and each demonstrates the possibility of our action and inaction on the future of the natural world. For further information check our SC Institutional Gallery listings, visit ([www.gvltec.edu/riverworks](http://www.gvltec.edu/riverworks)) or e-mail to ([fleming.markel@gvltec.edu](mailto:fleming.markel@gvltec.edu)).



Work by Dianne Pike

The Hickory Museum of Art in Hickory, NC, is presenting *On Common Ground: Pastel Paintings from the Mountains to the Sea*, juried by Elizabeth Mowry, featuring works from the 2016 *NC Statewide Juried Pastel Exhibition*, on view in the Coe Gallery, through Aug. 21, 2016. The 2016 *North Carolina Statewide Juried Pastel Exhibition*, is a collaboration of the Appalachian Pastel Society, the Pastel Society of North Carolina and the Piedmont Pastel Society. The mission of the annual juried exhibition is to inspire artists, enhance the public's appreciation for the lasting value and beauty of medium soft pastels and to establish North Carolina as an emerging cultural market. The 2016 show is being hosted by the Appalachian Pastel Society. For further information check our NC Institutional Gallery listings, call the Museum at 828/327-8576 or visit ([www.HickoryArt.org](http://www.HickoryArt.org)).



Work by Mark Whitley

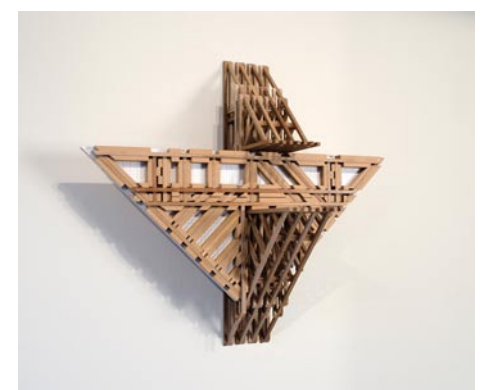
Groveswood Gallery in Asheville, NC, will present *Groveswood Rocks!*, a show-

case of artisan made rocking chairs, on view through Aug. 28, 2016. Art meets function in *Groveswood Rocks!* - a showcase of artisan made rocking chairs by 11 American woodworkers, including 6 from North Carolina. Rocker styles will range from traditional to contemporary and reflect the creative diversity and unique personality of each maker. The exhibition was curated by Russell Gale, who began managing Groveswood Gallery in 2015. Participating artists include: Fatie Atkinson, Brian Brace, Curtis Buchanan, Alan Daigre, Brian Fireman, Joe Godfrey, Andy McFate, Libby Schrum, Leslie Webb, Seth Weizenecker, and Mark Whitley. For further information check our NC Commercial Gallery listings, call the gallery at 828/253-7651 or visit ([www.groveswood.com](http://www.groveswood.com)).



Work by Dr. Fred McElveen

City Art Gallery in Columbia, SC, will present *McElveen Clan: Photographs & Images by Fred McElveen, Sandy McElveen, and Clay McElveen*, on view through Sept. 3, 2016. Dr. Fred McElveen is a retired Columbia-based physician with a specialty in dermatology, but he is also an award-winning photographer. Sandy McElveen is a South Carolina native, who now lives in Landrum, SC. He likes to say that he "grew up in a darkroom". He spent many hours learning the fundamentals of photography under the close tutelage of his father, Fred McElveen. Clay McElveen is a native of Columbia, SC, who got his first inspirations for photography from his father Fred McElveen, helping him in the darkroom as a child. With his vivid imagination and desire for it to come to life, Clay began working with film photography and capturing the character and personalities of toy miniatures in still life scenes. For more info check our SC Commercial Gallery listings, call Wendy Wells, Gallery Director, City Art, at 803/252-3613 or e-mail to ([ww@cityartonline.com](mailto:ww@cityartonline.com)).



Work by Matthew Steele

Jerald Melberg Gallery in Charlotte, NC, is presenting *Two to Watch*, featuring works by sculptor Matthew Steele and painter Nicholas Napoletano, both of Charlotte, on view through Sept. 10, 2016. *Two to Watch* aims to celebrate these two young Charlotte artists and introduce them to our collectors. Melberg decided to showcase the work of Steele and Napoletano after making numerous studio visits and considering the work of over fifty artists. He found that the superior craftsmanship, as well as the intriguing visual components found in both artists' work, is certainly worthy of recognition. For further information check our NC Commercial Gallery listing or call the gallery at 704/365-3000. To view selected paintings from the exhibition online, visit the gallery's web site at ([www.jeraldmelberg.com](http://www.jeraldmelberg.com)).

The Gibbes Museum of Art in Charleston, SC, is presenting *Beyond Catfish Row: The Art of Porgy and Bess*, on view through Oct. 9, 2016, which presents interpretations of *Porgy and Bess* created by visual artists through the years, including works by George Biddle, the original illustrator of the *Porgy and Bess* libretto in 1935, and

continued on Page 32

Check us out at ([www.carolinaarts.com](http://www.carolinaarts.com)) or e-mail to ([info@carolinaarts.com](mailto:info@carolinaarts.com))

The deadline each month to submit articles, photos and ads is the 24th of the month prior to the next issue. This will be Aug. 24th for the September 2016 issue and Sept. 24 for the October 2016 issue.

After that, it's too late unless your exhibit runs into the next month. But don't wait for the last minute - send your info now.

And where do you send that info?  
E-mail to ([info@carolinaarts.com](mailto:info@carolinaarts.com)).