

City of North Charleston (SC) Features Works by Ginny Versteegen and Faye Sullivan

The City of North Charleston's Cultural Arts Department will present two solo exhibits including: *Journeys*, featuring paintings by Ginny Versteegen, and *Reflections*, featuring paintings by Faye Sullivan, both on view from Sept. 1 - 30, 2011, in the North Charleston City Gallery, located in the Charleston Area Convention Center in North Charleston, SC. A reception will be held for both artists on Sept. 1, from 5-7pm.



Work by Ginny Versteegen

Ginny Versteegen's exhibit, *Journeys*, consists of her latest oil and watercolor paintings which encompass personal journeys, artistic journeys, as well as the artist's geographical journeys. Recent trips to Tuscany and Umbria have inspired many of the paintings in the exhibit. Local excursions throughout the Lowcountry and Upstate also contribute to the theme.

Versteegen's fascination with color and light are both evident in the inspired collection of paintings. Done "en plein air," these works reflect the sunlit landscapes and windows of the world.

Versteegen taught art in private and public schools throughout her life. She received a degree in Art Education through Edinboro University of Pennsylvania and continued her education in fine arts at Winthrop University in Rock Hill, SC, Queens College in Charlotte, NC, and the University of Oviedo in Spain.

Having resided in Holland, Spain, and Brazil, Versteegen's work exhibits an international flair. Her paintings have received awards in many shows locally and

throughout the United States. She currently co-manages the Charleston Artist Guild Gallery in downtown Charleston, SC, is a contributing member of the I'On Guild, and previously served on the board of the Mount Pleasant Artist Guild.



Work by Faye Sullivan

The oil paintings in Faye Sullivan's exhibit, *Reflections*, invite the public to experience the openness and expanse of the Lowcountry through the seascapes and landscapes which surround them.

"Water is the ultimate chameleon," says the artist. "It reflects the clouds, time of day, wind, sky, and all of the many things which surround it. It is this reflective quality which is most helpful when repeating colors to unify the scene."

Sullivan first worked in pastels because she was drawn to the softness of the medium. She now paints with that softness using oils, choosing a smooth canvas and applying the paint thinly with soft edges. These techniques help set a mood of peacefulness and solitude and make her work easily recognizable.

Sullivan is a graduate of East Carolina University in Greenville, NC, with a BFA and MFA in Art. She taught art for 39 years at the middle and high school level before retiring in the Lowcountry. She has won numerous art awards and her work is displayed in homes and offices throughout the country and abroad. She currently exhibits at the Charleston Artist Guild Gallery in downtown Charleston and is a member of three local guilds.

For further information check our SC Institutional Gallery listings, call the Cultural Arts Department at 843/740-5854 or visit (www.northcharleston.org).

Charleston Artist Guild in Charleston, SC, Offers Works by Maureen Simpson

The Charleston Artist Guild in Charleston, SC, will present the exhibit, *SQUARIA: The Liberation of an Ordinary Form*, featuring works by Maureen Simpson in the Guild Gallery, from Sept. 1 - 30, 2011. A reception will be held on Sept. 2, from 5-8pm.

SQUARIA is a series of works combining acrylic painting and sculptural elements to explore a common form experiencing mid-life crisis.

Simpson states, "My work is about creating an abstract environment of color, movement and dimension where simple forms can live and breathe. The idea that we can always learn more, experience more-become more than we are, is a constant theme for me."

Simpson earned an AA from Joliet Jr College where several pieces of her work remain in the school's permanent collection. She spent several years working in graphic design and sign making. After moving to the Charleston area in 2005, she then returned to her fine art roots.

Simpson hails from Joliet, IL, an industrial city, where the hands of the builder and the spirit of the artist are equally treasured. This community rich in remarkable architecture and public art greatly influenced her and she honors this in her work today.

For further information check our SC Institutional Gallery listings, call the Guild at 843/722-2454 or visit (www.charlestonartistguild.com).

Editorial Commentary

continued from Page 4 / [back to Page 4](#)

It gave me a big laugh and I thought - wishful thinking by some people. It's a basic problem that we have had during our transition from a printed paper to one found online. A lot of our old readers are lost and haven't found us yet.

People send me stuff like this to get me fired up, but it just gave me that laugh. Earlier that morning I had just checked our downloads for August and we were over the 47,000 mark - in August.

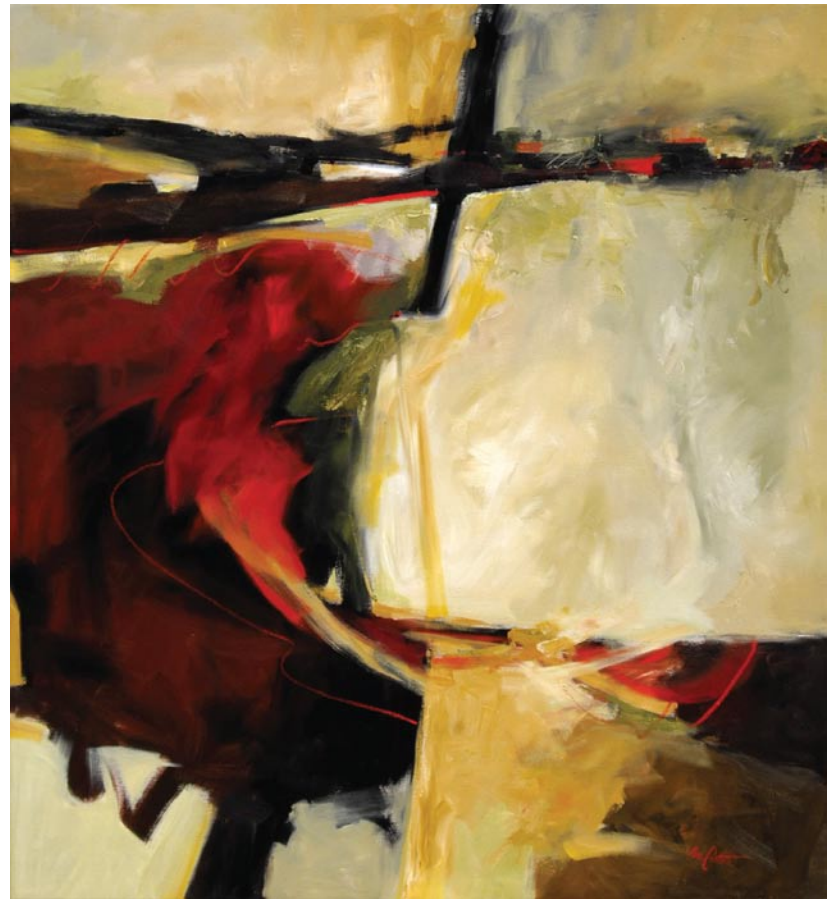
An average of 50,000 people seem to know we are still alive and kicking each month and still serving up the most coverage of the visual arts scene in the Carolinas,

so what's not to laugh about?

Wim Roefs of if ART Gallery in Columbia is the sponsor of this exhibit and author of the catalog, but I'm a little confused since Roefs is also the head of 701 Center for Contemporary Art in Columbia and the Center has been buying ads with us since our transition to an online paper. In fact, they have an ad in this issue of our "defunct" paper.

I figure Roefs got some bad information from some folks who wish we were defunct when he was writing this catalog and he has a lot of plates to keep spinning in the air. So,

continued on Page 10



Intention
Oil on Canvas, 72 x 66 inches

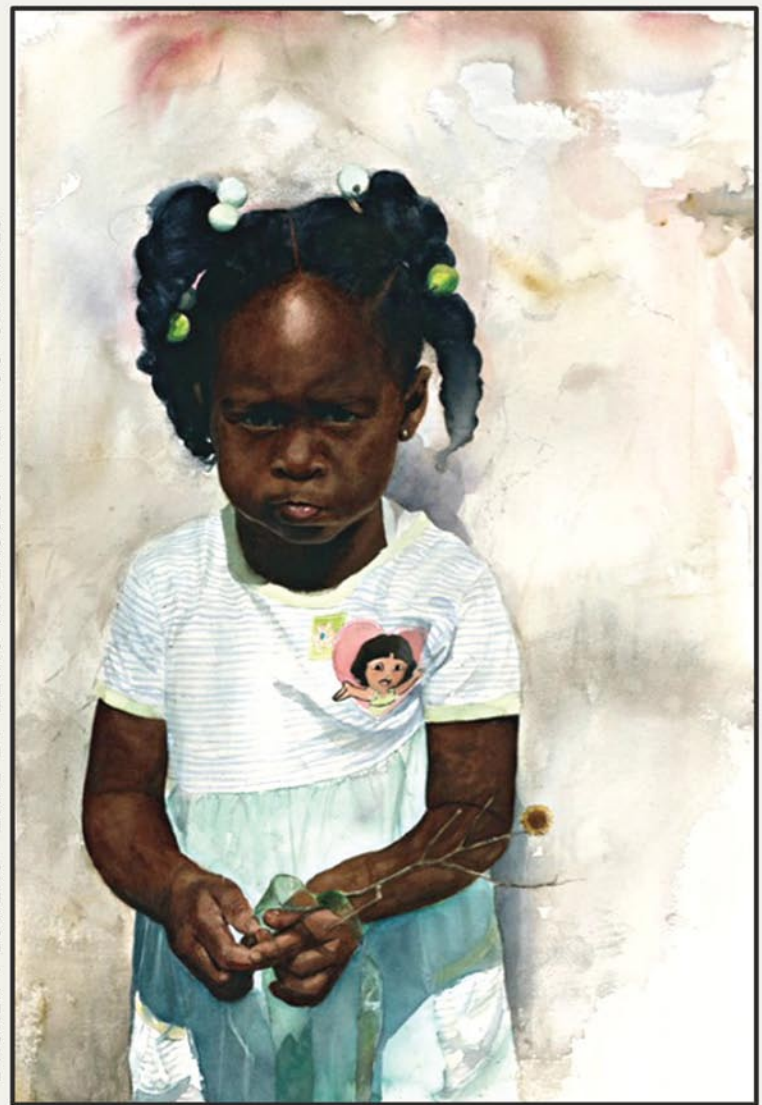
Eva Carter

Plan a visit to the new Downtown Studio for a private showing of latest works.

New Downtown Studio
6 Gillon Street, Suite 8 (second floor)
Charleston, SC 29401
Just north of the Old Exchange Building

By Appointment Only
Please call (843) 478-2522
www.EvaCarterGallery.com

WELLS GALLERY



"BROKEN FLOWERS" EARL B. LEWIS WATERCOLOR 42 X 30 UNFRAMED

VISIT OUR TWO LOCATIONS

125 MEETING STREET CHARLESTON, SC 29401 (843) 853.3233
ONE SANCTUARY BEACH DR. KIAWAH ISLAND, SC 29455 (843) 576.1290
(IN THE SANCTUARY HOTEL)

WWW.WELLSGALLERY.COM