

# Gallery C in Raleigh, NC

continued from Page 47

Peace Street in Blount Street Commons and there is plenty of free parking. For further information check our NC

Commercial Gallery listings, call the gallery at 919/828-3165 or visit ([www.galleryc.net](http://www.galleryc.net)).

## Wake Forest Guild of Artists in Wake Forest, NC, Offer Weekend Tour - Sept. 7 & 8, 2013

The Wake Forest Guild of Artists, in Wake Forest, NC, is pleased to announce their 18th Annual Tour of Artists to be held Saturday, Sept. 7, from 10am-6pm and Sunday, Sept. 8, from 1-6pm. Galleries in downtown Wake Forest and studios in various locations around town will be open. Artists will be in attendance at the galleries and studios to give demonstrations and to talk about their art.

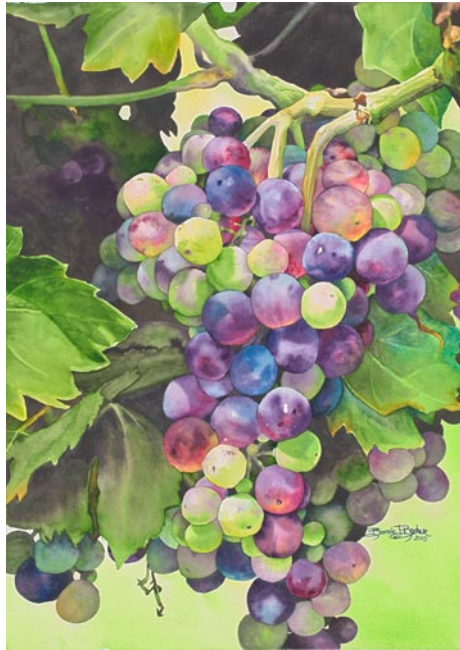
The Wake Forest Guild of Artists is comprised of individuals who work in a wide variety of media, including acrylic, oil, and watercolor painting; drawing and pastels; clay arts; photography; fiber, metal, and jewelry arts; glass; and wood. This year's Tour of Artists will feature more than 25 artists in the downtown galleries and remote studios.



Work by Mary Margaret Steele

"Wake Forest prides itself on its artist-friendly atmosphere," stated Beth Massey, President of the Wake Forest Guild of Artists. Massey is the owner of the Wake Forest Art & Frame Shop, which is Wake Forest's 2013 Small Business of the Year. "Because the town of Wake Forest supports the arts so enthusiastically, we have been able to expand participation in this year's Tour of Artists 125% by combining the downtown galleries and studios with those in other locations around town."

Maps of the Tour of Artists will be



Work by Bonnie Becker

available at the Wake Forest Art & Frame Shop (139 S White St.), at all other galleries in downtown Wake Forest, and on the Guild's web site at ([www.WakeForestGuild.com](http://www.WakeForestGuild.com)). The galleries and studios are open to the public, and admission is free.

"We encourage art enthusiasts of all ages and interests to explore Wake Forest and to discover our extraordinary community of art and artists," Massey added. "The Tour of Artists is really all about the process. People can witness first hand a large and diverse group of artists at work utilizing varying techniques, mediums, equipment and styles. So if you are looking for art or inspiration, curious about how it's done, or wanting to try it for yourself, the Tour of Artists has something for everyone!"

For further information check our NC Commercial Gallery listings, call Beth Massey at 919/562-1688 or e-mail to ([beth@wakeforestframeshop.com](mailto:beth@wakeforestframeshop.com)).

# NC Institutional Galleries

## Aberdeen

**The Exchange Street Gallery**, 129 Exchange Street, in the old Aberdeen Rockfish Railroad storage terminal, Aberdeen. **Ongoing** - The Artist's League of the Sandhills currently houses 35 artists-in-residence studios and offers classes by local professional artists and workshops by nationally known artists. Hours: Mon.-Sat., noon-3pm. Contact: 910/944-3979, or at ([www.artistleague.org](http://www.artistleague.org)).

## Albemarle

**Falling Rivers Gallery**, 119 West Main St., next to Starnes jewelers, Albemarle. **Sept. 21 - 28** - "Celebration of Clay Show and Sale". A reception will be held on Sept. 21, from 5-8pm, for refreshments and a first look at the pottery and sculptural work of North Carolina artists. In keeping with our theme of "The Studio Experience" you will be treated to the work of established studio potters as well as that of artists new to clay. There is even an "Emerging Artist" section where the clay work from our children's workshops will be shown. Artists will be on hand to answer your questions and explain their work. **Ongoing** - The gallery is a cooperative venue of the Stanly Arts Guild. Member staffed, this gallery offers the very best in local art and crafts including oil and watercolor, photography, pottery and ceramic art, jewelry, native American art, gourd sculpture and much more. Hours: Tue.-Fri., 10am-5pm; Thur. till 6:30pm & Sat., 10am-4pm. Contact: 704/983-4278 or at ([www.fallingriversgallery.com](http://www.fallingriversgallery.com)).

## Alamance County

**BAL Gallery**, Holly Hill Mall and Business Center, 309 Huffman Mill Rd., Exit 141 off of I85/140, Burlington. **Ongoing** - Since the beginning of Burlington Artists League in 1972, we have grown to represent many local artists in our immediate area. BAL's express purpose is to promote and elevate the area artists and their fine art spirit in Burlington, NC, and surrounding areas, thereby creating outlets for the artists and encouraging their continuing efforts to improve and create more art work. Along with wall art and bin reproductions, the BAL Artists Gallery also includes 3-D art such as sculptures and pottery. Hours: Mon.-Fri., noon-8pm; Sat., 10am-9pm, & Sun. for special events. Contact: 336-584-3005 or at (<http://balartists.com/joomla/>).

**1873 Capt. James & Emma Holt White House**, 213 South Main Street, 2 1/2 blocks off I85/40, exit#147, Graham. Home of the Alamance County Arts Council. **Ongoing** - We are committed to shaping the cultural identity of Alamance County by making art a tangible presence in the lives of its citizens. We strive to enhance the quality of life by engaging people in a diverse array of art through the delivery of programming and education, and through the provision of facilities, advocacy, promotion, and funding. **Ongoing** - Picasso's Gift Shop, located in the Captain White House, promises unique finds of local, regional, and international art. The beautiful arts and craft items sold in the store help support the artist in the community. Featuring a wide variety of art, pottery and glass. Admission: free. Hours: Mon.-

Sat., 9am-5pm. Contact: 336/226-4495 or at ([www.artsalamance.com](http://www.artsalamance.com)).

## Asheboro

**Sara Smith Self Gallery**, W.H. Moring, Jr. Arts Center, 123 Sunset Avenue, Asheboro. **Sept. 3 - 27** - "Becky Kates". A reception will be held on Sept. 3, starting at 5:30pm. Hours: Mon.-Fri., 10am-5pm & Sat., 10am-2pm. Contact: 336/629-0399 or at ([www.randolphartsguild.com](http://www.randolphartsguild.com)).

## Asheville Area

**Asheville River Arts District**, Asheville. **Aug. 2, 5-8pm** - "First Friday at Five". The galleries, studios and artists of the Asheville River Arts District invite the public to come view the art in this festive venue. Contact: 828/768-0246.

**Asheville Art Museum**, 2 South Pack Square at Pack Place, Asheville. **Through Sept. 1** - "A Sense of Balance: The Sculpture of Stoney Lamar." William Stoney Lamar (1951 - ) has contributed exceptional skill and vision to the world of wood turning for over 25 years. Lamar attended the University of North Carolina at Chapel Hill for a short period before leaving and working as a conscientious objector to the Vietnam War for two years. He later attended the University of North Carolina at Asheville followed by Appalachian State University, where he graduated in 1979 with a B.S. in Industrial Arts. It was not until the mid-1980s that Lamar began to work on a lathe and fully explore its utility in realizing his own artistry. **Through Oct. 27** - "Art After Dark". For much of history art was created by the light of day. Artists' studios were designed with large skylights facing north to take advantage of the most constant source of light. In the late 19th century gas light, and later the electric light, allowed enough brightness for artists to work successfully with an artificial light source. The exhibit features the images of six artists - three photographers and three painters - whose works were either created during the darkest hours of the day utilizing artificial light, or use the night as inspiration for creating dream-like images. Artists in this exhibition include Steve Fitch, Yvonne Jacqueline, Xavier Nuez, Matthew Pillsbury, Robert Yarber and John Zurier. **Through Jan. 19, 2014** - "Lasting Gifts". Celebrating the Asheville Art Museum's Black Mountain College (BMC) Collection, Lasting Gifts features a selection of art works from a wide array of students and teachers who attended the legendary Black Mountain College. This progressive liberal arts college, which operated from 1933 - 1957 in Black Mountain, North Carolina, welcomed and nurtured a group of creative individuals who have made significant contributions to American art and culture. Josef Albers, Anni Albers, Robert Rauschenberg, John Cage, Merce Cunningham, Ruth Asawa and Buckminster Fuller all studied or taught at Black Mountain College. The school endeavored to operate democratically, with everyone contributing to keep the small college community running. While Black Mountain College did not espouse a particular ideology or specialize in one artistic medium or technique, a focus on learning through experience and experimentation was constant. Lasting Gifts is an inclusive selection of works by Black Mountain College artists: a lithograph by the Bauhaus titan Josef Albers shares space with the work of lesser-known artists like painter Tom Field, ceramicist Karen Karnes, and others who produced exquisite work during their time at the college and throughout their careers. Admission: Yes. Hours: Tue.-Sat., 10am-5pm; Fri. till 8pm & Sun., 1-5pm. Contact: 828/253-3227 or at ([www.ashevilleart.org](http://www.ashevilleart.org)).

**Asheville Art Museum**, 2 South Pack Square at Pack Place, Asheville. **Through Sept. 1** - "A Sense of Balance: The Sculpture of Stoney Lamar." William Stoney Lamar (1951 - ) has contributed exceptional skill and vision to the world of wood turning for over 25 years. Lamar attended the University of North Carolina at Chapel Hill for a short period before leaving and working as a conscientious objector to the Vietnam War for two years. He later attended the University of North Carolina at Asheville followed by Appalachian State University, where he graduated in 1979 with a B.S. in Industrial Arts. It was not until the mid-1980s that Lamar began to work on a lathe and fully explore its utility in realizing his own artistry. **Through Oct. 27** - "Art After Dark". For much of history art was created by the light of day. Artists' studios were designed with large skylights facing north to take advantage of the most constant source of light. In the late 19th century gas light, and later the electric light, allowed enough brightness for artists to work successfully with an artificial light source. The exhibit features the images of six artists - three photographers and three painters - whose works were either created during the darkest hours of the day utilizing artificial light, or use the night as inspiration for creating dream-like images. Artists in this exhibition include Steve Fitch, Yvonne Jacqueline, Xavier Nuez, Matthew Pillsbury, Robert Yarber and John Zurier. **Through Jan. 19, 2014** - "Lasting Gifts". Celebrating the Asheville Art Museum's Black Mountain College (BMC) Collection, Lasting Gifts features a selection of art works from a wide array of students and teachers who attended the legendary Black Mountain College. This progressive liberal arts college, which operated from 1933 - 1957 in Black Mountain, North Carolina, welcomed and nurtured a group of creative individuals who have made significant contributions to American art and culture. Josef Albers, Anni Albers, Robert Rauschenberg, John Cage, Merce Cunningham, Ruth Asawa and Buckminster Fuller all studied or taught at Black Mountain College. The school endeavored to operate democratically, with everyone contributing to keep the small college community running. While Black Mountain College did not espouse a particular ideology or specialize in one artistic medium or technique, a focus on learning through experience and experimentation was constant. Lasting Gifts is an inclusive selection of works by Black Mountain College artists: a lithograph by the Bauhaus titan Josef Albers shares space with the work of lesser-known artists like painter Tom Field, ceramicist Karen Karnes, and others who produced exquisite work during their time at the college and throughout their careers. Admission: Yes. Hours: Tue.-Sat., 10am-5pm; Fri. till 8pm & Sun., 1-5pm. Contact: 828/253-3227 or at ([www.ashevilleart.org](http://www.ashevilleart.org)).



Work by Olga Michelson

**Asheville Gallery of Art, Ltd.**, 16 College Street, Asheville. **Sept. 1 - 30** - "Verity of Genre," featuring oil paintings on canvas by Olga Michelson. A reception will be held on Sept. 6, from 5-8pm. **Oct. 19. from 2-5pm** - "25th Anniversary Celebration." Local Asheville musician Chris Rhodes will be playing and refreshments will be provided. **Ongoing** - Featuring original works of art by 28 local artists in oils, acrylics, watercolor, pastel, encaustic, and prints. Hours: M.-Sat., 10am-5:30pm and first Fri. of the month till 8pm. Contact: 828/251-5796 or at ([www.ashevillegallery-of-art.com](http://www.ashevillegallery-of-art.com)).

**Black Mountain College Museum + Arts Center**, 56 Broadway, Asheville. **Sept. 6 - Jan.**

**4, 2014** - "Shaping Craft + Design at Black Mountain College". The exhibit will focus on craft and design at Black Mountain College. This thematic focus will be achieved through an annual conference, now in its 5th year, along with an exhibition, catalogue and related educational programming. "Shaping Craft + Design at Black Mountain College" is designed to inspire new ways of thinking about the role and impact of Black Mountain College on developing craft and design movements in America and internationally. The conference, to be held Oct. 11-13 coincides with American Craft Week. **Ongoing** - An exhibition space dedicated to exploring the history and legacy of the world's most acclaimed experimental educational community, Black Mountain College. Hours: Wed.-Sat., noon-4pm or by appt. Contact: 828/350-8484 or at ([www.blackmountaincollege.org](http://www.blackmountaincollege.org)).

**Blowers Gallery**, main floor of UNCA's Ramsey Library, Asheville. **Through Sept. 27** - "Urban Photography from the Streets of a Bohemian Mountain Town," an exhibit of both color and black-and-white photographs by local artist Joe Longobardi. A reception will be held on Aug. 27, beginning at 11:30am. Hours: regular library hours. Contact: 828/251-6546.



Work by Cibele Leonetti

**Flood Gallery Fine Arts Center**, 109 Roberts St., Asheville. **Flood Gallery, Through Sept. 30** - "Brazilian Artist: Cibele Leonetti". Watercolorist, Cibele Leonetti was born in Sao Paulo, Brazil; and had her first contact with water, pigments and brushes, as a child. When she was 17 years old, she attended the Pan-American School of the Arts. Her dream was to pursue a career in Architecture; however, the number of women attending university was very small. **Courtyard Gallery, Through Sept. 27** - "8th Annual Mail Art Show". Featuring works by dozens of Asheville artists and hundreds of art submissions from throughout the US and the world from artists that were encouraged to demonstrate or explore imagery of any kind. **Ongoing** - Dedicated to advancing the careers of emerging and mid career artists, as well as educating the public and furthering the understanding of contemporary art and its importance within the community and beyond. Hours: Mon.-Sat., 10am-4pm. Contact: 828/255-0066 or at ([www.philmecanicstudios.com](http://www.philmecanicstudios.com)).

**Guild Crafts of Southern Highland Craft Guild**, 930 Tunnel Road, Asheville. **Ongoing** - Work by members of the Southern Highland Craft Guild in various media. Hours: Mon.-Sat., 9:30am-5pm. Contact: 828/298-7903.

**NC Homespun Museum**, next to Grovewood Gallery, at Grove Park Inn, 111 Grovewood Road, Asheville. **Ongoing** - Featuring the Conway Collection of Appalachian Crafts, owned by Mr. and Mrs. Bob Conway, who began collecting over 40 years ago while visiting the Southern Highland Craftsman Fair at the Civic Center in downtown Asheville. They also collected pottery & other traditional crafts from the Crafts Center during the State Fairs in Raleigh. Hours: Mon.-Sat., 10am-5pm & Sun., 1-5pm. Contact: 828/253-7651.

**S. Tucker Cooke Gallery**, UNC-Asheville, 1st floor, Owen Hall, Asheville. **Through Oct. 4** - "UNC Asheville Art Faculty Exhibition". Participating studio art faculty are Virginia Derryberry, Robert Dunning, Robert Tynes, Megan Wolfe, Tamie Beldue, Jackson Martin, Brent Skidmore, Eric Tomberlin, Matt West, Scott Lowrey and Carrie Tomberlin. The exhibit features work in drawing, painting, sculpture, photography, printmaking and ceramics. Hours: Mon.-Fri., 9am-6pm. Contact: call UNCA's Art Department at 828/251-6559 or at (<http://art.unca.edu/>).

**Southern Highland Craft Gallery**, 26 Lodge Street, former Biltmore Oteen Bank Building in Biltmore Village, Asheville. **Ongoing** - Featuring a wide range of work by members of the Southern Highland Craft Guild. including: pottery, glass, wood, jewelry, fiber, metal, paper, mixed media and natural materials. Hours: Mon.-Sat., 10am-7pm & Sun. noon-5pm. Contact: 828-277-6222 or at ([www.craftguild.org](http://www.craftguild.org)).

**The Folk Art Center of the Southern Highland Craft Guild**, Blue Ridge Parkway Milepost 382, Asheville. **Sept. 21, 10am-4pm & Sept. 22, noon-5pm** - "33rd Annual Heritage Weekend". This free festival sponsored by the Southern Highland Craft Guild features traditional music, dancing and heritage craft demonstrations. **Main**

continued on Page 49