

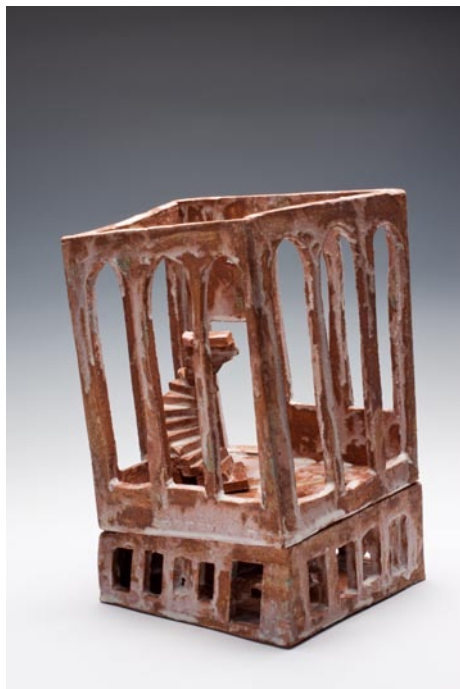
continued from Page 13

community. Perhaps we should all be shut away on some planet for the insane. Then again, maybe that is where we are."

"The effect of consumerism starts at an early age. Children while watching their favorite cartoons are also exposed to commercials showing images of toys and sugary cereals to entice children to want. However, those toys and sugary sweets are soon left in the cabinet or in the corner of a room, and then it's on to the next item. Those children grow up knowing no better, unaware of the trap. Adults are faced with consumerist items every day, all day, with billboards, magazine advertisements, commercials, and even displays in windows as they walk down the street to work," says Luhman.

"Each image is made up of many found photographs sourced from the internet," adds Luhman. "The found images represent a single, amateur view of the locale. They are presented in color, but lack clarity and focus, a suggestion of the fleeting pleasure and subsequent disillusionment of consumption."

Originally founded by Susan Filley as ClayWorks in 2000, in Charleston, SC, the current owners of the renamed, Cone 10 Studios, are Fiorenzo Berardozi, Anne John and Susan Gregory. This is their third and largest space. Cone 10 Studios moved to the upper peninsula area of Charleston, in June of 2010. The concept has always been to house a group of ceramicists sharing in the firing, finances and joy of a large gas-reduction kiln.



Work by Holly Benton

Cone 10 Studios offers memberships for studio space, classes in wheel throwing and ceramic sculpture, as well as exhibition events and a gallery of members' work.

This exhibition features a selection of works from the members of Cone 10 Studios.

For further information check our SC Institutional Gallery listings, call 843/661-1385 or visit (<http://departments.fmarion.edu/finearts/>).

Greenhill in Greensboro, NC, Offers an Exhibition Focused on Drawing

Greenhill in Greensboro, NC, will present *Following Threads: Fiber Art and Drawing*, curated by Edie Carpenter, on view from Sept. 19 through Nov. 9, 2014. A reception will be held on Sept. 19, from 5:30-8:30pm. Carpenter will give a talk between 5:30 and 6:30pm.

Following Threads highlights four artists, Harriet Hoover, Becky Joye, Leigh Suggs, and Jason Watson, who investigate the drawn and stitched line in figurative and abstract works that stretch the definitions of drawing. Hoover, Joye, Suggs and Watson all have artistic practices that embrace several mediums, producing studio drawings as well as works utilizing fiber, collage, hand and machine sewing, and installation. Thematic threads link their graphic and fiber work as well as their multidisciplinary approaches which explore personal narrative spaces.

Line, Touch, Trace, an exhibition presenting 13 North Carolina artists focusing on draftsmanship curated by Edie Carpenter, was developed concurrently with *Following Threads* and is on view at the North Carolina Museum of Art in Raleigh, NC, through Mar. 4, 2015.

Harriet Hoover's works combining several media are informed by the artist's desire "to uncover stories of a place and its history." In *Following Threads* Hoover associates drawing and collage in a new group of works that may be viewed from two sides, including large-scale floor to ceiling collages. Hoover's assemblages, like her 2-D works, are composed from found materials and often bear the names of the places where the artist gathered them. These cast-off remnants are "manipulated, stitched and bound" by the artist in free-standing sculptural pieces that possess a strong material presence and poetic resonance.

Greensboro-based Hoover has attended the Penland School of Crafts and studied landscape architecture at The Academy of Fine Arts in Prague. She holds a bachelor's degree in textile technology and fiber arts focus from NC State University and a MFA from UNC-Greensboro. She currently teaches at NC A & T State University. Recent exhibition venues include LIGHT, Art and Design in Chapel Hill, NC, Art in Odd Places in Greensboro, and the Weatherspoon Art Museum in Greensboro.



Becky Joye, "Lantern", 2010, acrylic and pencil on paper, 30 x 22 inches ©Becky Joye, Courtesy Greenhill

Becky Joye's acrylic and pencil drawings on paper depict imaginary structures resembling farm silos, communication towers, or fairgrounds. Nostalgic machine-age constructions are depicted with precisionist line. Ductwork and pylons are often festooned with floating kite-like appendages in bright colors evoking aerial circuses and dreams of flight.

At Greenhill Joye will present a new group of larger drawings on paper inspired by "industrial winding towers and vintage toys" from a recent trip to Germany. These works on paper will be seen in association with the artist's machine-sewn fabric collages in vivid patterns and new three-dimensional works.

Charlotte, NC, native Joye graduated



Leigh Suggs, "Luminate", 2012, archival gel ink and acrylic on paper, 22 x 22 inches ©Peter Geoffrion, Courtesy Greenhill

from the UNC-Charlotte with a Bachelor of Architecture in 2003. She is currently a member artist at Artspace in Raleigh after being a Regional Emerging Artist-in-Residence in 2013. She recently was in the exhibition *Thought Maps & Ladders* at Artspace.

Joye's work has been featured in numerous exhibitions, including *The Drawing Show*, Pump Project, Austin, TX; a solo exhibition at Designbox, Raleigh; *Unraveled* at the Block Gallery in Raleigh and *Contemporary South* at the Visual Arts Exchange in Raleigh. She was a 2014 Artfields finalist, in Lake City, SC.

Leigh Suggs produces painstakingly crafted works involving "the use of singular pattern producing gestures such as weaving, wrapping, stitching, and adhering." Ink pen line drawings in geometric patterns form polyhedrons and subtle variations in the flow of ink create pulsating effects of light line against a dark ground.

In some of Suggs' most well-known works, hundreds of petal shaped paper elements of are stitched in concentric circles, overlapping petals varying in opacity and density forming large circular wall constructions. Seen together Suggs' works reveal a practice both precise and obsessive, in which light as much as line is enlisted by the artist to produce subtle shifts in reading and evoke organic as well as celestial metaphors.

Suggs is currently an MFA candidate at Virginia Commonwealth University and holds a BFA from the University of North Carolina at Chapel Hill. She is a recent recipient of the NC Arts Council Fellowship Grant and has shown her work at LIGHT, Art and Design in Raleigh, NC, the Weatherspoon Museum, and the Contemporary Art Museum in Raleigh.

Jason Watson is a mixed-media artist, whose work combines interests in the figure, found objects, and text fragments as visual material. Watson's drawings and collages are visual assemblages of remnants of our collective cultural past. Starting with historic statues and portrait busts sketched in museums or at historical monuments, his works serve as storybook-like illustrations providing a pictorial space for various cultural artifacts to inhabit. The artist's interest in the object is pushed to the extreme in new works combining drawing, stitching and assemblage.

Watson has exhibited in galleries, universities and non-profit spaces including in *Drawing Visited* at Greenhill in 2010 and *Jason Watson: A Second Look*, at the Jersey City Museum in 2007-2008. Watson recently completed an artist residency at the McColl Center for Visual Art in Charlotte, NC, where he was the Wesley Mancini Artist in Residence for 2013.

An Artist Talk will be offered on Wednesday, Oct. 15, 2014, from 5:30-7pm - Presentations by Leigh Suggs and Jason Watson where they will discuss the themes, intentions, and material processes employed in their artworks.

An Artist Talk will be offered on Wednesday, Oct. 29, 2014, from 5:30-7pm - Presentations by Harriet Hoover and Becky Joye where they will discuss the themes, intentions, and material processes employed in their artworks.

continued on Page 15

Don't see anything here about your exhibit or art space?

Did you send us your information?

We include all articles and gallery listing free each month, that is those we receive by deadline.

The deadline each month to submit articles, photos and ads is the 24th of the month prior to the next issue. This will be Sept. 24th for the October 2014 issue and Oct. 24 for the November 2014 issue. After that, it's too late unless your exhibit runs into the next month. But don't wait for the last minute - send your info now.

E-mail to (info@carolinaarts.com).



Museum Hours:
Tues-Sat 10am-4pm
Business Hours:
Mon-Fri 8:30am-5pm

233 East Avenue
Seagrove, NC
336-873-8430

info@ncpotterycenter.org
www.ncpotterycenter.org



NORTH CAROLINA POTTERY CENTER