

# Page-Walker Arts & History Center in Cary, NC, Features Works by Christine Hager-Braun

The Page-Walker Arts & History Center in Cary, NC, will present *Layers of Life*, featuring 15 contemporary abstract art quilts by Durham, NC, based fiber artist Christine Hager-Braun, on view from Sept. 23 through Nov. 15, 2015. A reception will be held on Sept. 25, from 6-9pm.

The German artist and former biochemist will present art quilts that refer to stages of her life. Themes of the various series are all revolving around interactions or purposefully avoiding contacts. The series "More Than Just the Sum" is inspired by microscopic images prepared from wood slices, concentrating on interactions. In contrast, "Wide Open Spaces" is a collection of art quilts that focuses on solitude. "Walls and Borders" comprises several pieces that deal with isolation but also overcoming separation.

Hager-Braun's widely exhibited art quilts are in public and private national and international collections.

Hager-Braun works in the art quilt medium. Art quilts are part of the fiber art fields of highly collectable work. These quilts are meant to hang on the wall like oil or water color paintings. The quilted surface, however, brings a dimensional depth to the



Work by Christine Hager-Braun

artwork that paint alone cannot. In addition, Hager-Braun often incorporates sculptured components fabricated from foam, plastic or yarn.

For further information check our NC Institutional Gallery listings, call the Center at 919/460-4963 or visit ([http://www.townofcary.org/Departments/Parks\\_Recreation\\_Cultural\\_Resources/Facilities/Cultural\\_Arts\\_Centers/Page-Walker\\_Arts\\_History\\_Center.htm](http://www.townofcary.org/Departments/Parks_Recreation_Cultural_Resources/Facilities/Cultural_Arts_Centers/Page-Walker_Arts_History_Center.htm)).

# JimGin Farm in Pittsboro, NC, Offers Annual Sculpture Show

For the 14th year in a row, sculptors will display their creations at the *Come Out and Play* sculpture show at JimGin farm just outside Carrboro, NC, on view during Saturdays, Sept. 5, 12 and 19, 2015. The works are on view from 3pm until dark. Many of the works will be for sale. Artists keep 100% of the proceeds.

The show features sculptures of many media and form, created by over 80 artists, which will dot the landscape of this 17-acre horse farm at 150 Wild Horse Run, Pittsboro, NC.

This show began in 2002 as part of a group of shows put on by Hunter Levinsohn, Jackie Helvey, Anke Gassen, Hollie Taylor, and Debbie Meyer to honor those directly affected by the events of 9/11. Attendees, who loved seeing sculpture in an

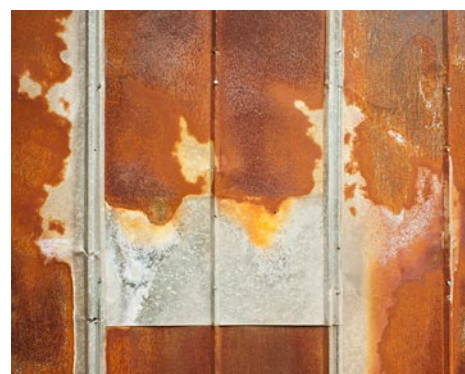
outdoor setting, and artists, who often don't have a place to display larger sculptures, asked for it to continue. Over 1700 people attended last year's show during its five-week run.

Directions – West from Carrboro, go out Jones Ferry Road. Measuring from the light at Willow Creek Shopping Plaza, go 5 and 3/4 miles then turn left onto Wild Horse Run, a gravel drive marked by a street sign. There are *Come Out and Play* banners at the street entrance. Follow the drive until it ends at JimGin Farm. Parking is on the right after passing through the wooden gate.

For further information contact Debbie Meyer by e-mail at ([writetoeloise@gmail.com](mailto:writetoeloise@gmail.com)), call 919/942-3252 or visit ([www.comeoutandplay.info](http://www.comeoutandplay.info)).

# Hillsborough Gallery of Arts in Hillsborough, NC, Features Works by Susan Hope, Jude Lobe & Eric Saunders

The Hillsborough Gallery of Arts in Hillsborough, NC, will present *In The Mind's Eye*, featuring works by fused glass artist Susan Hope, painter Jude Lobe and photographer Eric Saunders, on view from Sept. 21 through Oct. 30, 2015. A reception will be held on Sept. 25, from 6-9pm.



Work by Eric Sanders

Fused glass artist Susan Hope's mind's eye sees a wonderful comparison between listening to beautiful music and observing the beauty found in painting with glass. She writes, "In music, a single note does not make a symphony. For us to hear music, the composer must first arrange the notes one by one, placing and spacing and allowing them to interact with one another. So it is with the interaction of colors and their relationships to each other. This show, *In the Mind's Eye*, is a review of past color work in glass as well as venturing into a new realm



Work by Susan Hope

of color mixing to produce glass 'paintings' continued above on next column to the right

Triangle Art Works is a non-profit organization dedicated to providing services, support and resources to the visual and performing arts and creative industries.

Triangle Art Works can help you connect quickly and easily with the arts community to find arts-related groups, resources, jobs, and news.

WWW.TRIANGLEARTWORKS.ORG  
INFO@TRIANGLEARTWORKS.ORG  
FACEBOOK.COM/TRIANGLEARTWORKS  
TWITTER: @TRIARTWORKS

CONNECT • INFORM • CREATE • SUPPORT • PROMOTE

that reflect in three dimensions the excitement of color in flux. Just as in musical harmony, color harmony brings joy and emotional response to the heart and sings a lovely song."

In explaining the inspiration behind her work for *In the Mind's Eye*, painter Jude Lobe says "Recently on a trip to the big sky country in and near Santa Fe, NM, I had an explosion of new sun-drenched images imprinted in my mind. In this show, a majority of the artworks represent a visual adventure in expressing the glory and exuberance of these images I now see in my mind's eye. Some pieces are representations of the natural environment; some are more abstract. Both, however, exude the emotion of the moment and reference our strong connections to the earth."

Photographer Eric Saunders ponders what the phrase "the mind's eye" really means. He writes, "In thinking about the title of our show, *In the Mind's Eye*, I found myself asking many questions: "Why do I make photographs? What do I see when I make photographs? What do I think I see when I make photographs? What do viewers of my photographs see? What do they think they see? What do I want them to see? I realized these very questions imply that, depending on the context, the term "mind's eye" can mean many different things.

Saunders goes on, "For me, each image I make is an attempt to create an abstract visual adventure for the viewer – an adventure like reading a story or listening to a piece of music. In order to do this effectively I look past the literal (i.e. a cloud, a sky, a house, a barn, a rock, a ripple in a stream, a placard,



Work by Jude Lobe

a beach, a section of rusty metal fence) and see abstract orderly patterns of light, color, line, texture, and form. Depending on the angle of view and the cropping and editing of the image, these patterns will move the viewer into the image and hold the viewer's attention for a period of time. Perhaps they will stimulate the viewer's imagination in a meaningful way. This is the eye in my mind."

The Hillsborough Gallery of Arts (HGA) is owned and operated by 22 local artists and represents these established artists exhibiting contemporary fine art and fine craft. HGA's offerings include acrylic and oil paintings, sculpture, ceramics, photography, textiles, jewelry, glass, metals, encaustic, enamel, and wood.

For further information check our NC Commercial Gallery listings, call the gallery at 919/732-5001 or visit ([www.HillsboroughGallery.com](http://www.HillsboroughGallery.com)).

# ENO Gallery in Hillsborough, NC, Features Works by Tezh Modarressi

ENO Gallery in Hillsborough, NC, is presenting *Time - Out*, featuring solo exhibition of new oil paintings by Tezh Modarressi, on view through Oct. 25, 2015.

Modarressi, a Baltimore native, graduated from the Rhode Island School of Design in 1988. She exhibits in Boston, Providence, Philadelphia, Baltimore and New York. She currently lives in Philadelphia, PA.

Cate McQuaid of The Boston Globe had this to say about Modarressi, "Tezh Modarressi's small-scale paintings... are psychologically charged ...showers of sunlight can't help but recall Vermeer, they're calming amid the shadows and emptiness of many of her rooms."

Modarressi says "This exhibition titled *Time - Out* took shape because I paint interiors, seeking to capture the nuances of light and shadow that enter our rooms. I have developed a technique using thin layers of oil with washes of glaze that help to bring out the light. Starting with a bright palette, I then paint 'backwards' to mute the colors. This creates the subtle tones in the bands of light I seek to portray."

"For this exhibition, I added glimpses of the outside world in some of the pieces – literally, time out. In the paintings that I left without an outside source I retained a feeling of serenity - a quiet moment in time as in someone's personal Time Out."

Mark Donley of ENO Gallery says,



Work by Tezh Modarressi

"Modarressi's *I Still Wonder Where You Are* is a remarkable poetic vision of light and shadow. The light warms the interior space from a window and an open door."

"The interior with its cool palette is illuminated from outside where we see only a glimpse of the warmth and green of the outdoors. Devoid of objects except a single chair and a table the room is left for us to inhabit ... or to simply walk thru the door; a metaphor of opportunity. Or perhaps as the title suggests, the chair awaits a visitor from outside seeking an awaited return."

"There are numerous metaphors and opportunities for interpretation," adds Donley.

continued on Page 49