

Arts Council of Fayetteville

continued from Page 41

a young age. Senora Lynch was 14 years old when she began making pottery after seeing ancient pottery shards and assisting with a pottery class for Haliwa-Saponi tribal elders. Her work has been on display at the White House and the National Museum of Women in the Arts in Washington, DC. "The past is in our hands, the future is in our hands, our hands are on our art," she says.

Darlene Ransom, First People Committee Co-chair and member of the Arts Council's Board of Trustees, is "beyond excited" about this show, which she says is "an opportunity to educate the com-

munity about who we are as a people. Cumberland County borders the home of the largest tribe east of the Mississippi, the Lumbee Nation. We are a people grounded in faith, farming and education. Art is a universal language that transcends all obstacles and barriers."

Artists in the show represent the influences of multiple tribes, including Lumbee, Coharie, Cherokee and Haliwa-Saponi.

For further information check our NC Institutional Gallery listings, call the Council at 910/323-1776 or visit (www.theartscouncil.com/exhibitsmain).

Hillsborough Gallery of Arts in NC Features Works by Linda Carmel, Marcy Lansman, and Lynn Wartski

Hillsborough Gallery of Arts in Hillsborough, NC, will present *Go Figure!*, featuring works by Linda Carmel, Marcy Lansman, and Lynn Wartski, on view from Sept. 26 through Oct. 23, 2016. A reception will be held on Sept. 30, from 6-9pm.

Painters Linda Carmel and Marcy Lansman along with sculptor Lynn Wartski focus on the human form in work this month at the Hillsborough Gallery of Arts.



Work by Linda Carmel

Linda Carmel creates richly textured canvases that focus on the experience of women today. She writes, "The paintings in *Go Figure!* explore the transition from girlhood to womanhood where outer appearance becomes circumscribed and the carefree girl is hidden."

In this series she has used the hooped skirt as a metaphor for how women worked within these confines to find autonomy. Carmel explains, "When girls enter womanhood, both historically and culturally, there are often confining restrictions of dress and behavior that apply. In times and places where women were unable to voice their opinions, they embroidered their thoughts onto household fabrics and clothing. I have incorporated these unspoken words into many of my new paintings."

Carmel adds, "Women's fashion has come a long way from the era of the hooped skirt, but women are still forced to dress the part and hide elements of themselves in order to shatter the remains of the glass ceiling."

Lynn Wartski's imaginative sculptures portray the human body as art dolls. She states, "This medium allows me to explore and play with a wide variety of materials and techniques yet still maintain visual cohesion. Inspiration for these small scale figures comes from places both common and unexpected. I delve into the worlds of art, literature, mythology, legend, everyday life." Wartski uses a variety of materials in her mixed media dolls, but it is her use of metal that links these dolls to her earlier work.



Work by Lynn Wartski

Wartski adds, "For *Go Figure!* I have continued to concentrate on gesture and expression. Though there is no one theme that unifies all my sculptures, there is the intent for each to represent a moment within some narrative. My hope is that the viewer will be drawn into the small details of each doll and hopefully enter into the story she may have to tell."

Marcy Lansman writes of her new work for *Go Figure!*, "Many of these paintings express my nostalgia for a kind of childhood play that seems rare today, nostalgia for a time when children ran around outdoors uncoached and unscheduled. I'm intrigued by the excitement and collaboration that emerges from that kind of spontaneity. Several paintings are based on fifty-year old photos of my sons. I've solicited candid photos from friends and family, but often what I get back are smiling faces looking straight into the camera. So for new subject matter, I've taken to photographing children in local public




Work by Marcy Lansman

playgrounds."

The Hillsborough Gallery of Arts (HGA) is owned and operated by 22 local artists and represents these established artists exhibiting contemporary fine art and fine craft. HGA's offerings include acrylic and oil paintings, sculpture, ceramics, photography, textiles, jewelry, glass, metals, encaustic, enamel, and wood.

For further information check our NC Commercial Gallery listings or visit (www.HillsboroughGallery.com).



Triangle Art Works is a non-profit organization dedicated to providing services, support and resources to the visual and performing arts and creative industries.

Triangle Art Works can help you connect quickly and easily with the arts community to find arts-related groups, resources, jobs, and news.

WWW.TRIANGLEARTWORKS.ORG
 INFO@TRIANGLEARTWORKS.ORG
 FACEBOOK.COM/TRIANGLEARTWORKS
 TWITTER: @TRIARTWORKS

Making Arts Work in the Triangle.

CONNECT • INFORM • CREATE • SUPPORT • PROMOTE

Eno Gallery in Hillsborough, NC, Features Exhibition of Landscapes

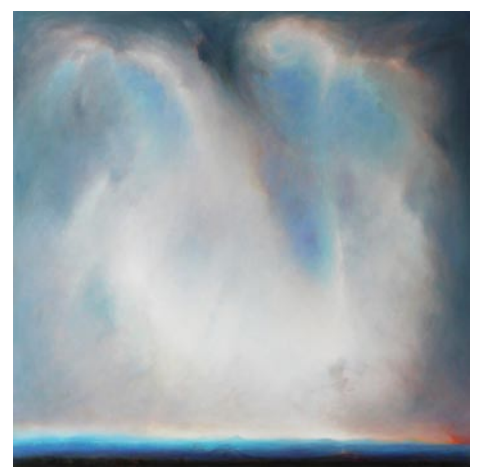
Eno Gallery in Hillsborough, NC, is presenting *Landscapes: matter and spirit*, a group exhibition of seven influential contemporary landscape artists, on view through Sept. 25, 2016.

The exhibition includes works by: Julyan Davis, Larry Gray, Jacob Cooley, Chad Smith, Marlise Newman, Jennifer Miller, and Michael Brown.

The artists in this exhibition portray their singular perceptions of nature. Finding beauty in the natural world, the works in this exhibit express the interaction between the artist and their surroundings.

Exhibiting artist Julyan Davis states, "For many years I painted scenes; landscapes and urban views, old buildings and interiors, with not a figure in sight. Despite this, they were often described as being haunted by a human presence. I am heavily influenced by artists like Bonnard and Vuillard and tend toward very painterly expressionism"

The brushstrokes of each of these artists portray their individual vision of the landscape. Each works with their interpretation of the distribution of light, their choice of atmosphere, clouds and earth to



Work by Larry Gray

render the natural world without violating its truth. Its a truth we can all share.

Eno Gallery is located in the heart of the Hillsborough Historic District. The gallery represents over 30 national and regionally recognized contemporary artists.

For further information check our NC Commercial Gallery listings, call the gallery at 919883-1415 or visit (www.enogallery.net).

JimGin Farm Outside of Carrboro, NC, Offers Sculpture Show

For the 15th year in a row, sculptors will display their creations at the *Come Out and Play* sculpture show at JimGin Farm just outside Carrboro, NC. Many of the works will be for sale. Artists keep 100% of the proceeds.

There are also picnic receptions on Saturday, Sept. 3, 10, and 17, and 24 beginning at 3pm and going until dark. There is no admission, and all are welcome, including dogs if they are on leashes. We know how much dogs love art! On opening day, there is a free shuttle running from Storybook Farm, 231 Storybook Lane, Chapel Hill, NC 27516.

Sculptures of many media and form, created by over 70 artists, will dot the landscape of this 17-acre horse farm

at 150 Wild Horse Run, Pittsboro, NC 27312.

This show began in 2002 as part of a group of shows put on by Hunter Levinsohn, Jackie Helvey, Anke Gassen, Hollie Taylor, and Debbie Meyer to honor those directly affected by the events of 9/11. Attendees, who loved seeing sculpture in an outdoor setting, and artists, who often don't have a place to display larger sculptures, asked for it to continue. Over 2,000 people attended last year's show.

In honor of this 15th year, attendees will be given a free cookbook created by the artists and the show curators.

For further information visit (www.comeoutandplay.info).

FRANK Gallery in Chapel Hill, NC, Offers New Exhibits

FRANK Gallery in Chapel Hill, NC, will present several new exhibits, on view from Sept. 6 through Oct. 9, 2016. A reception will be held on Sept. 9, from 6-9pm.

FRANK's fall lineup starts off with a bang this September, kicking off the season with new exhibitions, each featuring highly acclaimed local favorites. Painter Katherine Armacost and woodworker Jim Oleson bring abstract elegance and clean lines to their featured exhibitions, *Against the Wall* and *Natural Lines* (respectively). We are also thrilled to announce that two Triangle legends and old friends, John

Rosenthal and Clyde Edgerton, will team up for *Paintings, Photographs, Friendship*. In addition, our community outreach gallery will turn its lens on learning through our partnership with Kidzu Children's Museum and in preparation for our annual photography festival.

We are very pleased to present two local favorites this September at FRANK. Abstract painter Katherine Armacost, and modern furniture maker Jim Oleson will present their latest bodies of work in overlapping exhibitions.

Armacost's *Against the Wall* will fea-

continued on Page 43