

# SC Commercial Galleries

continued from Page 51

**Pluff Mudd Art**, 27 Calhoun St., Bluffton. **Ongoing** - Featuring works by Terry Brennan, Bob Berman, Peggy Carvell, Laura Cody, Diane Dean, Cheryl Eppolito, Ed Funk, David Knowlton, Marilyn McDonald, Daurus Niles, Linda Patalive, Jim Renauer, Patti Seldes, Michael Smalls, Ellen Blair Rogers, Steve White, Pat Wilcox, Carol Williams and Irene K. Williamson. Hours: Mon.-Sat., 10am-5pm. Contact: 843/757-5590.

**Preston Pottery Studio**, 10 Church Street, Bluffton. **Ongoing** - Featuring above average pottery since 1973 by Jacob Preston. Hours: Tue.-Sat., 10am-5pm. Contact: 843/757-3084.

## Camden

**Artists' Attic**, 930 S Broad St., Camden. **Ongoing** - Featuring a new frame shop and Saturday hours, along with our regular gallery, and cooperative open studios shared by 8 professional artists working in various mediums. Including Dot Goodwin, Jane Hannon, Ann Starnes, Emily Houde, Kathy Redner, Benira Sutphin, Tari Federer, and Deb Maza. Commissions are accepted. Hours: Mon.-Fri., 10am-4pm; Sat., 10am-3pm and by appt. Contact: 803/432-9955 or e-mail at (tarfederer@earthlink.net).

**Dovetails**, 645 Rutledge Street, Camden. **Ongoing** - Featuring custom bench crafted furniture by Jim Rose. Each piece is made by hand to the client's specifications. Jim works in a variety of woods including heart pine, walnut, cypress, maple, and cherry. Jim also works in exotic woods from South America and Africa. Visitors can watch individual pieces of furniture being built. Every piece has its own personality and becomes an instant heirloom. Hours: Mon.-Sat., 10am-5pm or by appt. Contact: 770/330-5000 or 803/446-3124.

**Rutledge Street Gallery**, 508 Rutledge St., Camden. **Ongoing** - Featuring original works of art from regional and national artists including Clara Blalock, Elizabeth Barber, Anne Bivens, Yong Chu Chang, Marjorie Greene, Joyce Hall, Seth Haverkamp, Carrie Payne, John Pototschnik, Bob Ransley, Dennis Snell, Maci Scheuer, and many more. Chinese Antique Furniture Pieces. Hours: Tue.-Sat., 11am-5pm. Contact: 803/425-0071 or at (www.rutledgestreetgallery.com).

## Charleston

**Broad Street, Charleston. Sept. 2, 5-7pm** - "First Fridays on Broad," featuring an artwalk with the following galleries: Ellis-Nicholson Gallery, Edward Dare Gallery, COCO VIVO, Mary Martin Fine Art, Spencer Galleries, Ella Walton Richardson Fine Art, and Martin Gallery. Contact: Jeannette Nicholson at 843/722-5353 or at (http://www.charlestongalleryrow.com/).

**Anglin-Smith Fine Art**, 9 Queen Street, corner of Queen & State Streets, Charleston. **Ongoing** - Featuring original works by Betty Anglin Smith, Jennifer Smith Rogers, Tripp Smith, Shannon Smith Hughes, Kim English, Darrell Davis, Colin Page, Carl Plansky, and Victor Chiarizia. Hours: Mon.-Sat., 10am-5pm & Sun. 1-5pm. Contact: 843/853-0708 or at (www.anglinsmith.com).

**Ann Long Fine Art**, 54 Broad Street, Charleston. **Ongoing** - Classical Realism – still life, figurative work, landscapes and sculpture. The work represented by the gallery spans two generations of contemporary artists trained, in the most prestigious ateliers in Florence, Italy, to use the classical, realist techniques of European Old Master artists: oil paintings and drawings by Ben Long, as well as his studies for fresco; including Charleston artist Jill Hooper's still lifes and recent figure work; and many works by teachers of the Florence Academy, including its founder Daniel Graves. Also, represented are the figurative monotypes from the estate of deceased German Modernist Otto Neumann (1895 – 1975). Hours: Tue.-Sat., 11-5pm and by appt. Contact: 843/577-0447 or at (www.annlongfineart.com).

**Artizom Framing & Gallery**, 334 E. Bay Street, Suite J, Charleston. **Ongoing** - Featuring the contemporary artwork of Jackie and Charles Ailstock. Hours: Mon.-Fri., 10am-6pm or by appt. Contact: 843/723-3726 or at (www.artizom.com).

**Atelier Gallery Charleston**, 153 King Street, Charleston. **Ongoing** - The gallery's focus is to support and promote a variety of artists, from the Southeastern region, while merging the classics with the moderns. Traditional portraits and landscapes are displayed alongside contemporary canvases and sculptures. Hours: Mon.-Sat., 10am-6pm. Contact: 843/722-5668 or at (www.

theateliergalleries.com).

**Atrium Art Gallery**, 61 Queen Street, Charleston. **Ongoing** - The gallery's open beautiful space in an historic Charleston building shows the works from over 10 artists offering contemporary, abstract, realism, landscape, lowcountry and photography. Hours: Mon.-Sat., 10am-6pm. Contact: 843/973-3300 or at (www.atriumartgallery.com).

**Ben Ham Images**, 416 King Street, Charleston. **Ongoing** - Ben Ham Images recently expanded to its new 2200 square feet of elegant gallery space in Charleston. Located downtown in the "Upper" King Street design district amidst world class shopping and restaurants, the Charleston gallery is truly an unique experience that transports you on a spectacular journey. Hours: Sun.-Mon., noon-5pm and Tue.-Sat., 11am-6pm. Contact: 843/410-1495 or at (http://benhamimages.com/).

**Bird's I View Gallery**, 119-A Church St., Charleston. **Ongoing** - Featuring originals and prints of bird life by Anne Worsham Richardson, as well as works by Nancy Rushing, Alice Grimsley, and Delta Cutting Zimmerman. Hours: Mon.-Sat., 10am-5pm. Contact 843/723-1276, 843/766-2108 or at (www.annworshamrichardson.com).

**Blue Heron Glass**, 1714 Old Towne Rd., Northridge Shopping Center near T-Bonz Steak House, Charleston. **Ongoing** - Whether by commissioning an exquisite stained glass panel for home or office, stocking up on hard-to-find supplies for the glass artist, or selecting the perfect gift, Blue Heron Glass is truly a place where light and color blend through imagination. We offer a wide variety of classes. Hours: Tue.-Fri., 10am-6pm, & Sat., 10am-3pm. Contact: 843/769/7299, or at (www.blueheron-glass.com).

**Carolina Clay Gallery**, Freshfields Village, 565 Freshfields Dr., located at the intersection of Seabrook and Kiawah Islands, 15 miles south of Charleston, Johns Island. **Ongoing** - Carolina Clay Gallery features the work of over 100 North and South Carolina potters and glass artists. Also available are the wonderful, whimsical life size copper frogs of Charles and Zan Smith. Hours: Mon.-Sat. 10am-8pm, & Sun., 11am-6pm. Contact: 843/243-0043 or at (www.carolinaclaygallery.com).

**Carolina Antique Maps and Prints LLC**, 91 Church St., Charleston. **Ongoing** - Featuring Antique Maps and Prints from the 16th to the 19th century. Hours: Tue.-Sat., 11am-5pm or by appt. Contact: 843/722-4773 or at (www.carolinaantiqueprints.com).

**Charleston Art Brokers**, AIM on King, 648 King Street, Charleston. **Ongoing** - Representing emerging and established fine art artists and photographers from Charleston and the Southeast. Hours: Mon.-Sat., 10am-5:30pm. Contact: (carol@charlestonartbrokers.com) or at (www.charlestonartbrokers.com).

**Charleston Crafts**, 161 Church Street, across from Tommy Condon's, one block south of Market St., Charleston. **Ongoing** - Charleston Crafts is the longest operating craft cooperative in Charleston, featuring only items designed and created by SC artists. Gallery showcases a blend of contemporary and traditional craft media plus photography. Hours: Sun.-Thur., 10am-6pm & Fri.-Sat., 10am-8pm. Contact: 843/723-2938 or at (www.CharlestonCrafts.org).

**COCO VIVO** interior and fine art for relaxed living, Gallery Row, 25 Broad St., Charleston. **Ongoing** - Featuring works by Tony van Hasselt, aws, Mitch Billis, Patricia Roth and Roger Milinowski. Also representing jewelry designer Betty Holland and photographer Sandy Logan. Hours: Mon.-Sat., 9:30am-5:30 & Fri. till 8pm. Contact: 843/720-4027.

**Coleman Fine Art**, 79 Church St., Charleston. **Ongoing** - Both a fine art gallery, and a gold leaf studio, Coleman Fine Art has been representing regional and national artists for over 30 years. The Coleman studio produces the finest handcrafted gilt frames, and offers gilding restoration. The gallery specializes in Contemporary American paintings of both the American Impressionist and Realist schools. We proudly represent watercolor painter Mary Whyte, whose paintings focus on the life and culture of the indigenous people of the South Carolina Lowcountry. Currently we represent some of the country's leading plein-air painters, John Cosby, Gil Dellinger, Marc R. Hanson, Kevin Macpherson, Gregory Packard, George Strickland, and Mary Whyte. Hours: Mon., 10am-4pm; Tue.-Sat., 10am-6pm or by appt. Contact:

843/853-7000 or at (www.colemanfineart.com).

**Cone 10 Studios**, 1080-B Morrison Drive, in the heart of NoMo, Charleston. **Ongoing** - A studio and gallery of local potters and sculptors. We also offer classes in beginning to intermediate wheel throwing and clay sculpture. Hours: Mon.-Sat., 11am-5pm & Sun., 1-5pm. Contact: 843/853-3345 or at (www.cone10studios.com).

**Corrigan Gallery**, 62 Queen Street, Charleston. **Ongoing** - Contemporary fine art including paintings, photography, prints and sculpture. Now showing works by Manning Williams, Richard Hagerty, Joe Walters, Sue Simons Wallace, Gordon Nicholson, John Moore, William Meisburger, Mary Walker, Kristi Ryba, Paul Mardikian, Kevin Bruce Parent and Judy Cox. Located in the heart of the downtown historic district of Charleston's French Quarter. Artist at work on location - work in progress to be viewed. Hours: Mon.-Sat., 10am-5pm or by chance & appt. Contact: 843/722-9868 or at (www.corrigan-gallery.com).

**Courtyard Art Gallery**, 149 1/2 East Bay Street, Charleston. **Ongoing** - Featuring works by Veronique Aniel, Melissa Breeland, Mary Ann Bridgman, Renee Bruce, Beverly Brunswig, Wilma Cantey, Carole Carberry, Linda Churchill, Christine Crosby, Judy Jacobs, Alix Kassing, Jennifer Koach, Tug Mathisen, Yvonne Rousseau, Suzy Shealy, Coleen Stoioff, and Tom Tremaine. Hours: Mon.-Sat., 10am-5pm & Sun. noon-5pm. Contact: 843/723-9172 or at (www.courtyardartgallery.com).

**Dog & Horse**, Fine Art and Portraiture, & Sculpture Garden, 102 Church St. Charleston. **Ongoing** - Did you know that many of the 30+ artists we represent paint people as well as animals? Portraits make a wonderful and unique gift and are a great way to commemorate a life event or honor a beloved pet. Visit the gallery in person or online and see a variety of styles and mediums. Hours: Mon.-Fri., 10am-5pm & Sat., 11am-5pm. Contact: 843/577-5500 or at (www.dogandhorsefineart.com).

**East Bay Garden Gallery**, 114 E. Bay St., in Coates Row, near Rainbow Row, Charleston. **Ongoing** - Artist and owner, W. Hampton Brand provides a unique and more complete "Charleston experience" with his art. His primary subject is the significant architecture and beautiful historic buildings of our city. For those who seek the ultimate Charleston keepsake - he puts his art on the increasingly rare artifacts of historic roofing slate and old handmade Charleston brick. In addition to his art, you're invited to browse among the eclectic garden finds in the courtyard including old gates, statuary, pottery, unique iron pieces and so much more. Hours: Mon.-Sun., 9am-2pm. Contact: 843/958-0490 or 843/327-6282.

**Edward Dare Gallery**, 31 Broad Street, between Church & State Sts., Charleston. **Ongoing** - Located on historic Broad Street's GALLERY ROW in the French Quarter of Charleston, SC, the gallery features an extensive variety of fine art including landscape, figurative, still life & marine paintings plus exquisite pottery, photography, fine handcrafted jewelry, unique works in glass & metal plus bronze sculpture – all by some of the most sought after artists in the low country and accomplished artists from across the nation. Many of the artists represented have a personal connection to Charleston and the coastal Carolinas and tend to include pieces that celebrate the colorful tapestry of the southern coastal culture. Visit the gallery to see crashing waves, lush marshes, still lifes of camellias & oyster shells, coastal wildlife and sensitive yet powerful portraits of the south. Hours: Mon. - Sat., 11am-5pm. Contact: 843/853-5002 or at (www.edwarddare.com).



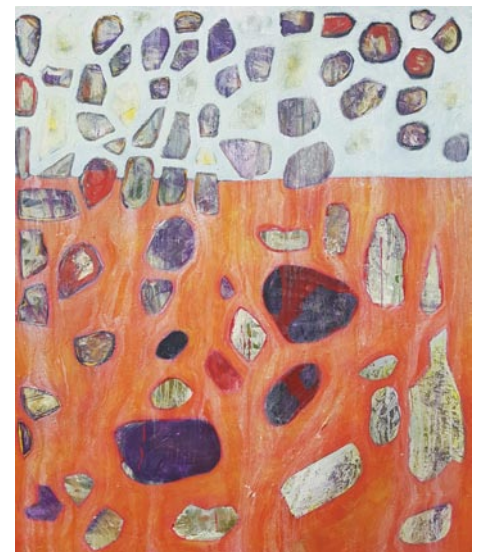
Work by Evgeny & Lydia Baranov

**Ella Walton Richardson Fine Art**, 58 Broad St., Charleston. **Sept. 2 - Oct. 3** - "New Works by Evgeny & Lydia Baranov". A reception will be held on Sept. 2, from 5-8pm. As the heat of summer starts to break, romance comes alive in a new show at Ella W. Richardson Fine Art. Painting duo Evgeny and Lydia Baranov are back with a collection of stunning European

beauties, from sailboats in Hoorn to peonies in Paris. Every year, the Baranovs seem to expand their horizons both in travel and artistry and we are so pleased to welcome their return to the gallery. **Ongoing** - Founded in 2001, this internationally acclaimed fine art gallery is located in the historic French Quarter district in Charleston. Richardson represents American, Dutch, and Russian-born artists of the contemporary Impressionist, Realist, and Abstract styles. Sculpture by the award-winning Marianne Houtkamp and photography by Richardson also fill the elegant and inviting space. In addition, the gallery is available as a scenic event venue. Hours: Mon.-Sat., 10am-5pm. Contact: 843/722-3660 or e-mail to (info@ellarichardson.com).

**Ellis-Nicholson Gallery**, 1.5 Broad St., Charleston. **Ongoing** - Paintings by Victoria Platt Ellis, Jeannette Cooper Nicholson, Brian Scanlon and Robert M. Sweeny. Also representing sculptors Alex Palkovich and John Douglas Donehue, Jr.; jewelry designers Rebecca Johnston and Carole McDougal; potter Mary Nicholson and glass blower Michael Barnett. Hours: Mon.-Sat. 11am-6pm or by appt. Contact 843/722.5353 or at (www.ellisnicholsongallery.com).

**Eva Carter's Studio**, Wadmalaw Island, Johns Island. **Ongoing** - Offering the bold abstract expressionist oil paintings of Eva Carter. Hours: by appt. only. Contact 843/478-2522 or at (www.evacartergallery.com).



Work by Michael Hayes

**FABULON**, A Center for Art and Education, 1017 Wappoo Road, West Ashley, Charleston. **Through Sept. 9** - "Souvenirs of Summer!". Fabulon artists are gathering together with a body of work commemorating the end of summer! Featured artists include Louise Aug, Meyriel Edge, Amanda England, Michael C. Hayes, Sydney Leighton, Lisa Z. Lindahl, Laura McRae-Hitchcock, Hampton R. Olfus, Jr., Steven Owen, Bly Triplett and Susan Irish. Fabulon will introduce new visiting artists along with our new permanent artist, Vickie Hickman. **Sept. 23 - Oct. 23** - Featuring a solo exhibition and sale by Michael Hayes. A reception will be held on Sept. 23, from 5-8pm. Hayes is an artist based in Charleston, SC, who works primarily with oil based media, creating nonrepresentational compositions that vary in their size and subject. **Ongoing** - Fabulon is a new gallery in West Ashley. It represents encaustic work by Susan Irish, artisan furniture, unique hand crafted jewelry by Chloda and a variety art from new and emerging artists. Fabulon also offers group and private classes for adults, children, and home scholars. We now represent: Julia Deckman, Meyriel Edge, Susanne Frenzel, Alice Stewart Grimsley, Laura McRae Hitchcock, Hampton R. Olfus, Jr., Steven Owen, Steven Owen, Ryan Siegmann, David R. Warren, Kenneth E Webb. Hours: Tue.-Sat., 10am-6pm. Contact: 843/566-3383 or at (www.fabulonart.com).

**Fire & Earth: Fine Pottery**, 1417 Ashley River Rd., Charleston. **Ongoing** - Featuring original work by gallery owner Kris Neal, and the Charleston area's most comprehensive pottery classes. Hours: Mon.-Sat., 10am-6pm. Contact: 843/766-2776 or at (www.fireandearthpottery.com).

**Galerie on Broad**, 29 Broad Street, Charleston. **Ongoing** - The gallery is dedicated to bringing national and international artists to the art scene. Art collectors from all over find their way into the cozy and quaint atmosphere of Historic Gallery Row. Galerie on Broad features impressionistic landscapes and figurative works by nationally and internationally known artists such as Calvin Liang, Camille Przewodek, Lori Putnam, Dee Beard Dean, Richard Oversmith, Kate Mullin, Katie Dobson Cundiff, James Richards, Giner Bueno, Marc Esteve, and John Michael Carter. Hours: Mon.-Sat., 11am-5pm. Contact: 843/410-6332 or at (www.galerieon-broad.com).

continued on Page 53