

Editorial COMMENTARY

by Tom Starland, Editor and Publisher

On Our Cover

On our cover this month is a work by Meryl Lefkovich, an Asheville, NC, artist, who is represented by Gallery COR, on Biltmore Avenue in Asheville. She doesn't have any exhibits scheduled at this time, but maybe some other galleries around the Carolinas might think about that. I've been seeing some of her works posted on Facebook and I thought that this work would fit well on our February issue. And, I think it looks great there.

Things Will Be Heating Up Now

This is the last month of what might seem like the slow time of Winter. From now on things are going to get going in full gear. Festivals will be starting, universities and arts organizations will be in full swing - because the tourists will be returning- much like some migratory birds. And the weather will - well you can't tell what the weather will be like having just spent a week in the mid-70s in January. And the week before that it was barely in the 40s as the high temps. So brush off those cobwebs of Winter and get ready for Spring. There is still a chance that it will snow here in the Carolinas - not just in the mountain areas, but everywhere.

Gallery Listing A Bit Skimpy On Photos

You might notice that our Gallery Listings are really void of many photos of artworks this month. That was partly planned and partly due to the lack of new photos being sent by e-mail or being posted on social media.

I can't stand using some of the same photos over and over again to spice up those gallery listings. But photos of artworks make those listings more palatable to the readers - or should I say observers. As I'm

not sure anyone really reads the Gallery Listings. While those listing make up half of our publication every month, they are not as interesting as the featured articles, even though they contain lots of information.

All we need for artists and gallery owners to do is send high res images (at least 3" wide by 300dpi) with the names of the artists and the gallery which represents them.

It's a great opportunity for those galleries which do not present exhibitions to get some visibility for their artists or their gallery, as we also include images of inside galleries - even the outside of galleries (as least those that look interesting from the outside).

Plus there is always the chance that a photo will catch the eye of this editor and he'll think, "Wouldn't that make a great cover." You never know, but of course then we'll need a much bigger image file for that 10" x 16" space. But that can come later after an image is first seen and then considered to fit our cover needs. And, how that selection is made is an unknown - sometimes right up to deadline.

I will mention that the deadline is always the 24th of the month "prior" to when the next issue starts. Or in the case of you sending in a press release about an exhibit you are having or a gallery is presenting - the 24th of the month "prior" to the month your exhibit will start. We like for readers to be able to attend opening and receptions.

Here's two examples: if an exhibit starts on Mar. 1, you need to send us info on that before the deadline of Feb. 24th and an exhibit which starts Mar. 26, you still need to send us that info before the deadline of Feb. 24 - not by Mar. 16 or the weekend before the exhibit starts - it takes time to put an issue together. And whenever there is a beginning date of an exhibit there is an ending date (except for some institutions). And don't forget the reception date and time.

Carolina Arts
www.carolinaarts.com



You can find [past issues](#) all the way back to August 2004!

You can find [past articles](#) all the way back to June 1999!

History is the gateway to the future.

Send us your email address to be added to our list to receive notice of each monthly issue.

info@carolinaarts.com

2024 Southeastern Wildlife Expo

continued from Page 3

the place where artists, exhibitors and sporting enthusiasts gather in Charleston - from all corners of the nation - united by a shared love for wildlife, conservation and the great outdoors. Each year, we receive hundreds of applications from artists and exhibitors, eager to join the SEWE community. It's one of our greatest pleasures to welcome new talent to the Lowcountry every February. As we prepare for another remarkable SEWE, we invite you to explore 2024's new artists and exhibitors collective. Learn about these passionate contributors, discover their origins and preview what they'll showcase



Two Women view art at the Expo

in the Lowcountry.

For further information check our SC Institutional Gallery listings and visit (<https://www.sewe.com/>) for complete info on the offerings and ticket info.

Charleston Artist Guild in Charleston, SC, Features Works by Ruthie Beberman Sumpter

The Charleston Artist Guild in Charleston, SC, will present *Life in the Abstract*, an exhibition featuring artwork by Ruthie Beberman Sumpter, on view from Feb. 1 - 29, 2024. A reception will be held on Feb. 2, from 5-8pm.

With three decades of experience as a professional potter in Charleston, Sumpter has emerged as a distinguished artist whose journey initially began with painting and drawing for personal enjoyment. Over time, her artistic endeavors gained recognition, leading her to shift her focus towards a more intensive study of the craft of painting.

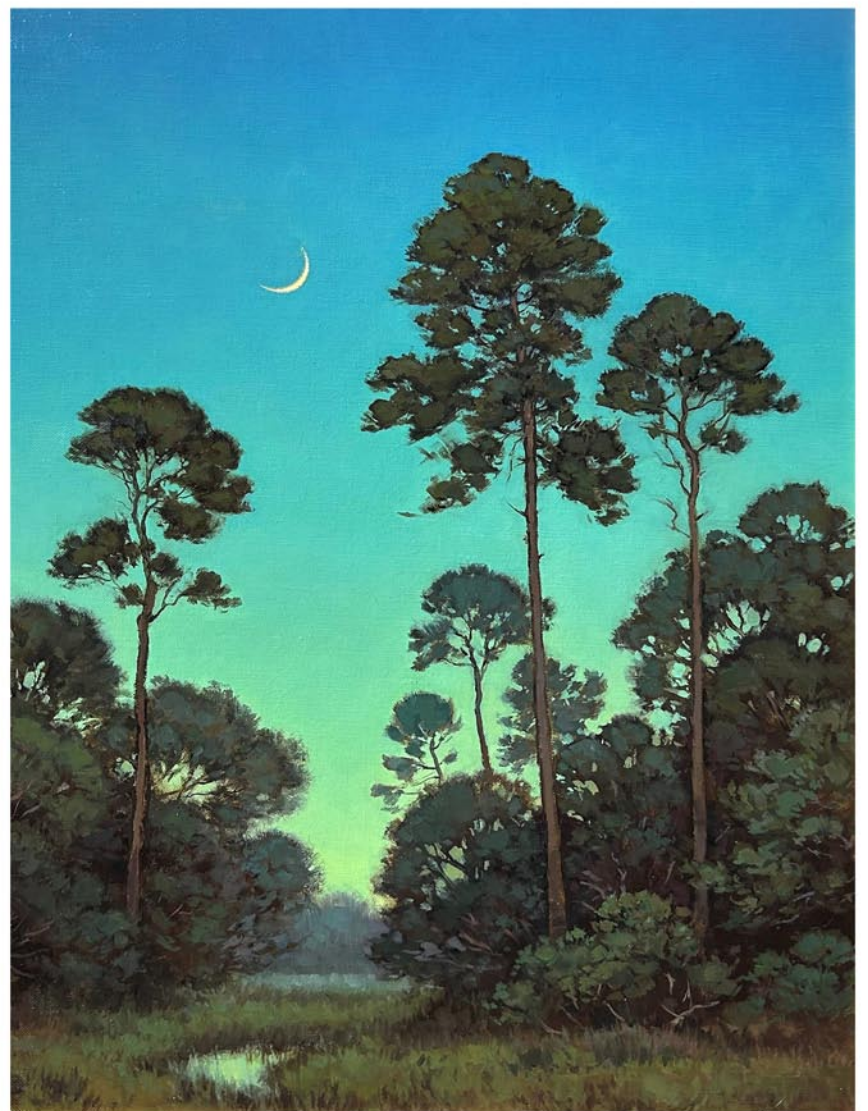
Sumpter states, "My art is intuitive and not from schooling, and my priority is color and shape. The base layer after gesso is a texture medium. In some pieces, I may add figures or faces and I rarely know before hand how the final painting will come together. The high degree of unpredictability fascinates me. My painting is not complete until my colors and shapes form a unifying whole. When it is pleasing to my eye, my



Work by Ruthie Beberman Sumpter

[continued on Page 6](#)

WELLS GALLERY



KAREN LARSON TURNER, *SILENT NIGHT*, 24x18", OIL

THE SANCTUARY AT KIAWAH ISLAND GOLF RESORT
1 SANCTUARY BEACH DR | KIAWAH, SC | 29455 | 843.576.1290

WWW.WELLSGALLERY.COM

[Table of Contents](#)