

# SC Commercial Galleries

## Aiken / North Augusta

**Lee-Johnston Originals and Art**, 401 W. Martintown Rd., on the courtyard of the North Hills Shopping Center, Suite 10, North Augusta. **Ongoing** - Featuring hand-produced fine and decorative art, ranging from limited-edition photographic prints to hand-stitched quilts, by local and regional artists, including: Nancy B. Smith, R.R. Frazier, and Joni-Dee Ross. The gallery also carries books and original greeting cards. Hours: Tue.-Sat., 10am-6pm or by appt. Contact: 803/8198533.

**The Artists' Parlor**, 126 Laurens Street, N.W., Aiken. **Ongoing** - Featuring fine American crafts and art objects. Hours: Mon.-Sat., 9:30am-5:30pm. Contact: 803/648-4639.

**Wild Hare Pottery**, 1627 Georgia Avenue at the corner of Alpine Avenue, N. Augusta. **Ongoing** - Featuring handcrafted pottery in porcelain, earthenware, stoneware, and raku by David Stuart. Hours: M-F, 10am-5pm. (Call ahead.) Contact: 803/279-7813.

## Anderson

**Brushstrokes**, 1029 S. McDuffie St., Anderson. **Ongoing** - Uniquely painted furniture, faux finishes and original artwork featuring the works of Pamela Tillinghast Sullivan. Hours: Mon.-Tues. or by appt.; Wed.-Fri., 10am-5:30pm. Contact: 864/261-3751.

## Beaufort Area

**Atelier Off Bay**, 203 West Street, Beaufort. **Ongoing** - Featuring a group of 14 working professional artist's studios and galleries open to the public in Historic Beaufort. Hours: Mon.-Sat., 11am-5pm. Contact: 843/379-0186 or at ([www.atelieroffbay.com](http://www.atelieroffbay.com)).

**BASEcamp Gallery**, 500 Carteret Street, Ste. D, Beaufort. **Seasonally** - The Beaufort Digital Corridor supports Beaufort's visual arts community through BASEcamp Gallery where local artists are invited to display and sell their work. We host a quarterly artist reception to introduce the newest exhibiting artist and invite our members and community art lovers to attend. Hours: call ahead. Contact: 843/470-3506 or at ([www.beauforddigital.com/community/gallery](http://www.beauforddigital.com/community/gallery)).

**Beaufort River Glass**, 812 Bay Street, Beaufort. **Ongoing** - We offer many home accents, garden accents, functional art, original paintings, and much more! Hours: Mon.-Sat., 10am-5pm & Sun. 11am-4pm. Contact: 843/379-5445 or at (<https://www.beaufortriverglass.com>).

**Charles Street Gallery**, 914 Charles Street, @ Charles & Greene Street, Beaufort. **Ongoing** - Located in a lovingly restored building, we offer custom framing and handcrafted furniture, and feature exhibits by local artists. Hours: Mon.-Fri., 10am-6pm & Sat., 10am-3pm. Contact: 843/521-9054 or at ([www.thecharlesstreetgallery.com](http://www.thecharlesstreetgallery.com)).

**Green Herring Art and Framing Studio**, 917 Bay Street Suite G, Beaufort. **Ongoing** - Hank D. Herring specializes in framing and mixed media art. See his work or schedule an appointment for custom framing. Contact: 843/501-1806.

**I. Pinckney Simons Gallery LLC**, 711 Bay Street, downtown Beaufort. **Ongoing** - Since 1979, the I. Pinckney Simons Gallery has endeavored as art consultants to both clients and artists to educate, collect, and place original art. We specialize in the personal interest of the client whether it is antique American paintings, regional artists, or artists of a designated locale. Today, we stay current with contemporary established artists of our Southeastern Region with interest in the Lowcountry. Our gallery exhibits a fine collection of over 30 award winning artists offering original paintings in all mediums, sculpture, glass, jewelry, and beautiful hand sculpted ceramic vessels. Commissions are always considered to complete specific interests of clients. We look forward to your gallery visit in person or virtual. Hours: Tue.-Fri., 11am-4:30pm & Sat., 11am-3pm or by appt. Contact: 843/379-4774 or at ([www.ipsgallery.com](http://www.ipsgallery.com)).

**Legacy Art Gallery**, 917 Bay Street, located in the Old Bay Marketplace, Beaufort. **Ongoing** - Featuring original artwork of the Southern - Gullah legacy. Original paintings, prints and gifts of the artist, Lisa Gilyard-Rivers. Hours: Tue.-Sat., 10am-5pm. Contact: at ([www.legacyartgallery.com](http://www.legacyartgallery.com)).

**Longo Gallery**, 103 Charles Street, Beaufort. **Ongoing** - Featuring new works including paintings, collages and constructions by Eric Longo &

sculptures by Suzanne Longo. Hours: Mon.-Sat., 10am-5pm. Contact: 843/522-8933.

**Ly Bensons Gallery**, 870 Sea Island Parkway, Frogmore, Beaufort. **Ongoing** - Featuring the exhibits, "The Gullah/African Link" and "Out of Africa," featuring rare Shona Verdite sculptures by various artists from Zimbabwe, Africa, and original photographs by Gullah photographer and gallery owner Rev. Kenneth F. Hodges. Also, an array of antiques, batiks, and artworks for the discerning collector. Hours: Mon.-Sat., 10am-5:30pm. Contact: 843/525-9006 or at ([www.lybensons.com](http://www.lybensons.com)).

**Melissa Lyons Art**, 805 Bay Street, Beaufort. **Ongoing** - Featuring classic, timeless, original artwork with a coastal, rustic vibe. Lyons says, "I am a God taught artist featured in Target stores, on HGTV, and more! Shop for my original artwork at ([www.melissalyonsart.com](http://www.melissalyonsart.com)) or stop by to see me paint in person!" Hours: by chance. Contact: at ([www.melissalyonsart.com](http://www.melissalyonsart.com)).

**Mystic Osprey Gallery**, 23B Market, #1, Habersham Marketplace, Beaufort. **Ongoing** - Mystic Osprey Gallery showcases artists from around the country who explore Nature, Habitat, and Our Place Within and the work includes original paintings, sculptures, prints, jewelry, and ceramics. The Osprey celebrates nature. We hope these artistic and symbolic representations of nature, habitat, and how we as humans fit into this environment might help us become better stewards of our planet, its fauna, and flora. Hours: Tue.-Sat., noon-6pm or by appt. Contact: 843/475-6781 or at (<https://www.mysticosprey.com/>).

**Rhett Gallery**, 901 Bay St., Beaufort. **Ongoing** - Featuring prints and paintings of the Lowcountry by four generations of artists, wildfowl carvings by William Means Rhett, antique prints & maps, Audubons, and Civil war material. Hours: Mon.-Sat., 9am-5:30pm; Sun. 11am-2pm. Contact: 843/524-3339 or at ([www.rhettgallery.com](http://www.rhettgallery.com)).

**Thibault Gallery**, 815 Bay Street, Beaufort. **Ongoing** - This gallery is a haven for talented artists to showcase their art, as well as an attraction for tourists and locals alike. Here you will find original art in a variety of mediums, from oil paintings and water color paintings, to fine art photography. Watch our artists at work. You can commission a one-of-a-kind piece or take home something that fits in your bag. From large wall art and giclee prints to note cards and postcards, we have it all. You will always find just the right gift for someone special, or that perfect artwork to make your room complete. We welcome you to stop in often as we will always have new and interesting things. Hours: Mon.-Sat., 10am-6pm. Contact: 843/379-4278 or at ([www.ThibaultGallery.com](http://www.ThibaultGallery.com)).

ALTERNATE ART SPACES - Beaufort **Coastal Art Supply**, 216 West Street, Beaufort. **Ongoing** - Featuring art supplies for professionals, hobbyists, and beginners of all ages with great prices! Art activities for children. Hours: Tue.-Fri., 10am-6pm & Sat., 10am-4pm. Contact: 843/524-2787 or e-mail to ([coastalartsupply@gmail.com](mailto:coastalartsupply@gmail.com)).

## Belton

**Carlene Shuler Brown Gallery**, 3605 Old Williamston Road, Belton. **Ongoing** - Original watercolor paintings and prints by Carlene Shuler Brown. Also acrylic collages and paper collages using stained papers, oriental papers and lace papers by Carlene Shuler Brown. Commissioned paintings Painting and drawing classes are offered. Custom framing is offered also. Hours: Mon.-Fri., 10am-5pm or by appt. Contact: 864/225-3922.

## Bluffton

**Ben Ham Gallery**, 210 Bluffton Road, old Town, Bluffton. **Ongoing** - Located in the heart of Historic downtown Bluffton, SC in one of the hottest areas in the Lowcountry and a short drive from Palmetto Bluff and Hilton Head Island. Ben designed and built the interior of the Lowcountry style building. It is the perfect space to see his stunning pieces. Hours: Call for hours. Contact: 843/815-6200 or at ([www.benhamimages.com](http://www.benhamimages.com)).

**Calhoun Street Gallery**, 44 Calhoun Street, Bluffton. **Ongoing** - Featuring SC artists Michael Story and Jane Word, and local Bluffton artists Robert Sefton, Judith Beckler, Jay Kenaga, Linda Schwartz, Rima Bartkiene, as well as 18th & 19th century antique art, and many more. Hours: Mon.-Sat., 11am-5pm & Sun., noon-3pm. Contact: 843/837-4434 or at ([www.redschoolhouseantiques.com](http://www.redschoolhouseantiques.com)).

**Four Corners Art Gallery and Fine Framing**, 1263 May River Rd., Historic District, Bluffton. **Ongoing** - Featuring works by 12 artists with an especially local flavor. The works are in acrylic, oil, mixed media, pen and ink, pottery and wire sculpture. A real treat. We have a fine collection of custom picture frame mouldings and an experienced staff to work with anything from the unusual to the museum treated piece. Hours: Mon.-Fri., 10am-5:30pm & Sat., 11am-2pm. Contact: 843/757-8185.



Work by Rose Cofield

**La Petite Galerie**, 56 Calhoun Street, located in a lovely historic space on Calhoun Street in old town Bluffton. **Ongoing** - Featuring six of the area's favorite painters and a talented sculptor, this special collection of art is an ever-changing delight, with many pieces spilling out into the adjacent garden. In addition to the pastel, acrylic, oil and watercolor paintings you'll find lovely blown glass, whimsical and soulful clay pieces, wonderful outdoor sculpture, fish, turtles, birds and other fun garden art. The La Petite Galerie painters are Rose Cofield, Kristin Griffin, Sue Grilli, Murray Sease, Lauren Arsenault Terrett and Bill Winn; the sculptor is Wally Palmer. We have several excellent consigned artists as well, including Kathy Oda from Lady's Island with her beautiful glass, sweetgrass baskets and jewelry from Daurus Niles from the Charleston area and potter Mark Taylor from Hilton Head Island. Hours: Mon.-Sat., 11am-5pm & Sun., noon-5pm. Contact: ([lapetitegalerie.com](http://lapetitegalerie.com)).

**Maye River Gallery**, 37 Calhoun St., Bluffton. **Ongoing** - Featuring works by painters Cindy Chiappetta, Jo Dye, Anne Hakala, Judy Saylor McElynn, Audrey Montgomery, Joyce Nagel, Mary Grayson Segars, Barbara Snow and Kathy Tortorella work in a wide variety of mediums including Oil, Watermedia, Printmaking, Collage and Mixed Media, while expressing equally divergent points of view. Also part of the group, Marci Tressel, resident photographer; Earline Allen, porcelain artist; two jewelers: Susan Knight, silversmith and Paulette Bennett, lamp work bead artist, as well as Donna Ireton, contemporary basket maker and newest member, Laura Burcin, fiber artist. Hours: Mon.-Sat., 10am-5pm. Contact: 843/757-2633 or at (<http://www.mayerivergallery.com/>).

**Pluff Mudd Art**, 27 Calhoun St., Bluffton. **Ongoing** - Featuring works by Terry Brennan, Bob Berman, Peggy Carvell, Laura Cody, Diane Dean, Cheryl Eppolito, Ed Funk, David Knowlton, Marilyn McDonald, Daurus Niles, Linda Patalive, Jim Renauer, Patti Seldes, Michael Smalls, Ellen Blair Rogers, Steve White, Pat Wilcox, Carol Williams and Irene K. Williamson. Hours: Mon.-Sat., 10am-5pm. Contact: 843/757-5590.

**Preston Pottery Studio**, 10 Church Street, Bluffton. **Ongoing** - Featuring above average pottery since 1973 by Jacob Preston. Hours: Tue.-Sat., 10am-5pm. Contact: 843/757-3084.

**The Red Piano Art Gallery**, 40 Calhoun St., Suite 201, next to the Cottage Cafe and above Gigi's, enter at the left side of the building, off the courtyard, Bluffton. **Ongoing** - Presenting a broad collection of 19th and 20th century representational American paintings and sculpture. Landscapes, still lifes, genre scenes, figures and historical subjects by many of America's leading representational artists, impressionists and expressionists are available for discriminating private, corporate and institutional collectors. Hours: M-F, 9am-5pm; Sat., 10am-3pm or by appt. Contact: 843/785-2318 or at (<http://redpianoartgallery.com/>).

ALTERNATE ART SPACES - Bluffton **Burnt Church Distillery**, courtyard at 120 Bluffton Road, Bluffton. **Every 2nd Sun. of the month, noon - 4pm** - Lowcountry Made's Bluffton Artisan Market. Bluffton Artisan Market will include the following vendors: Lowcountry Lobster, Bluffton Candles, Handmade Beaufort, Sun Dog Pet Products, True South RH, 7th & Palm, BP Custom Carbon Furniture, Woodsman's Wife, Cottonwood Soap Co., Preservation Tree Art, Tout Sweet Macarons, Cupcakes 2 Cakes, Whip Savannah, Fire and Pine, Finch Sign and Design, and Palmetto Kettle Corn. For

more information, visit ([www.lcmade.com](http://www.lcmade.com)).

## Camden

**Artists' Attic**, 930 S Broad St., Camden. **Ongoing** - Featuring a new frame shop and Saturday hours, along with our regular gallery, and cooperative open studios shared by 8 professional artists working in various mediums. Including Dot Goodwin, Jane Hannon, Ann Starnes, Emily Houde, Kathy Redner, Benira Sutphin, Tari Federer, and Deb Maza. Commissions are accepted. Hours: Mon.-Fri., 10am-4pm; Sat., 10am-3pm and by appt. Contact: 803/432-9955 or e-mail at ([tarfederer@earthlink.net](mailto:tarfederer@earthlink.net)).

**Dovetails**, 645 Rutledge Street, Camden. **Ongoing** - Featuring custom bench crafted furniture by Jim Rose. Each piece is made by hand to the client's specifications. Jim works in a variety of woods including heart pine, walnut, cypress, maple, and cherry. Jim also works in exotic woods from South America and Africa. Visitors can watch individual pieces of furniture being built. Every piece has its own personality and becomes an instant heirloom. Hours: Mon.-Sat., 10am-5pm or by appt. Contact: 770/330-5000 or 803/446-3124.

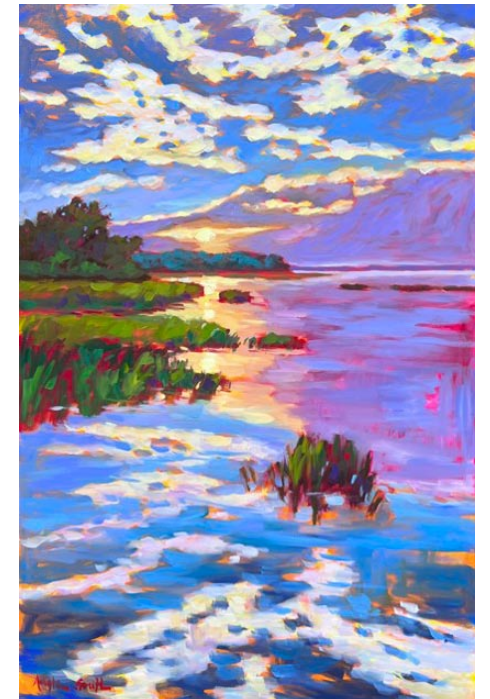


Work by Laurie McIntosh

**Laurie McIntosh Art**, 1014 Broad Street, Camden. **Ongoing** - Featuring works by Laurie McIntosh. McIntosh is an accomplished South Carolina artist and painter known for large bodies of thematic work inspired by her specific interests and life experiences. Hours: by appt. Contact: 803/319-2223 or at ([LaurieMcIntoshStudio.com](http://LaurieMcIntoshStudio.com)).

**Rutledge Street Gallery**, 508 Rutledge St., Camden. **Ongoing** - Featuring original works of art from regional and national artists including Clara Blalock, Elizabeth Barber, Anne Bivens, Yong Chu Chang, Marjorie Greene, Joyce Hall, Seth Haverkamp, Carrie Payne, John Pototschnik, Bob Ransley, Dennis Snell, Maci Scheuer, and many more. Chinese Antique Furniture Pieces. Hours: Tue.-Sat., 11am-5pm. Contact: 803/425-0071 or at ([www.rutledgestreetgallery.com](http://www.rutledgestreetgallery.com)).

## Charleston



Work by Betty Anglin Smith

**Anglin-Smith Fine Art**, 9 Queen Street, corner of Queen & State Streets, Charleston. **Mar. 3 - 20** - "2023: New Works by Betty Anglin Smith". A reception will be held on Mar. 3. from 5-8pm. **Ongoing** - Featuring original works by Betty Anglin Smith, Jennifer Smith Rogers, Tripp Smith, Shannon Smith Hughes, Kim English, Darrell Davis, Colin Page, Carl Plansky, and David & Jennifer Clancy. Hours: Mon.-Sat., 10am-5pm & Sun. 1-5pm. Contact: 843/853-0708 or at ([www.anglinsmith.com](http://www.anglinsmith.com)).

**Artizom Framing & Gallery**, 334 E. Bay Street, Suite J, Charleston. **Ongoing** - Featuring the contemporary artwork of Jackie and Charles Ailstock. Hours: Mon.-Fri., 10am-6pm, Sat. 11am-5pm, or by appt. Contact: 843/723-3726 or at ([www.artizom.com](http://www.artizom.com)).

**Atelier Gallery Charleston**, 153 King Street, Charleston. **Ongoing** - The gallery's focus is to support and promote a variety of artists, from the Southeastern region, while merging the clas-

*continued on Page 47*