

NC Commercial Galleries

continued from Page 61

Contact: 919-412-6803 or e-mail to (graceli-wang@gmail.com).

Litmus Gallery & Studios, 312 W. Cabarrus Street, (across the tracks from Amtrak Train Station) Raleigh. **Ongoing** - Regional emerging and/or established artists are featured every month with a reception from 6-9pm the first Friday of each month. Studios of resident artists are open for touring, viewing, and selling of art (paintings, sketches, sculptures, pottery, mixed media, photography, etc.). Hours: Thur., 10am-2pm or by appt. Contact: 919/571-3605 or at (www.litmusgallery.com).

Local Color Gallery, Carter Building, 22 South Glenwood Ave., Raleigh. **Ongoing** - The gallery has now grown into a women's artist cooperative 13 members strong. Hours: Thur., Fri., & Sat., 11am-3pm. Contact: 919/754-3887 or at (www.localcolorraleigh.com).

The Centerpiece Gallery, 7400 Six Forks Road, Suite 18, Raleigh. **Ongoing** - Representing over 30 fine artists & artisans, regional to nationally recognized. The number #1 gallery in the Triangle for art workshops. Great framing deals for artists and clients alike. Residential and Corporate Solutions. Hours: Tue.-Fri., 11am-6:30pm; Sat., 11am-6pm or by appt. Contact: 919/948-4886 or at (https://www.thecenterpiece.com).

311 Gallery and Studios, 311 Martin Street, Warehouse District, Raleigh. **Ongoing** - Featuring three exhibit galleries, studios by tenant artists, The Print Studio, and the meeting place for The North Carolina Printmakers. Hours: Thur. & Fri. noon-4pm; Sat., noon-6pm. Contact: 919/675-1602 or at (http://311gallery.com/).

The Centerpiece Gallery, 719 N. Person Street, Raleigh. **Ongoing** - Featuring fine art, custom framing and workshops. Hours: Tue.-Fri., 10am-5pm; Sat., 11am-6pm or by appt. Contact: 919/838-8580 or at (www.thecenterpiece.com).

Triangle Cultural Art Gallery, 8320 Litchford Road, Suite 138 Raleigh. **Ongoing** - The Triangle Cultural Art Gallery cultivates and exhibits art that reflects the triangle's diverse cultural heritage and artistic expression. Through the engagement of cultural art awareness and events, we help build our local community. Hours: Tue.-Fri., 10am-6pm & Sat., 9am-5pm. Contact: call 919/900-8055 or at (www.triangleculturalart.com).

Randleman

Joseph Sand Pottery, 2555 George York Road, Randleman. **Ongoing** - Featuring wood-fired, salt and ash glazed pottery by Joseph Sand at kiln openings held three times each year. Hours: by appt. only. Contact: 612/518-4051 or 336/460-0259 and at (http://www.jsspottery.com/).

New Salem Pottery, 789 New Salem Road, Randleman. **Ongoing** - Established in 1972, New Salem Pottery is owned and operated by Hal Pugh and Eleanor Minnock-Pugh. Hal and Eleanor produce a variety of original redware and stoneware pottery. Years of work at the wheel and the subtle evolutionary convergence of originality with past traditions make their pottery recognizable by its own style. The slip decorated redware pitcher shown above is illustrative of their art. Hours: Wed.-Sat., 10am-5pm. Contact: 336/498-2178 or at (www.newsalempottery.com).

Rutherfordton

Ornaments and Finer Welding, Inc., 142 West Court St., Rutherfordton. **Ongoing** - Featuring works by master artisan Tom Elfers. Hours: Mon.-Fri., 9am-5pm and Sat., 10am-5pm. Contact: 828/288-3001 or at (www.ornamentals1.com).

Salisbury/Spencer

Green Goat Gallery, 516 S. Salisbury Ave., just off I-85, across from the North Carolina Transportation Museum, Spencer. **Ongoing** - Housed in the historic 20th century Sands Building, the gallery features fine and folk art, photography, exquisite handcrafted functional crafts and jewelry, and eclectic recycled and found art by local, regional, and national artists. Hours: Tue.-Sat., 10:30am -5:30pm. Contact: 704/639-0606 or at (www.greengoat-gallery.com).

Pottery 101, 101 S. Main St., from I-85, take exit #76 (Innes St.) toward downtown - we are on the corner of Innes and Main, Salisbury. **Ongoing** - The destination for beautiful handcrafted pottery. Hours: Tue.-Fri., 10am-6pm &

Sat., 10am-5pm. Contact: 704/209-1632.

Rail Walk Studios & Gallery, 409 - 413 N Lee St., in the Rail Walk Arts District, Salisbury. **Ongoing** - Featuring works on display by Marietta F. Smith, Sharon Forthofer, Karen Frazer, Kenneth Koskela, Elizabeth H. McAdams, Julie Pontell and Keyth Kahrs. Each of the artists has a unique style and body of work. Visitors will find original art in oil, acrylic, watercolor, pastel, and other mediums, as well as sculpture, hand-made jewelry, pottery, and digital photography, making Rail Walk a great place to purchase a wide variety of original art in all price ranges. Hours: Thur.-Sat., 11am-4pm. Contact: 704/431-8964 or at (www.railwalkgallery.com).

Saluda Area

Heartwood Contemporary Crafts Gallery, 21 East Main Street, Saluda. **Ongoing** - Featuring contemporary works of handmade wearables, jewelry, paper, paintings, fine porcelain, stoneware, glass, metal and wood. Hours: Mon.-Sat., 10am-5pm & Sun., noon-5pm. Contact: 828/749-9365 or at (www.heartwoodsaluda.com).

Jim Carson's Studio/Gallery, 20-2 Main Street, Saluda. **Ongoing** - Carson is a Signature Member of the American Impressionist Society, a Signature Member of Oil Painters of America, a member of Plein Air Painters of the Southeast (PAPSE), and a member of the historic and venerable Salmagundi Club In New York City. Hours: Fri.&Sat., 11am-5pm, Sun. 1-5pm, also by appt or chance. Contact: 828/749-3702 or at (www.jimcarson.net).

Preserving A Picturesque America Gallery, at Saluda Studios, 144 Highway 176, Saluda. **Ongoing** - Browse the inspiring artwork of our wondrous mountain landscape, all created by local artists who love and want to protect this beautiful place we call home. A portion of all art sales benefits local environmental organizations whose primary focus is protecting and preserving our mountains, rivers, and natural recreation areas. Purchase a piece to beautify your home and help to protect our amazing mountain landscape. Hours: Wed.-Fri., noon-6pm; Sat.&Sun., 11am-5pm. Contact: 828/273-5383 or at (www.preservationthroughart.org).

Wood Berry Gallery, 66 E. Main Street, Saluda. **Ongoing** - Wood Berry Gallery is a contemporary art and fine craft gallery located in the heart of historic downtown Saluda. The gallery showcases artists who are unique in their fields. Each artist has their distinctive style and technique. Our craft selection range from blown and cast glass, ceramic sculpture, wood carvings and fine art jewelry. Hours: Tue.-Sat., noon-5:30pm & Sun., noon-4pm. Contact: 828/769-9034 or at (www.woodberrygallery.net).

Seagrove Area



Works by the Tea With Seagrove Potters

Throughout Seagrove, Mar. 9, from 10am-5pm - "Tea with Seagrove Potters," celebrates its 10th Anniversary. Sample teas and pastries while perusing the latest pots designed for serving tea at Blue Hen, Eck McCannless, Dean and Martin, From the Ground Up, Red Hare and Thomas potteries. Free event. Door prizes and special offers. Maps and information will be available at each shop. More information can be found at (www.TeaWithSeagrovePotters.com) or by calling 336/879-4145.

A. Teague Pottery/EJ King Pottery, 2132 Hwy. 705, Seagrove. **Ongoing** - Featuring works by several potters form the "village" with their traditional shapes of the Seagrove area. Contemporary, electric fired stoneware. Traditional glazes and melted glass glaze. Hours: Mon.-Sat., 10am-5pm. Contact: 910/464-5400.

A.R. Britt Pottery, 5650 Hwy, 220 S., Seagrove. **Ongoing** - Hand-turned/handmade traditional Seagrove style pottery, original formulated glazes, and functional stoneware in the tradition of Nell Cole Graves style by Aaron R. Britt. Hours: Tue.-Sat., 9am-5pm & Sun., noon-6pm. Contact: 336/873-7736 or at (www.seagrovepottery.net).

Albright Pottery, 6597 New Center Church Rd., Seagrove. **Ongoing** - Featuring traditional, salt glaze and red functional pottery by Arlie G. Albright. Hours: Tue.-Sat., 9am-5pm. Contact: 336/879-4209.

Anita's Pottery & Dogwood Gallery, 2513 Hwy. 705, Seagrove. **Ongoing** - Turning since 1987, Anita Morgan is best known for her miniature pottery, but also has many functional and decorative items. Glazes include cobalt blue, burgundy, hunter green, shiny black, yellow, rose pink, earthy brown, lime green and purple. Hours: Mon.-Sat., 10am-5pm. Contact: 336/879-3040 or at (www.anitaspottery.com).

Avery Pottery and Tileworks, 636 Potters Way, Seagrove. **Ongoing** - Finely crafted ceramic forms by Blaine Avery. Extraordinary vessels, unique hand-painted tiles. Hours: Tue.-Sat., 10am-5pm. Contact: 336/873-7923 or at (www.averypotteryandtileworks.com).

Ben Owen Pottery, 2199 S. Hwy. 705, Seagrove. **Ongoing** - Wood-fired, traditional and contemporary works using local clay by Ben Owen III. Colors ranging from Chinese red to Chinese blue. Hours: Tue.-Sat., 10am-5pm (closed in Jan.). Contact: 910/464-2261 or at (www.benowenpottery.com).



Work by Ben Owen III

Blue Hen Pottery, 247 West Main Street, Seagrove. **Ongoing** - Narrative pots for daily use. Wood-salt stoneware and colorful earthenware. Hours: Wed.-Sat., 10am-5pm by appt. Contact: 336/653-9551 or at (www.bluehenpottery.com).

Blue Stone Pottery, 2215 Fork Creek Mill Rd., Seagrove. **Ongoing** - Featuring traditional, functional stoneware pottery. Hours: Tue.-Fri., 10am-4pm & Sat., 9am-5pm. Contact: 336/879-2615 or e-mail at (audreyvalone@bellsouth.net).

Bulldog Pottery, 3306 Alt. 220, Seagrove. **Ongoing** - Bruce Gholson and Samantha Henneke collaborate to make graceful forms, and develop their own unique glazes. Expect distinctively unusual work at Bulldog Pottery. Hours: Tue.-Sat., 10am-5pm and call for Sun. and Mon. Contact: 910/428-9728 or at (www.bulldogpottery.com).

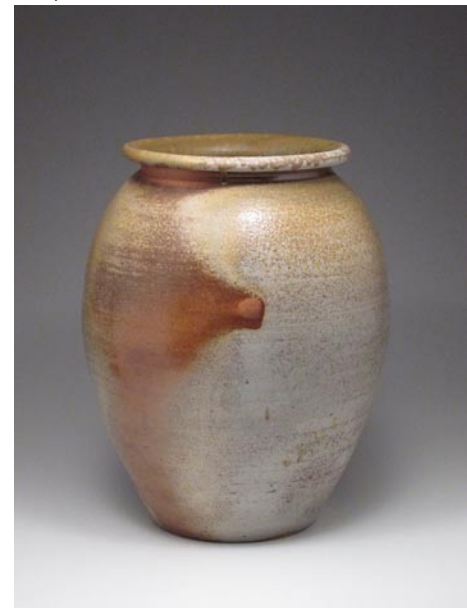
Cagle Road Pottery, 603 Cagle Rd., Seagrove. **Ongoing** - Featuring dinnerware and a wide variety of glazes. Electric, gas and wood-fired salt and ash glazes. Hours: Mon.-Sat., 8am-5pm. Contact: 336/879-2802 or e-mail at (caglerdpottery@yahoo.com).

Caldwell-Hohl Artworks, 155 Cabin Trail, Seagrove. **Ongoing** - Featuring contemporary stoneware, sculptures, large garden urns and contemporary fiber art. Hours: Mon.-Sat., 10am-5pm (call first). Contact: 336/879-9090 or at (www.caldwellhohl.com).

Callicutt Pottery, 5137 Seagrove Plank Rd., Seagrove. **Ongoing** - Featuring a good selection of functional stoneware in many colors including brown, black and white, green and burgundy, green and gold, black and burgundy and yellow by Gary Callicutt. Hours: Mon.-Sat., 10am-5pm. Contact: 336/873-7898 or e-mail at (gary51@rtelco.net).

Carolina Crockery Gallery, 326 Adams Road, (Just off of Hwy 705 between Whynot and Westmoore, or take Steeds Road exit from Hwy 73/74 or Hwy 220 and head towards Seagrove, just down the road from Sid Lucks!) Seagrove. **Ongoing** - The gallery is a multi-media gallery, offering handmade pottery from Morgan

Hatfield of Hatfield Pottery, Levi Mahan, and assorted potters from the area. We also carry wood art pieces including cutting boards and custom furniture from Joel Tucker of Southern Wood Creations. We have hand-blown glass from Nicuzzie Glass Designs (Nick Fruin and Suzanne Ririe), jewelry and fiber pieces from The Fuchsia Flamingo. Hours: Tue.-Fri., 2-5pm; Sat., 10am-5pm & Sun., noon to 5pm. Contact: 336/879-2426 or at (www.carolinacrockery.com).



Work by Chad Brown

Chad Brown Pottery, 2719 US 220 N., Seagrove. **Ongoing** - Featuring high fired stoneware, decorative and functional with ash and alkaline glazes, by Chad Brown. Hours: Mon.-Sat., 10am-5pm. Contact: 910/571-1691 or e-mail at (chadcameronbrown@yahoo.com).

Chris Luther Pottery, 4823 Busbee Rd., Seagrove. **Ongoing** - Featuring contemporary and functional pottery by Chris Luther, a 4th generation potter of Seagrove's Chriscoe pottery family. Hours: Tue.-Sat., 10am-5pm. Contact: 336/301-3254 or at (www.chrislutherpottery.com).

Chrisco Pottery, 1360 Hwy. 705, Seagrove. **Ongoing** - Featuring functional pottery including tableware, vases, and large platters. Hours: Mon.-Sat., 10am-5pm (Sept.-Dec.) & Tue.-Sat., 10am-5pm (Jan.-Aug.). Contact: 336/879-5272.

Cross Creek Pottery, 481 King. Rd., Seagrove. **Ongoing** - Featuring decorative and functional pottery by Terry and Vivian Hunt. Hours: Mon.-Sat., 8am-5pm & Sun., 1-5pm. Contact: 336/873-8425 or at (www.crosscreekpottery.com).

Crystal King Pottery, 2475 Hwy. 705, Seagrove. **Ongoing** - Featuring functional and decorative stoneware by Seagrove native and family-taught potter Crystal King. Face jugs, salt glazes, and folk art. Hours: Tue.-Sat., 10am-5pm. Contact: 336/879-6990 or at (www.CrystalKingPottery.net).

Daniel Johnston Pottery, 6265 Sugg Drive, Seagrove. **Ongoing** - Featuring pottery by Daniel Johnston. Hours: special events or by appt. Contact: 336/963-4845 or e-mail to (daniel@danieljohnstonpottery.com).

Dean and Martin Pottery, 7739 Nathan Lane, Seagrove. **Ongoing** - Jeff Dean and Stephanie Martin make contemporary, vibrantly glazed stoneware vessels, sculpture, and wall pieces. Hours: Tue.-Sat., 10am-5pm & Mon. by chance. Contact: 336/879-0683 or at (www.deanandmartinpottery.com).

Dirt Works Pottery, 1226 Hwy. 705, Seagrove. **Ongoing** - Featuring contemporary, sculptural and functional pottery; Raku, stoneware, wood-fired and salt glazed by Dan Tiece. Hours: Mon.-Sat., 9:30am-5pm. Contact: 336/873-8979 or at (www.dirtworkspottery.com).

Dixieland Pottery, 1162 Cagle Loop Rd., Seagrove. **Ongoing** - Hand-turned functional stoneware, colorful glazes to plain earth tones. Specialize in dinnerware, face jugs, etc. Hours: Mon.-Sat., 9:30am-5pm. Contact: 336/873-8463.

Donna Craven Pottery, 2616 Old Cox Rd., Asheboro. **Ongoing** - Featuring wood-fired salt-glazed, mostly traditional with some decorative and contemporary forms by Donna Craven. Hours: by appt. only. Contact: 336/629-8173.

Donna's Pottery Haven, 3432 Brower Mill Road, Seagrove. **Ongoing** - Featuring work by Donna Hertzog. Hours: Mon.-Sat., 10am-5pm. Contact: 336-879-4776 or e-mail to (hertzog63@gmail.com).

continued on Page 63