

# Clemson University in Clemson, SC, Offers Annual BFA Exhibition

Clemson University in Clemson, SC, will present the annual *BFA Senior Exhibition*, on view in the Rudolph E. Lee Gallery, from Apr. 8 - 15, 2021.

The exhibition will showcase works by sculptor by Austin Terault, drawings by Satra Muhammad, Megan Hammel, and Bailey Phillips, photographs by Nicole Cantrell, Emerson Packer, and Madeline Watkins, prints by Kat Eaves, and ceramics by Sam Taylor.

Photographer Nicole Cantrell who hails from Lancaster, SC, states, "I like to push the boundaries of what is considered the perfect woman and what society thinks a woman should do". Her works explore issues surrounding body positivity and "how as women we should come together to fight society's ideal woman stereotype."

Metamorphizing through her various experiences printmaker Kat Eaves writes, "What started with resentment and hatred towards a place that felt so backwards, changed to apathy, which evolved to an empathy and became a better understanding of a place that is often neglected." Eaves goes on to explain "My prints explore contemporary southernness and my place within the regions diverse history, culture, and landscape."

Drawing senior Megan Hammel from Clemson, SC, utilizes stories from different cultures and histories to spark inspiration for her creative works. About her work she states, "My personal works have always been heavily character-centric, depicting mythical and imaginary creatures and/or characters from stories I have read or which came to life in my own mind." Her work builds from known stories to create new and unfamiliar narratives.

Hailing from Bamberg, SC, drawing senior Satra Muhammad creates artwork that sets a visual representation of expressing emotions through lines, pattern, and texture. She uses music as a major inspiration for her artwork, exploring the feelings from each genre. She writes, "I believe knowing your present and past are key in guiding your future. My work veers towards personal aspects relevant to past and present life experiences and gives a broadened perspective of my self-identity."



Work by Emerson Packer

Photographer Emerson Packer's work embodies femininity, sensuality, and the natural flow of tranquility. When describing her creative practice she says, "My work isn't focused on a single image per se, but how a group of images communicates an experience...my goal is to investigate and get inside that experience."

Drawing senior Bailey Phillips from Greenville, SC, is inspired by diving into topics of reflection and how artists use reflection in both a physical and conceptual ways. When talking about her work she writes, "My process entails working from photographs, which I stage. Often, I use multiple photos, incorporating old photos with current photos."

Sam Taylor's work explores how growing up in a digital age has affected her and



Work by Kat Eaves

her peers and wants to inspire her viewers to go towards a way of life that holds the physical and digital realities in balance. She states, "The designs of my ceramic forms reference the shared visual language of my generation, developed through decades of instant communication, social media trends, and memes."

Greenville, SC, artist Austin Terault draws from his personal challenges with mental health and addiction as a catalyst for his work. Through introspection and vulnerability, he aims to create work that can help his audience find comfort in their own experiences. About his work Terault writes, "I am creating three cocoons that use heavy use of material to draw a comparison between the boundaries I set up for myself and how they become a negative impact on me."

Photography senior Madeline Watkins is originally from Maryville, TN. Her work explores her early life while living in Southern Appalachia where she was inspired by the Smoky Mountains. When discussing her work Watkins states, "I want to connect history with art and visualize how our experiences inspire it. To do so, I use photography to capture the land and faces of ancestral belonging."

This exhibition invites the viewer to witness different perspectives of personal realities and how the past and present work to define our internal and external experiences. Works on view at the Spring *BFA Senior Exhibition* reflect issues, concerns and experiences of emerging arts professionals of the South Carolina Upstate. The exhibit encourages visitors to set aside what their assumptions and explore perspectives created from a Covid-19 experience.

Lee Gallery remains committed to providing quality exhibitions while addressing the challenges of the COVID-19 pandemic. Following Clemson University guidelines, the Lee Gallery is currently closed to the general public. However, the Gallery is open for visits by students, faculty and staff of Clemson University. Images from the exhibition can be viewed by accessing the Clemson Visual Arts Facebook, Instagram and Twitter.

Campus galleries and showcase spaces include, Lee Gallery in Lee Hall, the Acorn Gallery in Lee Hall II, College of Architecture Arts and Humanities Dean's Gallery in Strode Tower, the lobby showcase at Brooks Center for Performing Arts and in Sikes Hall on the ground floor.

The Lee Gallery showcases regional, national and international artists exploring a broad range of ideas, materials and creative processes. In partnership with academic programs and university initiatives the Lee Gallery develops exhibitions that examine contemporary issues and prompt discourse.

For further information check our SC Institutional Gallery listings, contact Denise Woodward-Detrich, Lee Gallery Director by calling 864/656-3883 or visit (<http://www.clemson.edu/centers-institutes/cva/>).

# Arts Council of York County in Rock Hill, SC, Offers ACYC Members Show

The Arts Council of York County in Rock Hill, SC, is presenting the *ACYC Members Show*, featuring works by 38 regional artists, on view in the Dalton and Perimeter Galleries at the Center for the Arts, through Apr. 25, 2021.

The Arts Council's inaugural *Members Show* features bold, new works of art by regional artists who are members of the Arts Council of York County. The works on display are as diverse as the artists themselves with paintings, sculpture, photography, and mixed media pieces. Artist members range from internationally recognized professionals to student and emerging artists.

It is through the support of its members that the Arts Council of York County is able to fulfill its mission to create arts programming that encourages education, economic development and arts advocacy through unique art experiences that engage the community to make York County

a regional arts destination.

While at the Center for the Arts, please wear a facial covering at all times and maintain social distancing. The capacity of the building is limited to 15 visitors. Please schedule an appointment to visit the galleries in advance. Please be advised that the facility may be closed when the capacity reaches the maximum stated limit, for cleaning, and for private appointments. For COVID-19 Visitation Guidelines visit (<https://www.yorkcountyararts.org/visit>).

The Center for the Arts is located on East Main Street, in the Cultural District of Downtown Rock Hill, a state-recognized cultural district.

For further information check our SC Institutional Gallery listing, call the Council at 803/328-2787, e-mail to ([arts@yorkcountyararts.org](mailto:arts@yorkcountyararts.org)), or visit (<http://www.yorkcountyararts.org>).

# Bechtler Museum of Modern Art in Charlotte, NC, Offers Major Look at Women Artists

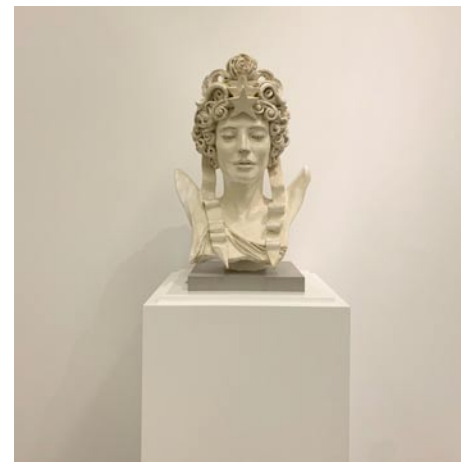
The Bechtler Museum of Modern Art in Charlotte, NC, is presenting *Twentieth Century Women*, an exhibition that focuses exclusively on the artistic achievements of women in the collections of the Bechtler museum and Bechtler family, on view in the Museum's Fourth-Floor Gallery, through Sept. 26, 2021.

Featuring over 100 art works by 22 artists, this exhibition explores a century of artistic production and the ways that women fit into, challenge and redefine the narrative of modern art. Alongside paintings, sculptures, drawings, collages, prints, and artists' books, biographical information and material from the museum's library and archive are featured. These materials illuminate the incredible lives of the women featured in this exhibition and celebrate their contributions to twentieth-century modernism and its legacies.

These items include personal correspondence which emphasize the intimate nature of the Bechtler collection and highlight the personal relationships between the Bechtler family and the artists they championed.

Artists featured in the exhibition include: Anna-Eva Bergman (Swedish, 1909-1987), Lisbeth Bissier (German, 1903-1989), Audrey Flack (American, b. 1931), Cornelia Forster (Swiss, 1906-1990), Maud Gatewood (American, 1934-2004), Maja Godlewska (Polish, b. 1965), Lee Hall (American, 1934-2017), Barbara Hepworth (British, 1903-1975), Vera Isler-Leiner (German, 1931-2015), Gillian Jagger (British, 1930-2019), Warja Lavater (Swiss, 1913-2007), Meret Oppenheim (German, 1913-1985), Betty Parsons (American, 1900-1982), Alicia Penalba (Argentine, 1913-1982), Niki de Saint Phalle (French, 1930-2002), Isabel Quintanilla (Spanish, 1938-2017), Germaine Richier (French, 1904-1959), Bridget Riley (British, b. 1930), Katherina Sallenbach (Swiss, 1920-2013), Hedda Stern (Romanian, 1910-2011), Elizabeth R. Turk (American, b. 1961), and Maria Helena Vieira da Silva (Portuguese, 1908-1992).

Highlights of the exhibition include the work of Germaine Richier, a French artist best known for her human-animal hybrid bronze sculptures that often-incorporated themes in classical mythology. The exhibition includes her monumental 1946 bronze *La Sauterelle (The Grasshopper)*, and a selection of aquatints made to ac-



Audrey Flack, "Civitas", 1990

company an edition of Arthur Rimbaud's *A Season in Hell*.

Other highlights include a selection of folded-accordion artists books by Swiss artist and illustrator Warja Lavater, who created fantastical lyric narratives using pictograms instead of words to retell classic fairy tales. A never-before-exhibited series of painted-wood sculptures by American artist and art dealer Betty Parsons will be included. Parsons is often referred to as "the den mother of Abstract Expressionism" for her early support of the Abstract Expressionist Movement at her art gallery.

For the first time, the museum will exhibit a tapestry by Lisbeth Bissier, a German self-taught weaver who opened her own textile factory in the 1940s and financially supported herself and her husband, Julius Bissier through her work.

The Bechtler Museum of Modern Art is named after the family of Andreas Bechtler, a Charlotte resident and native of Switzerland who assembled and inherited a collection of more than 1,400 artworks created by major figures of 20th-century modernism and donated it to the public trust. The Bechtler collection comprises artworks by seminal figures such as Alberto Giacometti, Joan Miro, Jean Tinguely, Max Ernst, Andy Warhol, Alexander Calder, Le Corbusier, Sol LeWitt, Edgar Degas, Nicolas de Stael, Barbara Hepworth and Picasso. Only a handful of the artworks in the Bechtler collection have been on public view in the United States.

For further information check our NC Institutional Gallery listings, call the Museum at 704/353-9200 or visit ([www.bechtler.org](http://www.bechtler.org)).

The deadline each month to submit articles, photos and ads is the 24th of the month prior to the next issue. This will be Apr. 24th for the May 2021 issue and May 24 for the June 2021 issue. After that, it's too late unless your exhibit runs into the next month. But don't wait for the last minute - send your info now. And where do you send that info? E-mail to ([info@carolinaarts.com](mailto:info@carolinaarts.com)).