

SC Institutional Galleries

continued from Page 36

artist Ming Smith's unparalleled and under-recognized career from the early 1970s through the present. As Smith's first solo exhibition at a major institution, it encompasses a multitude of artistic expressions to represent her vibrant and multi-layered practice, which is grounded in portraiture, as it amplifies the heartbeat of Black life in the United States. Drawn from the full complexity of Smith's oeuvre, "Feeling the Future" places works from the artist's five decades of creation in conversation with one another, while it embraces the cultural movements she witnessed and participated in. Exploring themes such as Afrofuturism, Black cultural expression, representation and social examination, the exhibit offers a guided tour into unperceived moments of life as captured by one of the most profoundly gifted artists of her generation. **Ongoing** - The IAAM, which sits at the site of Gadsden's Wharf - one of the nation's most prolific former slave trading ports - includes nine core exhibition galleries and a special exhibition gallery, as well as a "floating" gallery that weaves contemporary art throughout the museum. The museum will open with more than 700 artifacts dating from 17th century to contemporary objects, alongside 1000 image and media collection pieces - all of which help connect the African American journey to its roots and connections to African and African Diaspora communities and cultures. The museum also houses the Center for Family History, a world-class genealogy and ancestry resource center, which began hosting genealogy classes and workshops in 2020. Admission: Yes. In an effort to increase access and decrease obstacles to participating in arts and cultural experiences, International African American Museum (IAAM) has joined Bank of America as a new partner in the bank's Museums on Us program, which offers free general admission on the first full weekend of each month to Bank of America, Merrill and Bank of America Private Bank credit and debit cardholders, at some of the nation's greatest museums and cultural attractions, which now includes IAAM. Hours: Tue.-Sun., 10am-5pm (last entry at 4pm). Contact: 843/872-5352 or at (iaamuseum.org).



Work by Tyrone Geter

Redux Contemporary Art Center, featuring Redux Studios, 1056 King Street, Charleston. **Main Gallery, Through May 18** - "Brave New World: A Solo Exhibition of Tyrone Geter," curated by Leila Davenport Ross of Show & Tell Art and Design.. "Brave New World" is a showcase of Geter's recent mixed media large scale charcoal drawings, and accompanying detailed sculptural installations. Geter's work shows both the harsh truth of the subject's reality of bearing the brunt, as well as their strength and power to adapt, providing the audience with a sense of awe of their strength and with their evolution and hope for our collective future. **Gallery 1056, Through May 18** - "Icons and Other Stories: Artwork by Susan Vitali". **Lightning Residency Gallery, Through May 18** - "Pieces of US: Mariah Bintliff and Zach Knapp". **Ongoing** - In May, 2017, Redux relocated to 1056 King Street with 38 studios, three galleries, a larger print shop, classroom, dark room, and photo studio. Hours: Tue.-Fri., 11am-4pm, or by appt. Contact: 843/722-0697 or at (www.reduxstudios.org).

Saul Alexander Gallery, Charleston County Public Library, 68 Calhoun St., Charleston. **Saul Alexander Gallery, Apr. 1 - 30** - "The Edge of Time II" by Meyriel Edge. After a fulfilling career teaching art, Meyriel Edge returned to being a full-time artist and, in 2015, joined Fabulon Gallery where she had a successful show, "The Edge of Time." Since then, her work has devel-

oped and matured thanks to challenging commissions, the discovery of online competitions during lockdown, and a constant supply of thoughts, memories and ideas that demand attention. Hours: Mon.-Thur., 9am-8pm; Fri. & Sat., 9am-6pm; and Sun. 2-5pm. Contact: Megan Summers at 843/805-6946 or at (www.ccpl.org).



(left) Gabriel E. Manigault, curator, 1873-1899, oil on canvas by John Stolle, 1894. (right) Museum collections on exhibit at the College of Charleston, c. 1900, including the North Atlantic right whale skeleton that now hangs in the Museum's main lobby.

The Charleston Museum, 360 Meeting Street, Charleston. Founded in 1773, is America's first museum. **Historic Textiles Gallery, Through Sept. 15** - "The Art of Abstraction: Modernism in Quilting". Quilting has always been a means of creative expression, uniting color and pattern to form an object of purpose. Just as paint on canvas functions, the fabric pieces often work as artistic parameters, testing the visual acuity and imagination of the individual. We are pleased to announce a collaborative exhibition with the Gibbes Museum of Art in which abstract artwork will be displayed alongside the Museum's quilts to showcase the artistic beauty of both mediums. **Lowcountry Image Gallery, Ongoing** - "A Historical Timeline of America's First Museum: 1773 - 2023". This timeline highlights the rich history of The Charleston Museum from its beginning to the present. Selected events from the past 250 years are showcased using iconic photographs from the Museum's Archives. The forebear of The Charleston Museum was founded on January 12, 1773, by members of the Charleston Library Society, when South Carolina was still a British colony. Although the form and substance of the institution has changed over two and a half centuries, its general purpose at the time of its creation - to educate - is still central to its mission today. Throughout its history, the Museum has experienced wars, natural disasters, and most recently a worldwide pandemic, yet it has continued to thrive. Today, The Charleston Museum houses more than 2.4 million objects, and each year over 100,000 people, from around the world and from all walks of life, come here to learn. We invite you to enjoy this timeline highlighting selected events from the Museum's rich past, from its beginning to the present, with iconic images from the Museum's Archives. **Ongoing** - Featuring the most extensive collection of South Carolina cultural and scientific collections in the nation, it also owns two National Historic Landmark houses, the Heyward-Washington House (1772) and the Joseph Manigault House (1803), as well as the Dill Sanctuary, a 580-acre wildlife preserve. Admission: Yes. Hours: Mon.-Sat., 9am-5pm & through the Summer months, Sun., 1-5pm. Contact: 843/722-2996 or at (www.charlestonmuseum.org).

ALTERNATE ART SPACES - Charleston **Ashley River Tower**, Public area at Medical University of South Carolina, Charleston. **Ongoing** - "Contemporary Carolina Collection @ Ashley River Tower," featuring the largest collection of original, contemporary South Carolina art on permanent display, including 885 works by 53 talented artists, sculptors and photographers in South Carolina. Artists included are: Lucille Akinjobe, Jack Alterman, Thomas Blagden, Jr., Carl Blair, Patti Brady, Keith Brown, Julia Cart, Eva Carter, Jocelyn Châteauevert, Lese Corrigan, Townsend Davidson, Linda Fantuzzo, Buddy Folk, Squire Fox, Mary Edna Fraser, Cassandra Gillens, Anthony Green, Jon Holloway, Ann Hubbard, Lisa Salosaari Jasinski, Erik Johnson, Kim Keats, Arianne King Comer, Kit Loney, Paul Mardikian, Nancy Marshall, Paul Matheny, John McWilliams, Sue Middleton, Marge Moody, Gordon Nicholson, Jane Nodine, Marcelo Novo, Karin Olah, Matt Overend, Rick Rhodes, Ed Rice, Molly B. Right, Susan Romaine, Kristi Ryba, Virginia Scotchie, Laura Sponge, Tom Stanley, Christine Tedesco, Colleen Terrell, Leo Twiggs, Tjelda Vander Meijden, Mary Walker, Sue Simons Wallace, Joe Walters, Sam Wang, Enid Williams, Manning Williams, and Paul Yanko. Hours: daily, 8:30am-5pm. Contact: Kathleen Ellis, Director of National Communications, MUSC, at 843/792.5602 or e-mail at (ellisk@muscedu).

Charleston City Night Market, between Church Street and East Bay Street, Charleston. **Fri. & Sat. nights, from Mar.- Dec.** - "2024 Charleston City Night Market". We are the largest art market in the Southeast and have won Charleston's choice for Local Art in 2018 and 2019, 2020, 2021 & 2022. The Night Market began as an Artisan/Hand Crafted only market in 2012, and now has over 200 various artists represented. This dynamic and diverse group has become an integral part of the Charleston City Market. Hours: Fri. & Sat., 6:30-10:30pm. For info e-mail to (chasnightmarket@gmail.com).

The Old Slave Mart Museum, 6 Chalmers Street, Charleston. **Ongoing** - The Museum recounts the story of Charleston's role in this interstate slave trade by focusing on the history of this particular building and site and the slave sales that occurred here. Hours: Mon.-Sat., 9am-5pm. Contact: The Office of Cultural Affairs at 843/958-6467 or at (http://www.charlestonarts.sc/).

Clemson Area

Clemson Area African American Museum, 214 Bulter Street, Clemson. **Through May 31** - "Where I'm From," an art exhibition that provokes thought and deep reflection of Bachelor of Fine Arts (BFA) alumna Felicia Gibbes '93. This compelling showcase offers a unique visual exploration of Southern upbringing, unveiling unnoticed aspects of life. Hours: Tue. - Fri., 10am-4pm and 1st Sat. of the month from 11am-5pm. Contact: at (CAAAM.org).

Lee Gallery, 1-101 Lee Hall, Clemson University, 323 Fernow Street, Clemson. **Apr. 3 - 11** - "BFA Senior Exhibit Spring 24 Twenty #1". A reception and artist Talks will be held on Apr. 5, 5-7pm. **Apr. 17 - 25** - "BFA Senior Exhibit Spring 24 Twenty # 2". A reception and Artist-Talk will be held on Apr. 19, from 5-7pm. **Lee Gallery Hallway, Apr. 24, from 10am-5pm** - Spring Ceramic Studio Sale". A large selection of functional works by students and faculty will be offered at various price points. Hours: Mon.-Thur., 9am- Noon, then 1-4:30pm. Contact: Denise Woodward-Detrich, Lee Gallery Director by calling 864-656-3883 or at (www.clemson.edu/centers-institutes/cva/).

The ARTS Center, 212 Butler St., Clemson. **Ongoing** - Featuring works by local and regional artists. Hours: Mon.-Thur., 10am-5pm & Fri., 10am-2pm. Contact: 864/633-5051 or at (www.explorearts.org).

ALTERNATE ART SPACES - Clemson **CAAH Dean's Gallery**, 101 Strode Tower, Clemson University, Clemson. **Through Apr. 18** - "Alumni Works". Hours: Mon.-Fri., 8am-4:30pm. Contact: call Denise Woodward-Detrich, Lee Gallery Director at 864/656-3883 or at (www.clemson.edu/centers-institutes/cva/).

Cooper Library, 4th floor, Clemson University Campus, 116 Sigma Drive, Clemson. **Through Apr. 12** - "Ink Travels: MFA Alumni Selections". Hours: regular library hours. Contact: call Denise Woodward-Detrich, Lee Gallery Director at 864/656-3883 or at (www.clemson.edu/centers-institutes/cva/).

Madren Conference Center, Clemson University, Clemson. **Ongoing** - Featuring wood and steel bird carvings by Grainger McKoy. Hours: regular building hours. Contact: Peter Kent at 864/656-0382 or e-mail at (peter.kent@clemsonews.clemson.edu).

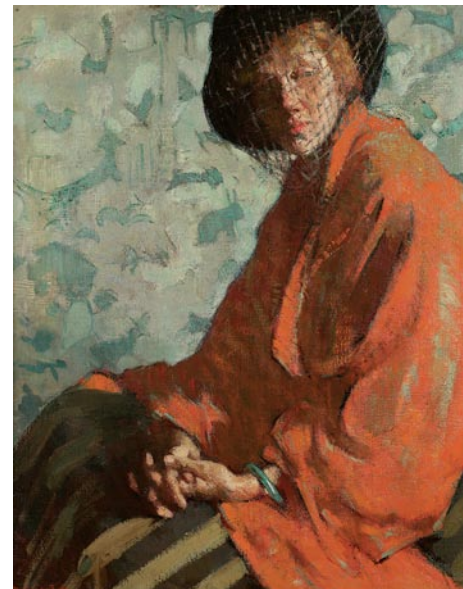
The Fran Hanson Discovery Center, South Carolina Botanical Garden, Clemson University, Clemson. **Featured Artists Gallery, Ongoing** - Featuring works by Nancy Basket, Sue Figliola, Sue Grier, Sandy King, Jo Ann Taylor and Phil Garrett, on a rotating basis. **Elizabeth Belser Fuller Gallery, Ongoing** - This collection of watercolors, mixed media and pen & ink drawings was generously donated by a dear friend of the SC Botanical Garden, Elizabeth Belser Fuller. This incredible collection ranges from 1947 to 1992. New pieces have been added this year in celebration of Belser's 97th birthday. Hours: Mon.-Sat., 10am-4pm. Closed University Holidays and Home Football Game Saturdays. Contact: 864/656-3405 or at (www.clemson.edu/scbg/).

Clover

Gallery 120, 120 Bethel Street, Clover. **Ongoing** - Established in January 2015, Gallery 120 was created as a community art gallery with a mission to build a strong vibrant arts community and encourage growth and exposure of professional and emerging artists while educating our community in the Fine Arts. Gallery 120 is a center where partnerships with other art groups serve as an opportunity for community involvement and showcase a variety of artwork, with a special focus on student art. Gallery 120 exhibits change monthly with professional and student artists. The

gallery also offers a First Friday public art reception, held on the first Friday of every month from 6-8pm. We exhibit artwork created by artists who are professional and whose works are exceptional in skill and presentation. We showcase student artwork crafted by students in our schools, from the elementary level through high school level. The gallery also showcases works of emerging artists, whether they are hobbyists in drawing or painting or some other fine art medium. Hours: Mon.-Fri., 8am-5pm. Contact: 803/222-9493 or at (www.Clovergallery120.org).

Columbia Area



"Jade" 1918, Gertrude Fiske, Oil on canvas. 29 3/4 x 23 3/4 in., National Academy of Design, New York, NY

Columbia Museum of Art, Main & Hampton Streets, Columbia. **Through May 12** - "Interior Lives: Modern American Spaces, 1890 - 1945". Through the lenses of interior scenes and material culture, Interior Lives explores the ways everyday Americans lived, worked, played, and evolved their identities in the first half of the 20th century. Homes, workplaces, and the spaces between were newly envisioned in response to socioeconomic and technological shifts. American artists, many of whom continued to work in a representational style, bore witness to the inception of a modern world and interpreted it as it manifested before them. The works on view in this exhibition - primarily portraits, genre scenes, and still lifes - are often modest in scale and humble in subject yet penetrating in their cultural and psychological implications. **Through May 12** - "Darrel Ellis: Regeneration". Over the course of his career, Darrel Ellis developed a distinct studio practice that merged the formal vocabularies of drawing, photography, painting, and printmaking to redefine Black male identity and family within the constructs of art history and mainstream culture. Ellis was influential during his life, inspiring the work of other artists and participating in more than 20 group exhibitions in New York and Europe before his career was cut short in 1992 by his death at the age of 33 due to an AIDS-related illness. To produce his groundbreaking images, Ellis shifted across a wide range of media, employing painting, printmaking, drawing, sculpture, and collage to generate endless variations on a single image. **Through May 12** - "Interior Lives: Modern American Spaces, 1890 - 1945". Through the lenses of interior scenes and material culture, Interior Lives explores the ways everyday Americans lived, worked, played, and evolved their identities in the first half of the 20th century. Homes, workplaces, and the spaces between were newly envisioned in response to socioeconomic and technological shifts. American artists, many of whom continued to work in a representational style, bore witness to the inception of a modern world and interpreted it as it manifested before them. The works on view in this exhibition - primarily portraits, genre scenes, and still lifes - are often modest in scale and humble in subject yet penetrating in their cultural and psychological implications. **Through June 30** - "Sergio Hudson: Focused on the Fit". This exhibition showcases the remarkable moments of a designer who fell in love with fashion at 5 years old while living in Ridgeway, South Carolina, and has become one of the biggest names in the industry. Sergio Hudson's high-profile clients include Beyoncé, Michelle Obama, Serena Williams, Rihanna, Kamala Harris, Kendall Jenner, Issa Rae, Rachel Brosnahan, and Keke Palmer, a close friend whom he has called a muse. Hudson's philosophy is that fashion should be for everyone and include everyone. He designs to empower the wearer and often includes a nod to the '90s of his youth. See eight signature garments from key moments in his revolutionary career alongside more than 20 sketches and drawings exploring his career from the early days winning Bravo's *Styled to Rock* in 2013 up through the present day. **Through Jan. 1, 2025** - "The Collection". Come see the newly organized collection. We've gathered ancient and modern works of art, together in one space, that explore our shared archetypes, myths, and ideals. **Galleries 5 & 6, Ongoing** - "Modern &

continued on Page 38