

NC Institutional Galleries

continued from Page 59

& Sat.-Sun., 2-5pm. Contact: 919/760-8414 or e-mail to (gallery@meredith.edu).

Sertoma Arts Center, 1400 Millbrook Road, located in the heart of Shelley Lake Park, Raleigh. **Ongoing** - Sertoma Arts Center is a fun, creative destination for all ages, offering classes and workshops in painting, drawing, photography, pottery, performing arts, printmaking, jewelry, fibers studio, fitness, and more, along with exhibitions, studio spaces, group support, and community outreach. Sertoma's outreach partners include the North Carolina Arts Council and Wake County Public School System. It is part of a learning community of 11 arts organizations that collaborate to advocate for and improve access to the arts for people with disabilities. This collective is funded in part by the City of Raleigh Arts Commission and the United Arts Council of Raleigh and Wake County. Hours: Mon.-Thur., 9am-10pm; Fri., 9am-1pm; Sat., 10am-5pm; & Sun., noon-5pm. Contact: 919/996-2329 or e-mail to (sertomaartscenter@raleighnc.gov).

ALTERNATE ART SPACES - Raleigh
Duke Energy Center for the Performing Arts, 2 East South Street, Raleigh. **Ongoing** - The Betty Ray McCain Gallery is nestled within the Duke Energy Center for the Performing Arts, and is the proud home of the North Carolina Artists Exhibition, a collection of work by state artists, selected each year by respected local museum and gallery directors from hundreds of submissions. For info contact Susan Garrity by e-mail at (artistsexhibition@gmail.com). Hours: during performances or call. Contact: call 919/831-6060 for hours and directions.

Rocky Mount

Maria V. Howard Arts Center, Imperial Centre for the Arts and Sciences, 270 Gay Street, Rocky Mount. **Through Apr. 28** - "25th Annual Hand-crafted Juried Art Exhibition," juried by Marlene True, Executive Director of the Pocosin Arts School of Fine Craft. **Through Apr. 28** - "Destination: Daydream," featuring works by Artist Robyn Scott. **Through Apr. 28** - "Curtain Calls and Applause: Exhibit Celebrating 66 Years of Rocky Mount Community Theatre". Hours: Tue.-Sat., 10am-5pm & Sun., 1-5pm. Contact: 252/972-1163 or at (www.imperialcentre.org/arts).

Rutherfordton

Rutherford County Visual Arts Center & Gallery, 160 N. Main Street, at the intersection of W. Court St., Rutherfordton. **Ongoing** - Offering a changing exhibit of 2D and 3D art including oils, watercolor, scratchboard, calligraphy, fiber, wood, glass, pottery and fine craft by local artists/fine crafters. Hours: Tue.-Sat., 10am-3pm. Contact: 828/288-5009 or at (www.artatthevac.com).

Salisbury/Spencer



Works by Paula Smith

Waterworks Visual Arts Center, 123 E. Liberty St., in the East Square Arts District, located one block East of Main Street, across from the Salisbury Police Station, Salisbury. **Through May 24** - "ART for ALL: Engage. Connect. Participate," including the exhibits: "Imaginary View," featuring photographs by Giordano Angeletti; "Between Will and What Will Be," featuring paintings by James Keul; and "HerStory," featuring functional and sculptural ceramics by Paula Smith. On Mar. 19, from 5-6:30pm James Keul will give a gallery talk. On Apr. 19, from 3-4:30pm, Paula Smith will give a gallery talk. The photographs that comprise "Imaginary Views" started with images of dollhouse miniatures (doors, stairs, and windows) set against Southern vernacular architecture. Using toy-like reproductions to inhabit unexpected environments allows the viewer's imagination to take hold. Visualizing a world reduced to a scale one twelfth the size of our everyday reality, where a landing on a staircase may become a tree-lined avenue or a leaf may be the same scale as a park bench. These images refer to ideas of place, belonging, refuge, escape, and fantasy. The spaces imagined through these images are reverie; Fantasies of places that never were, tinged with nostalgia and wistfulness for what never was or could be—illusions that seek to conflate reality and hope to become real or surreal. Since the inception of the project, these images have grown to include diorama elements such as

classical ruins and have escaped the confines of the safe space of the "home." The more recent images are against and within nature and may be combined with famous historic views of Italy. In "Between Will and What Will Be" by James Keul, this series, which I have been developing and expanding over the past ten years, is an exploration of humankind's relationship with nature, the way in which we are prepared to deal with our environment as it relates to human-caused climate change. One piece, titled "Fish in Troubled Waters", reflects on difficulties faced by people living on islands who, while often not big contributors to the problem, are often the first to be affected by a rise in sea levels as a result of a warming planet. This was inspired in part by nine months I spent living in Western Samoa as a youth. The idea for the "Sweet Sixteen" series came to Paula Smith in 1999, my daughter had a "My Size Barbie" it was a gift from Santa in 1993. We had moved the doll up to the attic, but the whole idea was germinating in my head for years. My daughter had known that I was not a fan of Barbie dolls, the whole-body image thing, those dolls go against my grain. I am a feminist. So, she asked Santa for the doll, not me. My life and art involve around my family, so a lot of my inspiration comes from home. Anyway, back to the "My size Barbie" concept, I guess I saw it standing in the attic and thought I can make a series based on just the torso of this doll. So, I took the doll, after getting permission from my daughter, to the band saw and cut the head, arms and legs off the torso and made a mold of just the torso. **Ongoing** - At Waterworks, all exhibitions are free to see (donations gladly accepted). The galleries and Museum Store are open Monday-Friday, 10 am-4 pm. An elevator, braille signage, bench seating in all galleries, and wide hallways make the museum accessible to everyone. Visitors can experience the gated sensory garden, as well as sculpture gardens around the building. Waterworks offers three rotating exhibitions a year, K-12 Student exhibitions, and art classes for students ages 18 months to 100. Keep abreast of exhibitions, events, art classes, and new art for sale in the Museum Store. Hours: Mon.-Fri., 10am-4pm, (business hours M-F, 9 am-5 pm). Contact: 704/636-1882 or at (www.waterworks.org).

Saluda

ALTERNATE ART SPACES - Saluda
Saluda Library, Polk County Public Libraries, 44 W. Main, Saluda. **Through Apr. 13** - Julie Arrington has called Saluda home for over 40 years. Inspired by her love of nature and gardening, Julie uses natural flora in her one-of-a-kind creations. Rustic wood, dried mushrooms, mosses, and recycled rusty tin are just a few of the supplies used to create her unique birdhouses, fairy dwellings, dried floral wreaths, and pine knot angels. Special orders can be created by request. Hours: Mon.-Fri., 9am-6pm & sat., 9am-1pm. Contact: Saluda Library Manager Bob McCall at 828/894-8721 x294, e-mail to (bmccall@polklibrary.org) or at (https://www.polklibrary.org/).

Seagrove Area

Carolina Bronze Sculpture Garden, Carolina Bronze, 6108 Maple Springs Road, Seagrove. **Ongoing** - The Carolina Bronze Sculpture Garden is a natural and landscaped area overlooking a beautiful 1.25 acre pond. A walking trail loops around the pond with benches and a picnic area along the trail. The Sculpture Garden collection consists of donated and loaned sculptures from emerging and established artists working in all 3D media suitable for the outdoors. There are currently 19 sculptures installed around the pond. The landscaped and natural areas have a focus on NC native plants and trees. As an extension of this park, a sculpture is installed in the downtown area of Seagrove. Hours: Mon.-Fri., 8:30am-4pm. Contact: 336/873-8291 or at (www.cbsculpture-garden.com).



View of the "Hillside & Smithfield" exhibit

North Carolina Pottery Center, 233 East Avenue, Seagrove. **Through June 15** - "Hillside & Smithfield: A Tale of Two Potteries." Supported by Anna Graham, of New York and Pinebluff, N.C., Herman Cole opened Hillside Pottery in 1927, in

Smithfield, NC. Cole, the son of potter J.B. Cole, produced the pottery; Graham, a trained artist, sketched artware shapes to be duplicated. Sales were made at the shop's roadside stand and numerous northern outlets identified by Graham. Hillside Pottery became Smithfield Art Pottery in about 1930. With talented turner's like Jonah Owen, Charlie Craven, Charlie Teague, Guy Daugherty, Bill Gordy, and others, Herman Cole turned fledgling Hillside Pottery into Smithfield Art Pottery, a pottery-making behemoth with thousands of finished wares shipped out weekly. For more than a decade, in the wake of the Great Depression, superbly turned shapes, and superior glazes ensured strong sales and acclaim for the pottery's products. **Ongoing** - Featuring permanent and changing exhibits on the history of North Carolina pottery, "The North Carolina Pottery Tradition" and "Seagrove Area Pottery". The Center also offers information on activities, maps and information about the potteries located in the Seagrove area and across the state. A display of representative works from more than 90 area potteries is also offered. Hours: Tue.-Sat., 10am-4pm. Contact 336/873-8430 or at (www.ncpotterycenter.org).

Seagrove Area Pottery Center (Not the NC Pottery Center), 122 E. Main St., Seagrove. **Ongoing** - The former museum organization was founded twenty-five years ago in Seagrove, and is dedicated to preserving and perpetuating the pottery tradition. We strive to impart to new generations the history of traditional pottery and an appreciation for its simple and elegant beauty. A display of area pottery is now offered in the old Seagrove grocery building. Hours: Mon.-Sat., 9:30am-3:30pm. Contact: 336/873-7887.

STARworks Center for Creative Enterprise, 100 Russell Drive, just seven miles south of Seagrove in Star. STARworks is a project of Central Park NC, a 501-(c)(3) not for profit organization based in rural central North Carolina. The mission of CPNC is to grow a new rural economy based on the sustainable use of the natural and cultural resources of the region. **STARworks Businesses: STARworks Glass** is a public access glass studio that offers rental space for glass artists, classes and workshops for the general public, a resident artist and internship program, and high school and college glass curriculum. In addition to fundraisers like our Pumpkin Patch and Holiday Ornament Sale, STARworks Glass also holds free demonstrations on the second Thursday of each month at Hot Glass Cold Beer. **STARworks Ceramics** uses native NC wild clays to produce clay bodies that are manufactured with a filter press on site. We also sell pottery supplies and equipment. In addition to our STARworks clays, we offer both Highwater and Standard clays, and tools and equipment from Shippo, Cone Art Kilns, Mudtools, AMACO, Kemper Tools and Orton. **STARworks Clay Studio** offers a residency program for ceramic artists. Our facilities allow for large workshop spaces placed side by side, supporting a collaborative and energetic educational environment. In addition to the residency program, STARworks Clay studio offers classes and workshops for adults. STARworks is also home to **Wet Dog Glass**, the most trusted and dependable equipment maker and consultant for glass artists and craftspeople worldwide. **School House Gallery, Ongoing** - Featuring works by the STARworks artists. **Ongoing** - The gallery is filled with a selection of works from artists and artisans alike, bringing hand crafted wares into a new light. From one of a kind tableware crafted from locally mined clay paired with handwoven placemats, to simple yet elegant glass goods designed with our utilitarian ideals in mind, our functional collections are a must have for any home. Our gallery also features a selection of sculptures that gray the lines between want and need. Whether your desire is to capture an experience with one of our artists or our team, decorate your home with memories of your travels, or to treat yourself and others to a unique handmade gift, we have something for everyone to make your time here unforgettable. Gallery Hours: Mon.-Sat., 9am-5pm. **STARworks Café & Taproom** - Featuring Espresso, Iced & Frozen Coffee, Coffee, Tea, Cocoa, Smoothies, Beer & Wine, Soda, Bottled Water, Snapple, Snacks, and Pastries. And, live music some nights - visit (https://www.starworksnc.org/caf-taproom) for the schedule. Hours: Mon., 9am-3pm & Tue.-Sat., 9am-9pm. STARworks General Hours: Mon.-Sat., 9am-5pm. Contact: Claire Sellers, Starworks Communications Coordinator by e-mail at (claire@starworksnc.org).

STARworks Center for Creative Enterprise, 100 Russell Drive, just seven miles south of Seagrove in Star. **Apr. 5 & 6, 2024** - "Firefest". This 2-day festival celebrates the role of fire in the creation of art. Participate in workshops in clay, glass & metal, watch demonstrations, listen to artist talks and enjoy finale events involving fire. Live band, food trucks, beer garden on site. Daily admission is \$5. Children 12 and younger are admitted free. Contact: Claire Sell-

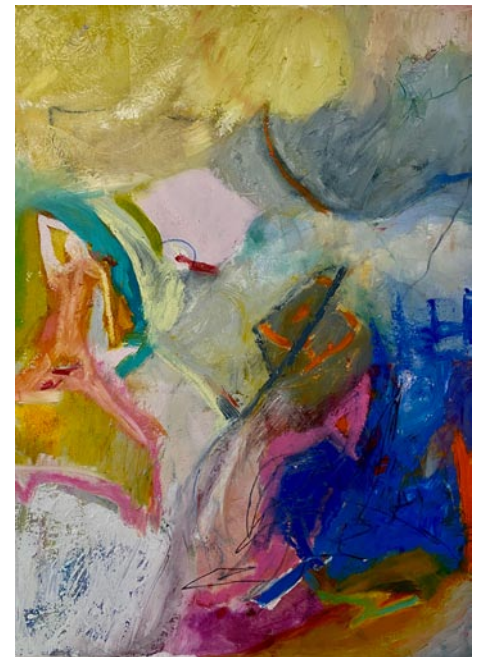
ers, Starworks Communications Coordinator by e-mail at (claire@starworksnc.org).

Siler City

North Carolina Arts Incubator Gallery, 223 N Chatham Ave., Siler City. **Ongoing** - Featuring the handcrafted work of over 30 Incubator and regional artists in a variety of mediums including painting, pottery, stained and fused glass, fabric art, cards, photography, wood, jewelry, metal, baskets and more. There is a broad range of items and prices. Hours: Mon.-Sat., 10am-5pm; & 3rd Fri., 10am-9pm. Contact: 919/663-2072 or at (www.ncartsincubator.org).

PAF Gallery, 223 N Chatham Ave., Siler City. **Ongoing** - A gallery featuring works by local and regional artists. Hours: 3rd Fri. 6-9pm. Contact: 919/663-2072 or at (www.ncartsincubator.org).

Southern Pines



Work by Caroline Young

Campbell House Galleries, Arts Council of Moore County, 482 E. Connecticut Ave., Southern Pines. **Apr. 5 - 24** - "PALUSTRIS: Nature's Palette," an exhibit that celebrates longleaf & nature through the arts. The show will feature works by Nicholas Havner (pottery), Holden Richards (photographs), Irene Russell (pottery), and Caroline Young (paintings). A reception will be held on Apr. 5, from 6-8pm. Hours: Mon.-Fri., 10am-5pm & Aug. 19, from 2-4pm. Contact: 910/692-2787 or at (www.MooreArt.org).

Southport

Franklin Square Gallery, 130 E. West St., Southport. **Ongoing** - Works by members of the Associated Artists of Southport. Hours: Mon.-Sat., 10am-5pm. Contact: 910/457-5450 or at (www.franklinsquaregallery.com).

Spruce Pine



Work by Lori Johnson

Spruce Pine Gallery, TRAC Arts Center, Toe River Arts Council, 269 Oak Avenue, Spruce Pine. **Kokol Gallery, Through Apr. 27** - "17th Annual Blacksmith Exhibition". A reception will be held on Apr. 26, from 5-7pm. Toe River Arts hosts its 17th Annual Blacksmith Exhibition featuring the work of blacksmiths from the southeast and beyond. Historically, the exhibition runs in conjunction with the Fire on the Mountain Blacksmith Festival which takes place on Apr. 27, on Lower Street in Spruce Pine. The exhibition offers blacksmiths the opportunity to show their work in a gallery setting during the festival. The exhibition will show work by this year's featured blacksmith and festival demonstrators along with work from blacksmiths in and away from our community. Cash prizes will be awarded and the public can vote for their favorite piece for the People's Choice Award. **Owen Gallery, Apr. 26 - June 1** - "Lori Johnson: A Nearly Concealed Heart." A reception will be held on Apr. 26, from 5-7pm. This body of work explores labor and its effects on relationships, self-esteem, and one's ability to grieve with a focus on the confident beauty that would have been expressed if loving care was given in place of exploitation. Born in the coal fields of West Virginia, I reference my personal history as well as documentation from The Farm Security Administration and the National Child Labor Committee to compose new mixed media

continued on Page 61