

NC Institutional Galleries

continued from Page 60

drawings to reflect on the generational ramifications of exploitative labor. **Apr. 26 - June 1** - "Spring Studio Tour Preview Exhibition". **Ongoing** - Toe River Arts will feature artist demonstrations and continue to sell artist's work in the gift shop. Hours: Tue.-Sat., 10:30am-5pm. Contact: 828/682-7215 or at (www.toeriverarts.org).

Sylva

Gallery One, Home of the Jackson County Visual Arts Association, 604 West Main Street, Sylva. **Ongoing** - The gallery is home to over 20 artists local to the area. Gallery 1 is a not for profit gallery operated as a club to provide a space for professional and emerging artists to share their artistic endeavors, display works sold to help support their vocation. Hours: Thur.-Fri., 11am-3pm and Sat., noon-4pm. Contact: Tim Lewis 828/337-3468 or James Smythe 828/507-4248.

Tryon



Work by Janet Oreslli

Tryon Arts and Crafts School, 373 Harmon Field Rd., Harmon Field, Tryon. **Through Apr. 13** - "REIMAGINED REALITIES: UP/REcycled Art," featuring TACS's annual members' exhibition & prize competition. TACS' annual member exhibition returns with a new theme celebrating the transformative power of recycling and upcycling. Breathe new life into discarded materials. From your leftover or discarded studio materials to repurposed found objects, showcase your ingenuity. **Gift Shop, Ongoing** - Gift Shop features juried works by regional artisans to selected work produced by our instructors and students. Hours: Mon.-Fri., 9am-4pm & Sat. 9am-1pm. Contact: 828/859-8323 or at (www.tryonartsandcrafts.org).



Work by Kristi Ryba

Upstairs Artspace, (Celebrating over 40 Years) 49 South Trade Street, Tryon. **Through May 24** - Three artists from South Carolina's Lowcountry will head north to Tryon, NC, for Spring shows at Upstairs Artspace. The gallery is pleased to welcome Lynne Riding, Kristi Ryba and Mary Walker to the contemporary art gallery. A reception will be held on Apr. 6, from 5-7pm. "Concerning Being" is the title of Lynne Riding's 32-piece show. Abstract in nature, the major elements in Riding's pieces speak to "issues of impermanence, shifting perspectives, and loss, aligned with the dichotomy of enduring hope, that which drives us on." "Like an Epiphany," Kristi Ryba's 17-piece show, is a timely examination of current political figures depicted in the style of paintings and images of centuries ago. Using gouache or egg tempera on vellum with gold leaf, at first glance the viewer might mistake the personages for Renaissance European royalty, religious figures, or grand images common to Medieval artwork, iconography and altarpieces. Painter and printmaker Mary Walker will be returning to her former home of Tryon, N.C. to exhibit "Scenes from Alice in Wonderland." Walker's black and white prints depict the many characters and settings from Lewis Carroll's famous children's novel "Adventures of Alice in Wonderland." Her interest in the characters was born from a "magical childhood moment" of discovery and wonder. Hours: Tue.-

Sat., noon-5pm. Contact: 828-859-2828 or at (www.upstairsartspace.org).

Valdese

Valdese Heritage Arts Center, 146 Main Street West, Valdese. **Ongoing** - The center offers a great selection of unique gifts on exhibit and for sale, including, but not limited to original paintings, pottery, needlework, wood-carvings, hand crafted furniture, ceramic sculptures, stained glass, photography, jewelry, floral arrangements greeting cards, quilts and home made soap. Hours: Mon.-Fri., 9am-5pm & Sat., 11am-3pm. Contact: 828/874-1849 or at (<http://vhac.webs.com>).

Washington

River Walk Gallery and Arts Center, 139 W. Main Street, Washington. **Ongoing** - All work is done by local artists and has to be juried into the gallery. The gallery includes watercolor, oil, and acrylic paintings, photography, pottery, mixed media, fiber arts, jewelry, wood work, stained glass, and books written by local authors. Hours: Mon.-Sat., 10:30am-5pm. Contact: 252/974-0400.

Waynesville

Little Gallery on Church Street, 37 Church Street, Waynesville. **Ongoing** - Featuring monthly exhibits by regional arts. Sponsored by the Haywood County Arts Council. Hours: Mon.-Fri., 9am-5pm. Contact: 828/452-0593 or at (www.haywoodarts.org).

The Museum of North Carolina Handicrafts, 307 Shelton Street, corner of US 276 So. and Shelton Street, Waynesville. **Ongoing** - Featuring the handicrafts of North Carolina in the historic Sheldon House. Hours: Museum hours change seasonally, call 828/452-1551.

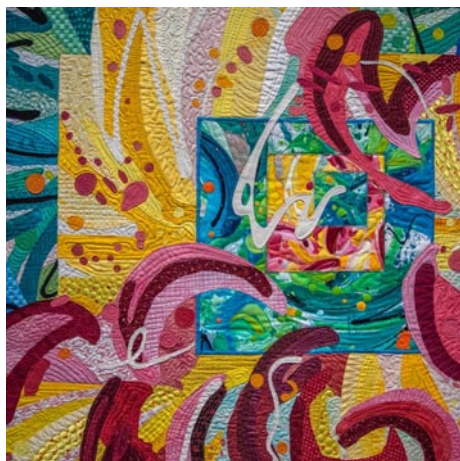
Wentworth

Dan River Art Market & Gallery, 1122 NC Hwy. 65, Wentworth. **Ongoing** - The gallery offers art and craft by local artists and 6 gallery exhibits throughout the year, workshops and lectures. Hours: Thur., 10am-4pm; Fri., 11am-2pm; and by appt. Contact: 336/349-4039.

Wilmington

Cultural Arts Building, ground floor, corner of Randall Parkway and Reynolds Drive, UNC-Wilmington, Wilmington. **CAB Art Gallery, Apr. 11 - May 10** - "Spring 2024 Senior Exhibition". A reception will be held on Apr. 11, from 5:30-7pm. Hours: Mon.-Fri., noon-4pm. Contact: call art dept. at 910/962-3440 or at (www.uncw.edu/art/gallery).

Hannah Block Historic USO/Community Arts Center, 120 South Second Street, Wilmington. **Through Apr. 7** - "42nd Annual Juried Spring Show & Sale," the official art show of the Azalea Festival. presented by the Wilmington Art Association. A reception will be held on Mar. 29, from 6-9pm. Hours: Mar. 30 - Apr. 6, 10am-5pm & Apr. 7, from 10am-4pm. Contact: call 864/884-1025 or visit (www.wilmingtongallery.org).



Katie Pasquini Masopust (American, b. 1955) "Bouquet, 2011 (detail) Cottons, Blends, Ultrasuede, Wool Batting, Machine Applique, Machine Quilted. On loan from artist.

Louise Wells Cameron Art Museum, @ intersection of Independence Blvd. & South 17th Street, Wilmington. **Through May 26** - "Charles Edward Williams: Stay in the Light," featuring works inspired by the Civil Rights Movement. The Cameron Art Museum is proud to present Stay in the Light from South Carolina artist Charles Edward Williams. This exhibition draws inspiration from historical photography of the Civil Rights movement, offering a contemporary response to social and political issues of the past and present. Charles Edward Williams' paintings and installation works incorporate a

strong use of color and gesture, inviting a focus on human emotion and our connectedness and commonality. Stay in the Light includes new work created for this exhibition, as well as work from Williams' Sun and Light series. Born in Georgetown, SC, Williams currently lives in Durham, NC. A graduate of Savannah College of Art and Design, Charles Edward Williams is a supported recipient of the Andy Warhol Visual Arts Grant. He teaches at North Carolina Central University where he is the SunTrust Endowed Faculty Chair and Associate Professor of Drawing and Painting, a position formerly held by Beverly McIver. **Through Oct. 20** - "The Work of Their Hands". The anchor work of "The Work of Their Hands" is a tulip quilt made 170 years ago by an now unknown, enslaved woman in North Carolina. Through her masterful stitchwork and time-honored design, this unknown artist sewed a story of strength and perseverance. Spinning forward from this quilt and its practice, The "Work of Their Hands" explores the continuing legacy of quilt-making and the evolution of textile art, starting with traditional quilts made for bedcoverings to contemporary fabric artworks by artists like Celeste Butler, Michael Cummings, Gee's Bend quilters, Michael James, Beverly Smith and others. **Apr. 26 - Feb. 16, 2025** - "Thomas Sayre: Four Walls". A reception will be held on Apr. 26, from 6-9pm. An artist talk will be held on Apr. 27, from 11am-noon. The exhibit features new and never exhibited works by American artist Thomas Sayre. Each of the four large-scale pieces in the installation questions the belief systems and symbols that underpin the ideals of church, nation and creation. Made of materials that include tar, smoke, fabric gowns, gunshots, welding material, earth and fire, these works invite visitors to draw close and experience the messiness of making, and by analogy, to bear witness to the ways that life invades, entangles, and tarnishes us. **Ongoing** - Cameron Art Museum presents the only sculpture park in the country created to honor the United States Colored Troops and their fight for freedom. The opening of PNC USCT Park marks the one-year anniversary of the unveiling of Boundless, the public sculpture by artist Stephen Hayes that commemorates the United States Colored Troops and the Battle of Forks Road. This park creates a gathering space for the more than 60,000 visitors from across the country who come to CAM each year and the 8,000 school children who visit the museum on field trips. PNC USCT Park will become a community space for gathering, field trips, classes, workshops, storytelling, live music and USCT living history events for years to come, in which the sculpture Boundless will be the centerpiece. **Pancoe Art Education Center, Exhibition Cases, Ongoing** - View some of the Seagrove and contemporary pottery from the museum's permanent collection in the cases. These include the works of resident artist Hiroshi Sueyoshi, Ben Owen III and Jugtown Pottery among other works. Admission: Yes. Hours: Tue.-Sun., 10am-5pm and Thur. till 9pm. Contact: 910/395-5999 or at (www.cameronart-museum.org).

MC Erny Gallery, WHQR Public Radio, 254 N. Front Street, Suite 300, Wilmington. **Through Apr. 26** - "Passages," a portrait of Cuba and "Passenger Trains in the American South" by Christina Beam and Karen Healy. Hours: Mon.-Fri., 10am-4pm, Contact: 910/343-1640 or e-mail to (whqr@whqr.org).

Wilma W. Daniels Gallery, Cape Fear Community College, 200 Hanover Street, first floor of the Hanover Parking Deck, Wilmington. **Through Apr. 26** - "2024 CFCC Student Exhibition". Hours: Mon.-Fri., noon-5pm. Contact: call 910/362-7252 or at (<http://cfcc.edu/blogs/wilmagallery/>).

WAA Gallery Citrine, 17 S 2nd Street, Wilmington. **Through June 20** - "Spring 2024 Exhibit," featuring works by over 30 WAA members. **Ongoing** - Featuring works by BJ Grimmer, PD Chisholm, Kathy Schrum Peck, Nancy Lang Miller, Brooke Eagle, Deb Williams, Meroe Wheatley, Sue Cunningham, Chris Pfund, Donna Launey, and Robin Jones. Hours: Thur.-Sat., 11am-6pm or by appt. Contact: e-mail to (gallerycitrine@gmail.com) or at (<https://gallerycitrine.com/>).

ALTERNATE ART SPACES - Wilmington **Airlie Gardens**, 300 Airlie Road, Wilmington. **Ongoing** - Located two miles west of Wrightsville Beach in Wilmington, North Carolina, Airlie Gardens encompasses 67 acres of walking paths, a freshwater lake, and formal gardens that showcase seasonal blooms, mighty live oaks, historic structures, and contemporary sculpture. Airlie is a member of the North Carolina Birding Trail, and it's diverse ecosystems provide unique habitats for a variety of colorful wildlife. Discover what makes Airlie Gardens a premiere garden of the South and a prime destination spot for garden and nature lovers from around the world. Come discover the beauty. Admission: Yes. Hours: Tue.-Sun., 9am-5pm Contact: 910/798-7700 or at

(www.airliegarden.org).



Works by Elizabeth Sheats

Burgin-Wright House & Gardens, Visitor Center, 224 Market St. Wilmington. **Through Apr. 20** - "Trails and Tides," featuring works by Elizabeth Sheats. Hours: Mon.-Sat., 10am-4pm. Contact: 910/762-0507.



"Beanstalk Colorfall," by Dorothy Gillespie, at Thalian Hall Center. Photo by Darla Amato.

Historic Thalian Hall Center for the Performing Arts, 310 Chestnut Street, Wilmington. **Apr. 19 & 21** - World Premiere of "Dorothy Gillespie: Courage, Independence, and Color". The film, presented by Art in Bloom Gallery, celebrates the legacy of renowned artist and activist Dorothy Gillespie (1920-2012). The NYC-based filmmakers, Jay Scala & Crystal White of White Ladder Productions and Gary Israel, President and CEO of the Dorothy M. Gillespie Foundation. Tickets are available for the film and the champagne reception. Contact: call the Box Office at 910/632-2285 or at (<https://www.thalianhall.org/Dorothy>).

Wilson

Barton Art Gallery, Barton College, Case Art Building, Whitehead Ave. NE, on the southeast corner of the Barton College Campus, near the intersection of Whitehead and Gold Streets, Wilson. **Through Apr. 19** - "Enzo Torcoletti, Unedited". A reception will be held on Apr. 9, from 5-7pm, with David Molesky speaking at 6pm. **Apr. 25 - May 11** - "Spring 2024 Senior Exhibition". **Ongoing** - The galleries operate on a schedule, which coincides with the Barton academic year. Generally the galleries are open from mid-August to mid-May and are occasionally open for receptions and events during the summer months. Hours: Mon.-Thur., 10am-4pm; Fri., 10am-2pm or by appt. Contact: contact Maureen O'Neill, director of exhibitions, at 252/399-6477 or e-mail to (artgalleries@barton.edu).

The American Center for Photographers, at Whirligig Station, 230 Goldsboro Street S, in downtown Wilson. **Ongoing** - The ACP will present monthly photography exhibitions showcasing work from within the USA and beyond. Coupled with the exhibition programming will be education workshops, forums and other photocentric events that will grow public awareness of photographic image makers and generate networks between photographers throughout the world. Hours: Wed., Fri., & Sat., 11am-5pm; Thur., 11am-7:30pm and Sun., 11am-3pm. Contact: 708/271-3042 or visit (www.eyesonmainstreetwilson.com).

Truist Events Gallery, Wilson Arts Center, 204 Nash Street S, Wilson. **Ongoing** - We feature a variety of work from local and regionally known artists at the Wilson Arts Center, rotating work approximately every two months. All gallery exhibits and artist receptions are free and open to the public! Visit our Gallery Shop at the Wilson Arts Center, featuring a variety of handmade and one-of-a-kind treasures from local and regional artists! There are two free parking lots behind the Wilson Arts Center: The Colony Lot (Lot #12) with entrance off Barnes Street and Lot #17 with an entrance off Douglas Street. Hours: Tue.-Sat., 10am-5pm. Contact: 252/291-4329 or at (wilsonarts.com).

continued on Page 62