

# NC Commercial Galleries

continued from Page 71



Work by Daniel Johnston

**Daniel Johnston Pottery**, 6265 Sugg Drive, Seagrove. **Ongoing** - Featuring pottery by Daniel Johnston. Hours: special events or by appt. Contact: 336/963-4845 or e-mail to (daniel@danieljohnstonpottery.com).



Works from Dean & Martin Pottery

**Dean and Martin Pottery**, 7739 Nathan Lane, Seagrove. **Ongoing** - Jeff Dean and Stephanie Martin make contemporary, vibrantly glazed stoneware vessels, sculpture, and wall pieces. Hours: Tue.-Sat., 10am-5pm & Mon. by chance. Contact: 336/879-0683 or at (www.deanandmartinpottery.com).



Works from Dirtworks Pottery

**Dirt Works Pottery**, 1226 Hwy. 705, Seagrove. **Ongoing** - Featuring contemporary, sculptural and functional pottery; Raku, stoneware, wood-fired and salt glazed by Dan Tiece. Hours: Mon.-Sat., 9:30am-5pm. Contact: 336/873-8979 or at (www.dirtworkspottery.com).

**Dixieland Pottery**, 1162 Cagle Loop Rd., Seagrove. **Ongoing** - Hand-turned functional stoneware, colorful glazes to plain earth tones. Specialize in dinnerware, face jugs, etc. Hours: Mon.-Sat., 9:30am-5pm. Contact: 336/873-8463.



Works from Donna Craven Pottery

**Donna Craven Pottery**, 2616 Old Cox Rd., Asheboro. **Ongoing** - Featuring wood-fired salt-glazed, mostly traditional with some decorative and contemporary forms by Donna Craven. Hours: by appt. only. Contact: 336/629-8173.

**Donna's Pottery Haven**, 3432 Brower Mill Road, Seagrove. **Ongoing** - Featuring work by Donna Hertzog. Hours: Mon.-Sat., 10am-5pm. Contact: 336-879-4776 or e-mail to (hertzog63@gmail.com).



Works from Dover Pottery

**Dover Pottery**, 634 NC Hwy. 705, Seagrove. **Ongoing** - Featuring a variety of colored crystalline ware, freehand-decorated majolica, and raku by Milly, Fiva, and Zeke McCannless, but we also carry ceramic work by Allen McCannless and Stephen Baxter and quilts by Scott Murkin. Hours: Tue.-Sat., 11am-5pm. Contact: 336/879-3610 or at (Doverpotteryseagrove.com).

**Down To Earth Pottery**, 11792 Hwy. 24/27, Carthage. **Ongoing** - Featuring utilitarian and decorative pieces by Jim, Nick & Mary Havner. Hours: Mon.-Sat., 10am-5pm. Contact: 910/948-2619.



Work from Eck McCannless Pottery

**Eck McCannless Pottery**, 6077 Old US Hwy. 220, Seagrove. **Ongoing** - The pottery will sell crystalline works made by this second-generation Seagrove potter but, the main focus will be on agateware, which is made by turning several different colors of clay at one time. Hours: Tue.-Sat., 10am-5pm or by appt. and open all Mon. Holidays. Contact: 336/964-4206 or at (eckmccannlesspottery.com).

**The English Potter**, 825 Hwy. 705 S., Seagrove. **Ongoing** - Featuring hand thrown porcelain and stoneware pottery by Robert Saxby. Fine stoneware glazes range from copper red to tenmoku. Hours: Mon.-Sat., 10a-5pm & Sun., noon-4pm. Contact: 336/879-1352 or at (www.english-potter.com).

**Fiber and Fire Gallery**, 253 E Main Street, Seagrove. **Ongoing** - A gallery of wearable fiber art by Kathy Fernandez. "Sewing has been a part of my life since I was a child. Successful sewing includes the ability to "see" how fabric and design complement one another." Hours: call for hours. Contact: 336/872-4007 or at (www.fiberandfire.net).

**Fireshadow Pottery**, 244 Falls Dr., Eagle Springs. **Ongoing** - Featuring one-of-a-kind "primitive elegant" ceramic art. Hours: Tue.-Sat., 10am-5pm. Contact: 910/673-8317 or at (www.fireshadow.com).



Works from Frank Neef Pottery

**Frank Neef Pottery**, 258 East Main Street, Seagrove. **Ongoing** - Featuring decorative and functional porcelain, elaborate cut out designs, with crystalline and celadon glazes. Hours: Tue.-Sat., 10am-5pm & Sun. noon-5pm. Contact: 336/872-4013 or at (www.potterybyfrankneef.com).

**Freeman Pottery**, 1147 McDuffie Rd., Eagle Springs. **Ongoing** - Featuring hand-turned miniatures 1/2 to 2 inches, functional ware decorated with farm scenes and vessel puzzles. Hours: Tue.-Sat., 9am-5pm. Contact: 910/673-2044 or e-mail at (bfoushee@triad.rr.com).



Work from Fron The Ground Up

**From The Ground Up Pottery**, 172 Crestwood Rd., Seagrove. **Ongoing** - Featuring handmade pottery by Michael Mahan and his two children, Chelsea and Levi. Tree platters, meditation bells, dinnerware, and southwestern glaze. Contemporary and traditional forms. Hours: Mon.-Sat., 9am-5pm (call ahead). Contact: 910/464-6228 or at (www.fromthegrounduppots.com).

**Graham Chriscoe Pottery**, 2719 220 N., Seagrove. **Ongoing** - Functional hand-thrown pottery using glazes of white, brown, burgundy, cobalt blue, teal blue, red and Christmas green. Hours: Mon.-Sat., 9am-5pm. Contact: 910/428-4536.



Work from Great White Oak Pottery

**Great White Oak Gallery**, 437 N. Broad St., Seagrove. **Ongoing** - Featuring functional thrown forms and hand-built pottery by Benjamin Burns and Bonnie Burns. Exquisitely glazed and hand decorated with rare unusual glazes and hand-painted motifs. Hours: daily 9am-5pm. Contact: 336/873-8066 or at (www.greatwhiteoakgallery.com).

**Hatfield Pottery**, 187 Atkinson Farm Rd., Seagrove. **Ongoing** - Featuring functional and whimsical art deco, as well as folk styles of hand turned pottery by Morgan Hatfield. Hours: Tue.-Sat., 10am-5pm. Contact: 336/879-8458.

**Hickory Hill Pottery**, 4539 Busbee Rd., Seagrove. **Ongoing** - Featuring traditional shapes of the area, stoneware that is functional and beautiful. Hours: Mon.-Sat., 9am-5pm. Contact: 910/464-3166.

**His Hands Pottery**, 7029 New Center Church Rd., Seagrove. **Ongoing** - Featuring functional, decorative, folk art, and Biblical pieces by Jeanette Lowdermilk. Hours: Tue.-Sat., 10am-5pm (closed Jan.-Mar.). Contact: 336/879-5866 or e-mail at (rlowdermilk@rtmc.net).

**Humble Mill Pottery**, 121 N Broad St., Seagrove. **Ongoing** - Featuring classical and traditional stoneware influenced by 2 years of work in Japan by Charlotte Wooten. Hours: Tue.-Sat., 10am-5pm. Contact: 336/873-7145 or at (www.humblemillpottery.com).



Work from JKL Jewelry at Jugtown

**JLK Jewelry at Jugtown**, 330 Jugtown Rd., Seagrove. **Ongoing** - Jennie Lorette Keatts takes clay to a different level! She hand makes pottery cabochons and sets them in sterling

silver or 14K and 18K gold, copper, brass and semi-precious stones. Hours: Tue.-Sat., 8:30am-5pm. Contact: 910/464-2653 or at (www.jlkjewelry.com).



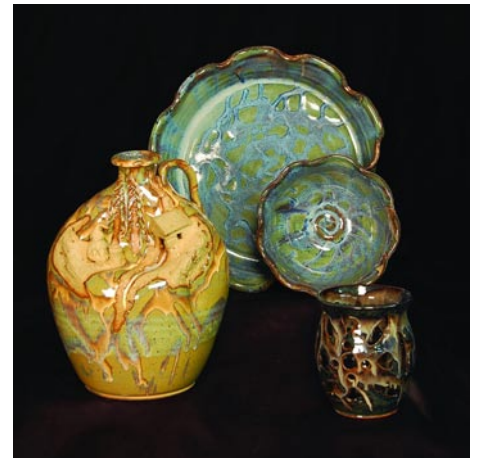
Work from Johnston & Gnetithes

**Johnston and Gentithes Art Pottery**, 741 Fork Creek Mill Road, Whynot. **Ongoing** - Featuring traditional and contemporary museum-quality pottery and sculpture by Fred Johnston and Carol Gentithes. Hours: Mon.-Sat., 10am-5pm (call first). Contact: 336/873-9176 or at (www.johnstonandgentithes.com).



Works from Jugtown Pottery

**Jugtown Pottery**, 330 Jugtown Rd., Seagrove. **Ongoing** - Celebrating 100 years of operation. Featuring handmade wood and gas-fired dinnerware, vases and jars by Vernon Owens, Pam Owens and Travis Owens. Hours: Tue.-Sat., 8:30am-5pm. Contact: 910/464-3266 or at (www.jugtownware.com).



Works from Keith Martindale Pottery

**Keith Martindale Pottery**, Boyd Dr., Seagrove. **Ongoing** - Featuring functional and decorative pottery with a new red glaze and an ocean glaze by Keith Martindale. Hours: Mon.-Sat., 10am-3pm & Sun. 1-5pm (closed Jan.-Mar.). Contact: 336/302-3571 or at (www.keithmartindalepottery.com).



Works from King's Pottery

**King's Pottery**, 4905 Reeder Rd., Seagrove. **Ongoing** - Hand-turned traditional stoneware. Wood-fired salt glaze. Folk pottery. face jugs, and more. Hours: Mon.-Sat., 9am-5pm. Contact: 336/381-3090 or at (www.kingspottery.com).

**Kovack Pottery**, 1298 Fork Creek Mill Rd., Seagrove. **Ongoing** - Featuring hand-turned, hand-painted, lead-free functional stoneware and wood-fired, salt-glazed pottery by Craig Kovack and Michelle Kovack. Hours: Mon.-Sat., 9am-5pm & Sun., noon-5pm. Contact: 336/873-8727 or at (www.geocities.com/kovackpottery/).