

NC Institutional Galleries

continued from Page 53

Town Hall Gallery, City of Cary Town Hall, 316 North Academy Street, Cary. **Through Apr. 4** - "Alexander Percy". Percy says, "We live in times of ambivalence daily, I take refuge in painting as a means of existential survival and a method of understanding. The oil paint and the palette knife become allies of my infinite artistic search and expression of ideas. Living the pandemic through painting has given me the opportunity to reconnect with feelings, emotions and uncertainties that we treasure for one reason or another. The time captured in each of the pieces reveals stages of uncertainty intrinsic to a state of mind hidden between colors. I am worthy and deserving of my sorrows, my joys, anger, sadness, unforgettable moments, every silent feeling and every lived experience that in turn allow me to explore the possibilities of color and its meaning, of the medium and its language, of expression and its domain". **Apr. 9 - June 6** - "April Carlye Clark Daugird". "My aspirations as an artist is to share Hope thru vibrant color & gutsy strokes. My style leans toward the colorful abstract but is inspired by impressionism. I work to interpret the landscapes and flora in a bold, larger-than-life way that is teeming with life affirming hope. I paint what I see around me – everyday impressions of colorful joy and daringly buoyant beauty. I find the narrative of overcoming and renewal which inspires hope is readily reflected in the mirror of nature". Hours: Mon.-Fri., 8am-5pm. Contact: 919/469-4061.

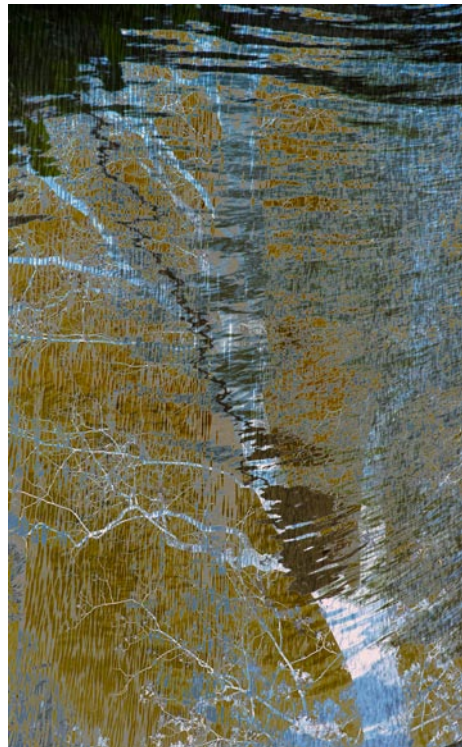
Chapel Hill - Carrboro



Dominique Muñoz, American, born 1993, Los Dolores, 2024, archival inkjet print on suede wallpaper, 22 x 22 in. Lent by the artist, L2025.7.2.

Ackland Art Museum, UNC - Chapel Hill, Columbia & Franklin Streets, Chapel Hill. **Through May 11** - "Phantom Limb: Selected Works by the MFA Class of 2025". A phantom limb is the sensation of a part of one's body still being present when it has been removed. In science and philosophy, the phenomenon has been used to understand how we link the mind and body, localize pain, and exhibit the lasting effects of trauma. In this exhibition, the artists of the graduating Master of Fine Arts in studio art class of 2025 examine the ways in which something can be missing, through erasure, force, trickery, chance, or misfortune; nevertheless, a legacy, aura, or presence can still be felt. Rebecca Pempek depicts fantastical images of the body in an effort to make sense of pain. John Felix Arnold reimagines landscapes of the American South to consider the ways they hold onto legacies of labor and violence. Dominique Muñoz's installation uses personal family archives to simultaneously conjure and erase the presence of loved and lost ones. Carson Whitmore builds on utilitarian objects that are rendered useless, lead to nowhere, and are missing parts. Together, all four artists address loss, whether personal or environmental, and how we cope with its lingering effects. "Phantom Limb: Selected Works by the MFA Class of 2025" was curated by Julianne Miao, curatorial associate at the Nasher Museum of Art at Duke University. **Through May 11** - "Triple Take: Dialogues with the Terra Collection-in-Residence". The Ackland is fortunate to have American paintings on long-term loan from the Terra Foundation for American Art. These paintings are the centerpieces of the three sections of "Triple Take: Dialogues with the Terra Collection-in-Residence". Each section of about twenty objects has different curators, who have gathered works from the Ackland that connect in often unexpected ways with the Terra Foundation loans. This three-part exhibition begins with Lyonel Feininger's Denstedt (1917), a powerful and expressionistic view of a German village. This painting serves as the starting point for an exploration of the artist's achievements across his career, curated by Peter Nisbet. Dana Cowen explores themes of looking, the mirror, and privacy through Archibald Motley's Between Acts (1935). Ammi Phillips's Girl in a Red Dress (c. 1835) and Robert Henri's Sylvester (1914) anchor a selection of representations of children chosen by Lauren Turner and Carolyn Allmend-

inger. This final part of the exhibition explores how knowing or not knowing the names and biographical details of the people depicted can affect our experience of the artworks. **Through July 13** - "Processing Systems: Bonding by Sherrill Roland". In the exhibition, monumental square grids of multi-colored numbers dominate the exhibition space like giant sudoku puzzles. To create them, artist Sherrill Roland reclaims United States Federal and State Correctional Identification Numbers and repurposes them through what he considers to be a systematized portraiture making technique. The grids on view act as logic exercises that scramble and rework the former correctional IDs of the artist and his father. The resulting wall drawings create theoretical portraits of the two subjects. The shared system employed to create the two works emphasizes the various bonds shared by these family members at the same time that the formal qualities of the drawings evoke lone figures bound by cells. **Permanent Collection Galleries, Through Dec. 31, 2025** - At any one time, there are about 250 works of art from the Ackland's distinguished permanent collection on view. The displays cover many eras and cultures, including most of the Museum's collection areas: the Ancient Mediterranean, Africa, Asia, the Americas, and Europe. Occasional galleries present small selections of prints, drawings, photographs, and other light-sensitive works. You can search our online collection database and filter by works on view. Try saving your own collection of objects using the new "favorites" function! **Museum Store Gallery** (Franklin and Columbia Street), Store hours: Mon.-Sat., 10am-5:30pm & Sun., noon-5pm. Museum Hours: Wed.-Sat., 1-5pm. Contact: 919/966-5736 or at (www.ackland.org).



Work by Barbara Tyroler

FRANK, 370 E Main St. Carrboro, Carrboro's East Main Square, next to Hickory Tavern and the Hampton by Hilton hotel, Chapel Hill. **Ongoing** - Featuring work from over 70 artists, Frank offers more than you'd expect from an art gallery. Frank is a collective, founded by the area's finest artists working together to open the door for creative innovation in the arts. Hours: Tue.-Sat., noon-5pm or by appt. Contact: Contact: 919/636-4135 or at (www.frankisart.com).

The ArtsCenter, 300-G East Main Street, Carrboro. **Ongoing** - Nurturing the arts in the triangle since 1974 through performance, education and exhibition. Hours: Mon.-Fri., 9am-9pm and Sat. 10am-5pm. Contact: 919/929-2787 or at (<http://artscenterlive.org>).

The Sonja Haynes Stone Center for Black Culture and History, UNC-Chapel Hill, 150 South Road, Chapel Hill. **Ongoing** - Dedicated in 2004, the Sonja Haynes Stone Center houses classrooms, a library, an art gallery and museum, an auditorium, and a dance studio. More than ninety-five percent of the Center's cost was met through private gifts, contributed by more than fifteen-hundred donors. Hours: Mon.-Fri., 8am-5pm. Contact: 919/962-9001, e-mai to (stonecenter@unc.edu) or visit (<http://sonjahaynesstonectr.unc.edu/>).

ALTERNATE ART SPACES - Chapel Hill **Horace Williams House**, 610 E. Rosemary Street, Chapel Hill. **Ongoing** - The Horace Williams House is the only historic house open to the public in Chapel Hill. The house retains its original architecture including woodwork, floors, ceilings, and mantles. They have a collection of antique furniture, including a set of four chairs and a newly acquired settee that once belonged

to Horace Williams. They offer self-guided tours of the house, including an exhibit about the history of those who lived there. They also have a number of self-guided walking tours of the surrounding community, which you can pick up free of charge at the Horace Williams House. Explore the historic district along East Franklin Street, wander the Old Chapel Hill Cemetery, and more. Hours: Thur. & Fri., noon-4pm and Sun., 2-5pm. Contact: 919/245-4320 or e-mail to (info@visit-chapelhill.org).

Charlotte Area

South End Art Gallery Crawl - From 5-8pm on the 1st Friday of each month.

Bechtler Museum of Modern Art, Levine Center for the Arts, 420 South Tryon St., Charlotte. **Ongoing** - The Bechtler Museum of Modern Art is named after the family of Andreas Bechtler, a Charlotte resident and native of Switzerland who assembled and inherited a collection of more than 1,400 artworks created by major figures of 20th-century modernism and donated it to the public trust. The Bechtler collection comprises artworks by seminal figures such as Alberto Giacometti, Joan Miro, Jean Tinguely, Max Ernst, Andy Warhol, Alexander Calder, Le Corbusier, Sol LeWitt, Edgar Degas, Nicolas de Stael, Barbara Hepworth and Picasso. Only a handful of the artworks in the Bechtler collection have been on public view in the United States. Admission: Yes. Hours: Mon., Wed.-Sat., 10am-5pm; Sun. noon-5pm; and open until 9pm the 1st. and 3rd. Fri. of each month. Contact: 704/353-9200 or at (www.bechtler.org).

Bill and Patty Gorelick Gallery, at Central Piedmont Community College's Central Campus, North Classroom, 1320 Sam Ryburn Walk, Charlotte. **Through June 30** - Featuring works by Tom Thoun and Amy St. Aubin. Thoun's artwork focuses on his hospital experience after a cerebellar stroke. For his self prescribed occupational therapy, he took on relearning many traditional visual art concepts, such as ancient Egyptian and Greek body proportions as well as revisiting color theory. His color study focused on harmonious recipes found on the "Pocket Color Wheel". Aubin's artwork represents an evolution of her practice over the past fifteen years, focusing on the figure as a portal between landscapes. She explores the interaction between the figure and the background, pushing the figure into the foreground or placing it within the landscape to manipulate depth. This series continues to incorporate collage and cold wax, expanding across different surfaces. In these pieces, the figure becomes either a presence or an absence, reflecting the spaces left after physical loss. Her work conveys the disbelief that what once was, is no longer—but still lingers. Hours: open while campus is open, but reservations help us alert our security team to visitors, provide directions to the galleries. Contact: 704/330-6869 or e-mail to (foundation@cpcc.edu) to schedule an appointment. For directions to Central Piedmont's campuses, visit (cpcc.edu/locations).

Bliss Gallery, established by Holy Angels, 25 N. Main Street, Belmont. **Ongoing** - Holy Angels established Bliss Gallery to offer persons who are differently able the opportunity to share creative abilities and showcase their art alongside the works of guest artists during special exhibitions. Hours: Wed.-Sat., noon-4pm. Contact: Harmony Heslop at 704/280-9475, e-mail at (blissgallery@holyangelsnc.org) or visit (www.holyangelsnc.org).

Charlotte Art League Gallery & Studios, 4237 Raleigh Street, Charlotte. **Ongoing** - CAL houses one of the area's largest collections of local professional and emerging artists, offering affordable fine art in a variety of styles and media: acrylics, oil, pastel, watercolor, mixed media, photography and sculpture, and fiber art. Tour studios of working artists. Admission: Free. Hours: Fri. & Sat., 1-7pm and Sun., 1-5pm. Contact: 704/376-2787 or at (www.charlotteartleague.org).

Cornelius Arts Center Gallery, 19725 Oak Street, Cornelius. **Ongoing** - The Arts Center Gallery is under the direction of the future Cain Center for the Arts. Hours: Mon.-Fri., 10am-4pm. Contact: 704/896-8823, 980/689-3101 or visit (<https://cainarts.org/>).

Davidson College, Belk Visual Arts Center, 315 North Main and Griffith Streets, Davidson. **Van Every & Smith Galleries, Through Apr. 9** - "Warp Weft Water Weeds," featuring works by Elizabeth Bradford. The exhibition highlights the talent of an artist who has spent fifty years diligently working within our own community, capturing the evolving landscapes she holds dear. She draws inspiration from a profound connection to nature through direct observations while hiking or kayaking primarily in the Southeastern United States where she resides. While her works are predominantly representational, they also maintain a relationship with abstraction. The

exhibition's accompanying catalogue includes essays by Dr. Emily Stamey, Curator of Academic Programming & Head of Exhibitions at Weatherspoon Art Museum; Dr. Leo Mazow, Louise B. and J. Harwood Cochrane Curator of American Art, Virginia Museum of Fine Arts; and an interview between Bradford and Tyler Green, award-winning historian and critic who has produced and hosted "The Modern Art Notes Podcasts" since 2011. Hours: Mon.-Fri., 10am-5pm and Sat. & Sun., noon-4pm. Contact: 704/894-2519 or at (www.davidsoncollegeartgalleries.org).

Harvey B. Gantt Center for African-American Arts & Culture, Levine Center for the Arts, 551 S. Tryon St., Charlotte. **Through Aug. 17** - "Cherry, Khalif Tahir Thompson," is the first institutional solo exhibition in the United States, features eight large-scale paintings that explore themes related to identity, memory, and emotion. Imbued with a sense of nostalgia yet charged with a contemporary energy that bridges the tangible and the imagined, Thompson creates layered compositions that invite viewers into intimate spaces, drawing from the artist's personal experiences, family archives, and broader cultural narratives. "Cherry" invites viewers to explore how identity is remembered, shared, and reimagined, celebrating the complex layers of human experience. **Through May 11** - "YoYo Lander: Between the Quiet, Selected Works from 2019-2024". Known for her portraits of solitary African diasporic subjects, contemporary artist YoYo Lander captures visual form via a psychological and empathetic drive to understand her subjects, not only through the features of their physical bodies but also through moments in which introspection prompts them to most fully reveal themselves. As a self-taught painter and collagist, Lander highlights the multifacetedness of Black identity while also exploring the expressive aspects of the human figure through which gesture, line, posture, and color convey meaning. **Through Apr. 13** - "American Gurl," co-curated by Zehra Zehra and Kilo Kish. The exhibition is an ongoing curatorial project featuring work that explores all shades of American dreaming. This project's installment takes shape as a film exhibition that presents eight films by intergenerational artists with curiosity around the perspectives and nuances within the Black feminine experience and our relationships with beauty, success, freedom, and power in America. "American Gurl" is presented in collaboration with Womxn in Windows, a platform whose mission is to share the perspectives of women of color through video, art, film, and performance. **Ongoing** - Featuring selections from the John & Vivian Hewitt Collection of African-American Art, one of the nation's most important and comprehensive collections of African-American art. Hours: Thur. - Sat., noon-6pm & Sun., noon-6pm. Contact: 704/547-3700 or at (www.ganttcenter.org).

Lake Norman Art League Gallery, 442 S. Main St., located across the street from Wooden Stone, next to Masterworks; enter at the rear of the building, and turn right into the lobby, Davidson. **Ongoing** - Featuring works by Lake Norman Art League members. Hours: Mon.-Fri., 8am-7pm. Contact: 704/620-4450 or at (www.LKNart.org).

Latin American Contemporary Art Projects (LaCa), 1429 Bryant Street, in the heart of the revitalized FreeMoreWest neighborhood, Charlotte. **Ongoing** - LaCa Projects is a platform dedicated to the presentation, development, and promotion of Latin American art and culture within the United States. The gallery encourages cross-cultural dialogue by representing a small group of influential and thought-provoking contemporary, emerging and mid-career artists, as well as exhibiting a broader range of work by established and Master Latin American artists. The gallery, which has expertise in a number of different art media with a significant focus on paintings, will also be part of a larger planned expansion that includes open artist studios and a dining concept. Hours: Mon.-Fri., 1-5pm or by appt. Contact: Neely Verano at (neely@lacaprojects.com) or call 704/609-8487.

Levine Museum of the New South, 401 South Tryon Street, (former Wells Fargo Museum) Charlotte. **Ongoing** - "Charlotte: Moving Forward, Looking Back". To move forward and make the city a better place for everyone, we must look back and learn from choices made in the past. The exhibit tells the story of Charlotte from Native and early European settlement to today. The exhibition combines stories of people, places, and events in a foundational narrative of Charlotte history that answers thought-provoking questions about how we got here and where we are headed. Experience Charlotte stories through objects from the Levine Museum's collections, interactive media displays, and art by local creatives. **Ongoing** - Building a stronger, more equitable community by connecting people to Charlotte and to each other through history, culture, and

continued on Page 55