

# EARTH INTO ART

**CLAY SALE**  
**SATURDAY, MAY 8, 2021**  
**9 - 5**  
**OVER 15 POTTERS**



## GREENWOOD AREA STUDIO POTTERS AT THE ARTS CENTER OF GREENWOOD

**JOIN US FOR A HANDS-ON  
 COMMUNITY CLAY PROJECT  
 12-3 PM**  
**COME HELP US MAKE TILES FOR A  
 MURAL TO BE INSTALLED AT THE  
 GREENWOOD SOUP KITCHEN**

**120 Main Street, Greenwood, SC**



Sponsored in part by a grant from SC Arts Commission



find us on facebook and instagram @earth.into.art

## Greenville Technical College

continued from Page 13

and acknowledge their skills to enable the abilities of these students.” Restaino has singled out 23 works for cash awards.

*Windows* by Lanah Kelly from Hillcrest High School is the 31st AUHSAE Best in Show. Restaino, found herself immediately drawn to *Windows*. “The work captured my attention for the extremely sensitive use of charcoal and graphite. The longer than usual portrait format, the angled position of the face, and the implied diagonal line of the eyes activate the gaze that engages the viewer. The portrait captures the immediacy of the woman’s feelings. You sense her joy, contentment, or perhaps relief in this moment.”

The recording of the Awards Presentation Zoom that includes images of all award winners is available at ([www.gvltec.edu/dva](http://www.gvltec.edu/dva)). Click on Benson Galleries and find the link there. Images of the award winners can be found on the DVA Facebook page and Instagram. All participating students and their instructors will receive a printed exhibition catalog that pictures all award winners and lists all exhibiting students.

Thank you to the Metropolitan Arts Council, Netalytics, APCO Plastics, Reel Video and Stills, and the Greenville Tech Foundation for generously making the AUHSAE awards possible.

Gallery hours are: Mon.-Thur., 8am-7pm, and Fri., 9am-5pm. Galleries are open to the public. Masks are required.

For further information check our SC Institutional Gallery listings, call Pat Owens, Gallery Assistant at 864/250-3051, e-mail



Work by Lanah Kelly, Best of Show winner

Fleming Markel, Gallery Director at ([fleming.markel@gvltec.edu](mailto:fleming.markel@gvltec.edu)) or visit ([www.gvltec.edu/dva](http://www.gvltec.edu/dva)).

## Art & Light Gallery in Greenville, SC, Features Works by Eli Warren & Eric Benjamin

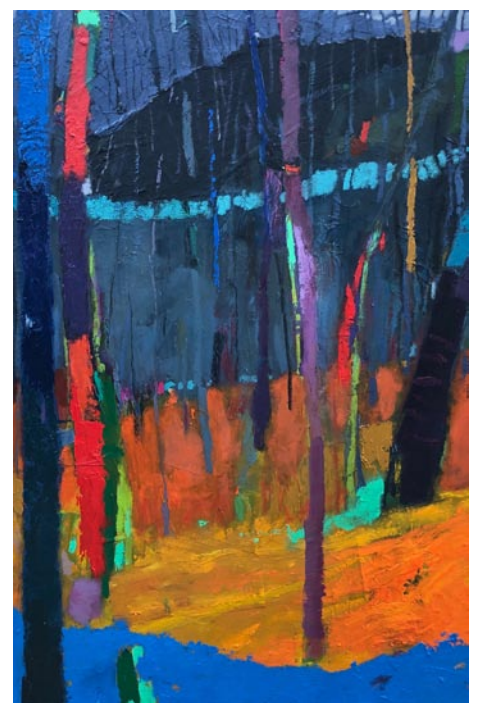
Art & Light Gallery in Greenville, SC, will present *Of Nature and Man*, featuring works by Eli Warren and Eric Benjamin, on view from May 4 - 29, 2021. A reception will be held on May 7, from 6-8pm.

Local artists, Eric Benjamin and Eli Warren, collaborate using photography and oil paint to create a collection exhibiting the beauty and wildness that connect nature and man.



Work by Eli Warren

The two artists find themselves fascinated by the uniqueness and diversity in both trees and people. Benjamin intentionally places his tree forms in relationships in which humans find themselves- embracing, dancing, or crowding together on a busy street corner. In this past year of social distancing and quarantine, the longing for interaction and connection have become more prevalent than ever before leading Benjamin to explore this desire for



Work by Eric Benjamin relationships.

Warren’s collection of photographs explore the inherent relationship between man and nature. By juxtaposing the human figure with elements of nature, the contrast of surfaces as well as similarity of organic forms develop amidst this series of black and white images. These images remind the viewer that no matter how far we progress, humans are part and parcel of nature, rather than a separate entity living alongside it.

For further information check our SC Commercial Gallery listings, call the gallery at 864/252-5858 or e-mail to ([art@artandlightgallery.com](mailto:art@artandlightgallery.com)).

So you’re the Marketing Director of a visual arts organization, art museum, arts center, arts council or artist guild and you’re wondering why you never see the exhibits presented at your facility included here. Maybe you’re the owner of a commercial art gallery and you’ve never seen your exhibits included with others presented in your area. You might even be an individual artist who is having an exhibit in a non-profit space or commercial space and you don’t see your exhibits included.

My question to you is - How long will you put up with that before you ask someone,

“Why that is the case?”

If you’re not included - it’s your fault.

You can contact us by calling 843/693-1306 or by e-mail at - [info@carolinaarts.com](mailto:info@carolinaarts.com) but do it before the 24th of the month prior to our next issue.