

# American Folk Art

continued from Page 28

2025 *Face Jug Show*, including: Wayne Hewell, Mike Ball, Ben J. North, Michael Gates, Tim Whitten, Carl Block, Stacy Lambert, Walter Fleming, Steve Abbee, Joel Huntley, Stephen Harrison, and Vicki Miller.

This year we also welcome a few new potters to our ranks: Feliciano Abaurre of Dallas, GA and Brad Ledbetter of Charleston, SC. It’s incredibly fun to add new face jug makers to the mix, who bring new perspectives and fresh sources of inspiration to a practice rooted in tradition.

“Our *Annual Face Jug Show* has initi-

ated countless folks to an important part of our craft heritage. Each year, we endeavor to bring together the most skilled potters and a wide range of styles to pay homage to this unique living history” says gallery owner Julia L. Mills.

Whether you can visit the gallery in person or only online, please join us as we celebrate this storied pottery tradition at American Folk Art!

For further information check our NC Commercial Gallery listings, call the gallery at 828/281-2134 or visit ([www.amerifolk.com](http://www.amerifolk.com)).

## Pink Dog Creative in Asheville, NC, Features Works by Heather Divoky and Emelie Weber Wade

Pink Dog Creative in Asheville, NC, will present *Tea in the Tempest*, an exhibition which explores Hurricane Helene’s aftermath through collaborative art, on view at the Pink Dog Creative Gallery, from May 9 through June 8, 2025. A reception will be held on May 9, from 5-8pm

This is a powerful collaborative exhibition by mixed media artist Heather Divoky and textile artist Emelie Weber Wade..

In the wake of Hurricane Helene’s devastating impact on Western North Carolina, Divoky and Wade have come together to process their shared experiences through art. This exhibition builds on the pre-storm exhibit concept, “Tea Time for Two,” which celebrates friendship and collaboration between studio mates. *Tea in the Tempest* emerges as the post-storm continuation, reflecting on destruction and loss, while also celebrating the resilience and rebuilding that followed.

“We wanted to stay true to the show we had originally envisioned, but also process the powerful emotions the hurricane stirred in us,” says Divoky. “The collaborative pieces especially speak to how Emelie and I use our art to channel those raw, transformative feelings. Together, we’ve woven a narrative of resilience and renewal that we can’t wait to share with you.”

Divoky’s contributions include twelve new signature paper head crowns, each meticulously crafted with marker, ink, and wire. Alongside these, she presents several new hand-drawn works that explore the intricate emotions of the storm’s aftermath, as well as an elaborate mobile installation that brings movement and life to the exhibit. These pieces capture the delicate balance between fragility and resilience, inviting viewers to experience the emotional journey of recovery through art.

Wade’s work in *Tea in the Tempest* delves into the emotional aftermath of Hurricane Helene, using handwoven pattern inlay wall art and non-traditional quilts to explore dreams, memories, and the shifting concept of home after tragedy. Inspired by vivid dreams following the storm, Wade’s woven inlay pieces combine figurative imagery with traditional Appalachian weaving patterns to represent the complex layers of grief, healing, and renewal. The quilted works, often incorporating personal symbols of home and resilience, reflect the delicate process of rebuilding, both personally and within a community. Through this combination of weaving and quilting as mediums, Wade’s art invites reflection on how the passage of time reshapes our understanding of loss and the place we call home.

The centerpiece of the exhibition features three collaborative installations that speak to different aspects of the hurricane experience: a woven paper/fiber blanket, a life-sized tree representing the moment of change, and an interactive house installation that embodies the spirit of rebuilding and community resilience in the aftermath.

*Tea in the Tempest* invites visitors to witness how creative expression can transform trauma into shared healing. The title references finding moments of calm and contemplation amidst overwhelming circumstances.

Pink Dog Creative is a vibrant arts center located in Asheville’s historic River Arts District, providing studio and exhibition space for artists while fostering creative community engagement.

For further information check our NC Commercial Gallery listings, call the gallery at 828/776-3034 or visit ([www.pinkdog-creative.com](http://www.pinkdog-creative.com)).

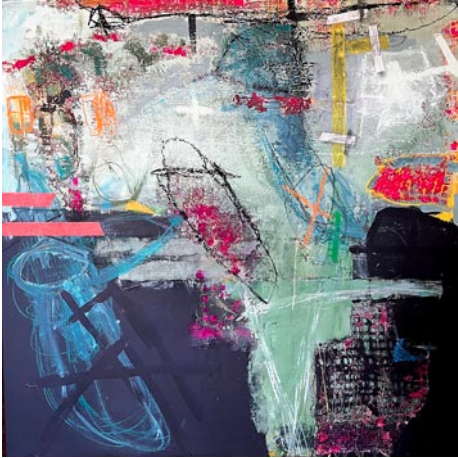
## Mark Bettis Gallery in Asheville, NC, Offers a Group Exhibition of Works by Local and National Artists

The Mark Bettis Gallery in the River Arts District of Asheville, NC, will present *Pushing the Boundaries*, the newest group show hosted by Mark Bettis Gallery, featuring 10 local and national artists who will be using a multitude of mediums to explore a heavily textured body of work.

The exhibition will be shown at the Mark Bettis Gallery’s River Arts District location from May 10 through May 24, 2025. There will be a reception at the gallery on May 10, from 5:30-7:30pm. Refreshments will be served. The artists will be present to meet and talk with guests about their creations. All the works on display will be offered for sale.

If you are looking for something that ‘literally’ stands out from the crowd, this show is for you!

Our artists are creating a showcase of artworks that explores the use of texture, mesmerizing you with surfaces that make



Work by Sam Edmiston

you want to reach out and touch. They will be creating a new experience taking you beyond the two-dimensional!

Texture- As Defined in Art is - “The per-

ceived surface quality of a work of art... it can be felt through touch or seen visually.”

The gallery is located in the River Arts District on Roberts Street, Asheville, NC, 28801. The gallery features unique and distinctive works of art in a variety of mediums including contemporary paintings, glass, sculpture, and mixed media.

For further information check our NC Commercial Gallery listings, call the gallery at 941/587-9502 or visit ([markbettisgallery.com](http://markbettisgallery.com)).



Work by Mark Bettis

## Gallery Mélange in Asheville, NC, Features Works by Joël Urruty

Gallery Mélange in Asheville, NC, will present *Connection*, a solo exhibition by Joël Urruty, on view from May 30 - June 14, 2025. A reception will be held on May 30, from 5-7pm.

Gallery Mélange is honored to present *Connection*, a solo exhibition by celebrated sculptor Joël Urruty. Through a striking collection of figurative and abstract sculptures, Urruty explores the profound theme of human connection - the ways we come together, drift apart, and remain invisibly linked. This exhibition invites viewers to contemplate the complexities of relationships and the unseen forces that bind us to one another.

Born in San Francisco, CA, in 1968, Urruty is the son of Basque immigrants from the South of France. His artistic journey began with a Bachelor of Science in Design from San Francisco State University, followed by an apprenticeship with Master Craftsman David Marks. He later earned his Master of Fine Arts from the Rochester Institute of Technology’s School for American Craft.

Urruty’s sculptures have been exhibited and collected internationally, with works held in the permanent collections of the Asheville Art Museum, the Museum of



Works by Joel Urruty

Fine Arts in Boston, and the Honolulu Museum of Art. He currently resides in Hickory, NC, where he balances his artistic practice with family life.

Gallery Mélange is located on Biltmore Avenue in Asheville.

For more info check our NC Commercial Gallery listings, call 828/782-1110 or visit ([gallerymelange.com](http://gallerymelange.com)).

# Carolina Arts

[www.carolinaarts.com](http://www.carolinaarts.com)

You can find [past issues](#) all the way back to August 2004!

You can find [past articles](#) all the way back to June 1999!

History is the gateway to the future.

Send us your email address to be added to our list to receive notice of each monthly issue.

[info@carolinaarts.com](mailto:info@carolinaarts.com)