

# SC Institutional Galleries

continued from Page 42

tory, as well as from the artists' own family history. Created and curated by award-winning and nationally exhibiting textile artist, Torreah "Cookie" Washington, this unique exhibition offers African American fiber artists an opportunity to showcase their original and innovative designs executed in a variety of traditional and non-traditional fiber techniques. Hours: 8am-7pm daily. Contact: 843/740-5854, at (<https://culturalarts.northcharleston.org/>) or ([NorthCharlestonArtsFest.com](http://NorthCharlestonArtsFest.com)).

**North Charleston Riverfront Park**, 1001 Everglades Dr., The Navy Yard at Noisette (former Charleston Naval Base), North Charleston. **Through Mar. 15, 2026** - "19th annual National Outdoor Sculpture Competition & Exhibition 2025/2026." View 12 thought-provoking outdoor sculptures by established and emerging artists from 5 different states in this annual juried competition and exhibition. Selections and awards made by the juror, Greg Shelnutt, artist and professor of art and head of the sculpture area in the Department of Art & Design at the University of Delaware in Newark, DE. Hours: daylight hours. Contact: call 843/740-5854, visit ([NorthCharlestonArtsFest.com](http://NorthCharlestonArtsFest.com)) or at (<https://culturalarts.northcharleston.org/>).

## Orangeburg

**Cecil Williams Civil Rights Museum**, 1865 Lake Drive, Orangeburg. **Ongoing** - Established in 2019, the exquisite ultra-modern facility displays 1000 images of the Civil Rights Movement, but from the perspective of The Epochal South Carolina Events That Changed America. The massive archives comprise the largest collection of images of this type among all museums in the United States; including the Atlanta based High Museum which archives 300 images. The images were created by the founder, Cecil Williams, who began photography at age 9 and covered almost all historically significant events in South Carolina; from 1950 Briggs v. Elliot in Summerton, thru the 1969 Charleston Hospital Workers' Strike...and Beyond. From 1955 through 1969, Williams was a freelance journalist for "JET" magazine. His images have appeared in thousands of magazines, newspapers, historical publications, and motion picture productions. The museum design itself is part of the founders' DNA because; upon graduating from high school, Williams wanted to attend Clemson University to study architecture but denied because of his race. He then purchased a drafting board and through the years, designed three residences; including one featured in "EBONY", and the museum's design which has evolved into a living history facility. Hours: call ahead for hours. Contact: call 803-531-1662 or at ([www.cecilwilliams.com](http://www.cecilwilliams.com)).

**Lusty Gallery**, Orangeburg County Fine Arts Center, Edisto Memorial Gardens, 649 Riverside Drive, Orangeburg. **Through May 31** - Featuring the work of Jo Wyrosdick, Jim Carr, and Heather Rast. **Ongoing** - Featuring works by local artists. Hours: Mon.-Thur., 8:30am-4:30pm & Fri., 8:30am-noon. Contact: Vivian Glover at 803-606-7770 or at (<https://orangeburgarts.org/>).

## Pawleys Island, Litchfield & Murrells Inlet

**Brookgreen Gardens**, 1931 Brookgreen Garden Drive, US 17, south of Murrells Inlet. **The Stanley and Naomi Bleifeld Gallery, Ongoing** - All the works on view in the Bleifeld Gallery are from the collection of Brookgreen Gardens. The gallery showcases the work of historic and contemporary sculptures whose subjects are taken from the natural world. It includes work by Anna Hyatt Huntington, Gertrude Lathrop, Stanley Bleifeld, Grainger McKoy, Sandy Scott, Kent Ullberg, and numerous other prominent sculptors, past and present. The gallery officially opened in Feb. 2017. **Ongoing** - "Lowcountry: Change and Continuity," a major new exhibit, tells the story of human interaction with this land over the centuries. It features wall size photomurals by SC naturalist photographer Tom Blagden, along with a range of artifacts tracing the history of man's occupation of this extraordinary landscape. **General Gardens, Ongoing** - One of the largest collections of outdoor sculpture in America. This preeminent collection of American representational sculpture includes - 560 works by 240 artists - representing such well-known artists as Charles Parks, Daniel Chester French, Carl Milles, August Saint-Gaudens and Anna Hyatt Huntington. Hours: daily, 9:30am-5pm. Admission: Yes. Admission to Brookgreen is good for seven days. Contact: 843/235-6000 , 800-849-1931, or at ([www.brookgreen.org](http://www.brookgreen.org)).

ALTERNATE ART SPACES - Murrells Inlet **Pawleys Island Old Town Hall**, 321 Myrtle Avenue, (on the Island corner of the North

Causeway and Myrtle Avenue) Pawleys Island. **Weekends in May, May 2-4, and May 9-11, from Fri.-Sat., 9am-4pm & Sun., noon-4pm** - "Waccamaw Neck Arts Alliance Annual Spring Show". The show will feature our local award winning painters, potters and authors. Contact: 843/237-1698, e-mail to ([Waccamawneckartsalliance@gmail.com](mailto:Waccamawneckartsalliance@gmail.com)) or visit ([www.scwnaa.org](http://www.scwnaa.org)).

## Richburg

**Olde English District Visitors Center & Market**, 3200 Commerce Drive, Suite A, Richburg. **Ongoing** - This is your one stop shop for finding specialty food products, art (pottery, jewelry, etc.) and many other local, unique items from our region. We also carry a variety of South Carolina souvenirs. Hours: daily, 9am-5pm. Contact: 803/385-6800 or at ([www.oldeenglishmarket.com](http://www.oldeenglishmarket.com)).

## Ridgeland

**Morris Center for Lowcountry Heritage**, 10782 Jacob Smart Blvd. S., on US 17, in a 1937 historic Sinclair Service Station, Ridgeland. **Through Jan. 3, 2026** - "LINKED," featuring works by Colin Quashie, is art that sparks dialogue. The exhibition explores contemporary racial stereotypes through a blend of historical relics and pop culture icons. Colin Quashie's images critique contemporary racial stereotypes. He combines historical relics and pop culture icons to expose how modern visual culture portrays people of color. **Ongoing** - Morris Center for Lowcountry Heritage hosts exhibitions on local history, art, and culture. We also provide hands-on art workshops throughout the year. Admission: FREE. Hours: Tue.-Sat., from 10am-5pm. Contact: 843/284-9227 or at ([www.MorrisHeritageCenter.org](http://www.MorrisHeritageCenter.org)).

## Ridge Spring

**Art Association of Ridge Spring Gallery**, Art Center in Ridge Spring, located behind the Ridge Spring Civic Center, 108 Maintenance Shop Circle, Ridge Spring. **Ongoing** - The Center contains works in a variety of media by: Ron Buttler, D.S. Owens, Carolyn Boatwright, Betsy Connelly, Kedryn Evans, Jessica Goodman, Melanie Knight, John Zurllo, Donna Minor, Joanne Crouch, Gloria Gizzle, Linda Lake, Gwen Power, Deborah Reeves, , Marion Webb, and Barbara Yon. It is also home of the Ridge Quilt Trail. Hours: Fri. & Sat., 10am-2pm or by appt. Contact: 803/685-5577 or e-mail to ([artassnridgespring@gmail.com](mailto:artassnridgespring@gmail.com)).

## Rock Hill

**Center for the Arts**, 121 East Main St., Rock Hill. **Dalton Gallery, Through May 2** - "Delirium: Botanicals in Oil and Glass," featuring works by Brenda Pokorny & Christine Knize. **Edmund D. Lewandowski Classroom Gallery, Through May 2** - "Works by students at Westminster Catawba Christian School". Hours: Mon.-Thur., 9am-6pm; Fri., 9am-5pm; and on 2nd and 4th weekends, Sat., 10am-2pm; & Sun., 2-4pm. Contact: 803/ 328-2787 or at (<http://www.york-countyarts.org/>).

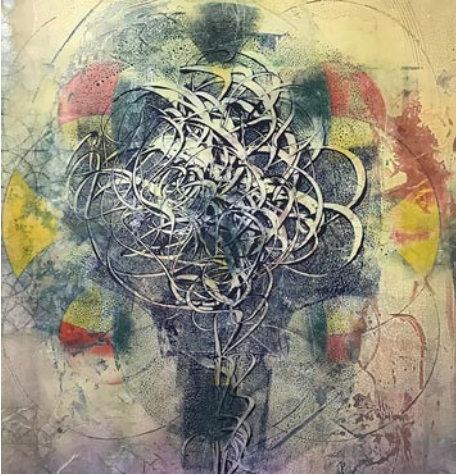
**The Rock Hill Pottery Center**, Getty's Art Center, 201 East Main Street, in Old Town Rock Hill. **Ongoing** - Featuring works by Bob Hasselle, Christine White, Katherine Petke, Hope Fregerio, and Brian Schauer. Hours: Mon.-Fri., 10am-4pm and Sat., 10am-2pm. Contact: call 803/370-8109 or find then on Facebook.

## Spartanburg

**Throughout downtown Spartanburg, 3rd Thursday, from 5-8pm** - "Spartanburg ArtWalk," a free self-guided tour through participating galleries across Spartanburg's Cultural District. Contact: visit ([www.chapmancultural-center.org](http://www.chapmancultural-center.org)).

**Throughout downtown Spartanburg's Cultural District, Ongoing** - The Creative Crosswalk Project is a public art initiative in which local artists and designers design and paint a series of crosswalk murals, transforming the crosswalks into works of art, on Main Street in Spartanburg, SC. The downtown cultural district area is often bustling with events and pedestrians, and the pedestrians rely heavily on a multitude of crosswalks to safely traverse the downtown Spartanburg area. The problem is that crosswalks are incredibly easy to overlook, they are rarely visually appealing, and they can even be quite dangerous. In an effort to remedy these issues, Chapman Cultural Center, the City of Spartanburg, and the Spartanburg Area Chamber of Commerce came together to organize the Creative Crosswalk Project. For more

info visit (<https://www.chapmanculturalcenter.org/pages/blog/detail/article/c0/a1555/>).



Work by Tom Dimond

**Artists Collective I Spartanburg**, 578 West Main St., Spartanburg. **Gallery II, May 6 - 31** - "No Rhyme or Reason," featuring works by Pat Cato. An artist's reception will be held on May 15, from 5 to 8pm, as part of Spartanburg ArtWalk. Art is meant to be "fun and explorative," says Greenville artist Pat Cato, whose mixed media works on canvas will be shown in this exhibition. **Gallery III, May 6 - 31** - "Pottery with a Twist," featuring works by Jim Weber. A reception will be held on May 15, from 5-8pm. Thursday, as part of Spartanburg ArtWalk. Weber will give an artist's talk and a potter's wheel demonstration from 6-7pm. Spartanburg artist Jim Weber's traditional and functional pottery has remained his mainstay throughout his 53 years as a potter, but today, his repertoire includes unique lidded teapots and jars. Most of the pottery Weber has made through the years has been "of a functional, even traditional range of forms," he says. "They were the first types of pottery I ever saw as a young child and eventually became the sort of pieces I wanted to make when I got the chance." **Solomon Gallery, May 6 - June 28** - "Then/Now: A Survey of Work 1975-2025," featuring works by Tom Dimond. A reception will be held on May 15, from 5-8pm, as part of Spartanburg ArtWalk. Dimond will present a talk on his work at 6pm. Upstate artist Tom Dimond looks back at his 50-plus-year art career in his upcoming exhibition. The exhibition will include acrylic paintings on canvas, watercolor paper and panel, silkscreen prints, and mixed media collages. The pieces in the show will be offered for purchase with prices ranging from \$150 to \$3,600. **Ongoing** - The Collective features a twenty thousand square foot facility offering affordable studio space, retail space, three galleries, a full ceramics studio, printery, and works by 50 local artists. Hours: Tue.-Sat., 10am-4pm; with extended hours on the 3rd Thur. of each month until 9pm for Spartanburg's Art Walk. Contact: 864/804-6501 or at ([artistscollectivespartanburg.org/](http://artistscollectivespartanburg.org/)).

**Curtis R. Harley Art Gallery**, Performing Arts Center, USC-Upstate, 800 University Way, Spartanburg. **Ongoing** - Directed and curated by Leah Cabinum. Featuring selections from the permanent collection by artists Andy Warhol, Jerry Uelsmann and Beatrice Riese. Hours: Mon.-Fri., 9am-5pm. Contact: e-mail Leah Cabinum at ([lcabinum@uscupstate.edu](mailto:lcabinum@uscupstate.edu)).

**Justine V.R. "Nita" Milliken Wing**, Milliken Fine Arts Building, Converse College, Spartanburg. **Ongoing** - Featuring a collection of 52 prints, given by Spartanburg resident Frank Toms which includes works by Joan Miro, Salvador Dali, Alexander Calder, Helmut Newton and others. Hours: Mon.-Fri., 9am-5pm. Contact: 864/596-9181 or e-mail at ([artdesign@converse.edu](mailto:artdesign@converse.edu)).

**Mayfair Art Studios**, a division of Chapman Cultural Center, 1885 Hayne Street, within the Arcadia Mill Village, Spartanburg. **1st Fri. of the month** - "First Fridays" – Open Studios for its resident creatives to showcase their work. At First Fridays, resident creatives open their studio doors so the public can gain perspective on their creative process. You'll be able to view the latest work from the creatives while getting to know each of them and what drives their creativity. Explore what's Made at Mayfair! PLUS - August's First Friday will feature an Art Market with additional creatives so you can shop from local arts and craftspeople! Featured Artisans: Sarah Smith: The River Goat; Rosetta Nesbitt: Art by Rosetta Nesbitt; Dierdre Holland: T's Creations; Jan Pruitt: Granny Jan's Homemade Fudge; and Keith Hansen: Mission Pens. Beer and wine are available for those 21+. **Ongoing** - Works by Carl Tait and Harold Krisel are on display. Tait was a successful painter, textile designer, and interior designer. His ties to the Spartanburg community originate from his longtime employment at Milliken and Company. Tait was born in Old Town, Maine in 1917 and graduated from the New Hampshire Institute of Arts and Science. In the late 1940s, he moved to New York City where he designed an exclusive line of ladies' handkerchiefs for the department store B. Altman, now considered vintage,

collectible items. He also became associated with the American Artist Group designing Christmas cards, an occupation which he kept up throughout the majority of his artistic career. Krisel was a distinguished artist, architect, and teacher as well as a loving father and husband. Though Krisel may not be a household name among Spartanburg residents, he has made a significant artistic contribution to the Spartanburg community. Born in Brooklyn, NY in 1920, Krisel's interest in art and design started at a young age. He attended the American Artist School in New York city as a teenager where he met renowned modern artists, including Piet Mondrian, who greatly influenced his abstract style. After studying architecture at the New Bauhaus in Chicago from 1946-1949, he received his graduate degree from Illinois Institute of Technology in 1952. The following year, he began working for architectural firm Skidmore, Owings and Merrill when Roger Milliken hired them to design Milliken's new research facility in Spartanburg. Upon realizing Krisel was also a sculptor, Milliken hired him to design the spray fountain outside of the facility which functions as a recycler of air conditioning water. He then went on to design the Trident Fountain located outside of the Papadopoulos building on Wofford College's campus. Hours: Mon.-Fri., 10am-7pm & Sat, 9am-3pm. Contact: 864-278-3228 or at (<https://www.mayfairartstudios.org/>).



Work by Bailie Bailie

**Spartanburg Art Museum**, Chapman Cultural Arts Center, 200 East St. John Street, Spartanburg. **Main Gallery, Through June 28** - "Transcendence: The Art of David Linn, Bailie Balie and from SAM's Permanent Collection". Admission: Yes. Hours: Tue.-Fri., 10am-5pm. Closed on national holidays. Contact: 864/582-7616 or at ([www.spartanburgartmuseum.org](http://www.spartanburgartmuseum.org)).



Work by Mark Flowers

**USC Upstate Art Gallery**, Chapman Cultural Center, 200 E. St. John Street, Spartanburg. May 15 - Aug. 16 - "Faces, Places & Layered Dreams," featuring works by Aaron Tucker, Mark Flowers and Jeremy Phillips. Directed by Leah Cabinum , the gallery features the work of diverse artists from the Southeast and beyond. Hours: Tue.-Fri., 10am5pm, Thur. 10am-7pm & Sat., 11am-5pm. Contact: e-mail Leah Cabinum at ([lcabinum@uscupstate.edu](mailto:lcabinum@uscupstate.edu)).

ALTERNATE ART SPACES - Spartanburg **Campus of University of South Carolina Upstate**, 800 University Way, Spartanburg. **Ongoing** - "USC Upstate Outdoor Sculpture Collection". Available to viewers year-round, these 13 works can be seen in front of the Campus Life Center, the Humanities and Performing Arts Center, the Horace C. Smith Science Building, Tukey Theatre and the Kathryn Hicks Visual Arts Center. While the majority of the outdoor sculptures belong to internationally acclaimed artist Bob Doster, other artists included are Jim Gallucci, Daingerfild Ashton, Winston Wingo, Dan Millspaugh, Adam Walls, and Hanna Jubran. Contact: e-mail Leah Cabinum at ([lcabinum@uscupstate.edu](mailto:lcabinum@uscupstate.edu)).

continued on Page 44