

SC Institutional Galleries

continued from Page 38

or the waking world. Each piece was selected for its exceptional craftsmanship and imaginative interpretation of the theme. Don't miss this otherworldly showcase of dreamy landscapes and surreal visions. **Ongoing** - Featuring works by Greenville area artists. Hours: Mon.-Fri., 9am-5pm. Contact: 864/467-3132, or at (www.greenvillearts.com).

Museum & Gallery, Bob Jones University, Wade Hampton Boulevard, Greenville. **Ongoing** - "Likely and Unlikely Pairings," featuring a fascinating juxtaposition of art and mundane objects revealing a variety of viewpoints. Through this special comparative display, the unique presentation serves as an engaging tool for all viewers interested in understanding the many facets of art, culture, and thought. **Ongoing** - Permanent exhibition of the finest collection of religious art in America, including works by Rubens, Botticelli, and Van Dyck. Offering visitors a 60-minute audio-guided tour of over 40 favored works for a modest fee. Hours: Tue.-Sun., 2-5pm. Contact: 864/242-5100, Ext. 1050 or at (www.bjumg.org).

New Location
Tiger Strikes Asteroid Greenville, 201 Smythe Street, Greenville. **Through June 14** - "Maybe Kudzu Covering My Body: Camouflage in the South," featuring works by borealis, Jacob Riddle, Katie Hargrave & Meredith Laura Lynn, Max Trumpower, Mo Costello, Nathaniel Hendrickson, Raymond Thompson, and Uté Petit. These nine artists explore camouflage as subject, action, visual reference, or by actively camouflaging. We find investigations of counter-surveillance, and in other examples, we find the opportunity that Abbot Thayer found himself preoccupied with the evidence of camouflaging within nature as a stimulus; evidenced in community led infrastructure that provides safety and support amongst and within marginalization, or through a fusing and musing between that which is the body and the stuff that isn't. Hours: Fri., 4-8pm; Sat., noon-6pm or by appt. Contact: e-mail to (greenville@tigerstrikesasteroid.com).

Upcountry History Museum, 540 Buncombe Street, Greenville. **Through Sept. 21** - "Dinosaurs: Land of Fire and Ice". Crossing the threshold of this special exhibition means traveling back in time to explore the Age of the Dinosaurs. As visitors move through the exhibit they encounter unfamiliar landscapes, touchable dinosaurs of all shapes and sizes, and opportunities to investigate clues about what the dinosaurs left behind. The exhibit builds on the popular fascination with dinosaurs and includes science, history, and literacy based activities to challenge all ages. "Dinosaurs: Land of Fire and Ice," designed for children ages 3-10, is the first child-centered exhibit dedicated to expanding the understanding of dinosaur habitat and range. The bilingual (Spanish and English) exhibit features three distinct sections that build on a child's innate curiosity about dinosaurs: Land of Fire (a warm dinosaur habitat), Land of Ice (a cold dinosaur habitat), and a Field Research Station (complete with a Big Dig experience). **June 7 - Jan. 18, 2026** - "Avengers: Endgame – The Exhibition". For over 85 years, creating independent yet deeply connected stories has been the foundation of the Marvel Universe. Conceived from a simple idea of strange tales and journeys in 1939 with the publication of Marvel Comics #1, Marvel began to create a world with visual and cultural impact that has continued to influence readers and viewers today. The first exhibition of its kind in the United States, the project invites visitors of all ages to traverse the Marvel Universe. This once-in-a-lifetime experience will explore the fourth installment in the Avengers saga and is the culmination of 22 interconnected Marvel films and the climax of a journey. The exhibit's design and messaging will emulate Avengers: Endgame's principles of friendship, teamwork, and setting aside differences to overcome impossible obstacles. **Ongoing** - Greenville County connects people, history, and culture. Through our collections, programs, and exhibitions the Museum preserves and interprets historical subjects pertaining to the Upcountry of South Carolina. Spanning two floors of permanent and changing exhibit galleries, the Museum tells the story of the Upcountry and features a year-round calendar of changing exhibits and program that dive deeper into history, art, science, and culture. Uncover the Upcountry's secrets. We invite you to step inside and discover the world and the Upcountry's role in it - as it was, as it is, and as it can be. Admission: Yes. Hours: Tue.-Sat., 10am-5pm & Sun., 1-5pm. Contact: 864/467-3100 or e-mail to (info@upcountryhistory.org).

ALTERNATE ART SPACES - Greenville
Centre Stage Theatre Gallery, 501 River Street, Greenville. **Through June 6** - Featuring works by Elizabeth Kinney. **Ongoing** - Featuring works by visual art members of MAC. Exhibits are offered in collaboration with the Metropolitan Arts Council. Hours: Tue.-Thur., 2-5pm & 2 hr. prior to shows. Contact: MAC at 864/467-3132, at (www.greenvillearts.com/mac-featured-galleries/).

Greenwood

Landscaped areas in Uptown Greenwood, June 1 - July 6, 2025 - "18th Anniversary Topiary Celebration," during the annual SC Festival of Flowers. When it comes to flowers, everyone loves the topiaries - from the majestic elephant to the dabbling ducks to the Safari Jeep. You will be astonished to see the variety of sculpture sizes, plants, colors and textures. In all, 57 unique "living" creations are uniquely set in landscaped areas in Uptown Greenwood. Each topiary has been adopted by an organization and is sponsored by a separate organization. Contact: (www.scfestivalofflowers.org).



View of the Greenwood Flower Festival

Throughout Downtown Greenwood, June 5 - 8, 2025 - "58th SC Festival of Flowers!," presented by Wesley Commons. We kick off the 58th SC Festival of Flowers with highly entertaining and fun-filled events for all ages during our main weekend. We invite you to stroll among our larger than life, "living" topiary sculptures spread throughout the Uptown Greenwood square. Then come browse and shop our arts and crafts show, take in various performances, experience our Wine Walk, join in our 5K run/walk, engage in Kidfest and tour exquisite home gardens. And that is just the beginning. See it all here and join us! Contact: (www.scfestivalofflowers.org).

Arts Center of Greenwood, at the Federal Building, 120 Main Street, Greenwood. **Main Gallery, June 6 - Aug. 2** - "SC Festival of Flowers Juried Art Show," juried by Michaela Pilar Brown. An awards reception will be held on June 7, from 3-5pm. The exhibition represents exemplary contemporary art from throughout the state. **Through June 7** - "SC Festival of Flowers Juried Youth Art Show". An awards reception will be held on June 5, from 5-6:30pm. The exhibition represents artwork by regional grade school students. **Ongoing** - Featuring works by local and regional artists. Hours: Mon.-Fri., 10am-5pm & Sat., 10am-3pm. Contact: 864/388-7800 or at (www.emeraldtriangle.us/arts-center).

Lander University Fine Art Gallery, Cultural Center Building, 320 Stanley Ave., Greenwood. **Ongoing** - The Lander University Fine Art Gallery features a variety of exhibits throughout the year. The gallery features national and regional artist, as well as student and faculty work showcasing painting, sculpture, ceramics, graphic design, and photography. Hours: Mon.-Fri., 10am-4pm. Contact: call Jon Holloway at 864/388-8810 or at (<https://www.facebook.com/pages/category/Art-Gallery/Lander-University-Fine-Art-Gallery-166498067092236/>).

ALTERNATE ART SPACES - Greenwood
Uptown Market, 220 Maxwell Avenue, Greenwood. **June 6, from noon-6pm & June 7, from 10am-6pm** - "SC Festival of Flowers Juried Arts & Crafts Show". Discover unique garden art, candles, jewelry, pottery, personalized gifts, handmade clothing, iron work, textile art, handbags and accessories, and so much more. Contact: (www.scfestivalofflowers.org).

Greer

Edward R. Driggers City of Greer Center for the Arts, 804 Trade St., Greer. **Ongoing** - Featuring artists studios. Hours: Hours: Tue., noon-8pm; Fri., 9am-3pm; & Sat., 10am-2pm. Contact: call Sara Odem at 864/5383 or at (<http://greerculturalarts.com/>).

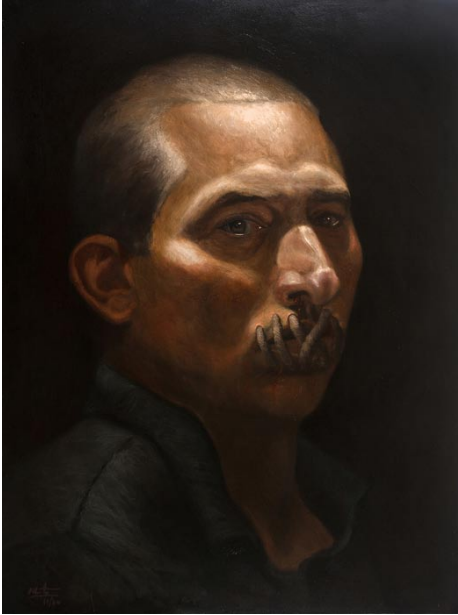
Hartsville

Black Creek Arts Center, 116 West College Ave., Hartsville. **Ongoing** - Featuring works by local and regional artists. Hours: Tue.-Thur., 10am-1pm and 2-5pm; Fri., 10am-2pm and 1st Sat. of the month 10am-1pm. Contact: 843/332-6234 or at (www.blackcreekarts.org).

Hartsville Museum and Sculpture Courtyard, 222 North Fifth Street, corner of Fifth Street and Home Avenue, Hartsville. **Ongoing** - Housed in a 1930's Post Office Building, the museum has kept many of the unique architectural features of the building. The skylight, original to the building, has been retrofitted with stained glass panels depicting the flora and fauna significant to the area. The Sculpture Courtyard added in 2000 features many different types of sculpture. The Showcase Gallery presents special exhibits focusing on history, the arts or present day events. Hours: Mon.-Fri., 10am-5pm (closed from noon-1pm on Fri.). Contact: 843/383-3005 or at (www.hartsvilmuseum.org).

The Patz Fowle Visual Arts Studio, SC Governor's School for Science + Mathematics, 401 Railroad Avenue, Hartsville. **Ongoing** - A public, boarding high school for students in grades 11 and 12. The school concentrates on science and mathematics, but offers the full spectrum of the humanities as well. For info visit (www.scgssm.org).

Hilton Head Island Area



Work by Barbasano Perez, 1st Prize in the HHAL's "2025 Biennale"

Art League of Hilton Head Gallery, at the Arts Center of Coastal Carolina, 14 Shelter Cove Lane, Hilton Head Island. **Through June 13** - "2025 Biennale, 29th National Juried Exhibition," with over \$5,000 in prizes will be awarded to the most outstanding works, selected by this year's "Biennale" Judge, Tony Armendariz, an award-winning artist living and painting in Illinois. Representing artists from across the country, including South Carolina, the 2025 Biennale promises to be a showcase of exemplary artwork. The national call for entries attracted over 1,000 artworks from 41 states. **June 17 - July 18** - "Joan Moreau McKeever: The Art of Discovery Continues". A reception will be held on June 18, from 5-7pm, and a washi tape demo is scheduled for June 20, at 1:30pm. Local artist, instructor, and lifelong creative Joan Moreau McKeever presents The Art of Discovery Continues at Art League Gallery this June. The exhibit is a celebration of exploration, featuring works in a variety of media—pastel, acrylic, mixed media, Japanese washi tape, cold wax and oil—reflecting McKeever's artistic philosophy: that curiosity is a gift and discovery is a lifelong journey. **Ongoing** - Featuring works by members of the Art League of Hilton Head. Hours: Mon.-Sat., 10am-4pm. Contact: 843/681-5060 or at (www.artleaguehhi.org).



Work by Paula Sharp & Ross Eatman

Coastal Discovery Museum, at Honey Horn, off Highway 278, across from Gumtree Road, Hilton Head Island. **Main Gallery, Through Aug. 17** - "Wild Bees," a photography exhibit by Paula Sharp and Ross Eatman. On view in the museum's main gallery, the exhibit features striking macro photography that offers a rare look at America's native bees and their vital role as pollinators. "Visitors of all ages will be captivated by the close-up images of native

bees—and inspired to learn more about these essential pollinators and why bee conservation matters," said Elizabeth Greenberg, Director of Exhibitions. Throughout the spring and summer, the museum will present several bee workshops and family-friendly programs. **Ongoing** - Featuring a butterfly sculpture by South Carolina artist Eric Moore; work by sculptor John Van Alstine; and murals by Italian artist Hitnes. Admission: FREE. Hours: Mon.-Sat., 9am-4:30pm & Sun., 11am-3pm. Contact: 843/689-6767 or at (www.coastaldiscovery.org).

Lake City

Acline Studios, 132 North Acline Street, Lake City. **Through July 19** - "Fake Flowers, in the Meantime," featuring works by Alexander Thierry. **Ongoing** - Featuring the working studios of: Ada Smolen-Morton, Ashley Hamilton, Colleen Critcher, Daniela Arenas, Douglas Gray, Elizabeth Borowsky, Jan Chenoweth, Kara Artman, Latoya Thompson, Malik Hayward, Morgan Elvington Walker, Princess Chandler, Roger Halligan, Sasha Federer, and Tiffany Thomas. Hours: Tue.-Sat., 11am-5pm. Contact: 843/374-0180.

Crossroads Gallery, 124 West Main Street, Lake City. **Ongoing** - Featuring past winning entries from ArtFields competitions on a rotating basis. Hours: Tue.-Sat., 11am-5pm. Contact: (www.artfieldssc.org).

Lancaster

The Springs House, Lancaster County Council of Arts, 201 West Gay Street, former City Hall, Lancaster. **June 2 - July 11** - "The Sewn Connection," features works by JUS10 Ellis, Joanna Henry, Toye Durrah, and Zaire McPhearson. A reception will be held on June 22, from 3-4:30pm. This is a powerful mixed media art exhibition that delves into the intricate relationships of four artists and their lived experiences, expressed through the fusion of fabric, sewing materials, and traditional art forms. Each artist brings their unique perspective and personal narrative to the show, using textiles not just as a medium but as a language to convey the threads that bind them to their cultural heritage, family histories, and the neighborhoods that shaped them. Hours: Mon.-Thur., 8am-5pm; Fri., 8am-3pm; or by appt. Contact: 803/285-7451 or at (www.lccarts.net).

USC Lancaster Native American Studies Center, 119 South Main Street, Lancaster. **Five Points Gallery & North Gallery, Through Aug. 30** - "Soul of the South." Curated by the Morris Center for Lowcountry Heritage, "Soul of the South" takes visitors on a musical journey highlighting the influences that Native Americans, enslaved Africans, and the European colonizers in the Lowcountry had on various genres of music: gospel, jazz, blues, musical theater and rock and roll. Largely sponsored by Gretsche, the renowned drum and musical instrument maker, the exhibit also showcases local musicians and groups whose notoriety reached beyond the Lowcountry. **Duke Energy Gallery, Through Aug. 5, 2026** - "Clay and Play!". After four years of planning and preparing, the Native American Studies Center is pleased to open its first-ever exhibit geared just for elementary-aged children. The exhibition is an educational children's exhibit designed with immersive play in mind, including colorful displays and wall murals, hands-on pottery replica displays, an interactive Three Sisters Garden where guests can "pick" corn, beans, and squash, and more. Center Special Projects Coordinator Elisabeth Avelar developed the exhibit, wanting to not only create a kid-friendly exhibit, but also to create an exhibit correlating to South Carolina's educational standards in history and covering the educational disciplines of STEAM (Science, Technology, Engineering, Art, and Mathematics) and literacy. **D. Lindsay Petrus Gallery, Ongoing** - "The Story of Catawba Pottery". This National Endowment for the Arts funded exhibit traces the art, culture and history of Catawba pottery, the oldest Native American pottery tradition in the United States. **Back Gallery, Semi-permanent Exhibit** - "This is Us: Native American Studies". This exhibit celebrates the history and 10th Anniversary of USCL's Native American Studies, including artifacts and artwork from Collections, and a history of the building our Native American Studies Center calls home. **Ongoing** - The Center is 15,000 square foot facility in historic downtown Lancaster. Guests will have the opportunity to tour the NAS Center's gallery spaces, archives, classrooms, and archaeology, language, and audio-visual labs. Home to the world's largest collection of Catawba Indian pottery, the NAS Center will offer exhibits of regional Native American Art, classes and programs focused on Native American history, culture, archaeology, folklore, and language. Hours: Hours: Tue., Wed., Fri., & Sat., 10am-5pm; Thur., 10am-7pm; by appt. Closed Mon.&Sun. To make an appointment for visitation, call the Native American Studies Center at 803/313-7172 or e-mail to (usclnasp@mailbox.sc.edu). Contact: 803/313-7172 or visit (<http://>

continued on Page 40