



SOUTH CAROLINA
CHAPTER

EMPOWERING
PROMOTING
SUPPORTING
ENCOURAGING

NATIONAL ASSOCIATION OF WOMEN ARTISTS South Carolina Chapter



The National Association of Women Artists (NAWA) fosters public awareness of, and interest in, visual art created by women in the United States.



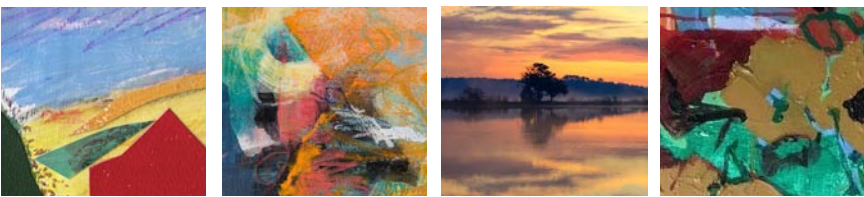
The SC Chapter of NAWA extends this mission into our region, promoting the visual arts through exhibitions of its members' works, professional development, and awards.



While encouraging contemporary and emerging artists, NAWASC honors and continues the long and important contributions of women artists to the history of American culture and art.



You must have a membership with NAWA to join the SC Chapter. Visit the nawa.org for information on national membership and nawasc.org for information on chapter membership.



If you are currently a NAWA member and desire more local connections, networking, and exhibition opportunities, please consider joining the SC Chapter. Scan the code for more information.

To join NAWA, visit thenawa.org, or scan the QR Code:
The deadline is September 15, 2022.



NAWA members represent all areas of the visual arts. Benefits of membership are many, including substantial awards, the opportunity to display artwork throughout the U.S. in our exhibitions, and inclusion in NAWA's Annual Catalog.

The SC Chapter of NAWA extends this mission into our region, promoting the visual arts through exhibitions of its members' works, professional development, and awards. The chapter includes nationally and internationally known award-winning artists. NAWASC has held exhibitions at prestigious places including The Vendue, Aiken Center for the Arts, and Coastal Discovery Museum. There are scheduled exhibitions for South Carolina museums.

Visit nawasc.org for information on the SC chapter or send specific questions regarding the SC Chapter to art.sc@gmail.com.

There is no additional application process to be a chapter member, once accepted into NAWA at the National level.